

**AFG Series 2018-1
Collateral Report**



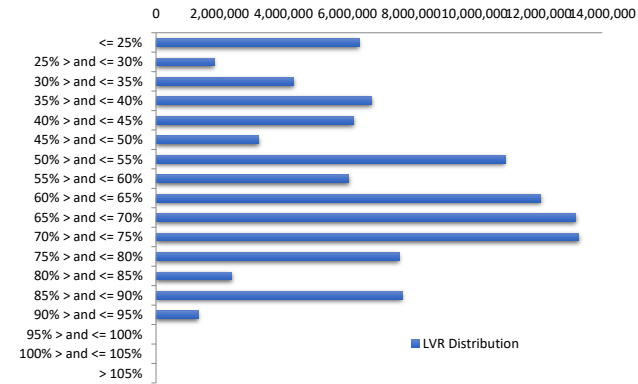
Model Period	45
Collection Period Start	1-Mar-22
Collection Period End	31-Mar-22
No. of Days	31
Interest Period Start	10-Mar-22
Interest Period End	10-Apr-22
No. of Days	32
Determination Date	6-Apr-22
Payment Date	11-Apr-22

Pool Statistics

Closing Balance of Mortgages	103,272,584
No. of Loans (Unconsolidated)	530
No. of Loans (Consolidated)	410
Average Loan Size (Unconsolidated)	194,854
Average Loan Size (Consolidated)	251,884
Largest Loan Size (Unconsolidated)	888,020
Largest Loan Size (Consolidated)	988,852
Smallest Loan Size (Unconsolidated)	(129,396)
Smallest Loan Size (Consolidated)	(129,396)
Weighted Average Interest Rate	3.29%
Weighted Average LVR	58.95%
Weighted Average Seasoning	77.13
Weighted Average Remaining Term	275.61

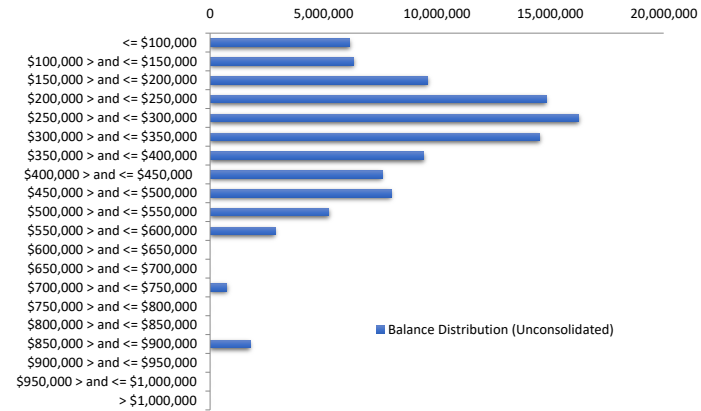
LVR Distribution

Current LTV	Balance	% Balance	Loan Count (Consol.)	% Loan Count
<= 25%	6,375,418	6.17%	102	24.88%
25% > and <= 30%	1,819,092	1.76%	13	3.17%
30% > and <= 35%	4,326,731	4.19%	21	5.12%
35% > and <= 40%	6,766,464	6.55%	27	6.59%
40% > and <= 45%	6,196,696	6.00%	25	6.10%
45% > and <= 50%	3,222,105	3.12%	14	3.41%
50% > and <= 55%	10,955,351	10.61%	30	7.32%
55% > and <= 60%	6,043,044	5.85%	21	5.12%
60% > and <= 65%	12,073,722	11.69%	33	8.05%
65% > and <= 70%	13,161,751	12.74%	36	8.78%
70% > and <= 75%	13,262,404	12.84%	37	9.02%
75% > and <= 80%	7,637,374	7.40%	20	4.88%
80% > and <= 85%	2,371,256	2.30%	7	1.71%
85% > and <= 90%	7,729,939	7.48%	21	5.12%
90% > and <= 95%	1,331,237	1.29%	3	0.73%
95% > and <= 100%	0	0.00%	0	0.00%
100% > and <= 105%	0	0.00%	0	0.00%
> 105%	0	0.00%	0	0.00%
Total	103,272,584	100.00%	410	100.00%



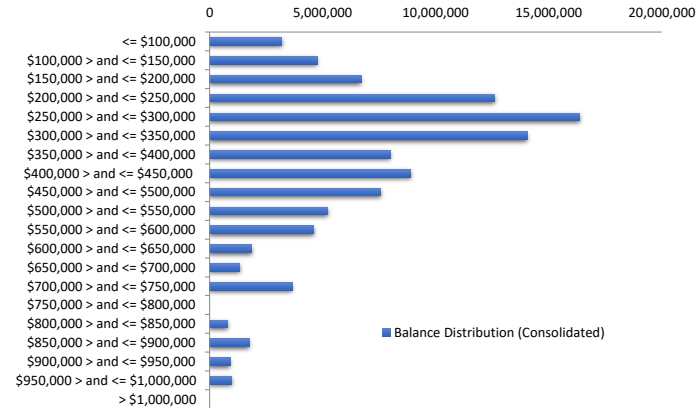
Balance Distribution (Unconsolidated)

Current Balance	Balance	% Balance	Loan Count	% Loan Count
<= \$100,000	6,152,104	5.96%	176	33.21%
\$100,000 > and <= \$150,000	6,336,848	6.14%	52	9.81%
\$150,000 > and <= \$200,000	9,585,643	9.28%	54	10.19%
\$200,000 > and <= \$250,000	14,828,957	14.36%	66	12.45%
\$250,000 > and <= \$300,000	16,245,274	15.73%	59	11.13%
\$300,000 > and <= \$350,000	14,536,717	14.08%	45	8.49%
\$350,000 > and <= \$400,000	9,418,731	9.12%	25	4.72%
\$400,000 > and <= \$450,000	7,584,000	7.34%	18	3.40%
\$450,000 > and <= \$500,000	7,980,927	7.73%	17	3.21%
\$500,000 > and <= \$550,000	5,232,170	5.07%	10	1.89%
\$550,000 > and <= \$600,000	2,864,710	2.77%	5	0.94%
\$600,000 > and <= \$650,000	0	0.00%	0	0.00%
\$650,000 > and <= \$700,000	0	0.00%	0	0.00%
\$700,000 > and <= \$750,000	743,515	0.72%	1	0.19%
\$750,000 > and <= \$800,000	0	0.00%	0	0.00%
\$800,000 > and <= \$850,000	0	0.00%	0	0.00%
\$850,000 > and <= \$900,000	1,762,988	1.71%	2	0.38%
\$900,000 > and <= \$950,000	0	0.00%	0	0.00%
\$950,000 > and <= \$1,000,000	0	0.00%	0	0.00%
> \$1,000,000	0	0.00%	0	0.00%
Total	103,272,584	100.00%	530	100.00%



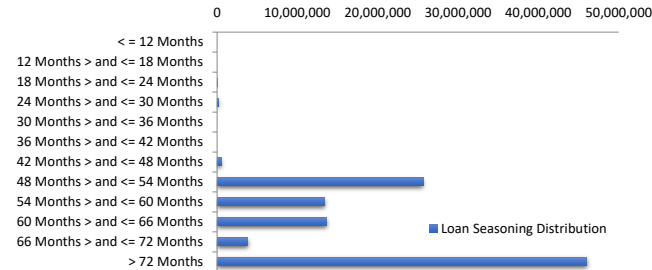
Balance Distribution (Consolidated)

Current Balance	Balance	% Balance	Loan Count (Consol.)	% Loan Count
<= \$100,000	3,189,654	3.09%	84	20.49%
\$100,000 > and <= \$150,000	4,766,760	4.62%	39	9.51%
\$150,000 > and <= \$200,000	6,700,236	6.49%	38	9.27%
\$200,000 > and <= \$250,000	12,615,360	12.22%	56	13.66%
\$250,000 > and <= \$300,000	16,373,565	15.85%	59	14.39%
\$300,000 > and <= \$350,000	14,049,270	13.60%	43	10.49%
\$350,000 > and <= \$400,000	7,978,676	7.73%	21	5.12%
\$400,000 > and <= \$450,000	8,891,074	8.61%	21	5.12%
\$450,000 > and <= \$500,000	7,557,377	7.32%	16	3.90%
\$500,000 > and <= \$550,000	5,224,374	5.06%	10	2.44%
\$550,000 > and <= \$600,000	4,608,366	4.46%	8	1.95%
\$600,000 > and <= \$650,000	1,870,938	1.81%	3	0.73%
\$650,000 > and <= \$700,000	1,325,337	1.28%	2	0.49%
\$700,000 > and <= \$750,000	3,657,217	3.54%	5	1.22%
\$750,000 > and <= \$800,000	0	0.00%	0	0.00%
\$800,000 > and <= \$850,000	804,658	0.78%	1	0.24%
\$850,000 > and <= \$900,000	1,762,988	1.71%	2	0.49%
\$900,000 > and <= \$950,000	907,881	0.88%	1	0.24%
\$950,000 > and <= \$1,000,000	988,852	0.96%	1	0.24%
> \$1,000,000	0	0.00%	0	0.00%
Total	103,272,584	100.00%	410	100.00%



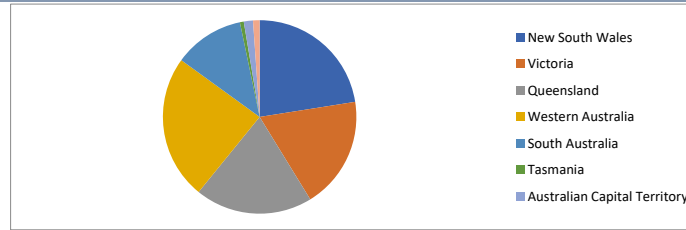
Loan Seasoning Distribution

Seasoning (Months)	Balance	% Balance	Loan Count	% Loan Count
<= 12 Months	0	0.00%	0	0.00%
12 Months > and <= 18 Months	0	0.00%	0	0.00%
18 Months > and <= 24 Months	39,590	0.04%	1	0.19%
24 Months > and <= 30 Months	200,490	0.19%	2	0.38%
30 Months > and <= 36 Months	0	0.00%	0	0.00%
36 Months > and <= 42 Months	0	0.00%	0	0.00%
42 Months > and <= 48 Months	524,267	0.51%	3	0.57%
48 Months > and <= 54 Months	25,663,730	24.85%	107	20.19%
54 Months > and <= 60 Months	13,387,744	12.96%	58	10.94%
60 Months > and <= 66 Months	13,609,645	13.18%	81	15.28%
66 Months > and <= 72 Months	3,789,739	3.67%	21	3.96%
> 72 Months	46,057,380	44.60%	257	48.49%
Total	103,272,584	100.00%	530	100.00%



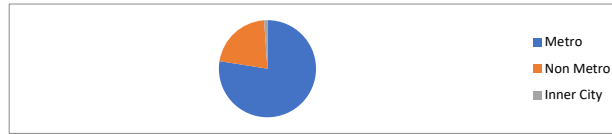
Geographic Distribution

Jurisdiction State	Balance	% Balance	Loan Count (Consol.)	% Loan Count
New South Wales	23,239,870	22.50%	86	20.98%
Victoria	19,343,990	18.73%	87	21.22%
Queensland	20,271,836	19.63%	76	18.54%
Western Australia	24,908,288	24.12%	89	21.71%
South Australia	12,123,851	11.74%	62	15.12%
Tasmania	665,913	0.64%	3	0.73%
Australian Capital Territory	1,588,654	1.54%	4	0.98%
Northern Territory	1,130,182	1.09%	3	0.73%
No Data	0	0.00%	0	0.00%
Total	103,272,584	100.00%	410	100.00%



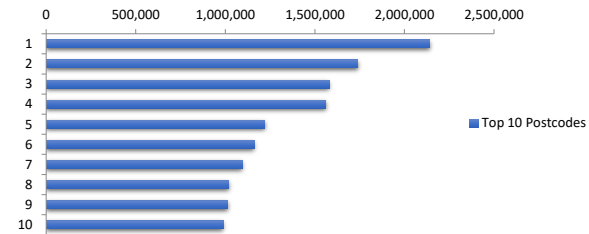
Locality

S&P Category	Balance	% Balance	Loan Count (Consol.)	% Loan Count
Metro	80,038,765	77.50%	325	79.27%
Non Metro	22,081,969	21.38%	80	19.51%
Inner City	1,151,850	1.12%	5	1.22%
No Data	0	0.00%	0	0.00%
Total	103,272,584	100.00%	410	100.00%



Top 10 Postcodes

Postcode	Balance	% Balance	Loan Count (Consol.)	% Loan Count
6038	2,138,963	2.07%	5	0.94%
6069	1,738,078	1.68%	5	0.94%
2261	1,580,263	1.53%	4	0.75%
6030	1,560,805	1.51%	3	0.57%
6060	1,219,612	1.18%	6	1.13%
6164	1,162,112	1.13%	4	0.75%
2148	1,095,070	1.06%	2	0.38%
4160	1,018,941	0.99%	2	0.38%
2190	1,011,658	0.98%	2	0.38%
2756	987,373	0.96%	2	0.38%
Total	13,512,875	13.08%	35	6.60%



Documentation

Document Type	Balance	% Balance	Loan Count	% Loan Count
Full Doc	103,272,584	100.00%	530	100.00%
Low Doc	0	0.00%	0	0.00%
No Doc	0	0.00%	0	0.00%
Total	103,272,584	100.00%	530	100.00%



Rate Type

Rate Type	Balance	% Balance	Loan Count	% Loan Count
Variable Rate	103,272,584	100.00%	530	100.00%
Fixed Rate	0	0.00%	0	0.00%
Total	103,272,584	100.00%	530	100.00%



Repayment Type

Repayment Type	Balance	% Balance	Loan Count	% Loan Count
Principal & Interest	92,798,048	89.86%	480	90.57%
Interest Only	10,422,024	10.09%	43	8.11%
Non-Billing	52,512	0.05%	5	0.94%
No Data	0	0.00%	2	0.38%
Total	103,272,584	100.00%	530	100.00%



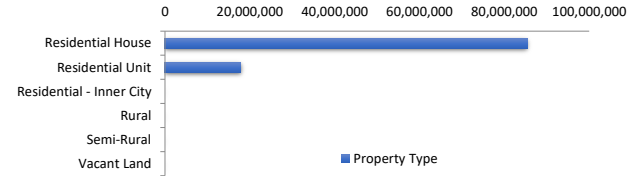
Loan Type

Product Category	Balance	% Balance	Loan Count	% Loan Count
Line of Credit	52,512	0.05%	5	0.94%
Term Loan	103,220,072	99.95%	525	99.06%
Total	103,272,584	100.00%	530	100.00%



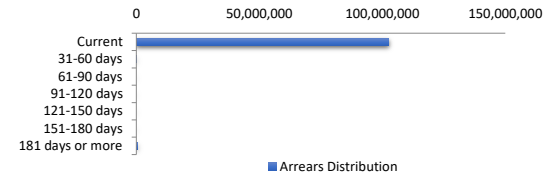
Property Type

Property Type	Balance	% Balance	Loan Count (Consol.)	% Loan Count
Residential House	85,378,457	82.67%	329	80.24%
Residential Unit	17,894,127	17.33%	81	19.76%
Residential - Inner City	0	0.00%	0	0.00%
Rural	0	0.00%	0	0.00%
Semi-Rural	0	0.00%	0	0.00%
Vacant Land	0	0.00%	0	0.00%
No Data	0	0.00%	0	0.00%
Total	103,272,584	100.00%	410	100.00%



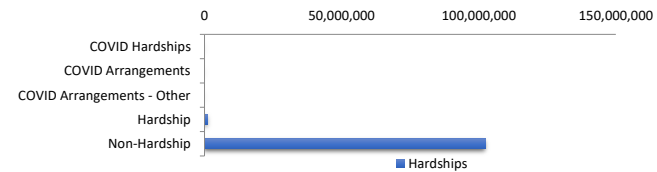
Arrears Distribution

Arrears Band	Balance	% Balance	Loan Count	% Loan Count
Current	102,533,135	99.28%	528	99.62%
31-60 days	250,281	0.24%	1	0.19%
61-90 days	0	0.00%	0	0.00%
91-120 days	0	0.00%	0	0.00%
121-150 days	0	0.00%	0	0.00%
151-180 days	0	0.00%	0	0.00%
181 days or more	489,168	0.47%	1	0.19%
Total	103,272,584	100.00%	530	100.00%



Hardships

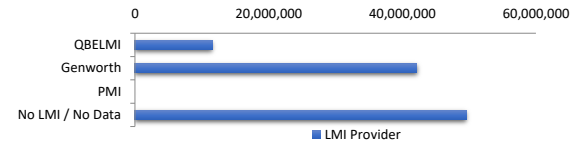
Hardships	Balance	% Balance	Loan Count (Consol.)	% Loan Count
COVID Hardships	0	0.00%	0	0.00%
COVID Arrangements	0	0.00%	0	0.00%
COVID Arrangements - Other	0	0.00%	0	0.00%
Hardship	953,709	0.92%	3	0.73%
Non-Hardship	102,318,875	99.08%	407	99.27%
Total	103,272,584	100.00%	410	100.00%



COVID Hardship – A deferral of loan repayments for a period from 3 to 6 months as a result of financial stresses due to Covid-19
 COVID Arrangement - A temporary change to the loan repayment type from 'Principal & Interest' to 'Interest Only' as a result of financial stresses

LMI Provider

LMI Provider	Balance	% Balance	Loan Count (Consol.)	% Loan Count
QBELMI	11,536,539	11.17%	44	10.73%
Genworth	42,159,945	40.82%	195	47.56%
PMI	0	0.00%	0	0.00%
No LMI / No Data	49,576,101	48.01%	171	41.71%
Total	103,272,584	100.00%	410	100.00%



Property Occupancy

Property Occupancy	Balance	% Balance	Loan Count	% Loan Count
Investment	40,762,455	39.47%	188	35.47%
Owner Occupier	62,510,129	60.53%	342	64.53%
Total	103,272,584	100.00%	530	100.00%



Default Statistics

Default Data	Amount	No. of Loans
Defaulted Loans	489,167.64	1
Loss on Sale	0.00	0
Claims on LMI	0.00	0
Claims paid by LMI	0.00	0
Claims Denied/Reduced	0.00	0
Loss covered by Excess Spread	0.00	0