

AFG Series 2017-1
Collateral Report



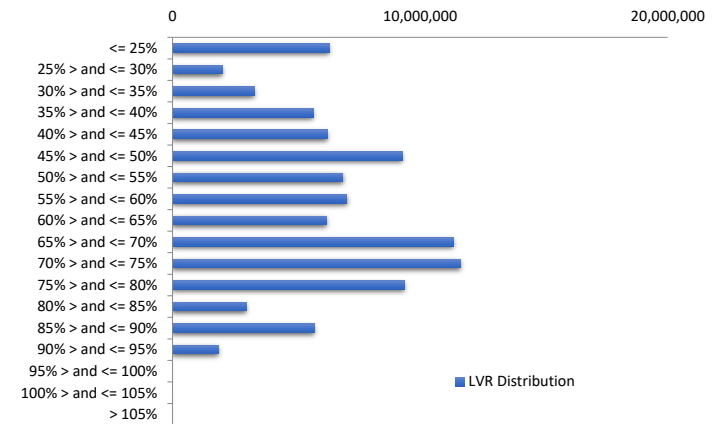
Model Period	53
Collection Period Start	1-Jan-22
Collection Period End	31-Jan-22
No. of Days	31
Interest Period Start	10-Jan-22
Interest Period End	9-Feb-22
No. of Days	31
Determination Date	7-Feb-22
Payment Date	10-Feb-22

Pool Statistics

Closing Balance of Mortgages	95,907,127
No. of Loans (Unconsolidated)	504
No. of Loans (Consolidated)	387
Average Loan Size (Unconsolidated)	190,292
Average Loan Size (Consolidated)	247,822
Largest Loan Size (Unconsolidated)	905,522
Largest Loan Size (Consolidated)	1,412,391
Smallest Loan Size (Unconsolidated)	(98,051)
Smallest Loan Size (Consolidated)	(98,051)
Weighted Average Interest Rate	3.21%
Weighted Average LVR	58.49%
Weighted Average Seasoning	74.12
Weighted Average Remaining Term	280.33

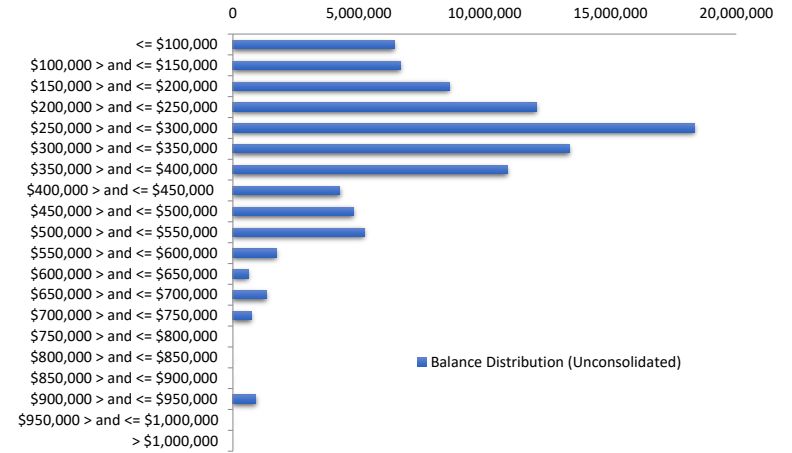
LVR Distribution

Current LTV	Balance	% Balance	Loan Count (Consol.)	% Loan Count
<= 25%	6,340,027	6.61%	98	25.32%
25% > and <= 30%	2,029,447	2.12%	16	4.13%
30% > and <= 35%	3,309,415	3.45%	17	4.39%
35% > and <= 40%	5,680,676	5.92%	23	5.94%
40% > and <= 45%	6,257,693	6.52%	21	5.43%
45% > and <= 50%	9,277,746	9.67%	25	6.46%
50% > and <= 55%	6,882,505	7.18%	23	5.94%
55% > and <= 60%	7,041,705	7.34%	24	6.20%
60% > and <= 65%	6,222,655	6.49%	19	4.91%
65% > and <= 70%	11,340,418	11.82%	34	8.79%
70% > and <= 75%	11,622,061	12.12%	33	8.53%
75% > and <= 80%	9,349,172	9.75%	23	5.94%
80% > and <= 85%	2,970,646	3.10%	9	2.33%
85% > and <= 90%	5,722,665	5.97%	18	4.65%
90% > and <= 95%	1,860,296	1.94%	4	1.03%
95% > and <= 100%	0	0.00%	0	0.00%
100% > and <= 105%	0	0.00%	0	0.00%
> 105%	0	0.00%	0	0.00%
Total	95,907,127	100.00%	387	100.00%



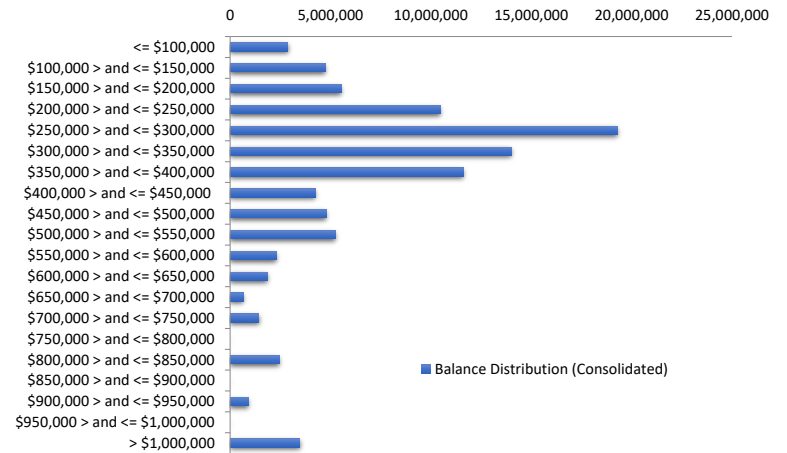
Balance Distribution (Unconsolidated)

Current Balance	Balance	% Balance	Loan Count	% Loan Count
<= \$100,000	6,428,043	6.70%	173	34.33%
\$100,000 > and <= \$150,000	6,659,724	6.94%	53	10.52%
\$150,000 > and <= \$200,000	8,606,018	8.97%	50	9.92%
\$200,000 > and <= \$250,000	12,058,216	12.57%	53	10.52%
\$250,000 > and <= \$300,000	18,340,151	19.12%	67	13.29%
\$300,000 > and <= \$350,000	13,366,116	13.94%	41	8.13%
\$350,000 > and <= \$400,000	10,896,498	11.36%	29	5.75%
\$400,000 > and <= \$450,000	4,252,284	4.43%	10	1.98%
\$450,000 > and <= \$500,000	4,795,414	5.00%	10	1.98%
\$500,000 > and <= \$550,000	5,209,384	5.43%	10	1.98%
\$550,000 > and <= \$600,000	1,718,152	1.79%	3	0.60%
\$600,000 > and <= \$650,000	607,063	0.63%	1	0.20%
\$650,000 > and <= \$700,000	1,344,624	1.40%	2	0.40%
\$700,000 > and <= \$750,000	719,919	0.75%	1	0.20%
\$750,000 > and <= \$800,000	0	0.00%	0	0.00%
\$800,000 > and <= \$850,000	0	0.00%	0	0.00%
\$850,000 > and <= \$900,000	0	0.00%	0	0.00%
\$900,000 > and <= \$950,000	905,522	0.94%	1	0.20%
\$950,000 > and <= \$1,000,000	0	0.00%	0	0.00%
> \$1,000,000	0	0.00%	0	0.00%
Total	95,907,127	100.00%	504	100.00%



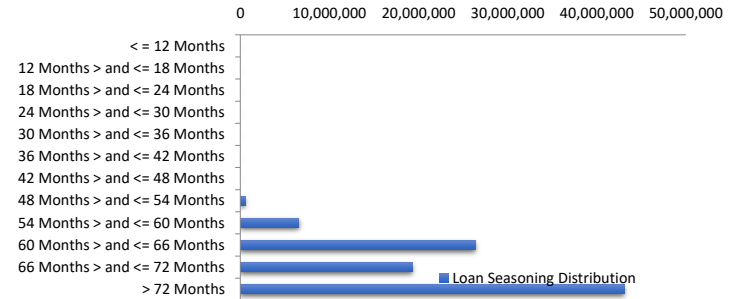
Balance Distribution (Consolidated)

Current Balance	Balance	% Balance	Loan Count (Consol.)	% Loan Count
<= \$100,000	2,880,733	3.00%	80	20.67%
\$100,000 > and <= \$150,000	4,744,977	4.95%	38	9.82%
\$150,000 > and <= \$200,000	5,554,358	5.79%	32	8.27%
\$200,000 > and <= \$250,000	10,472,181	10.92%	46	11.89%
\$250,000 > and <= \$300,000	19,294,573	20.12%	70	18.09%
\$300,000 > and <= \$350,000	13,999,248	14.60%	43	11.11%
\$350,000 > and <= \$400,000	11,611,389	12.11%	31	8.01%
\$400,000 > and <= \$450,000	4,233,512	4.41%	10	2.58%
\$450,000 > and <= \$500,000	4,788,042	4.99%	10	2.58%
\$500,000 > and <= \$550,000	5,231,385	5.45%	10	2.58%
\$550,000 > and <= \$600,000	2,295,183	2.39%	4	1.03%
\$600,000 > and <= \$650,000	1,866,008	1.95%	3	0.78%
\$650,000 > and <= \$700,000	674,462	0.70%	1	0.26%
\$700,000 > and <= \$750,000	1,434,729	1.50%	2	0.52%
\$750,000 > and <= \$800,000	0	0.00%	0	0.00%
\$800,000 > and <= \$850,000	2,449,489	2.55%	3	0.78%
\$850,000 > and <= \$900,000	0	0.00%	0	0.00%
\$900,000 > and <= \$950,000	905,522	0.94%	1	0.26%
\$950,000 > and <= \$1,000,000	0	0.00%	0	0.00%
> \$1,000,000	3,471,336	3.62%	3	0.78%
Total	95,907,127	100.00%	387	100.00%



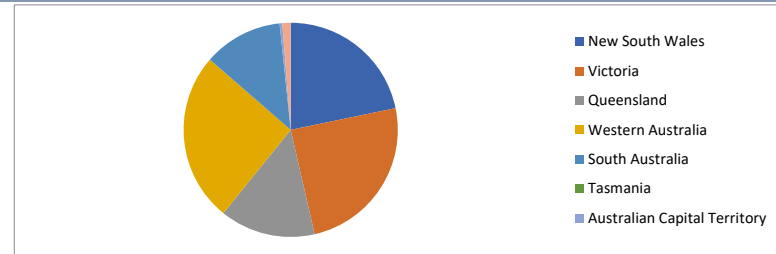
Loan Seasoning Distribution

Seasoning (Months)	Balance	% Balance	Loan Count	% Loan Count
<= 12 Months	0	0.00%	0	0.00%
12 Months > and <= 18 Months	0	0.00%	0	0.00%
18 Months > and <= 24 Months	0	0.00%	0	0.00%
24 Months > and <= 30 Months	0	0.00%	0	0.00%
30 Months > and <= 36 Months	0	0.00%	0	0.00%
36 Months > and <= 42 Months	0	0.00%	0	0.00%
42 Months > and <= 48 Months	0	0.00%	0	0.00%
48 Months > and <= 54 Months	531,301	0.55%	1	0.20%
54 Months > and <= 60 Months	6,559,504	6.84%	35	6.94%
60 Months > and <= 66 Months	26,407,870	27.53%	108	21.43%
66 Months > and <= 72 Months	19,305,502	20.13%	103	20.44%
> 72 Months	43,102,951	44.94%	257	50.99%
Total	95,907,127	100.00%	504	100.00%



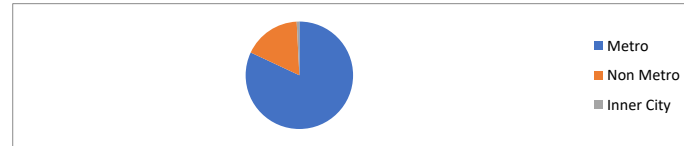
Geographic Distribution

Jurisdiction State	Balance	% Balance	Loan Count (Consol.)	% Loan Count
New South Wales	20,858,685	21.75%	82	21.19%
Victoria	23,647,103	24.66%	86	22.22%
Queensland	13,819,319	14.41%	57	14.73%
Western Australia	24,529,897	25.58%	98	25.32%
South Australia	11,457,407	11.95%	58	14.99%
Tasmania	0	0.00%	1	0.26%
Australian Capital Territory	393,466	0.41%	2	0.52%
Northern Territory	1,201,250	1.25%	3	0.78%
No Data	0	0.00%	0	0.00%
Total	95,907,127	100.00%	387	100.00%



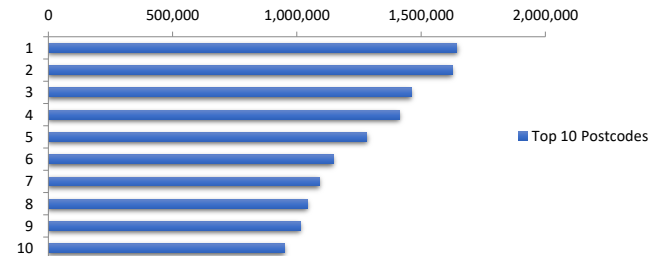
Locality

S&P Category	Balance	% Balance	Loan Count (Consol.)	% Loan Count
Metro	78,608,056	81.96%	305	78.81%
Non Metro	16,532,756	17.24%	80	20.67%
Inner City	766,315	0.80%	2	0.52%
No Data	0	0.00%	0	0.00%
Total	95,907,127	100.00%	387	100.00%



Top 10 Postcodes

Postcode	Balance	% Balance	Loan Count (Consol.)	% Loan Count
6170	1,644,183	1.71%	4	0.79%
5095	1,624,690	1.69%	5	0.99%
6065	1,462,473	1.52%	4	0.79%
3029	1,412,391	1.47%	1	0.20%
6055	1,281,782	1.34%	3	0.60%
2570	1,148,079	1.20%	2	0.40%
6164	1,090,367	1.14%	4	0.79%
5083	1,043,910	1.09%	2	0.40%
4300	1,014,425	1.06%	3	0.60%
6060	949,071	0.99%	5	0.99%
Total	12,671,371	13.21%	33	6.55%



Documentation

Document Type	Balance	% Balance	Loan Count	% Loan Count
Full Doc	95,907,127	100.00%	504	100.00%
Low Doc	0	0.00%	0	0.00%
No Doc	0	0.00%	0	0.00%
Total	95,907,127	100.00%	504	100.00%



Rate Type

Rate Type	Balance	% Balance	Loan Count	% Loan Count
Variable Rate	95,907,127	100.00%	504	100.00%
Fixed Rate	0	0.00%	0	0.00%
Total	95,907,127	100.00%	504	100.00%



Repayment Type

Repayment Type	Balance	% Balance	Loan Count	% Loan Count
Principal & Interest	90,202,108	94.05%	487	96.63%
Interest Only	5,705,019	5.95%	17	3.37%
Non-Billing	0	0.00%	0	0.00%
Total	95,907,127	100.00%	504	100.00%



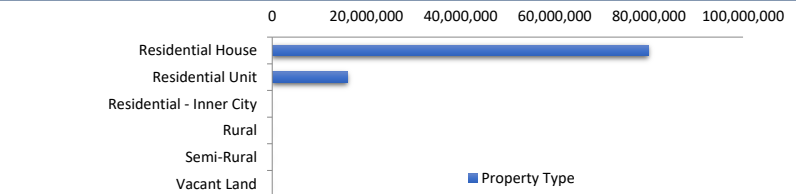
Loan Type

Product Category	Balance	% Balance	Loan Count	% Loan Count
Line of Credit	0	0.00%	0	0.00%
Term Loan	95,907,127	100.00%	504	100.00%
Total	95,907,127	100.00%	504	100.00%



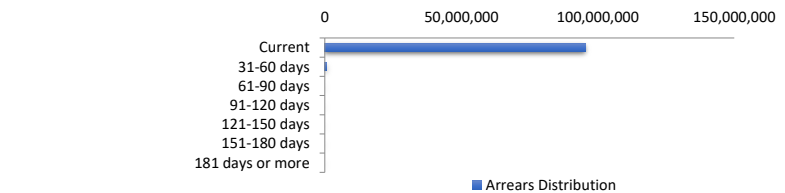
Property Type

Property Type	Balance	% Balance	Loan Count (Consol.)	% Loan Count
Residential House	79,925,274	83.34%	309	79.84%
Residential Unit	15,981,853	16.66%	78	20.16%
Residential - Inner City	0	0.00%	0	0.00%
Rural	0	0.00%	0	0.00%
Semi-Rural	0	0.00%	0	0.00%
Vacant Land	0	0.00%	0	0.00%
No Data	0	0.00%	0	0.00%
Total	95,907,127	100.00%	387	100.00%



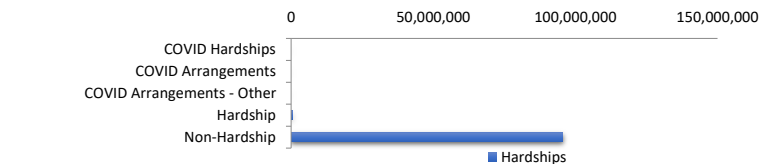
Arrears Distribution

Arrears Band	Balance	% Balance	Loan Count	% Loan Count
Current	95,350,390	99.42%	502	99.60%
31-60 days	556,737	0.58%	2	0.40%
61-90 days	0	0.00%	0	0.00%
91-120 days	0	0.00%	0	0.00%
121-150 days	0	0.00%	0	0.00%
151-180 days	0	0.00%	0	0.00%
181 days or more	0	0.00%	0	0.00%
Total	95,907,127	100.00%	504	100.00%



Hardships

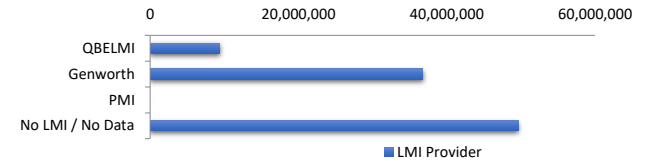
Hardships	Balance	% Balance	Loan Count (Consol.)	% Loan Count
COVID Hardships	0	0.00%	0	0.00%
COVID Arrangements	0	0.00%	0	0.00%
COVID Arrangements - Other	0	0.00%	0	0.00%
Hardship	318,744	0.33%	1	0.26%
Non-Hardship	95,588,383	99.67%	386	99.74%
Total	95,907,127	100.00%	387	100.00%



COVID Hardship – A deferral of loan repayments for a period from 3 to 6 months as a result of financial stresses due to Covid-19
 COVID Arrangement - A temporary change to the loan repayment type from 'Principal & Interest' to 'Interest Only' as a result of financial stresses due to Covid-19

LMI Provider

LMI Provider	Balance	% Balance	Loan Count (Consol.)	% Loan Count
QBELMI	9,404,615	9.81%	35	9.04%
Genworth	36,792,719	38.36%	155	40.05%
PMI	0	0.00%	0	0.00%
No LMI / No Data	49,709,793	51.83%	197	50.90%
Total	95,907,127	100.00%	387	100.00%



Property Occupancy

Property Occupancy	Balance	% Balance	Loan Count	% Loan Count
Investment	40,114,861	41.83%	175	34.72%
Owner Occupier	55,792,266	58.17%	329	65.28%
Total	95,907,127	100.00%	504	100.00%



Default Statistics

Default Data	Amount	No. of Loans
Defaulted Loans	0.00	0
Loss on Sale	0.00	0
Claims on LMI	0.00	0
Claims paid by LMI	0.00	0
Claims Denied/Reduced	0.00	0
Loss covered by Excess Spread	0.00	N/A