

AFG Series 2017-1
Collateral Report



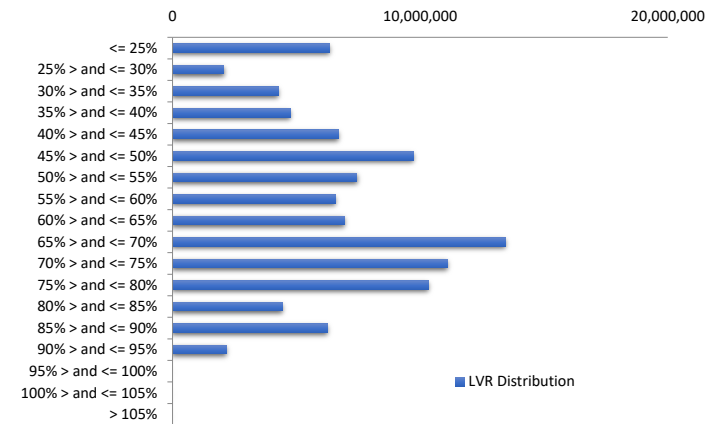
Model Period	51
Collection Period Start	1-Nov-21
Collection Period End	30-Nov-21
No. of Days	30
Interest Period Start	10-Nov-21
Interest Period End	9-Dec-21
No. of Days	30
Determination Date	7-Dec-21
Payment Date	10-Dec-21

Pool Statistics

Closing Balance of Mortgages	102,613,061
No. of Loans (Unconsolidated)	553
No. of Loans (Consolidated)	412
Average Loan Size (Unconsolidated)	185,557
Average Loan Size (Consolidated)	249,061
Largest Loan Size (Unconsolidated)	909,741
Largest Loan Size (Consolidated)	1,419,582
Smallest Loan Size (Unconsolidated)	(97,077)
Smallest Loan Size (Consolidated)	(97,077)
Weighted Average Interest Rate	3.23%
Weighted Average LVR	59.15%
Weighted Average Seasoning	72.08
Weighted Average Remaining Term	282.47

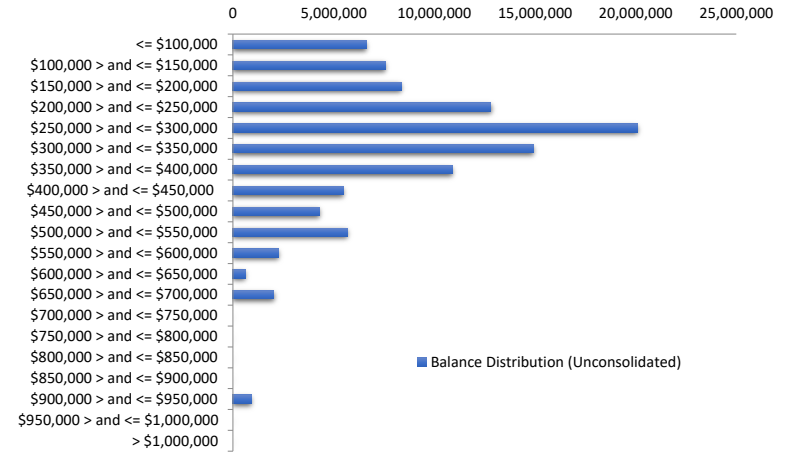
LVR Distribution

Current LTV	Balance	% Balance	Loan Count (Consol.)	% Loan Count
<= 25%	6,338,260	6.18%	99	24.03%
25% > and <= 30%	2,077,466	2.02%	16	3.88%
30% > and <= 35%	4,274,271	4.17%	22	5.34%
35% > and <= 40%	4,753,303	4.63%	20	4.85%
40% > and <= 45%	6,712,381	6.54%	23	5.58%
45% > and <= 50%	9,724,402	9.48%	28	6.80%
50% > and <= 55%	7,448,630	7.26%	23	5.58%
55% > and <= 60%	6,592,737	6.42%	23	5.58%
60% > and <= 65%	6,946,475	6.77%	22	5.34%
65% > and <= 70%	13,445,053	13.10%	39	9.47%
70% > and <= 75%	11,092,107	10.81%	32	7.77%
75% > and <= 80%	10,342,733	10.08%	27	6.55%
80% > and <= 85%	4,446,083	4.33%	14	3.40%
85% > and <= 90%	6,245,199	6.09%	19	4.61%
90% > and <= 95%	2,173,961	2.12%	5	1.21%
95% > and <= 100%	0	0.00%	0	0.00%
100% > and <= 105%	0	0.00%	0	0.00%
> 105%	0	0.00%	0	0.00%
Total	102,613,061	100.00%	412	100.00%



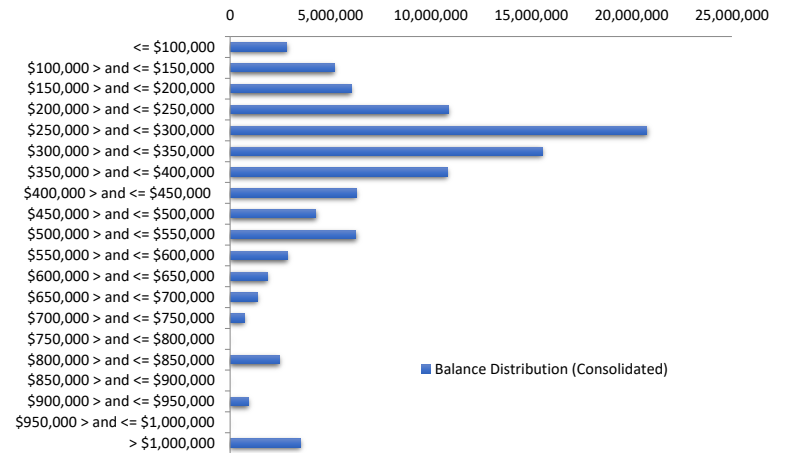
Balance Distribution (Unconsolidated)

Current Balance	Balance	% Balance	Loan Count	% Loan Count
<= \$100,000	6,620,696	6.45%	195	35.26%
\$100,000 > and <= \$150,000	7,575,944	7.38%	61	11.03%
\$150,000 > and <= \$200,000	8,363,968	8.15%	49	8.86%
\$200,000 > and <= \$250,000	12,814,175	12.49%	57	10.31%
\$250,000 > and <= \$300,000	20,096,601	19.58%	74	13.38%
\$300,000 > and <= \$350,000	14,944,352	14.56%	46	8.32%
\$350,000 > and <= \$400,000	10,902,941	10.63%	29	5.24%
\$400,000 > and <= \$450,000	5,483,760	5.34%	13	2.35%
\$450,000 > and <= \$500,000	4,293,253	4.18%	9	1.63%
\$500,000 > and <= \$550,000	5,688,383	5.54%	11	1.99%
\$550,000 > and <= \$600,000	2,274,016	2.22%	4	0.72%
\$600,000 > and <= \$650,000	606,997	0.59%	1	0.18%
\$650,000 > and <= \$700,000	2,038,234	1.99%	3	0.54%
\$700,000 > and <= \$750,000	0	0.00%	0	0.00%
\$750,000 > and <= \$800,000	0	0.00%	0	0.00%
\$800,000 > and <= \$850,000	0	0.00%	0	0.00%
\$850,000 > and <= \$900,000	0	0.00%	0	0.00%
\$900,000 > and <= \$950,000	909,741	0.89%	1	0.18%
\$950,000 > and <= \$1,000,000	0	0.00%	0	0.00%
> \$1,000,000	0	0.00%	0	0.00%
Total	102,613,061	100.00%	553	100.00%



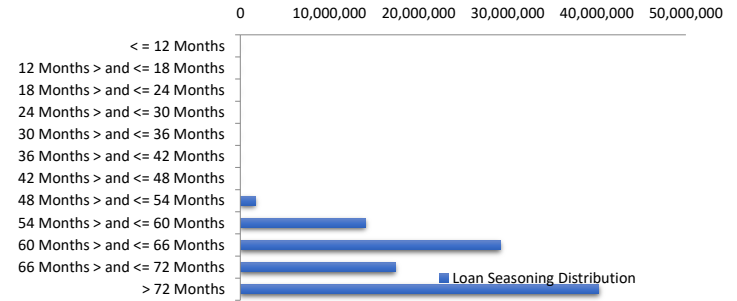
Balance Distribution (Consolidated)

Current Balance	Balance	% Balance	Loan Count (Consol.)	% Loan Count
<= \$100,000	2,828,721	2.76%	80	19.42%
\$100,000 > and <= \$150,000	5,196,968	5.06%	42	10.19%
\$150,000 > and <= \$200,000	6,048,443	5.89%	35	8.50%
\$200,000 > and <= \$250,000	10,876,781	10.60%	48	11.65%
\$250,000 > and <= \$300,000	20,763,276	20.23%	76	18.45%
\$300,000 > and <= \$350,000	15,564,295	15.17%	48	11.65%
\$350,000 > and <= \$400,000	10,839,140	10.56%	29	7.04%
\$400,000 > and <= \$450,000	6,309,037	6.15%	15	3.64%
\$450,000 > and <= \$500,000	4,271,692	4.16%	9	2.18%
\$500,000 > and <= \$550,000	6,269,992	6.11%	12	2.91%
\$550,000 > and <= \$600,000	2,855,318	2.78%	5	1.21%
\$600,000 > and <= \$650,000	1,873,576	1.83%	3	0.73%
\$650,000 > and <= \$700,000	1,352,699	1.32%	2	0.49%
\$700,000 > and <= \$750,000	716,513	0.70%	1	0.24%
\$750,000 > and <= \$800,000	0	0.00%	0	0.00%
\$800,000 > and <= \$850,000	2,441,889	2.38%	3	0.73%
\$850,000 > and <= \$900,000	0	0.00%	0	0.00%
\$900,000 > and <= \$950,000	909,741	0.89%	1	0.24%
\$950,000 > and <= \$1,000,000	0	0.00%	0	0.00%
> \$1,000,000	3,494,980	3.41%	3	0.73%
Total	102,613,061	100.00%	412	100.00%



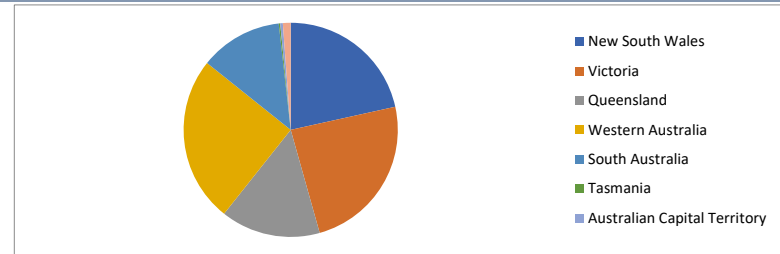
Loan Seasoning Distribution

Seasoning (Months)	Balance	% Balance	Loan Count	% Loan Count
<= 12 Months	0	0.00%	0	0.00%
12 Months > and <= 18 Months	0	0.00%	0	0.00%
18 Months > and <= 24 Months	0	0.00%	0	0.00%
24 Months > and <= 30 Months	0	0.00%	1	0.18%
30 Months > and <= 36 Months	0	0.00%	0	0.00%
36 Months > and <= 42 Months	0	0.00%	0	0.00%
42 Months > and <= 48 Months	0	0.00%	0	0.00%
48 Months > and <= 54 Months	1,695,779	1.65%	6	1.08%
54 Months > and <= 60 Months	14,061,301	13.70%	73	13.20%
60 Months > and <= 66 Months	29,208,405	28.46%	130	23.51%
66 Months > and <= 72 Months	17,416,755	16.97%	93	16.82%
> 72 Months	40,230,821	39.21%	250	45.21%
Total	102,613,061	100.00%	553	100.00%



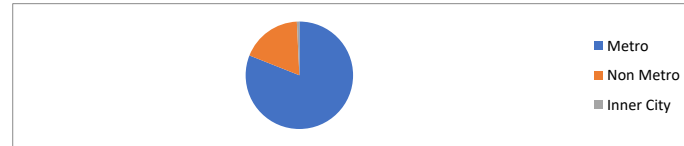
Geographic Distribution

Jurisdiction State	Balance	% Balance	Loan Count (Consol.)	% Loan Count
New South Wales	22,101,274	21.54%	86	20.87%
Victoria	24,725,099	24.10%	90	21.84%
Queensland	15,441,588	15.05%	64	15.53%
Western Australia	25,705,491	25.05%	102	24.76%
South Australia	12,804,706	12.48%	63	15.29%
Tasmania	226,185	0.22%	2	0.49%
Australian Capital Territory	403,175	0.39%	2	0.49%
Northern Territory	1,205,544	1.17%	3	0.73%
No Data	0	0.00%	0	0.00%
Total	102,613,061	100.00%	412	100.00%



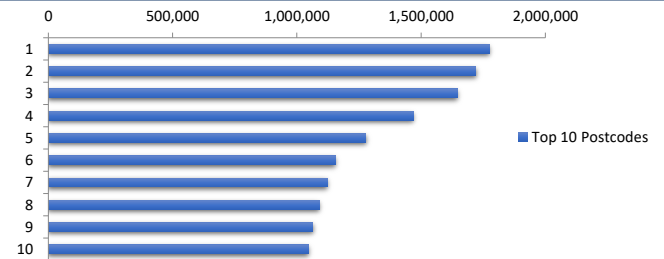
Locality

S&P Category	Balance	% Balance	Loan Count (Consol.)	% Loan Count
Metro	83,131,833	81.01%	321	77.91%
Non Metro	18,711,104	18.23%	89	21.60%
Inner City	770,124	0.75%	2	0.49%
No Data	0	0.00%	0	0.00%
Total	102,613,061	100.00%	412	100.00%



Top 10 Postcodes

Postcode	Balance	% Balance	Loan Count (Consol.)	% Loan Count
5095	1,774,384	1.73%	5	0.90%
3029	1,719,999	1.68%	2	0.36%
6170	1,645,818	1.60%	4	0.72%
6065	1,467,660	1.43%	4	0.72%
6055	1,277,953	1.25%	3	0.54%
2570	1,153,690	1.12%	2	0.36%
4209	1,122,258	1.09%	3	0.54%
6164	1,091,246	1.06%	4	0.72%
4030	1,064,003	1.04%	4	0.72%
5083	1,048,237	1.02%	2	0.36%
Total	13,365,247	13.02%	33	5.97%



Documentation

Document Type	Balance	% Balance	Loan Count	% Loan Count
Full Doc	102,613,061	100.00%	553	100.00%
Low Doc	0	0.00%	0	0.00%
No Doc	0	0.00%	0	0.00%
Total	102,613,061	100.00%	553	100.00%



Rate Type

Rate Type	Balance	% Balance	Loan Count	% Loan Count
Variable Rate	102,613,061	100.00%	553	100.00%
Fixed Rate	0	0.00%	0	0.00%
Total	102,613,061	100.00%	553	100.00%



Repayment Type

Repayment Type	Balance	% Balance	Loan Count	% Loan Count
Principal & Interest	94,154,333	91.76%	525	94.94%
Interest Only	8,458,728	8.24%	28	5.06%
Non-Billing	0	0.00%	0	0.00%
Total	102,613,061	100.00%	553	100.00%



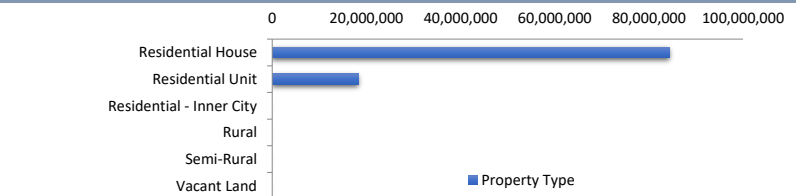
Loan Type

Product Category	Balance	% Balance	Loan Count	% Loan Count
Line of Credit	0	0.00%	0	0.00%
Term Loan	102,613,061	100.00%	553	100.00%
Total	102,613,061	100.00%	553	100.00%



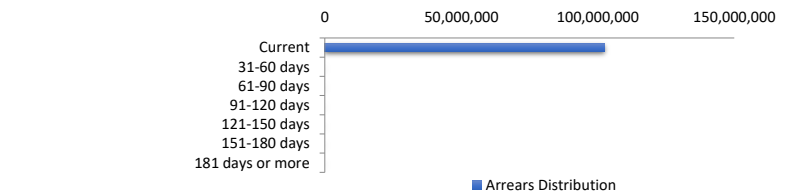
Property Type

Property Type	Balance	% Balance	Loan Count (Consol.)	% Loan Count
Residential House	84,380,463	82.23%	328	79.61%
Residential Unit	18,232,597	17.77%	84	20.39%
Residential - Inner City	0	0.00%	0	0.00%
Rural	0	0.00%	0	0.00%
Semi-Rural	0	0.00%	0	0.00%
Vacant Land	0	0.00%	0	0.00%
No Data	0	0.00%	0	0.00%
Total	102,613,061	100.00%	412	100.00%



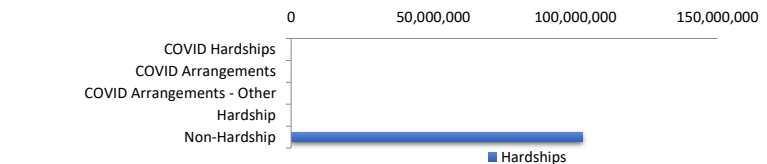
Arrears Distribution

Arrears Band	Balance	% Balance	Loan Count	% Loan Count
Current	102,613,061	100.00%	553	100.00%
31-60 days	0	0.00%	0	0.00%
61-90 days	0	0.00%	0	0.00%
91-120 days	0	0.00%	0	0.00%
121-150 days	0	0.00%	0	0.00%
151-180 days	0	0.00%	0	0.00%
181 days or more	0	0.00%	0	0.00%
Total	102,613,061	100.00%	553	100.00%



Hardships

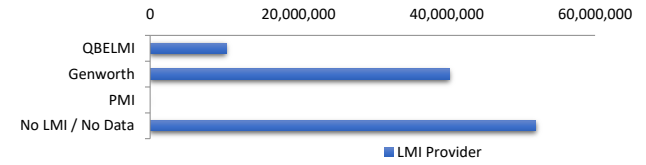
Hardships	Balance	% Balance	Loan Count (Consol.)	% Loan Count
COVID Hardships	0	0.00%	0	0.00%
COVID Arrangements	0	0.00%	0	0.00%
COVID Arrangements - Other	0	0.00%	0	0.00%
Hardship	0	0.00%	0	0.00%
Non-Hardship	102,613,061	100.00%	412	100.00%
Total	102,613,061	100.00%	412	100.00%



COVID Hardship – A deferral of loan repayments for a period from 3 to 6 months as a result of financial stresses due to Covid-19
 COVID Arrangement - A temporary change to the loan repayment type from 'Principal & Interest' to 'Interest Only' as a result of financial stresses due to Covid-19

LMI Provider

LMI Provider	Balance	% Balance	Loan Count (Consol.)	% Loan Count
QBELMI	10,263,562	10.00%	38	9.22%
Genworth	40,342,190	39.31%	167	40.53%
PMI	0	0.00%	0	0.00%
No LMI / No Data	52,007,309	50.68%	207	50.24%
Total	102,613,061	100.00%	412	100.00%



Property Occupancy

Property Occupancy	Balance	% Balance	Loan Count	% Loan Count
Investment	43,431,868	42.33%	194	35.08%
Owner Occupier	59,181,193	57.67%	359	64.92%
Total	102,613,061	100.00%	553	100.00%



Default Statistics

Default Data	Amount	No. of Loans
Defaulted Loans	0.00	0
Loss on Sale	0.00	0
Claims on LMI	0.00	0
Claims paid by LMI	0.00	0
Claims Denied/Reduced	0.00	0
Loss covered by Excess Spread	0.00	N/A