

AFG Series 2017-1
Collateral Report



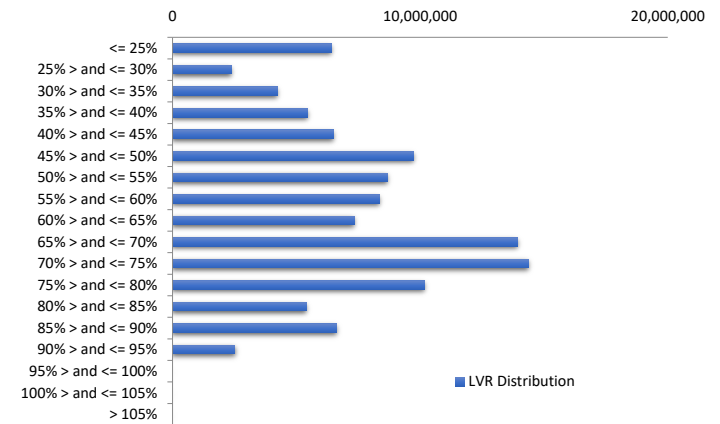
Model Period	49
Collection Period Start	01-Sep-21
Collection Period End	30-Sep-21
No. of Days	30
Interest Period Start	10-Sep-21
Interest Period End	10-Oct-21
No. of Days	31
Determination Date	06-Oct-21
Payment Date	11-Oct-21

Pool Statistics

Closing Balance of Mortgages	112,087,012
No. of Loans (Unconsolidated)	577
No. of Loans (Consolidated)	436
Average Loan Size (Unconsolidated)	194,258
Average Loan Size (Consolidated)	257,080
Largest Loan Size (Unconsolidated)	914,009
Largest Loan Size (Consolidated)	1,415,706
Smallest Loan Size (Unconsolidated)	(78,700)
Smallest Loan Size (Consolidated)	(78,700)
Weighted Average Interest Rate	3.27%
Weighted Average LVR	59.83%
Weighted Average Seasoning	69.83
Weighted Average Remaining Term	285.02

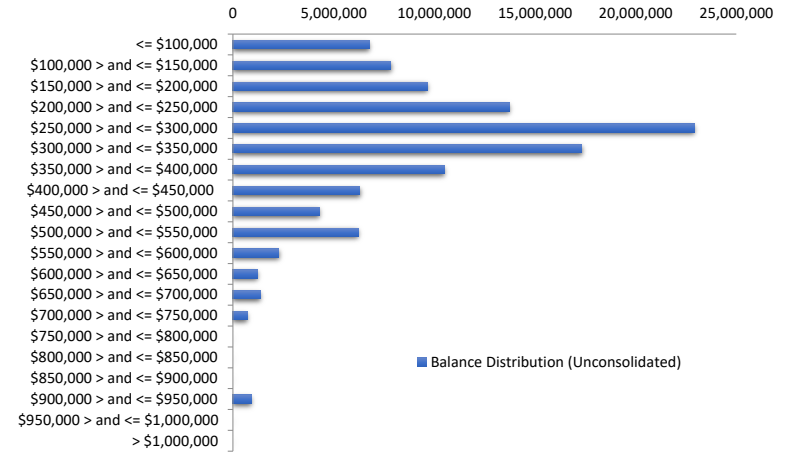
LVR Distribution

Current LTV	Balance	% Balance	Loan Count (Consol.)	% Loan Count
<= 25%	6,410,027	5.72%	94	21.56%
25% > and <= 30%	2,386,700	2.13%	19	4.36%
30% > and <= 35%	4,222,704	3.77%	23	5.28%
35% > and <= 40%	5,459,530	4.87%	22	5.05%
40% > and <= 45%	6,490,865	5.79%	23	5.28%
45% > and <= 50%	9,726,332	8.68%	28	6.42%
50% > and <= 55%	8,662,945	7.73%	26	5.96%
55% > and <= 60%	8,339,656	7.44%	26	5.96%
60% > and <= 65%	7,348,057	6.56%	24	5.50%
65% > and <= 70%	13,914,833	12.41%	43	9.86%
70% > and <= 75%	14,391,309	12.84%	40	9.17%
75% > and <= 80%	10,175,345	9.08%	26	5.96%
80% > and <= 85%	5,415,068	4.83%	16	3.67%
85% > and <= 90%	6,623,522	5.91%	20	4.59%
90% > and <= 95%	2,520,119	2.25%	6	1.38%
95% > and <= 100%	0	0.00%	0	0.00%
100% > and <= 105%	0	0.00%	0	0.00%
> 105%	0	0.00%	0	0.00%
Total	112,087,012	100.00%	436	100.00%



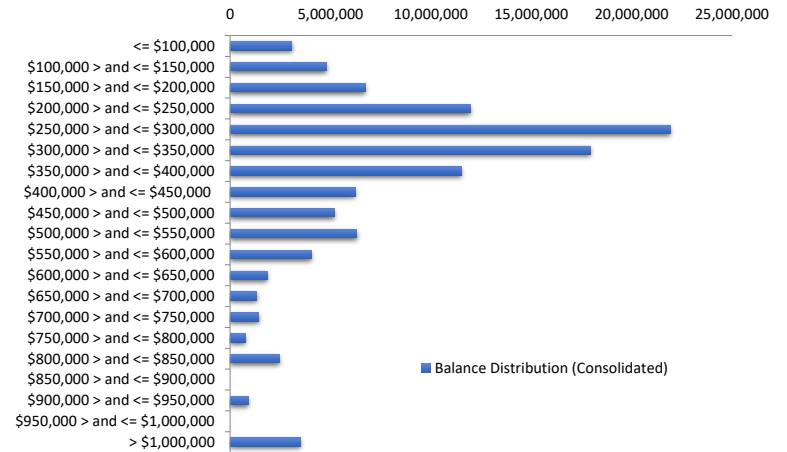
Balance Distribution (Unconsolidated)

Current Balance	Balance	% Balance	Loan Count	% Loan Count
<= \$100,000	6,763,083	6.03%	186	32.24%
\$100,000 > and <= \$150,000	7,850,071	7.00%	63	10.92%
\$150,000 > and <= \$200,000	9,678,995	8.64%	56	9.71%
\$200,000 > and <= \$250,000	13,715,629	12.24%	61	10.57%
\$250,000 > and <= \$300,000	22,906,428	20.44%	84	14.56%
\$300,000 > and <= \$350,000	17,335,701	15.47%	53	9.19%
\$350,000 > and <= \$400,000	10,520,368	9.39%	28	4.85%
\$400,000 > and <= \$450,000	6,308,452	5.63%	15	2.60%
\$450,000 > and <= \$500,000	4,275,969	3.81%	9	1.56%
\$500,000 > and <= \$550,000	6,235,401	5.56%	12	2.08%
\$550,000 > and <= \$600,000	2,279,203	2.03%	4	0.69%
\$600,000 > and <= \$650,000	1,239,684	1.11%	2	0.35%
\$650,000 > and <= \$700,000	1,360,137	1.21%	2	0.35%
\$700,000 > and <= \$750,000	703,883	0.63%	1	0.17%
\$750,000 > and <= \$800,000	0	0.00%	0	0.00%
\$800,000 > and <= \$850,000	0	0.00%	0	0.00%
\$850,000 > and <= \$900,000	0	0.00%	0	0.00%
\$900,000 > and <= \$950,000	914,009	0.82%	1	0.17%
\$950,000 > and <= \$1,000,000	0	0.00%	0	0.00%
> \$1,000,000	0	0.00%	0	0.00%
Total	112,087,012	100.00%	577	100.00%



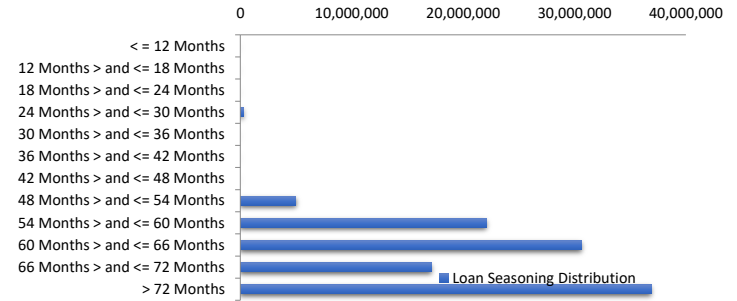
Balance Distribution (Consolidated)

Current Balance	Balance	% Balance	Loan Count (Consol.)	% Loan Count
<= \$100,000	3,071,535	2.74%	79	18.12%
\$100,000 > and <= \$150,000	4,819,258	4.30%	39	8.94%
\$150,000 > and <= \$200,000	6,762,218	6.03%	39	8.94%
\$200,000 > and <= \$250,000	11,975,618	10.68%	53	12.16%
\$250,000 > and <= \$300,000	21,922,654	19.56%	80	18.35%
\$300,000 > and <= \$350,000	17,937,720	16.00%	55	12.61%
\$350,000 > and <= \$400,000	11,547,621	10.30%	31	7.11%
\$400,000 > and <= \$450,000	6,246,107	5.57%	15	3.44%
\$450,000 > and <= \$500,000	5,197,367	4.64%	11	2.52%
\$500,000 > and <= \$550,000	6,319,663	5.64%	12	2.75%
\$550,000 > and <= \$600,000	4,033,998	3.60%	7	1.61%
\$600,000 > and <= \$650,000	1,861,056	1.66%	3	0.69%
\$650,000 > and <= \$700,000	1,328,206	1.18%	2	0.46%
\$700,000 > and <= \$750,000	1,423,642	1.27%	2	0.46%
\$750,000 > and <= \$800,000	762,041	0.68%	1	0.23%
\$800,000 > and <= \$850,000	2,453,314	2.19%	3	0.69%
\$850,000 > and <= \$900,000	0	0.00%	0	0.00%
\$900,000 > and <= \$950,000	914,009	0.82%	1	0.23%
\$950,000 > and <= \$1,000,000	0	0.00%	0	0.00%
> \$1,000,000	3,510,984	3.13%	3	0.69%
Total	112,087,012	100.00%	436	100.00%



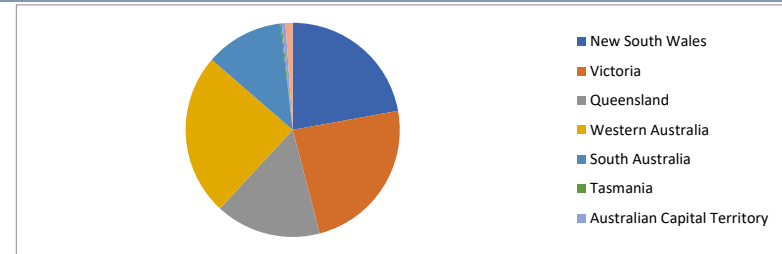
Loan Seasoning Distribution

Seasoning (Months)	Balance	% Balance	Loan Count	% Loan Count
<= 12 Months	0	0.00%	0	0.00%
12 Months > and <= 18 Months	0	0.00%	0	0.00%
18 Months > and <= 24 Months	0	0.00%	0	0.00%
24 Months > and <= 30 Months	289,284	0.26%	1	0.17%
30 Months > and <= 36 Months	0	0.00%	0	0.00%
36 Months > and <= 42 Months	0	0.00%	0	0.00%
42 Months > and <= 48 Months	0	0.00%	0	0.00%
48 Months > and <= 54 Months	4,996,175	4.46%	19	3.29%
54 Months > and <= 60 Months	22,104,948	19.72%	103	17.85%
60 Months > and <= 66 Months	30,592,477	27.29%	136	23.57%
66 Months > and <= 72 Months	17,187,620	15.33%	90	15.60%
> 72 Months	36,916,508	32.94%	228	39.51%
Total	112,087,012	100.00%	577	100.00%



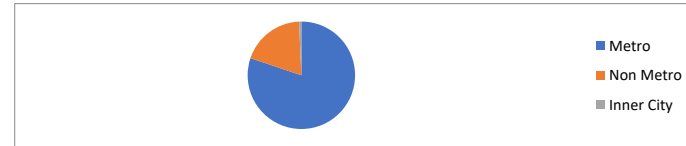
Geographic Distribution

Jurisdiction State	Balance	% Balance	Loan Count (Consol.)	% Loan Count
New South Wales	24,831,105	22.15%	93	21.33%
Victoria	26,668,367	23.79%	96	22.02%
Queensland	17,866,397	15.94%	69	15.83%
Western Australia	27,438,803	24.48%	107	24.54%
South Australia	13,229,602	11.80%	63	14.45%
Tasmania	225,140	0.20%	2	0.46%
Australian Capital Territory	617,780	0.55%	3	0.69%
Northern Territory	1,209,819	1.08%	3	0.69%
No Data	0	0.00%	0	0.00%
Total	112,087,012	100.00%	436	100.00%



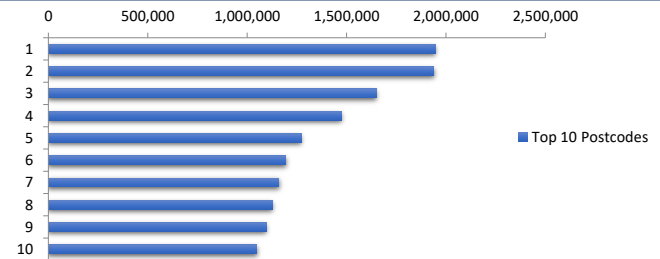
Locality

S&P Category	Balance	% Balance	Loan Count (Consol.)	% Loan Count
Metro	89,849,064	80.16%	339	77.75%
Non Metro	21,458,994	19.14%	95	21.79%
Inner City	778,954	0.69%	2	0.46%
No Data	0	0.00%	0	0.00%
Total	112,087,012	100.00%	436	100.00%



Top 10 Postcodes

Postcode	Balance	% Balance	Loan Count (Consol.)	% Loan Count
3029	1,947,679	1.74%	3	0.52%
5095	1,938,878	1.73%	5	0.87%
6170	1,649,925	1.47%	4	0.69%
6065	1,474,532	1.32%	4	0.69%
6055	1,272,526	1.14%	3	0.52%
2290	1,194,683	1.07%	3	0.52%
2570	1,159,962	1.03%	2	0.35%
4209	1,126,817	1.01%	3	0.52%
6164	1,098,475	0.98%	4	0.69%
5083	1,048,735	0.94%	2	0.35%
Total	13,912,211	12.41%	33	5.72%



Documentation

Document Type	Balance	% Balance	Loan Count	% Loan Count
Full Doc	112,087,012	100.00%	577	100.00%
Low Doc	0	0.00%	0	0.00%
No Doc	0	0.00%	0	0.00%
Total	112,087,012	100.00%	577	100.00%



Rate Type

Rate Type	Balance	% Balance	Loan Count	% Loan Count
Variable Rate	112,087,012	100.00%	577	100.00%
Fixed Rate	0	0.00%	0	0.00%
Total	112,087,012	100.00%	577	100.00%



Repayment Type

Repayment Type	Balance	% Balance	Loan Count	% Loan Count
Principal & Interest	102,953,803	91.85%	542	93.93%
Interest Only	9,133,209	8.15%	35	6.07%
Non-Billing	0	0.00%	0	0.00%
Total	112,087,012	100.00%	577	100.00%



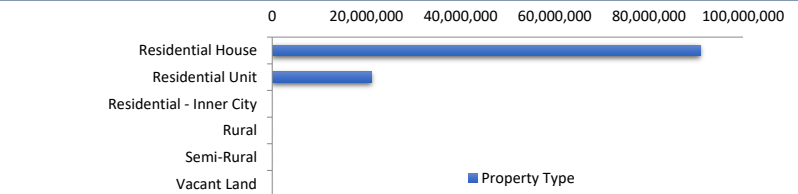
Loan Type

Product Category	Balance	% Balance	Loan Count	% Loan Count
Line of Credit	0	0.00%	0	0.00%
Term Loan	112,087,012	100.00%	577	100.00%
Total	112,087,012	100.00%	577	100.00%



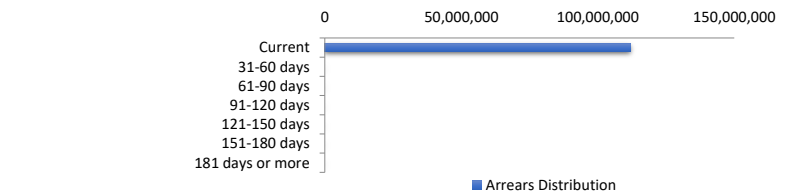
Property Type

Property Type	Balance	% Balance	Loan Count (Consol.)	% Loan Count
Residential House	90,936,890	81.13%	343	78.67%
Residential Unit	21,150,122	18.87%	93	21.33%
Residential - Inner City	0	0.00%	0	0.00%
Rural	0	0.00%	0	0.00%
Semi-Rural	0	0.00%	0	0.00%
Vacant Land	0	0.00%	0	0.00%
No Data	0	0.00%	0	0.00%
Total	112,087,012	100.00%	436	100.00%



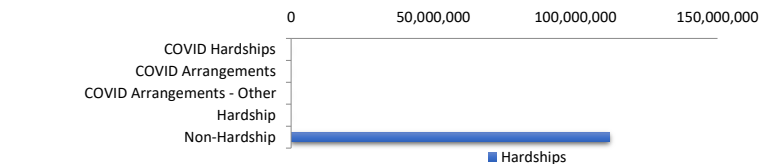
Arrears Distribution

Arrears Band	Balance	% Balance	Loan Count	% Loan Count
Current	112,087,012	100.00%	577	100.00%
31-60 days	0	0.00%	0	0.00%
61-90 days	0	0.00%	0	0.00%
91-120 days	0	0.00%	0	0.00%
121-150 days	0	0.00%	0	0.00%
151-180 days	0	0.00%	0	0.00%
181 days or more	0	0.00%	0	0.00%
Total	112,087,012	100.00%	577	100.00%



Hardships

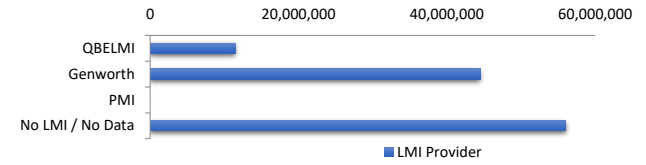
Hardships	Balance	% Balance	Loan Count (Consol.)	% Loan Count
COVID Hardships	0	0.00%	0	0.00%
COVID Arrangements	0	0.00%	0	0.00%
COVID Arrangements - Other	0	0.00%	0	0.00%
Hardship	0	0.00%	0	0.00%
Non-Hardship	112,087,012	100.00%	436	100.00%
Total	112,087,012	100.00%	436	100.00%



COVID Hardship – A deferral of loan repayments for a period from 3 to 6 months as a result of financial stresses due to Covid-19
 COVID Arrangement - A temporary change to the loan repayment type from 'Principal & Interest' to 'Interest Only' as a result of financial stresses due to Covid-19

LMI Provider

LMI Provider	Balance	% Balance	Loan Count (Consol.)	% Loan Count
QBELMI	11,518,954	10.28%	42	9.63%
Genworth	44,504,392	39.71%	179	41.06%
PMI	0	0.00%	0	0.00%
No LMI / No Data	56,063,666	50.02%	215	49.31%
Total	112,087,012	100.00%	436	100.00%



Property Occupancy

Property Occupancy	Balance	% Balance	Loan Count	% Loan Count
Investment	47,592,292	42.46%	210	36.40%
Owner Occupier	64,494,720	57.54%	367	63.60%
Total	112,087,012	100.00%	577	100.00%



Default Statistics

Default Data	Amount	No. of Loans
Defaulted Loans	0.00	0
Loss on Sale	0.00	0
Claims on LMI	0.00	0
Claims paid by LMI	0.00	0
Claims Denied/Reduced	0.00	0
Loss covered by Excess Spread	0.00	N/A