

AFG Series 2017-1
Collateral Report



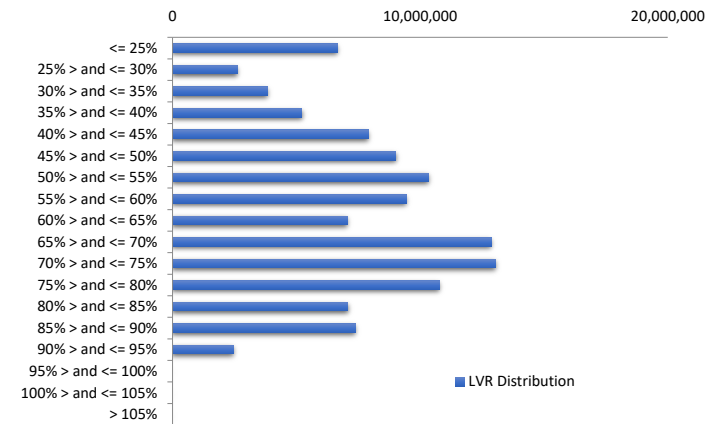
Model Period	48
Collection Period Start	01-Aug-21
Collection Period End	31-Aug-21
No. of Days	31
Interest Period Start	10-Aug-21
Interest Period End	09-Sep-21
No. of Days	31
Determination Date	07-Sep-21
Payment Date	10-Sep-21

Pool Statistics

Closing Balance of Mortgages	115,726,468
No. of Loans (Unconsolidated)	596
No. of Loans (Consolidated)	445
Average Loan Size (Unconsolidated)	194,172
Average Loan Size (Consolidated)	260,059
Largest Loan Size (Unconsolidated)	915,161
Largest Loan Size (Consolidated)	1,413,307
Smallest Loan Size (Unconsolidated)	(61,347)
Smallest Loan Size (Consolidated)	(55,754)
Weighted Average Interest Rate	3.31%
Weighted Average LVR	59.89%
Weighted Average Seasoning	69.03
Weighted Average Remaining Term	285.93

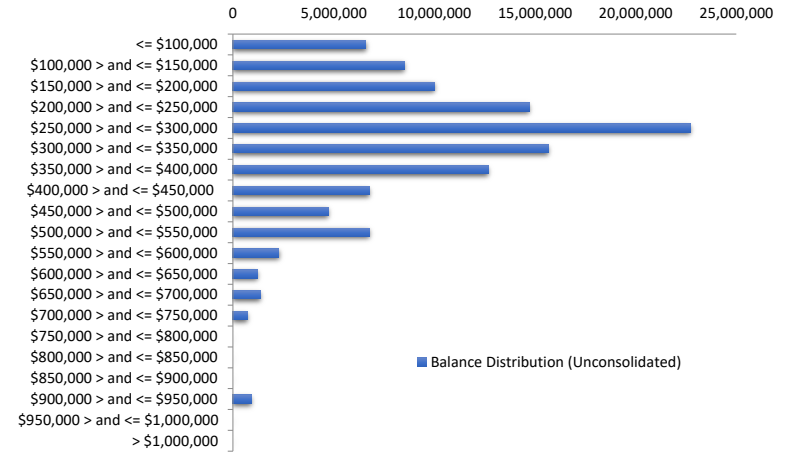
LVR Distribution

Current LTV	Balance	% Balance	Loan Count (Consol.)	% Loan Count
<= 25%	6,668,245	5.76%	96	21.57%
25% > and <= 30%	2,621,464	2.27%	18	4.04%
30% > and <= 35%	3,816,359	3.30%	22	4.94%
35% > and <= 40%	5,224,714	4.51%	21	4.72%
40% > and <= 45%	7,920,612	6.84%	28	6.29%
45% > and <= 50%	9,017,358	7.79%	26	5.84%
50% > and <= 55%	10,319,917	8.92%	31	6.97%
55% > and <= 60%	9,442,671	8.16%	29	6.52%
60% > and <= 65%	7,066,649	6.11%	22	4.94%
65% > and <= 70%	12,881,599	11.13%	38	8.54%
70% > and <= 75%	13,034,831	11.26%	38	8.54%
75% > and <= 80%	10,779,170	9.31%	28	6.29%
80% > and <= 85%	7,082,732	6.12%	19	4.27%
85% > and <= 90%	7,377,923	6.38%	23	5.17%
90% > and <= 95%	2,472,226	2.14%	6	1.35%
95% > and <= 100%	0	0.00%	0	0.00%
100% > and <= 105%	0	0.00%	0	0.00%
> 105%	0	0.00%	0	0.00%
Total	115,726,468	100.00%	445	100.00%



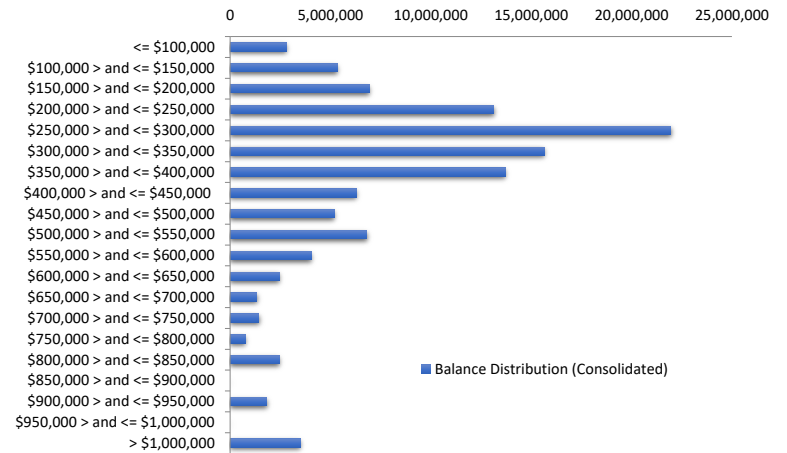
Balance Distribution (Unconsolidated)

Current Balance	Balance	% Balance	Loan Count	% Loan Count
<= \$100,000	6,605,633	5.71%	190	31.88%
\$100,000 > and <= \$150,000	8,497,449	7.34%	69	11.58%
\$150,000 > and <= \$200,000	10,031,283	8.67%	58	9.73%
\$200,000 > and <= \$250,000	14,723,671	12.72%	65	10.91%
\$250,000 > and <= \$300,000	22,699,793	19.62%	83	13.93%
\$300,000 > and <= \$350,000	15,683,981	13.55%	48	8.05%
\$350,000 > and <= \$400,000	12,688,582	10.96%	34	5.70%
\$400,000 > and <= \$450,000	6,766,502	5.85%	16	2.68%
\$450,000 > and <= \$500,000	4,743,173	4.10%	10	1.68%
\$500,000 > and <= \$550,000	6,771,679	5.85%	13	2.18%
\$550,000 > and <= \$600,000	2,279,769	1.97%	4	0.67%
\$600,000 > and <= \$650,000	1,239,631	1.07%	2	0.34%
\$650,000 > and <= \$700,000	1,363,440	1.18%	2	0.34%
\$700,000 > and <= \$750,000	716,723	0.62%	1	0.17%
\$750,000 > and <= \$800,000	0	0.00%	0	0.00%
\$800,000 > and <= \$850,000	0	0.00%	0	0.00%
\$850,000 > and <= \$900,000	0	0.00%	0	0.00%
\$900,000 > and <= \$950,000	915,161	0.79%	1	0.17%
\$950,000 > and <= \$1,000,000	0	0.00%	0	0.00%
> \$1,000,000	0	0.00%	0	0.00%
Total	115,726,468	100.00%	596	100.00%



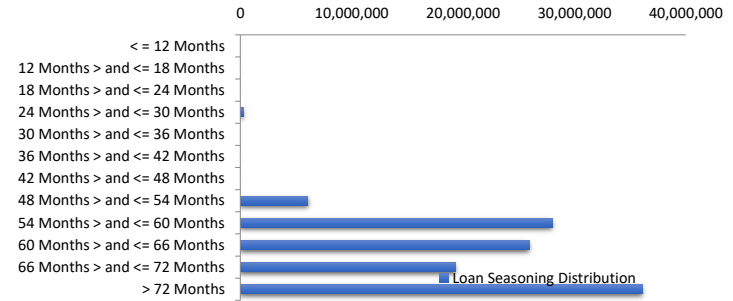
Balance Distribution (Consolidated)

Current Balance	Balance	% Balance	Loan Count (Consol.)	% Loan Count
<= \$100,000	2,820,495	2.44%	75	16.85%
\$100,000 > and <= \$150,000	5,359,068	4.63%	44	9.89%
\$150,000 > and <= \$200,000	6,936,510	5.99%	40	8.99%
\$200,000 > and <= \$250,000	13,135,069	11.35%	58	13.03%
\$250,000 > and <= \$300,000	21,960,957	18.98%	80	17.98%
\$300,000 > and <= \$350,000	15,669,554	13.54%	48	10.79%
\$350,000 > and <= \$400,000	13,706,309	11.84%	37	8.31%
\$400,000 > and <= \$450,000	6,282,509	5.43%	15	3.37%
\$450,000 > and <= \$500,000	5,208,563	4.50%	11	2.47%
\$500,000 > and <= \$550,000	6,817,419	5.89%	13	2.92%
\$550,000 > and <= \$600,000	4,030,589	3.48%	7	1.57%
\$600,000 > and <= \$650,000	2,464,903	2.13%	4	0.90%
\$650,000 > and <= \$700,000	1,337,384	1.16%	2	0.45%
\$700,000 > and <= \$750,000	1,437,787	1.24%	2	0.45%
\$750,000 > and <= \$800,000	764,022	0.66%	1	0.22%
\$800,000 > and <= \$850,000	2,452,317	2.12%	3	0.67%
\$850,000 > and <= \$900,000	0	0.00%	0	0.00%
\$900,000 > and <= \$950,000	1,826,985	1.58%	2	0.45%
\$950,000 > and <= \$1,000,000	0	0.00%	0	0.00%
> \$1,000,000	3,516,028	3.04%	3	0.67%
Total	115,726,468	100.00%	445	100.00%



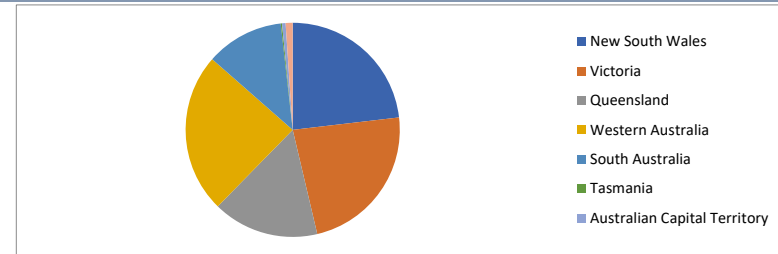
Loan Seasoning Distribution

Seasoning (Months)	Balance	% Balance	Loan Count	% Loan Count
<= 12 Months	0	0.00%	0	0.00%
12 Months > and <= 18 Months	0	0.00%	0	0.00%
18 Months > and <= 24 Months	0	0.00%	0	0.00%
24 Months > and <= 30 Months	290,124	0.25%	1	0.17%
30 Months > and <= 36 Months	0	0.00%	0	0.00%
36 Months > and <= 42 Months	0	0.00%	0	0.00%
42 Months > and <= 48 Months	0	0.00%	0	0.00%
48 Months > and <= 54 Months	6,055,975	5.23%	27	4.53%
54 Months > and <= 60 Months	27,981,008	24.18%	118	19.80%
60 Months > and <= 66 Months	25,968,588	22.44%	125	20.97%
66 Months > and <= 72 Months	19,335,851	16.71%	109	18.29%
> 72 Months	36,094,922	31.19%	216	36.24%
Total	115,726,468	100.00%	596	100.00%



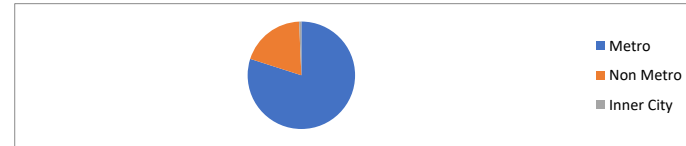
Geographic Distribution

Jurisdiction State	Balance	% Balance	Loan Count (Consol.)	% Loan Count
New South Wales	26,788,416	23.15%	96	21.57%
Victoria	26,809,714	23.17%	97	21.80%
Queensland	18,536,639	16.02%	71	15.96%
Western Australia	27,930,531	24.13%	108	24.27%
South Australia	13,589,519	11.74%	65	14.61%
Tasmania	223,078	0.19%	2	0.45%
Australian Capital Territory	623,129	0.54%	3	0.67%
Northern Territory	1,225,441	1.06%	3	0.67%
No Data	0	0.00%	0	0.00%
Total	115,726,468	100.00%	445	100.00%



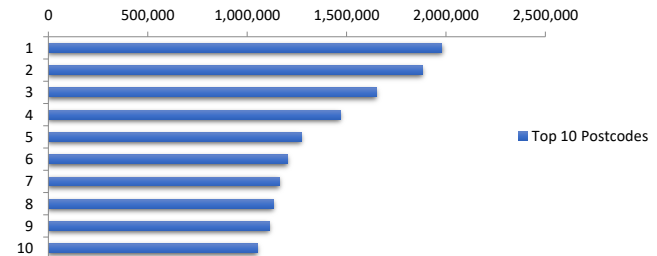
Locality

S&P Category	Balance	% Balance	Loan Count (Consol.)	% Loan Count
Metro	92,508,188	79.94%	348	78.20%
Non Metro	22,432,402	19.38%	95	21.35%
Inner City	785,878	0.68%	2	0.45%
No Data	0	0.00%	0	0.00%
Total	115,726,468	100.00%	445	100.00%



Top 10 Postcodes

Postcode	Balance	% Balance	Loan Count (Consol.)	% Loan Count
5095	1,979,967	1.71%	5	0.84%
3029	1,881,349	1.63%	3	0.50%
6170	1,650,599	1.43%	4	0.67%
6065	1,470,043	1.27%	4	0.67%
6055	1,273,985	1.10%	3	0.50%
2290	1,203,767	1.04%	3	0.50%
2570	1,161,683	1.00%	2	0.34%
4209	1,131,050	0.98%	3	0.50%
6164	1,112,909	0.96%	4	0.67%
5083	1,050,265	0.91%	2	0.34%
Total	13,915,619	12.02%	33	5.54%



Documentation

Document Type	Balance	% Balance	Loan Count	% Loan Count
Full Doc	115,726,468	100.00%	596	100.00%
Low Doc	0	0.00%	0	0.00%
No Doc	0	0.00%	0	0.00%
Total	115,726,468	100.00%	596	100.00%



Rate Type

Rate Type	Balance	% Balance	Loan Count	% Loan Count
Variable Rate	115,726,468	100.00%	596	100.00%
Fixed Rate	0	0.00%	0	0.00%
Total	115,726,468	100.00%	596	100.00%



Repayment Type

Repayment Type	Balance	% Balance	Loan Count	% Loan Count
Principal & Interest	102,879,232	88.90%	555	93.12%
Interest Only	12,847,236	11.10%	41	6.88%
Non-Billing	0	0.00%	0	0.00%
Total	115,726,468	100.00%	596	100.00%



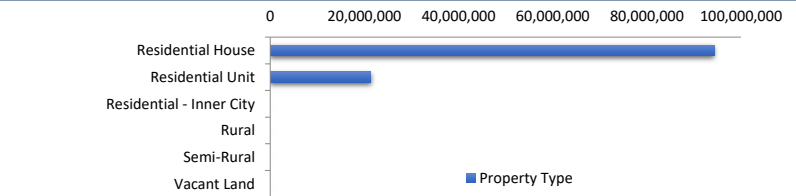
Loan Type

Product Category	Balance	% Balance	Loan Count	% Loan Count
Line of Credit	0	0.00%	0	0.00%
Term Loan	115,726,468	100.00%	596	100.00%
Total	115,726,468	100.00%	596	100.00%



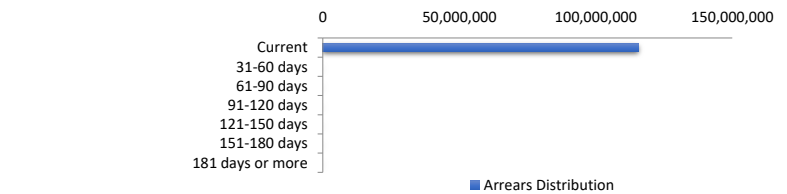
Property Type

Property Type	Balance	% Balance	Loan Count (Consol.)	% Loan Count
Residential House	94,338,835	81.52%	349	78.43%
Residential Unit	21,387,632	18.48%	96	21.57%
Residential - Inner City	0	0.00%	0	0.00%
Rural	0	0.00%	0	0.00%
Semi-Rural	0	0.00%	0	0.00%
Vacant Land	0	0.00%	0	0.00%
No Data	0	0.00%	0	0.00%
Total	115,726,468	100.00%	445	100.00%



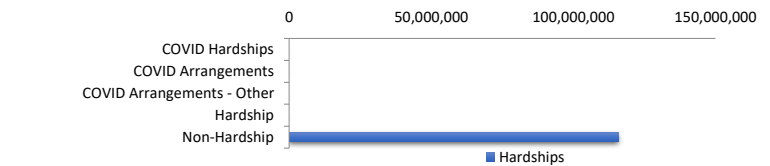
Arrears Distribution

Arrears Band	Balance	% Balance	Loan Count	% Loan Count
Current	115,726,468	100.00%	596	100.00%
31-60 days	0	0.00%	0	0.00%
61-90 days	0	0.00%	0	0.00%
91-120 days	0	0.00%	0	0.00%
121-150 days	0	0.00%	0	0.00%
151-180 days	0	0.00%	0	0.00%
181 days or more	0	0.00%	0	0.00%
Total	115,726,468	100.00%	596	100.00%



Hardships

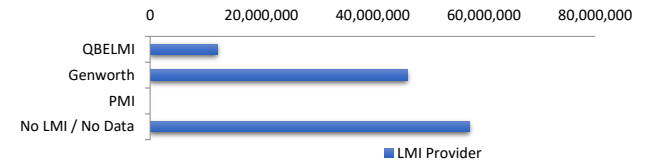
Hardships	Balance	% Balance	Loan Count (Consol.)	% Loan Count
COVID Hardships	0	0.00%	0	0.00%
COVID Arrangements	0	0.00%	0	0.00%
COVID Arrangements - Other	0	0.00%	0	0.00%
Hardship	0	0.00%	0	0.00%
Non-Hardship	115,726,468	100.00%	445	100.00%
Total	115,726,468	100.00%	445	100.00%



COVID Hardship – A deferral of loan repayments for a period from 3 to 6 months as a result of financial stresses due to Covid-19
 COVID Arrangement - A temporary change to the loan repayment type from 'Principal & Interest' to 'Interest Only' as a result of financial stresses due to Covid-19

LMI Provider

LMI Provider	Balance	% Balance	Loan Count (Consol.)	% Loan Count
QBELMI	12,055,192	10.42%	44	9.89%
Genworth	46,192,004	39.91%	185	41.57%
PMI	0	0.00%	0	0.00%
No LMI / No Data	57,479,271	49.67%	216	48.54%
Total	115,726,468	100.00%	445	100.00%



Property Occupancy

Property Occupancy	Balance	% Balance	Loan Count	% Loan Count
Investment	49,580,854	42.84%	217	36.41%
Owner Occupier	66,145,613	57.16%	379	63.59%
Total	115,726,468	100.00%	596	100.00%



Default Statistics

Default Data	Amount	No. of Loans
Defaulted Loans	0.00	0
Loss on Sale	0.00	0
Claims on LMI	0.00	0
Claims paid by LMI	0.00	0
Claims Denied/Reduced	0.00	0
Loss covered by Excess Spread	0.00	N/A