

AFG Series 2017-1
Collateral Report



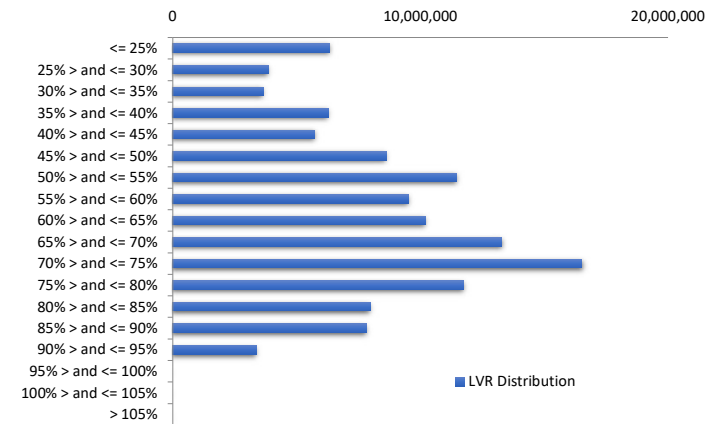
Model Period	45
Collection Period Start	01-May-21
Collection Period End	31-May-21
No. of Days	31
Interest Period Start	10-May-21
Interest Period End	09-Jun-21
No. of Days	31
Determination Date	04-Jun-21
Payment Date	10-Jun-21

Pool Statistics

Closing Balance of Mortgages	126,403,598
No. of Loans (Unconsolidated)	629
No. of Loans (Consolidated)	471
Average Loan Size (Unconsolidated)	200,960
Average Loan Size (Consolidated)	268,373
Largest Loan Size (Unconsolidated)	915,161
Largest Loan Size (Consolidated)	1,410,767
Smallest Loan Size (Unconsolidated)	(109,013)
Smallest Loan Size (Consolidated)	(15,833)
Weighted Average Interest Rate	3.36%
Weighted Average LVR	60.78%
Weighted Average Seasoning	66.25
Weighted Average Remaining Term	288.68

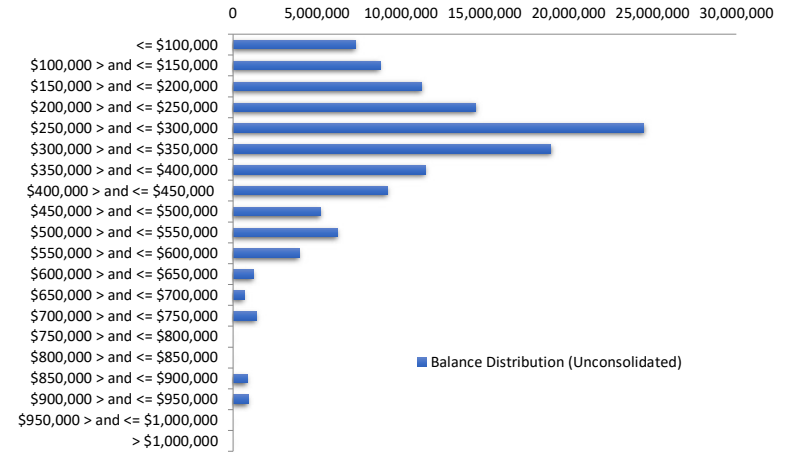
LVR Distribution

Current LTV	Balance	% Balance	Loan Count (Consol.)	% Loan Count
<= 25%	6,344,093	5.02%	91	19.32%
25% > and <= 30%	3,858,115	3.05%	21	4.46%
30% > and <= 35%	3,648,474	2.89%	21	4.46%
35% > and <= 40%	6,286,057	4.97%	26	5.52%
40% > and <= 45%	5,749,628	4.55%	24	5.10%
45% > and <= 50%	8,613,808	6.81%	27	5.73%
50% > and <= 55%	11,470,256	9.07%	31	6.58%
55% > and <= 60%	9,517,269	7.53%	27	5.73%
60% > and <= 65%	10,193,429	8.06%	33	7.01%
65% > and <= 70%	13,284,520	10.51%	39	8.28%
70% > and <= 75%	16,527,186	13.07%	48	10.19%
75% > and <= 80%	11,727,620	9.28%	31	6.58%
80% > and <= 85%	7,979,730	6.31%	20	4.25%
85% > and <= 90%	7,824,175	6.19%	23	4.88%
90% > and <= 95%	3,379,237	2.67%	9	1.91%
95% > and <= 100%	0	0.00%	0	0.00%
100% > and <= 105%	0	0.00%	0	0.00%
> 105%	0	0.00%	0	0.00%
Total	126,403,598	100.00%	471	100.00%



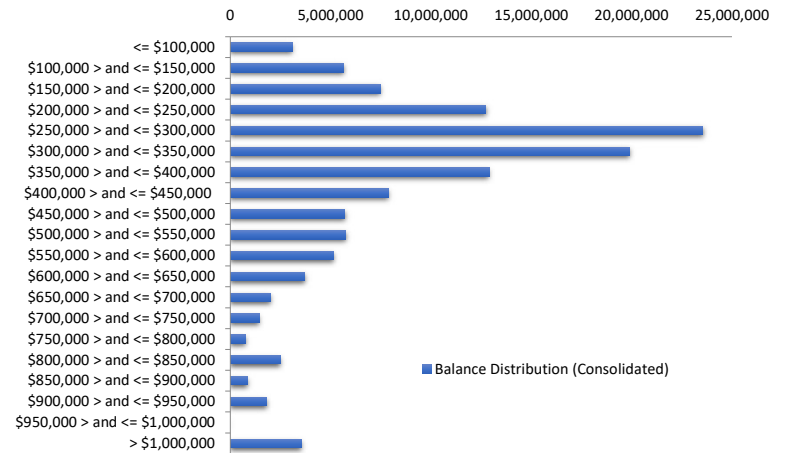
Balance Distribution (Unconsolidated)

Current Balance	Balance	% Balance	Loan Count	% Loan Count
<= \$100,000	7,297,008	5.77%	193	30.68%
\$100,000 > and <= \$150,000	8,774,261	6.94%	70	11.13%
\$150,000 > and <= \$200,000	11,267,458	8.91%	64	10.17%
\$200,000 > and <= \$250,000	14,460,430	11.44%	64	10.17%
\$250,000 > and <= \$300,000	24,462,781	19.35%	90	14.31%
\$300,000 > and <= \$350,000	18,951,343	14.99%	58	9.22%
\$350,000 > and <= \$400,000	11,469,997	9.07%	31	4.93%
\$400,000 > and <= \$450,000	9,212,238	7.29%	22	3.50%
\$450,000 > and <= \$500,000	5,229,036	4.14%	11	1.75%
\$500,000 > and <= \$550,000	6,227,204	4.93%	12	1.91%
\$550,000 > and <= \$600,000	3,945,211	3.12%	7	1.11%
\$600,000 > and <= \$650,000	1,247,684	0.99%	2	0.32%
\$650,000 > and <= \$700,000	668,372	0.53%	1	0.16%
\$700,000 > and <= \$750,000	1,411,882	1.12%	2	0.32%
\$750,000 > and <= \$800,000	0	0.00%	0	0.00%
\$800,000 > and <= \$850,000	0	0.00%	0	0.00%
\$850,000 > and <= \$900,000	863,530	0.68%	1	0.16%
\$900,000 > and <= \$950,000	915,161	0.72%	1	0.16%
\$950,000 > and <= \$1,000,000	0	0.00%	0	0.00%
> \$1,000,000	0	0.00%	0	0.00%
Total	126,403,598	100.00%	629	100.00%



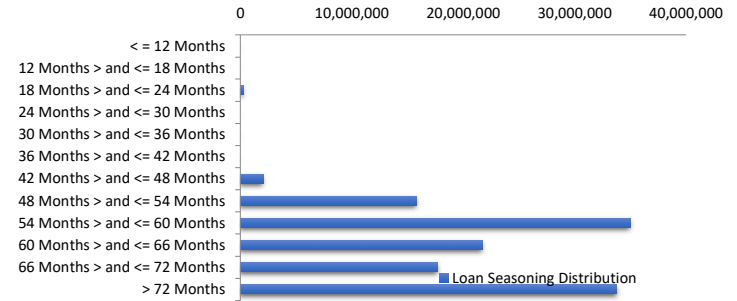
Balance Distribution (Consolidated)

Current Balance	Balance	% Balance	Loan Count (Consol.)	% Loan Count
<= \$100,000	3,074,644	2.43%	74	15.71%
\$100,000 > and <= \$150,000	5,654,226	4.47%	45	9.55%
\$150,000 > and <= \$200,000	7,467,309	5.91%	42	8.92%
\$200,000 > and <= \$250,000	12,731,012	10.07%	56	11.89%
\$250,000 > and <= \$300,000	23,532,506	18.62%	86	18.26%
\$300,000 > and <= \$350,000	19,890,595	15.74%	61	12.95%
\$350,000 > and <= \$400,000	12,884,624	10.19%	35	7.43%
\$400,000 > and <= \$450,000	7,890,523	6.24%	19	4.03%
\$450,000 > and <= \$500,000	5,720,565	4.53%	12	2.55%
\$500,000 > and <= \$550,000	5,759,260	4.56%	11	2.34%
\$550,000 > and <= \$600,000	5,147,146	4.07%	9	1.91%
\$600,000 > and <= \$650,000	3,719,765	2.94%	6	1.27%
\$650,000 > and <= \$700,000	2,010,097	1.59%	3	0.64%
\$700,000 > and <= \$750,000	1,432,016	1.13%	2	0.42%
\$750,000 > and <= \$800,000	766,628	0.61%	1	0.21%
\$800,000 > and <= \$850,000	2,492,788	1.97%	3	0.64%
\$850,000 > and <= \$900,000	863,530	0.68%	1	0.21%
\$900,000 > and <= \$950,000	1,826,121	1.44%	2	0.42%
\$950,000 > and <= \$1,000,000	0	0.00%	0	0.00%
> \$1,000,000	3,540,244	2.80%	3	0.64%
Total	126,403,598	100.00%	471	100.00%



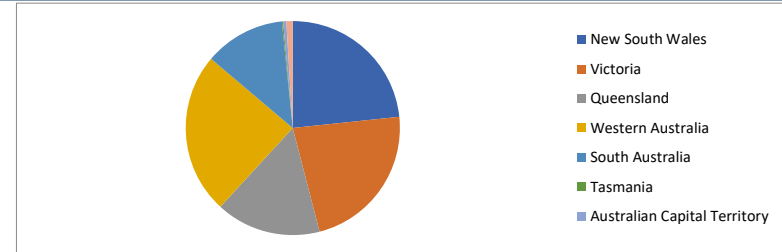
Loan Seasoning Distribution

Seasoning (Months)	Balance	% Balance	Loan Count	% Loan Count
<= 12 Months	0	0.00%	0	0.00%
12 Months > and <= 18 Months	0	0.00%	0	0.00%
18 Months > and <= 24 Months	292,099	0.23%	1	0.16%
24 Months > and <= 30 Months	0	0.00%	0	0.00%
30 Months > and <= 36 Months	0	0.00%	0	0.00%
36 Months > and <= 42 Months	0	0.00%	0	0.00%
42 Months > and <= 48 Months	2,060,193	1.63%	8	1.27%
48 Months > and <= 54 Months	15,815,851	12.51%	79	12.56%
54 Months > and <= 60 Months	34,986,989	27.68%	145	23.05%
60 Months > and <= 66 Months	21,743,599	17.20%	107	17.01%
66 Months > and <= 72 Months	17,728,803	14.03%	90	14.31%
> 72 Months	33,776,065	26.72%	199	31.64%
Total	126,403,598	100.00%	629	100.00%



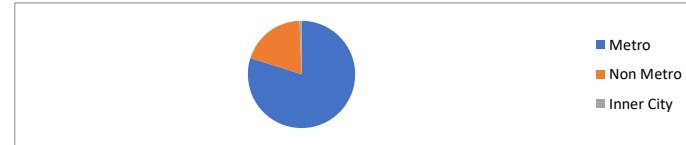
Geographic Distribution

Jurisdiction State	Balance	% Balance	Loan Count (Consol.)	% Loan Count
New South Wales	29,488,523	23.33%	103	21.87%
Victoria	28,641,440	22.66%	102	21.66%
Queensland	20,043,659	15.86%	77	16.35%
Western Australia	30,744,695	24.32%	112	23.78%
South Australia	15,407,905	12.19%	69	14.65%
Tasmania	226,774	0.18%	2	0.42%
Australian Capital Territory	620,030	0.49%	3	0.64%
Northern Territory	1,230,571	0.97%	3	0.64%
No Data	0	0.00%	0	0.00%
Total	126,403,598	100.00%	471	100.00%



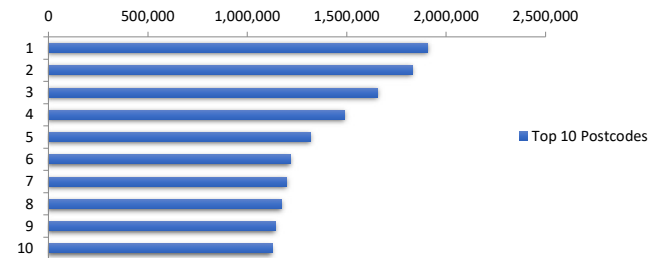
Locality

S&P Category	Balance	% Balance	Loan Count (Consol.)	% Loan Count
Metro	101,037,696	79.93%	367	77.92%
Non Metro	24,574,055	19.44%	101	21.44%
Inner City	791,848	0.63%	3	0.64%
No Data	0	0.00%	0	0.00%
Total	126,403,598	100.00%	471	100.00%



Top 10 Postcodes

Postcode	Balance	% Balance	Loan Count (Consol.)	% Loan Count
3029	1,907,998	1.51%	3	0.48%
5095	1,829,723	1.45%	5	0.79%
6170	1,656,057	1.31%	4	0.64%
6065	1,491,215	1.18%	4	0.64%
6055	1,317,282	1.04%	3	0.48%
6154	1,217,951	0.96%	3	0.48%
2290	1,198,332	0.95%	3	0.48%
2570	1,172,881	0.93%	2	0.32%
4209	1,141,147	0.90%	3	0.48%
6164	1,126,353	0.89%	4	0.64%
Total	14,058,937	11.12%	34	5.41%



Documentation

Document Type	Balance	% Balance	Loan Count	% Loan Count
Full Doc	126,403,598	100.00%	629	100.00%
Low Doc	0	0.00%	0	0.00%
No Doc	0	0.00%	0	0.00%
Total	126,403,598	100.00%	629	100.00%



Rate Type

Rate Type	Balance	% Balance	Loan Count	% Loan Count
Variable Rate	126,403,598	100.00%	629	100.00%
Fixed Rate	0	0.00%	0	0.00%
Total	126,403,598	100.00%	629	100.00%



Repayment Type

Repayment Type	Balance	% Balance	Loan Count	% Loan Count
Principal & Interest	112,375,266	88.90%	583	92.69%
Interest Only	14,028,333	11.10%	46	7.31%
Non-Billing	0	0.00%	0	0.00%
Total	126,403,598	100.00%	629	100.00%



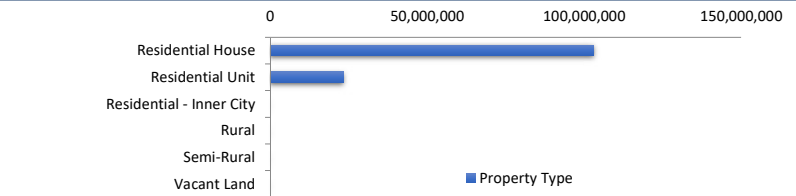
Loan Type

Product Category	Balance	% Balance	Loan Count	% Loan Count
Line of Credit	0	0.00%	0	0.00%
Term Loan	126,403,598	100.00%	629	100.00%
Total	126,403,598	100.00%	629	100.00%



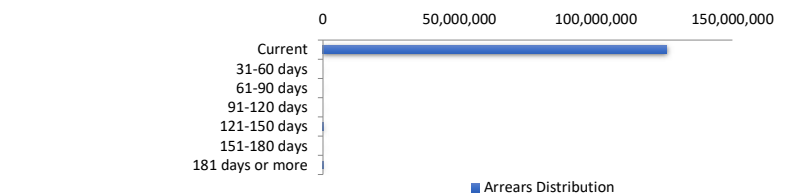
Property Type

Property Type	Balance	% Balance	Loan Count (Consol.)	% Loan Count
Residential House	102,998,088	81.48%	369	78.34%
Residential Unit	23,405,510	18.52%	102	21.66%
Residential - Inner City	0	0.00%	0	0.00%
Rural	0	0.00%	0	0.00%
Semi-Rural	0	0.00%	0	0.00%
Vacant Land	0	0.00%	0	0.00%
No Data	0	0.00%	0	0.00%
Total	126,403,598	100.00%	471	100.00%



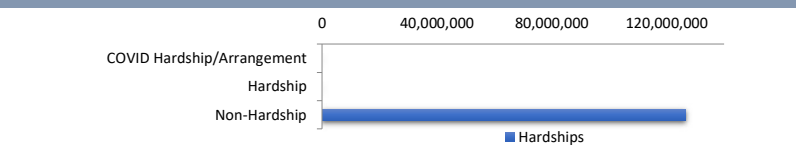
Arrears Distribution

Arrears Band	Balance	% Balance	Loan Count	% Loan Count
Current	125,896,159	99.60%	626	99.52%
31-60 days	0	0.00%	0	0.00%
61-90 days	0	0.00%	0	0.00%
91-120 days	0	0.00%	0	0.00%
121-150 days	315,555	0.25%	2	0.32%
151-180 days	0	0.00%	0	0.00%
181 days or more	191,884	0.15%	1	0.16%
Total	126,403,598	100.00%	629	100.00%



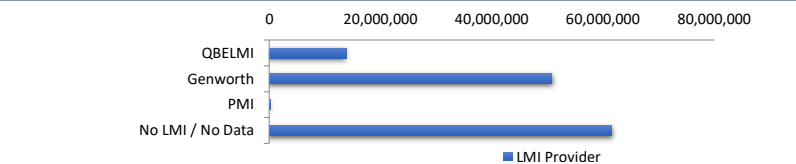
Hardships

Hardships	Balance	% Balance	Loan Count (Consol.)	% Loan Count
COVID Hardship/Arrangement	0	0.00%	0	0.00%
Hardship	0	0.00%	0	0.00%
Non-Hardship	126,403,598	100.00%	471	100.00%
Total	126,403,598	100.00%	471	100.00%



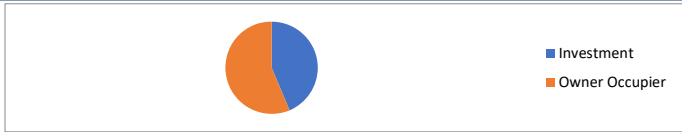
LMI Provider

LMI Provider	Balance	% Balance	Loan Count (Consol.)	% Loan Count
QBELMI	13,775,591	10.90%	48	10.19%
Genworth	50,828,273	40.21%	188	39.92%
PMI	276,014	0.22%	1	0.21%
No LMI / No Data	61,523,721	48.67%	234	49.68%
Total	126,403,598	100.00%	471	100.00%



Property Occupancy

Property Occupancy	Balance	% Balance	Loan Count	% Loan Count
Investment	55,165,496	43.64%	234	37.20%
Owner Occupier	71,238,102	56.36%	395	62.80%
Total	126,403,598	100.00%	629	100.00%



Default Statistics

Default Data	Amount	No. of Loans
Defaulted Loans	507,438.97	3
Loss on Sale	0.00	0
Claims on LMI	0.00	0
Claims paid by LMI	0.00	0
Claims Denied/Reduced	0.00	0
Loss covered by Excess Spread	0.00	N/A