

**AFG Series 2018-1
Collateral Report**



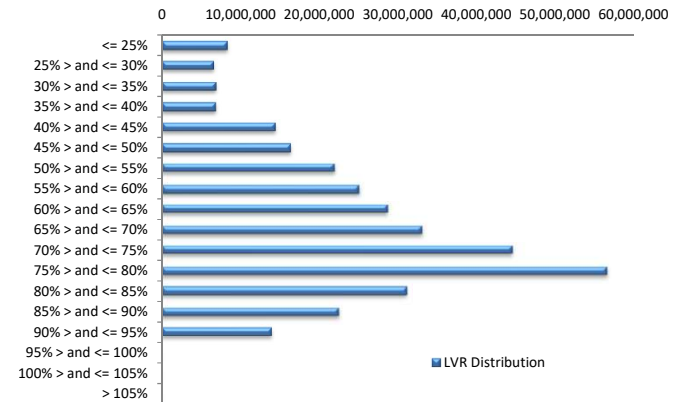
Model Period	1
Collection Period Start	27-Jun-18
Collection Period End	31-Jul-18
No. of Days	35
Interest Period Start	27-Jun-18
Interest Period End	09-Aug-18
No. of Days	44
Determination Date	07-Aug-18
Payment Date	10-Aug-18

Pool Statistics

Closing Balance of Mortgages	336,767,241
No. of Loans (Unconsolidated)	1,325
No. of Loans (Consolidated)	978
Average Loan Size (Unconsolidated)	254,164
Average Loan Size (Consolidated)	344,343
Largest Loan Size (Unconsolidated)	967,596
Largest Loan Size (Consolidated)	1,044,357
Smallest Loan Size (Unconsolidated)	(42,615)
Smallest Loan Size (Consolidated)	(1,458)
Weighted Average Interest Rate	4.27%
Weighted Average LVR	66.05%
Weighted Average Seasoning	29.59
Weighted Average Remaining Term	324.09

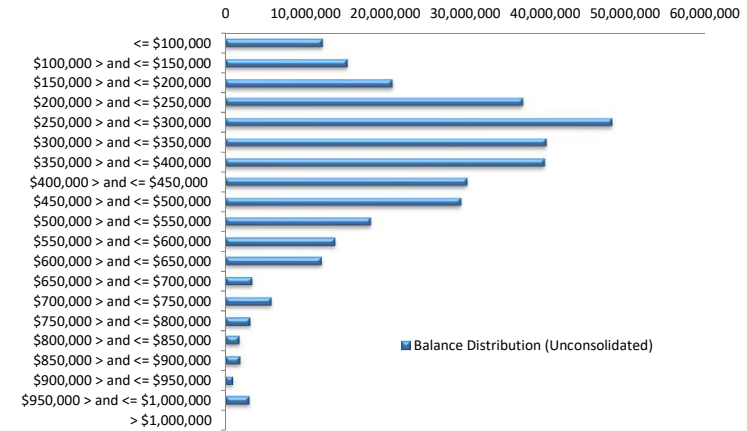
LVR Distribution

Current LTV	Balance	% Balance	Loan Count (Consol.)	% Loan Count
<= 25%	8,290,534	2.46%	82	8.38%
25% > and <= 30%	6,512,950	1.93%	29	2.97%
30% > and <= 35%	6,797,187	2.02%	30	3.07%
35% > and <= 40%	6,780,782	2.01%	32	3.27%
40% > and <= 45%	14,423,905	4.28%	52	5.32%
45% > and <= 50%	16,330,571	4.85%	53	5.42%
50% > and <= 55%	21,986,295	6.53%	58	5.93%
55% > and <= 60%	25,109,942	7.46%	69	7.06%
60% > and <= 65%	28,677,670	8.52%	67	6.85%
65% > and <= 70%	33,072,500	9.82%	86	8.79%
70% > and <= 75%	44,632,927	13.25%	114	11.66%
75% > and <= 80%	56,640,580	16.82%	140	14.31%
80% > and <= 85%	31,121,523	9.24%	76	7.77%
85% > and <= 90%	22,517,732	6.69%	56	5.73%
90% > and <= 95%	13,872,143	4.12%	34	3.48%
95% > and <= 100%	0	0.00%	0	0.00%
100% > and <= 105%	0	0.00%	0	0.00%
> 105%	0	0.00%	0	0.00%
Total	336,767,241	100.00%	978	100.00%



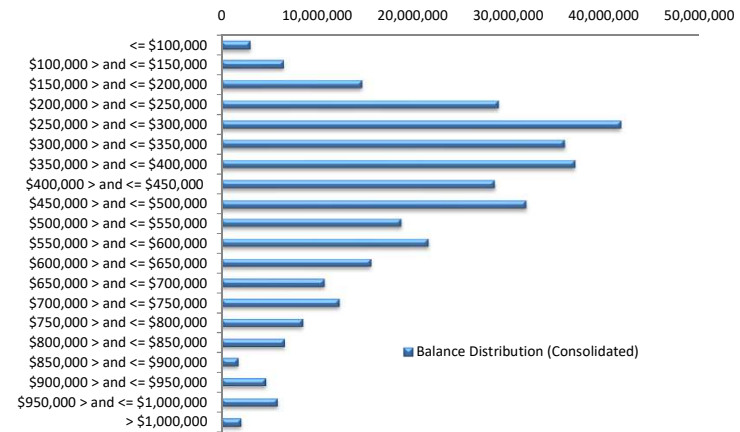
Balance Distribution (Unconsolidated)

Current Balance	Balance	% Balance	Loan Count	% Loan Count
<= \$100,000	12,108,524	3.60%	274	20.68%
\$100,000 > and <= \$150,000	15,184,362	4.51%	124	9.36%
\$150,000 > and <= \$200,000	20,837,512	6.19%	119	8.98%
\$200,000 > and <= \$250,000	37,218,716	11.05%	166	12.53%
\$250,000 > and <= \$300,000	48,328,231	14.35%	176	13.28%
\$300,000 > and <= \$350,000	40,147,811	11.92%	123	9.28%
\$350,000 > and <= \$400,000	39,949,797	11.86%	107	8.08%
\$400,000 > and <= \$450,000	30,202,308	8.97%	71	5.36%
\$450,000 > and <= \$500,000	29,446,704	8.74%	62	4.68%
\$500,000 > and <= \$550,000	18,176,350	5.40%	35	2.64%
\$550,000 > and <= \$600,000	13,722,457	4.07%	24	1.81%
\$600,000 > and <= \$650,000	11,987,459	3.56%	19	1.43%
\$650,000 > and <= \$700,000	3,352,464	1.00%	5	0.38%
\$700,000 > and <= \$750,000	5,752,398	1.71%	8	0.60%
\$750,000 > and <= \$800,000	3,104,037	0.92%	4	0.30%
\$800,000 > and <= \$850,000	1,673,834	0.50%	2	0.15%
\$850,000 > and <= \$900,000	1,776,218	0.53%	2	0.15%
\$900,000 > and <= \$950,000	914,912	0.27%	1	0.08%
\$950,000 > and <= \$1,000,000	2,883,145	0.86%	3	0.23%
> \$1,000,000	0	0.00%	0	0.00%
Total	336,767,241	100.00%	1,325	100.00%



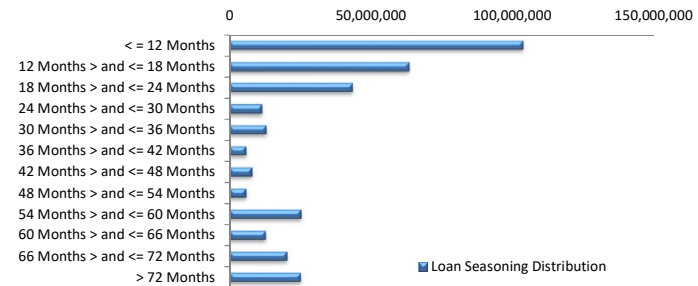
Balance Distribution (Consolidated)

Current Balance	Balance	% Balance	Loan Count	% Loan Count
<= \$100,000	2,973,160	0.88%	51	5.21%
\$100,000 > and <= \$150,000	6,541,906	1.94%	53	5.42%
\$150,000 > and <= \$200,000	14,706,488	4.37%	84	8.59%
\$200,000 > and <= \$250,000	28,988,958	8.61%	129	13.19%
\$250,000 > and <= \$300,000	41,774,469	12.40%	152	15.54%
\$300,000 > and <= \$350,000	35,884,546	10.66%	110	11.25%
\$350,000 > and <= \$400,000	36,928,924	10.97%	99	10.12%
\$400,000 > and <= \$450,000	28,577,439	8.49%	67	6.85%
\$450,000 > and <= \$500,000	31,852,252	9.46%	67	6.85%
\$500,000 > and <= \$550,000	18,814,130	5.59%	36	3.68%
\$550,000 > and <= \$600,000	21,638,425	6.43%	38	3.89%
\$600,000 > and <= \$650,000	15,653,064	4.65%	25	2.56%
\$650,000 > and <= \$700,000	10,772,488	3.20%	16	1.64%
\$700,000 > and <= \$750,000	12,326,252	3.66%	17	1.74%
\$750,000 > and <= \$800,000	8,504,490	2.53%	11	1.12%
\$800,000 > and <= \$850,000	6,617,248	1.96%	8	0.82%
\$850,000 > and <= \$900,000	1,739,201	0.52%	2	0.20%
\$900,000 > and <= \$950,000	4,607,587	1.37%	5	0.51%
\$950,000 > and <= \$1,000,000	5,815,038	1.73%	6	0.61%
> \$1,000,000	2,051,175	0.61%	2	0.20%
Total	336,767,241	100.00%	978	100.00%



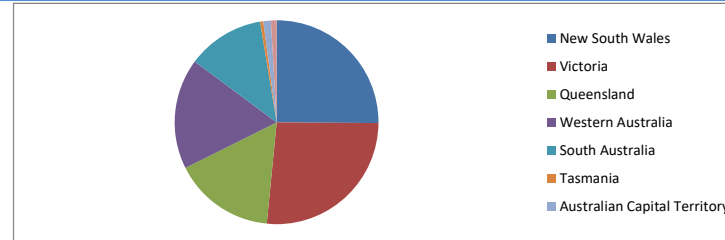
Loan Seasoning Distribution

Seasoning (Months)	Balance	% Balance	Loan Count	% Loan Count
<= 12 Months	103,852,883	30.84%	363	27.40%
12 Months > and <= 18 Months	63,417,054	18.83%	226	17.06%
18 Months > and <= 24 Months	43,425,461	12.89%	154	11.62%
24 Months > and <= 30 Months	11,394,720	3.38%	52	3.92%
30 Months > and <= 36 Months	12,838,286	3.81%	53	4.00%
36 Months > and <= 42 Months	5,693,578	1.69%	24	1.81%
42 Months > and <= 48 Months	7,788,996	2.31%	30	2.26%
48 Months > and <= 54 Months	5,699,957	1.69%	22	1.66%
54 Months > and <= 60 Months	25,084,055	7.45%	102	7.70%
60 Months > and <= 66 Months	12,589,414	3.74%	68	5.13%
66 Months > and <= 72 Months	20,069,785	5.96%	99	7.47%
> 72 Months	24,913,051	7.40%	132	9.96%
Total	336,767,241	100.00%	1,325	100.00%



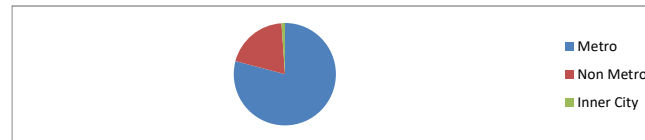
Geographic Distribution

Jurisdiction State	Balance	% Balance	Loan Count (Consol.)	% Loan Count
New South Wales	84,665,943	25.14%	227	23.21%
Victoria	88,899,295	26.40%	255	26.07%
Queensland	54,072,421	16.06%	165	16.87%
Western Australia	59,221,123	17.59%	160	16.36%
South Australia	41,181,195	12.23%	147	15.03%
Tasmania	1,618,231	0.48%	5	0.51%
Australian Capital Territory	4,081,809	1.21%	11	1.12%
Northern Territory	3,027,224	0.90%	8	0.82%
No Data	0	0.00%	0	0.00%
Total	336,767,241	100.00%	978	100.00%



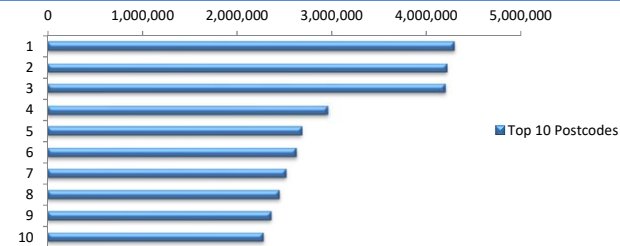
Locality

S&P Category	Balance	% Balance	Loan Count (Consol.)	% Loan Count
Metro	266,571,940	79.16%	761	77.81%
Non Metro	66,647,954	19.79%	204	20.86%
Inner City	3,547,347	1.05%	13	1.33%
No Data	0	0.00%	0	0.00%
Total	336,767,241	100.00%	978	100.00%



Top 10 Postcodes

Postcode	Balance	% Balance	Loan Count (Consol.)	% Loan Count
3977	4,296,502	1.28%	10	0.75%
2261	4,219,127	1.25%	8	0.60%
3030	4,194,095	1.25%	11	0.83%
6164	2,961,287	0.88%	8	0.60%
4165	2,677,185	0.79%	6	0.45%
6112	2,628,220	0.78%	7	0.53%
6030	2,513,819	0.75%	5	0.38%
6069	2,454,205	0.73%	6	0.45%
6018	2,358,642	0.70%	4	0.30%
6155	2,276,635	0.68%	4	0.30%
Total	30,579,716	9.08%	69	5.21%



Documentation

Document Type	Balance	% Balance	Loan Count	% Loan Count
Full Doc	336,767,241	100.00%	1,325	100.00%
Low Doc	0	0.00%	0	0.00%
No Doc	0	0.00%	0	0.00%
Total	336,767,241	100.00%	1,325	100.00%



Rate Type

Rate Type	Balance	% Balance	Loan Count	% Loan Count
Variable Rate	336,767,241	100.00%	1,325	100.00%
Fixed Rate	0	0.00%	0	0.00%
Total	336,767,241	100.00%	1,325	100.00%



Repayment Type

Repayment Type	Balance	% Balance	Loan Count	% Loan Count
Principal & Interest	261,402,056	77.62%	1,036	78.19%
Interest Only	75,126,219	22.31%	281	21.21%
Non-Billing	238,965	0.07%	8	0.60%
Total	336,767,241	100.00%	1,325	100.00%



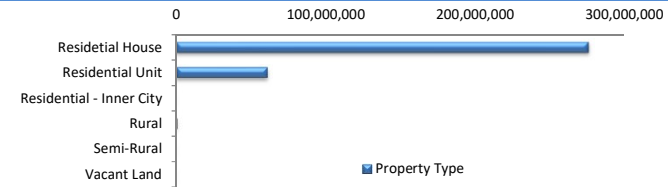
Loan Type

Product Category	Balance	% Balance	Loan Count	% Loan Count
Line of Credit	238,965	0.07%	8	0.60%
Term Loan	336,528,275	99.93%	1,317	99.40%
Total	336,767,241	100.00%	1,325	100.00%



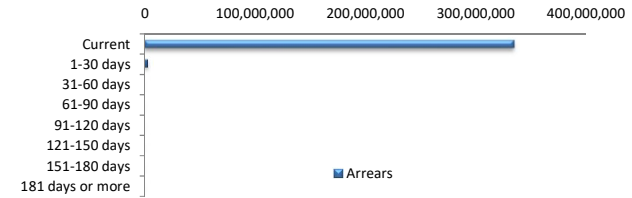
Property Type

Property Type	Balance	% Balance	Loan Count (Consol.)	% Loan Count
Residential House	275,857,038	81.91%	782	79.96%
Residential Unit	60,461,707	17.95%	195	19.94%
Residential - Inner City	0	0.00%	0	0.00%
Rural	448,495	0.13%	1	0.10%
Semi-Rural	0	0.00%	0	0.00%
Vacant Land	0	0.00%	0	0.00%
No Data	0	0.00%	0	0.00%
Total	336,767,241	100.00%	978	100.00%



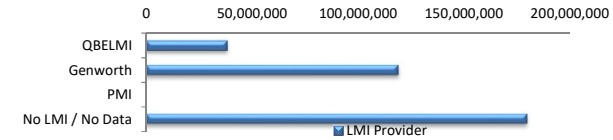
Arrears

Arrears Band	Balance	% Balance	Loan Count	% Loan Count
Current	334,156,328	99.22%	1,318	99.47%
1-30 days	2,610,913	0.78%	7	0.53%
31-60 days	0	0.00%	0	0.00%
61-90 days	0	0.00%	0	0.00%
91-120 days	0	0.00%	0	0.00%
121-150 days	0	0.00%	0	0.00%
151-180 days	0	0.00%	0	0.00%
181 days or more	0	0.00%	0	0.00%
Total	336,767,241	100.00%	1,325	100.00%



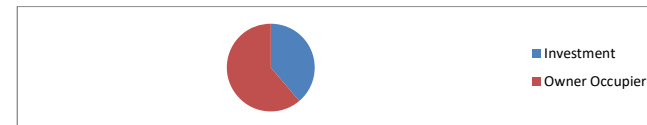
LMI Provider

LMI Provider	Balance	% Balance	Loan Count (Consol.)	% Loan Count
QBELMI	38,081,094	11.31%	110	11.25%
Genworth	119,129,484	35.37%	410	41.92%
PMI	0	0.00%	0	0.00%
No LMI / No Data	179,556,663	53.32%	458	46.83%
Total	336,767,241	100.00%	978	100.00%



Property Occupancy

Property Occupancy	Balance	% Balance	Loan Count	% Loan Count
Investment	130,397,305	38.72%	479	36.15%
Owner Occupier	206,369,935	61.28%	846	63.85%
Total	336,767,241	100.00%	1,325	100.00%



Default Statistics

Default Data	Amount	No. of Loans
Defaulted Loans	0.00	0.00
Loss on Sale	0.00	0.00
Claims on LMI	0.00	0.00
Claims paid by LMI	0.00	0.00
Claims Denied/Reduced	0.00	0.00
Loss covered by Excess Spread	0.00	N/A