

**AFG Series 2017-1
Collateral Report**



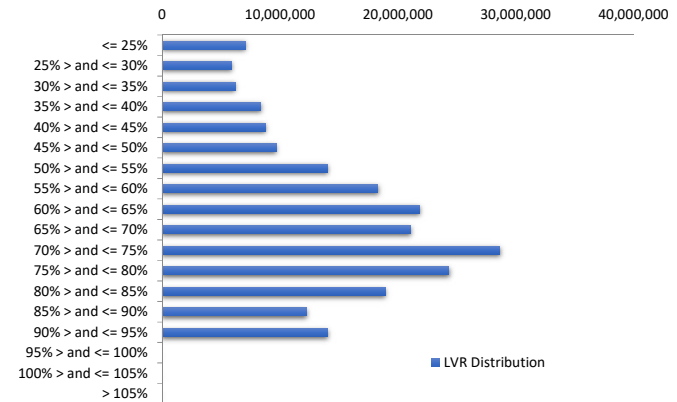
Model Period	22
Collection Period Start	1-Jun-19
Collection Period End	30-Jun-19
No. of Days	30
Interest Period Start	11-Jun-19
Interest Period End	9-Jul-19
No. of Days	29
Determination Date	5-Jul-19
Payment Date	10-Jul-19

Pool Statistics

Closing Balance of Mortgages	219,520,033
No. of Loans (Unconsolidated)	954
No. of Loans (Consolidated)	701
Average Loan Size (Unconsolidated)	230,105
Average Loan Size (Consolidated)	313,153
Largest Loan Size (Unconsolidated)	959,484
Largest Loan Size (Consolidated)	1,417,312
Smallest Loan Size (Unconsolidated)	(5,326)
Smallest Loan Size (Consolidated)	(4,689)
Weighted Average Interest Rate	4.24%
Weighted Average LVR	64.23%
Weighted Average Seasoning	42.50
Weighted Average Remaining Term	311.44

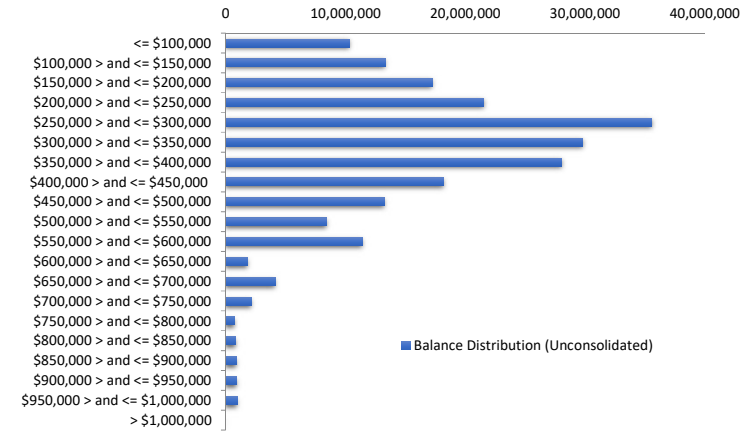
LVR Distribution

Current LTV	Balance	% Balance	Loan Count (Consol.)	% Loan Count
<= 25%	7,064,302	3.22%	75	10.70%
25% > and <= 30%	5,913,247	2.69%	32	4.56%
30% > and <= 35%	6,194,358	2.82%	34	4.85%
35% > and <= 40%	8,396,220	3.82%	32	4.56%
40% > and <= 45%	8,769,317	3.99%	36	5.14%
45% > and <= 50%	9,671,821	4.41%	29	4.14%
50% > and <= 55%	14,053,016	6.40%	40	5.71%
55% > and <= 60%	18,311,695	8.34%	54	7.70%
60% > and <= 65%	21,833,741	9.95%	51	7.28%
65% > and <= 70%	21,089,262	9.61%	55	7.85%
70% > and <= 75%	28,612,133	13.03%	84	11.98%
75% > and <= 80%	24,350,890	11.09%	60	8.56%
80% > and <= 85%	18,932,394	8.62%	48	6.85%
85% > and <= 90%	12,266,186	5.59%	30	4.28%
90% > and <= 95%	14,061,452	6.41%	41	5.85%
95% > and <= 100%	0	0.00%	0	0.00%
100% > and <= 105%	0	0.00%	0	0.00%
> 105%	0	0.00%	0	0.00%
Total	219,520,033	100.00%	701	100.00%



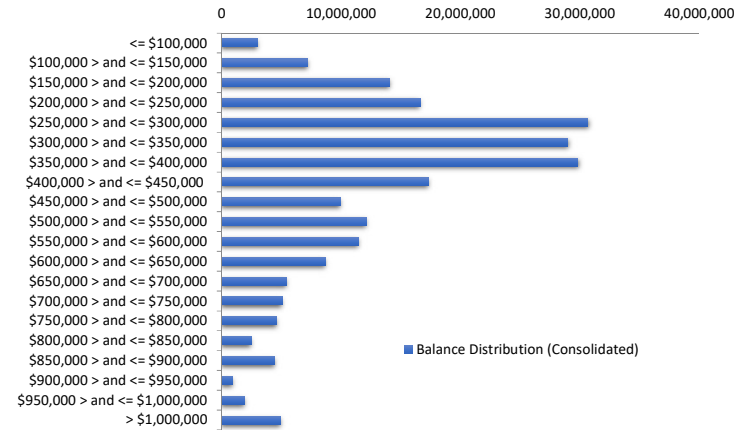
Balance Distribution (Unconsolidated)

Current Balance	Balance	% Balance	Loan Count	% Loan Count
<= \$100,000	10,317,708	4.70%	237	24.84%
\$100,000 > and <= \$150,000	13,309,326	6.06%	105	11.01%
\$150,000 > and <= \$200,000	17,229,951	7.85%	98	10.27%
\$200,000 > and <= \$250,000	21,547,485	9.82%	95	9.96%
\$250,000 > and <= \$300,000	35,581,029	16.21%	129	13.52%
\$300,000 > and <= \$350,000	29,808,191	13.58%	91	9.54%
\$350,000 > and <= \$400,000	28,023,150	12.77%	75	7.86%
\$400,000 > and <= \$450,000	18,176,129	8.28%	43	4.51%
\$450,000 > and <= \$500,000	13,216,290	6.02%	28	2.94%
\$500,000 > and <= \$550,000	8,413,585	3.83%	16	1.68%
\$550,000 > and <= \$600,000	11,417,968	5.20%	20	2.10%
\$600,000 > and <= \$650,000	1,827,157	0.83%	3	0.31%
\$650,000 > and <= \$700,000	4,125,420	1.88%	6	0.63%
\$700,000 > and <= \$750,000	2,151,007	0.98%	3	0.31%
\$750,000 > and <= \$800,000	751,830	0.34%	1	0.10%
\$800,000 > and <= \$850,000	842,560	0.38%	1	0.10%
\$850,000 > and <= \$900,000	897,692	0.41%	1	0.10%
\$900,000 > and <= \$950,000	924,072	0.42%	1	0.10%
\$950,000 > and <= \$1,000,000	959,484	0.44%	1	0.10%
> \$1,000,000	0	0.00%	0	0.00%
Total	219,520,033	100.00%	954	100.00%



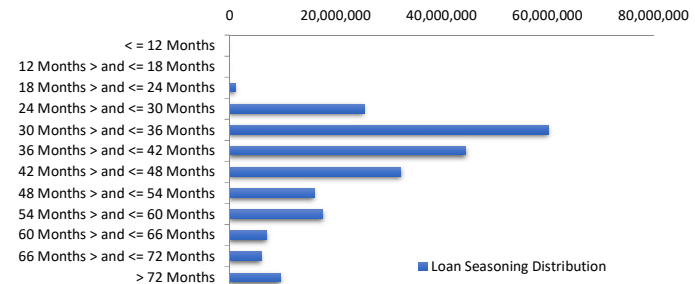
Balance Distribution (Consolidated)

Current Balance	Balance	% Balance	Loan Count	% Loan Count
<= \$100,000	3,000,380	1.37%	56	7.99%
\$100,000 > and <= \$150,000	7,195,102	3.28%	57	8.13%
\$150,000 > and <= \$200,000	14,038,278	6.39%	79	11.27%
\$200,000 > and <= \$250,000	16,608,811	7.57%	73	10.41%
\$250,000 > and <= \$300,000	30,662,585	13.97%	112	15.98%
\$300,000 > and <= \$350,000	28,991,638	13.21%	89	12.70%
\$350,000 > and <= \$400,000	29,834,350	13.59%	80	11.41%
\$400,000 > and <= \$450,000	17,322,343	7.89%	41	5.85%
\$450,000 > and <= \$500,000	9,928,643	4.52%	21	3.00%
\$500,000 > and <= \$550,000	12,080,458	5.50%	23	3.28%
\$550,000 > and <= \$600,000	11,426,740	5.21%	20	2.85%
\$600,000 > and <= \$650,000	8,668,897	3.95%	14	2.00%
\$650,000 > and <= \$700,000	5,412,197	2.47%	8	1.14%
\$700,000 > and <= \$750,000	5,047,094	2.30%	7	1.00%
\$750,000 > and <= \$800,000	4,609,059	2.10%	6	0.86%
\$800,000 > and <= \$850,000	2,469,098	1.12%	3	0.43%
\$850,000 > and <= \$900,000	4,441,577	2.02%	5	0.71%
\$900,000 > and <= \$950,000	924,072	0.42%	1	0.14%
\$950,000 > and <= \$1,000,000	1,925,273	0.88%	2	0.29%
> \$1,000,000	4,933,437	2.25%	4	0.57%
Total	219,520,033	100.00%	701	100.00%



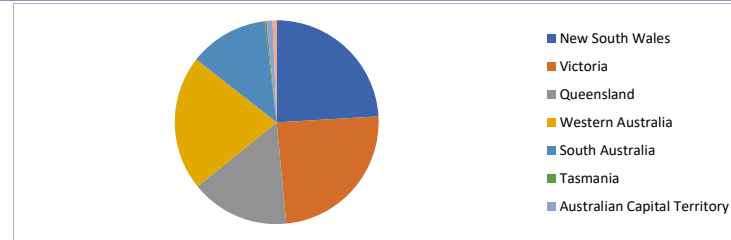
Loan Seasoning Distribution

Seasoning (Months)	Balance	% Balance	Loan Count	% Loan Count
<= 12 Months	0	0.00%	0	0.00%
12 Months > and <= 18 Months	0	0.00%	0	0.00%
18 Months > and <= 24 Months	1,027,416	0.47%	5	0.52%
24 Months > and <= 30 Months	25,374,510	11.56%	95	9.96%
30 Months > and <= 36 Months	60,093,382	27.37%	229	24.00%
36 Months > and <= 42 Months	44,612,724	20.32%	188	19.71%
42 Months > and <= 48 Months	32,331,089	14.73%	141	14.78%
48 Months > and <= 54 Months	15,932,463	7.26%	84	8.81%
54 Months > and <= 60 Months	17,619,706	8.03%	80	8.39%
60 Months > and <= 66 Months	7,027,834	3.20%	41	4.30%
66 Months > and <= 72 Months	5,921,702	2.70%	36	3.77%
> 72 Months	9,579,207	4.36%	55	5.77%
Total	219,520,033	100.00%	954	100.00%



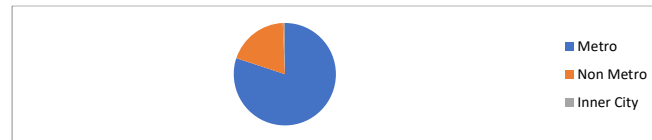
Geographic Distribution

Jurisdiction State	Balance	% Balance	Loan Count (Consol.)	% Loan Count
New South Wales	52,859,302	24.08%	157	22.40%
Victoria	53,604,067	24.42%	163	23.25%
Queensland	34,340,526	15.64%	115	16.41%
Western Australia	47,033,997	21.43%	144	20.54%
South Australia	27,538,590	12.54%	106	15.12%
Tasmania	602,778	0.27%	4	0.57%
Australian Capital Territory	2,096,889	0.96%	8	1.14%
Northern Territory	1,443,883	0.66%	4	0.57%
No Data	0	0.00%	0	0.00%
Total	219,520,033	100.00%	701	100.00%



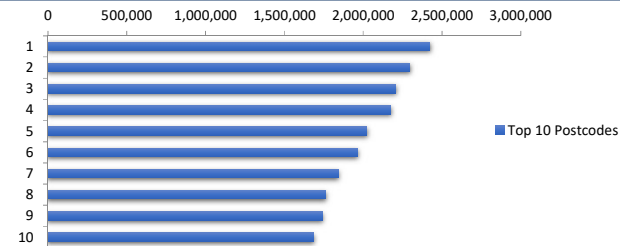
Locality

S&P Category	Balance	% Balance	Loan Count (Consol.)	% Loan Count
Metro	175,769,207	80.07%	544	77.60%
Non Metro	42,355,585	19.29%	151	21.54%
Inner City	1,395,241	0.64%	6	0.86%
No Data	0	0.00%	0	0.00%
Total	219,520,033	100.00%	701	100.00%



Top 10 Postcodes

Postcode	Balance	% Balance	Loan Count (Consol.)	% Loan Count
5095	2,422,273	1.10%	6	0.63%
4030	2,296,686	1.05%	6	0.63%
3029	2,204,257	1.00%	4	0.42%
3199	2,177,102	0.99%	4	0.42%
6164	2,022,474	0.92%	7	0.73%
4209	1,962,229	0.89%	5	0.52%
4814	1,844,113	0.84%	5	0.52%
4300	1,761,700	0.80%	5	0.52%
6055	1,742,645	0.79%	4	0.42%
6170	1,687,552	0.77%	4	0.42%
Total	20,121,031	9.17%	50	5.24%



Documentation

Document Type	Balance	% Balance	Loan Count	% Loan Count
Full Doc	219,520,033	100.00%	954	100.00%
Low Doc	0	0.00%	0	0.00%
No Doc	0	0.00%	0	0.00%
Total	219,520,033	100.00%	954	100.00%



Rate Type

Rate Type	Balance	% Balance	Loan Count	% Loan Count
Variable Rate	219,520,033	100.00%	954	100.00%
Fixed Rate	0	0.00%	0	0.00%
Total	219,520,033	100.00%	954	100.00%



Repayment Type

Repayment Type	Balance	% Balance	Loan Count	% Loan Count
Principal & Interest	166,118,302	75.67%	745	78.09%
Interest Only	53,401,731	24.33%	209	21.91%
Non-Billing	0	0.00%	0	0.00%
Total	219,520,033	100.00%	954	100.00%



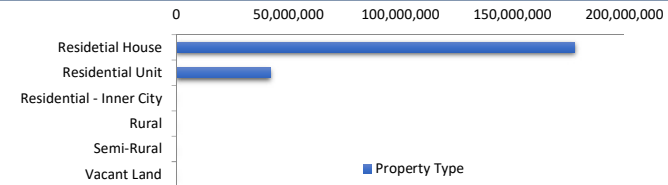
Loan Type

Product Category	Balance	% Balance	Loan Count	% Loan Count
Line of Credit	0	0.00%	0	0.00%
Term Loan	219,520,033	100.00%	954	100.00%
Total	219,520,033	100.00%	954	100.00%



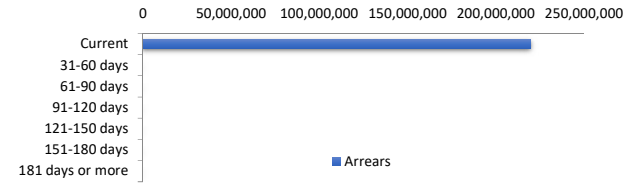
Property Type

Property Type	Balance	% Balance	Loan Count (Consol.)	% Loan Count
Residential House	177,592,833	80.90%	551	78.60%
Residential Unit	41,927,200	19.10%	150	21.40%
Residential - Inner City	0	0.00%	0	0.00%
Rural	0	0.00%	0	0.00%
Semi-Rural	0	0.00%	0	0.00%
Vacant Land	0	0.00%	0	0.00%
No Data	0	0.00%	0	0.00%
Total	219,520,033	100.00%	701	100.00%



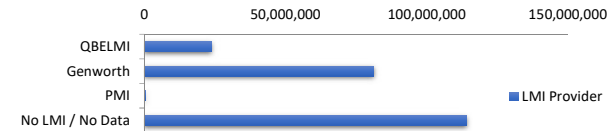
Arrears

Arrears Band	Balance	% Balance	Loan Count	% Loan Count
Current	219,520,033	100.00%	954	100.00%
31-60 days	0	0.00%	0	0.00%
61-90 days	0	0.00%	0	0.00%
91-120 days	0	0.00%	0	0.00%
121-150 days	0	0.00%	0	0.00%
151-180 days	0	0.00%	0	0.00%
181 days or more	0	0.00%	0	0.00%
Total	219,520,033	100.00%	954	100.00%



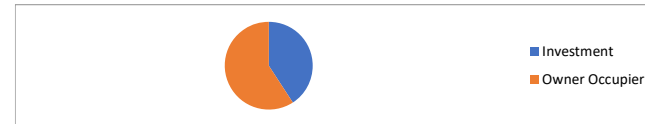
LMI Provider

LMI Provider	Balance	% Balance	Loan Count (Consol.)	% Loan Count
QBELMI	23,777,056	10.83%	75	10.70%
Genworth	81,340,928	37.05%	275	39.23%
PMI	295,463	0.13%	1	0.14%
No LMI / No Data	114,106,586	51.98%	350	49.93%
Total	219,520,033	100.00%	701	100.00%



Property Occupancy

Property Occupancy	Balance	% Balance	Loan Count	% Loan Count
Investment	89,620,593	40.83%	346	36.27%
Owner Occupier	129,899,440	59.17%	608	63.73%
Total	219,520,033	100.00%	954	100.00%



Default Statistics

Default Data	Amount	No. of Loans
Defaulted Loans	0.00	0.00
Loss on Sale	0.00	0.00
Claims on LMI	0.00	0.00
Claims paid by LMI	0.00	0.00
Claims Denied/Reduced	0.00	0.00
Loss covered by Excess Spread	0.00	N/A