

AFG Series 2013-2
Collateral Report



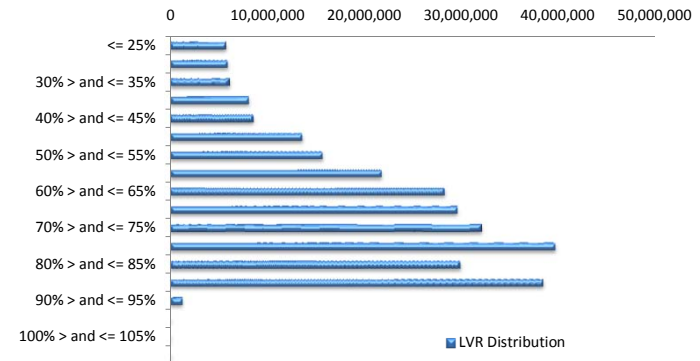
Model Period	2
Collection Period Start	01-Dec-13
Collection Period End	31-Dec-13
No. of Days	31
Interest Period Start	16-Dec-13
Interest Period End	13-Jan-14
No. of Days	29
Determination Date	09-Jan-14
Payment Date	14-Jan-14

Pool Statistics

Closing Balance of Mortgages	284,447,439
Number of Loans	1,079
Average Loan Size	263,621
Largest Loan Size	1,087,778
Smallest Loan Size	(5,587)
Weighted Average Interest Rate	4.91%
Weighted Average LVR	66.73%
Weighted Average Seasoning	13.33

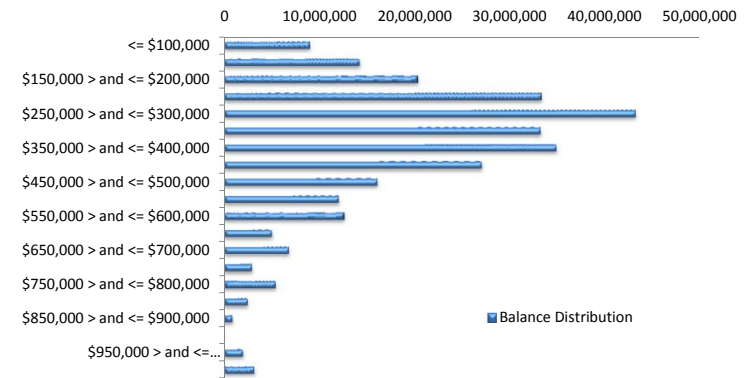
LVR Distribution

Current LTV	Balance	% Balance	Loan Count	% Loan Count
<= 25%	5,738,037	2.02%	62	5.75%
25% > and <= 30%	5,911,713	2.08%	34	3.15%
30% > and <= 35%	6,141,942	2.16%	39	3.61%
35% > and <= 40%	8,092,040	2.84%	46	4.26%
40% > and <= 45%	8,587,370	3.02%	43	3.99%
45% > and <= 50%	13,595,010	4.78%	57	5.28%
50% > and <= 55%	15,662,816	5.51%	61	5.65%
55% > and <= 60%	21,745,088	7.64%	84	7.78%
60% > and <= 65%	28,227,657	9.92%	100	9.27%
65% > and <= 70%	29,546,623	10.39%	106	9.82%
70% > and <= 75%	32,066,631	11.27%	97	8.99%
75% > and <= 80%	39,628,719	13.93%	127	11.77%
80% > and <= 85%	29,865,820	10.50%	91	8.43%
85% > and <= 90%	38,358,835	13.49%	128	11.86%
90% > and <= 95%	1,279,139	0.45%	4	0.37%
95% > and <= 100%	0	0.00%	0	0.00%
100% > and <= 105%	0	0.00%	0	0.00%
> 105%	0	0.00%	0	0.00%
Total	284,447,439	100.00%	1,079	100.00%



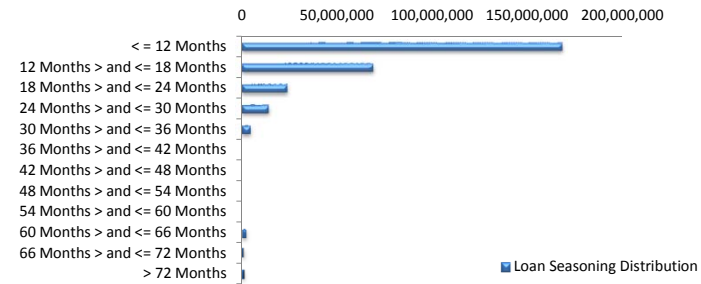
Balance Distribution

Current Balance	Balance	% Balance	Loan Count	% Loan Count
<= \$100,000	9,010,655	3.17%	166	15.38%
\$100,000 > and <= \$150,000	14,220,034	5.00%	113	10.47%
\$150,000 > and <= \$200,000	20,361,750	7.16%	117	10.84%
\$200,000 > and <= \$250,000	33,280,981	11.70%	148	13.72%
\$250,000 > and <= \$300,000	43,158,565	15.17%	158	14.64%
\$300,000 > and <= \$350,000	33,197,811	11.67%	103	9.55%
\$350,000 > and <= \$400,000	34,854,023	12.25%	93	8.62%
\$400,000 > and <= \$450,000	27,015,398	9.50%	64	5.93%
\$450,000 > and <= \$500,000	16,061,022	5.65%	34	3.15%
\$500,000 > and <= \$550,000	12,030,070	4.23%	23	2.13%
\$550,000 > and <= \$600,000	12,618,408	4.44%	22	2.04%
\$600,000 > and <= \$650,000	5,011,093	1.76%	8	0.74%
\$650,000 > and <= \$700,000	6,807,563	2.39%	10	0.93%
\$700,000 > and <= \$750,000	2,923,172	1.03%	4	0.37%
\$750,000 > and <= \$800,000	5,412,446	1.90%	7	0.65%
\$800,000 > and <= \$850,000	2,483,420	0.87%	3	0.28%
\$850,000 > and <= \$900,000	861,494	0.30%	1	0.09%
\$900,000 > and <= \$950,000	0	0.00%	0	0.00%
\$950,000 > and <= \$1,000,000	1,985,205	0.70%	2	0.19%
> \$1,000,000	3,154,330	1.11%	3	0.28%
Total	284,447,439	100.00%	1,079	100.00%



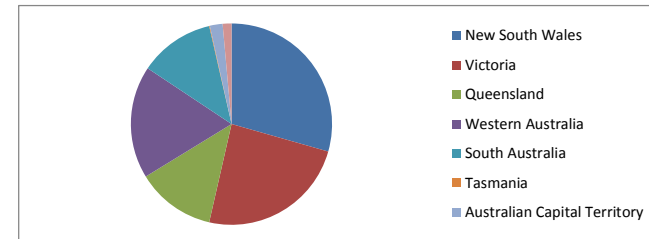
Loan Seasoning Distribution

Seasoning (Months)	Balance	% Balance	Loan Count	% Loan Count
<= 12 Months	167,894,635	59.02%	643	59.81%
12 Months > and <= 18 Months	68,981,103	24.25%	241	22.42%
18 Months > and <= 24 Months	24,049,901	8.45%	98	9.12%
24 Months > and <= 30 Months	14,289,909	5.02%	66	6.14%
30 Months > and <= 36 Months	4,809,504	1.69%	16	1.49%
36 Months > and <= 42 Months	0	0.00%	0	0.00%
42 Months > and <= 48 Months	0	0.00%	0	0.00%
48 Months > and <= 54 Months	0	0.00%	0	0.00%
54 Months > and <= 60 Months	0	0.00%	0	0.00%
60 Months > and <= 66 Months	2,135,105	0.75%	6	0.56%
66 Months > and <= 72 Months	944,087	0.33%	5	0.47%
> 72 Months	1,343,196	0.47%	0	0.00%
Total	284,447,439	100.00%	1,075	100.00%



Geographic Distribution

Jurisdiction State	Balance	% Balance	Loan Count	% Loan Count
New South Wales	83,653,018	29.41%	292	27.06%
Victoria	68,621,030	24.12%	279	25.86%
Queensland	36,175,549	12.72%	130	12.05%
Western Australia	51,525,654	18.11%	170	15.76%
South Australia	34,349,745	12.08%	176	16.31%
Tasmania	285,517	0.10%	2	0.19%
Australian Capital Territory	5,923,003	2.08%	17	1.58%
Northern Territory	3,913,923	1.38%	13	1.20%
No Data	0	0.00%	0	0.00%
Total	284,447,439	100.00%	1,079	100.00%



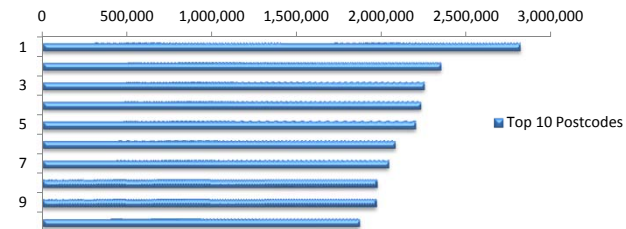
Locality

S&P Category	Balance	% Balance	Loan Count	% Loan Count
Metro	231,205,679	81.28%	860	79.70%
Non Metro	47,619,653	16.74%	205	19.00%
Inner City	5,622,108	1.98%	14	1.30%
Total	284,447,439	100.00%	1,079	100.00%



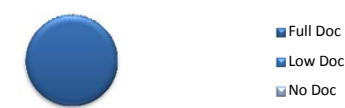
Top 10 Postcodes

Postcode	Balance	% Balance	Loan Count	% Loan Count
6065	2,817,751	0.99%	7	0.65%
2560	2,350,724	0.83%	8	0.74%
2515	2,252,273	0.79%	7	0.65%
3121	2,232,113	0.78%	5	0.46%
6030	2,201,324	0.77%	6	0.56%
3216	2,081,104	0.73%	7	0.65%
6155	2,042,235	0.72%	5	0.46%
2913	1,975,057	0.69%	7	0.65%
2170	1,970,272	0.69%	7	0.65%
6164	1,870,356	0.66%	6	0.56%
Total	21,793,210	7.66%	65	6.02%



Documentation

Document Type	Balance	% Balance	Loan Count	% Loan Count
Full Doc	284,447,439	100.00%	1,079	100.00%
Low Doc	0	0.00%	0	0.00%
No Doc	0	0.00%	0	0.00%
Total	284,447,439	100.00%	1,079	100.00%



Rate Type

Rate Type	Balance	% Balance	Loan Count	% Loan Count
Variable Rate	284,447,439	100.00%	1,079	100.00%
Fixed Rate	0	0.00%	0	0.00%
Total	284,447,439	100.00%	1,079	100.00%



Repayment Type

Repayment Type	Balance	% Balance	Loan Count	% Loan Count
Principal & Interest	226,789,666	79.73%	849	78.68%
Interest Only	56,542,652	19.88%	210	19.46%
Non-Billing	1,115,121	0.39%	20	1.85%
Total	284,447,439	100.00%	1,079	100.00%



Loan Type

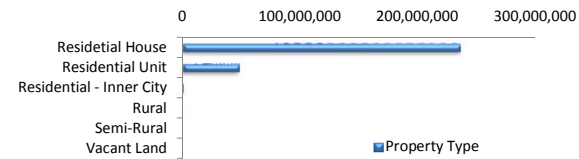
Product Category	Balance	% Balance	Loan Count	% Loan Count
Line of Credit	1,115,121	0.39%	20	1.85%
Term Loan	283,332,318	99.61%	1,059	98.15%
Total	284,447,439	100.00%	1,079	100.00%



■ Line of Credit
■ Term Loan

Property Type

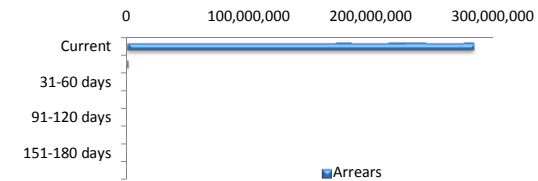
Property Type	Balance	% Balance	Loan Count	% Loan Count
Residential House	235,257,352	82.71%	878	81.37%
Residential Unit	48,047,438	16.89%	197	18.26%
Residential - Inner City	844,402	0.30%	2	0.19%
Rural	298,247	0.10%	2	0.19%
Semi-Rural	0	0.00%	0	0.00%
Vacant Land	0	0.00%	0	0.00%
Total	284,447,439	100.00%	1,079	100.00%



■ Property Type

Arrears

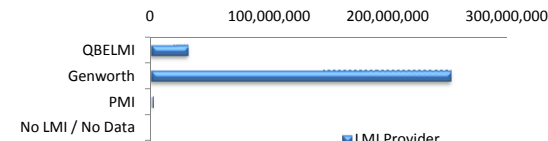
Arrears Band	Balance	% Balance	Loan Count	% Loan Count
Current	283,654,867	99.72%	1,076	99.72%
1-30 days	792,572	0.28%	3	0.28%
31-60 days	0	0.00%	0	0.00%
61-90 days	0	0.00%	0	0.00%
91-120 days	0	0.00%	0	0.00%
121-150 days	0	0.00%	0	0.00%
151-180 days	0	0.00%	0	0.00%
181 days or more	0	0.00%	0	0.00%
Total	284,447,439	100.00%	1,079	100.00%



■ Arrears

LMI Provider

LMI Provider	Balance	% Balance	Loan Count	% Loan Count
QBELMI	31,280,349	11.00%	117	10.84%
Genworth	251,818,853	88.53%	958	88.79%
PMI	1,348,237	0.47%	4	0.37%
No LMI / No Data	0	0.00%	0	0.00%
Total	284,447,439	100.00%	1,079	100.00%



■ LMI Provider

Property Occupancy

Property Occupancy	Balance	% Balance	Loan Count	% Loan Count
Investment	64,434,426	22.65%	226	20.95%
Owner Occupier	220,013,013	77.35%	853	79.05%
Total	284,447,439	100.00%	1,079	100.00%



■ Investment
■ Owner Occupier

Default Statistics

Default Data	Amount	No. of Loans
Defaulted Loans	0.00	0.00
Loss on Sale	0.00	0.00
Claims on LMI	0.00	0.00
Claims paid by LMI	0.00	0.00
Claims Denied/Reduced	0.00	0.00
Loss covered by Excess Spread	0.00	N/A