

AFG 2013-1 Trust
Collateral Report



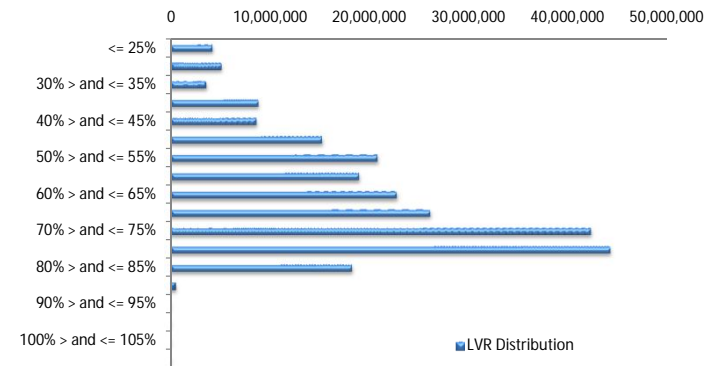
Model Period	7
Collection Period Start	01-Sep-13
Collection Period End	30-Sep-13
No. of Days	30
Interest Period Start	10-Sep-13
Interest Period End	09-Oct-13
No. of Days	30
Determination Date	04-Oct-13
Payment Date	10-Oct-13

Pool Statistics

Closing Balance of Mortgages	240,146,382
Number of Loans	1,059
Average Loan Size	226,767
Largest Loan Size	793,148
Smallest Loan Size	0
Weighted Average Interest Rate	4.94%
Weighted Average LVR	63.21%
Weighted Average Seasoning	14.31

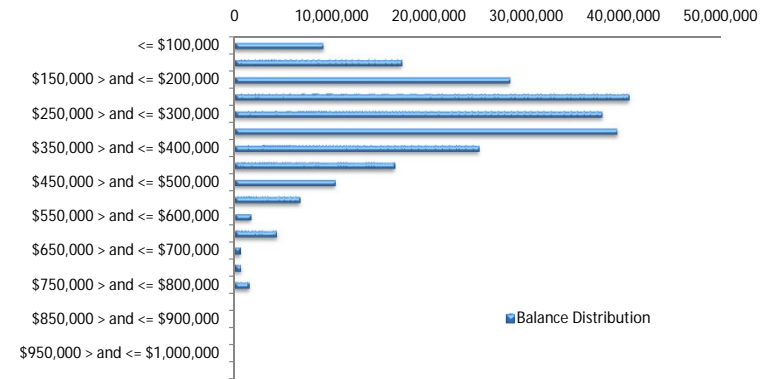
LVR Distribution

Current LTV	Balance	% Balance	Loan Count	% Loan Count
<= 25%	4,254,881	1.77%	46	4.34%
25% > and <= 30%	5,173,837	2.15%	35	3.31%
30% > and <= 35%	3,637,096	1.51%	22	2.08%
35% > and <= 40%	8,883,548	3.70%	54	5.10%
40% > and <= 45%	8,683,120	3.62%	43	4.06%
45% > and <= 50%	15,282,511	6.36%	77	7.27%
50% > and <= 55%	20,846,651	8.68%	84	7.93%
55% > and <= 60%	18,989,297	7.91%	86	8.12%
60% > and <= 65%	22,778,917	9.49%	102	9.63%
65% > and <= 70%	26,154,774	10.89%	112	10.58%
70% > and <= 75%	42,321,167	17.62%	170	16.05%
75% > and <= 80%	44,263,216	18.43%	164	15.49%
80% > and <= 85%	18,289,458	7.62%	62	5.85%
85% > and <= 90%	587,908	0.24%	2	0.19%
90% > and <= 95%	0	0.00%	0	0.00%
95% > and <= 100%	0	0.00%	0	0.00%
100% > and <= 105%	0	0.00%	0	0.00%
> 105%	0	0.00%	0	0.00%
Total	240,146,382	100.00%	1,059	100.00%



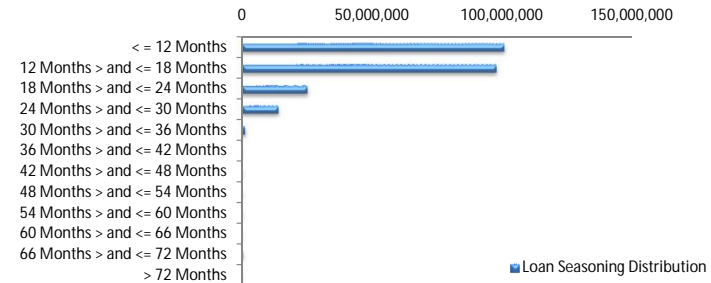
Balance Distribution

Current Balance	Balance	% Balance	Loan Count	% Loan Count
<= \$100,000	9,163,613	3.82%	171	16.15%
\$100,000 > and <= \$150,000	17,218,296	7.17%	135	12.75%
\$150,000 > and <= \$200,000	28,289,188	11.78%	161	15.20%
\$200,000 > and <= \$250,000	40,515,519	16.87%	179	16.90%
\$250,000 > and <= \$300,000	37,767,610	15.73%	137	12.94%
\$300,000 > and <= \$350,000	39,301,608	16.37%	121	11.43%
\$350,000 > and <= \$400,000	25,119,230	10.46%	67	6.33%
\$400,000 > and <= \$450,000	16,496,111	6.87%	39	3.68%
\$450,000 > and <= \$500,000	10,407,515	4.33%	22	2.08%
\$500,000 > and <= \$550,000	6,770,798	2.82%	13	1.23%
\$550,000 > and <= \$600,000	1,734,353	0.72%	3	0.28%
\$600,000 > and <= \$650,000	4,398,264	1.83%	7	0.66%
\$650,000 > and <= \$700,000	666,749	0.28%	1	0.09%
\$700,000 > and <= \$750,000	729,183	0.30%	1	0.09%
\$750,000 > and <= \$800,000	1,568,344	0.65%	2	0.19%
\$800,000 > and <= \$850,000	0	0.00%	0	0.00%
\$850,000 > and <= \$900,000	0	0.00%	0	0.00%
\$900,000 > and <= \$950,000	0	0.00%	0	0.00%
\$950,000 > and <= \$1,000,000	0	0.00%	0	0.00%
> \$1,000,000	0	0.00%	0	0.00%
Total	240,146,382	100.00%	1,059	100.00%



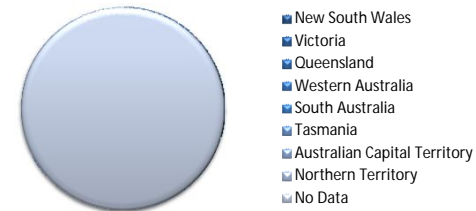
Loan Seasoning Distribution

Seasoning (Months)	Balance	% Balance	Loan Count	% Loan Count
<= 12 Months	100,763,115	41.96%	434	40.98%
12 Months > and <= 18 Months	97,879,063	40.76%	423	39.94%
18 Months > and <= 24 Months	25,438,650	10.59%	134	12.65%
24 Months > and <= 30 Months	14,039,329	5.85%	63	5.95%
30 Months > and <= 36 Months	1,416,816	0.59%	3	0.28%
36 Months > and <= 42 Months	0	0.00%	0	0.00%
42 Months > and <= 48 Months	0	0.00%	0	0.00%
48 Months > and <= 54 Months	0	0.00%	0	0.00%
54 Months > and <= 60 Months	0	0.00%	0	0.00%
60 Months > and <= 66 Months	181,833	0.08%	1	0.09%
66 Months > and <= 72 Months	427,576	0.18%	1	0.09%
> 72 Months	0	0.00%	0	0.00%
Total	240,146,382	100.00%	1,059	100.00%



Geographic Distribution

Jurisdiction State	Balance	% Balance	Loan Count	% Loan Count
New South Wales	71,064,871	29.59%	274	25.87%
Victoria	57,524,322	23.95%	245	23.14%
Queensland	32,385,350	13.49%	149	14.07%
Western Australia	24,591,328	10.24%	96	9.07%
South Australia	45,884,757	19.11%	258	24.36%
Tasmania	1,202,937	0.50%	7	0.66%
Australian Capital Territory	5,325,575	2.22%	20	1.89%
Northern Territory	2,167,240	0.90%	10	0.94%
No Data	0	0.00%	0	0.00%
Total	240,146,382	100.00%	1,059	100.00%



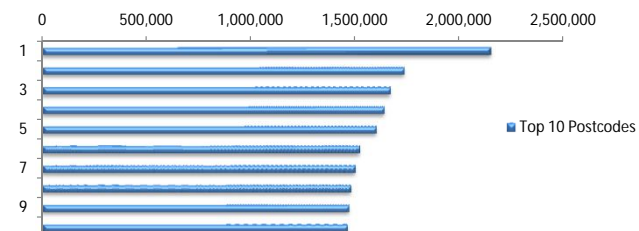
Locality

S&P Category	Balance	% Balance	Loan Count	% Loan Count
Metro	189,355,862	78.85%	809	76.39%
Non Metro	45,915,069	19.12%	231	21.81%
Inner City	4,875,451	2.03%	19	1.79%
Total	240,146,382	100.00%	1,059	100.00%



Top 10 Postcodes

Postcode	Balance	% Balance	Loan Count	% Loan Count
5108	2,150,407	0.90%	15	1.42%
3216	1,735,298	0.72%	7	0.66%
2444	1,668,794	0.69%	6	0.57%
5114	1,639,030	0.68%	11	1.04%
2155	1,602,051	0.67%	5	0.47%
3141	1,522,891	0.63%	4	0.38%
5109	1,501,039	0.63%	5	0.47%
2017	1,480,867	0.62%	4	0.38%
3132	1,470,739	0.61%	4	0.38%
6026	1,464,195	0.61%	5	0.47%
Total	16,235,312	6.76%	66	6.23%



Documentation

Document Type	Balance	% Balance	Loan Count	% Loan Count
Full Doc	240,146,382	100.00%	1,059	100.00%
Low Doc	0	0.00%	0	0.00%
No Doc	0	0.00%	0	0.00%
Total	240,146,382	100.00%	1,059	100.00%



Rate Type

Rate Type	Balance	% Balance	Loan Count	% Loan Count
Variable Rate	240,146,382	100.00%	1,059	100.00%
Fixed Rate	0	0.00%	0	0.00%
Total	240,146,382	100.00%	1,059	100.00%



Repayment Type

Repayment Type	Balance	% Balance	Loan Count	% Loan Count
Principal & Interest	189,138,221	78.76%	824	77.81%
Interest Only	49,917,222	20.79%	217	20.49%
Non-Billing	1,090,938	0.45%	18	1.70%
Total	240,146,382	100.00%	1,059	100.00%



Loan Type

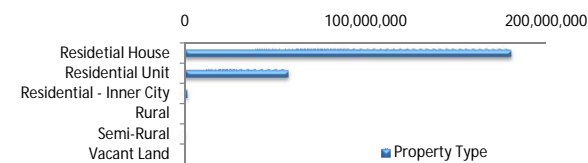
Product Category	Balance	% Balance	Loan Count	% Loan Count
Line of Credit	1,090,938	0.45%	18	1.70%
Term Loan	239,055,443	99.55%	1,041	98.30%
Total	240,146,382	100.00%	1,059	100.00%



■ Line of Credit
■ Term Loan

Property Type

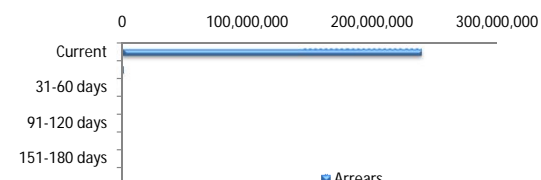
Property Type	Balance	% Balance	Loan Count	% Loan Count
Residential House	180,461,418	75.15%	813	76.77%
Residential Unit	57,628,951	24.00%	241	22.76%
Residential - Inner City	1,730,584	0.72%	4	0.38%
Rural	0	0.00%	0	0.00%
Semi-Rural	325,428	0.14%	1	0.09%
Vacant Land	0	0.00%	0	0.00%
Total	240,146,382	100.00%	1,059	100.00%



■ Property Type

Arrears

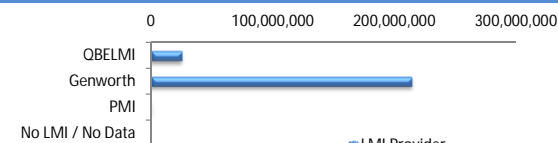
Arrears Band	Balance	% Balance	Loan Count	% Loan Count
Current	239,068,013	99.55%	1,054	99.53%
1-30 days	872,981	0.36%	4	0.38%
31-60 days	205,387	0.09%	1	0.09%
61-90 days	0	0.00%	0	0.00%
91-120 days	0	0.00%	0	0.00%
121-150 days	0	0.00%	0	0.00%
151-180 days	0	0.00%	0	0.00%
181 days or more	0	0.00%	0	0.00%
Total	240,146,382	100.00%	1,059	100.00%



■ Arrears

LMI Provider

LMI Provider	Balance	% Balance	Loan Count	% Loan Count
QBELMI	25,489,144	10.61%	137	12.94%
Genworth	214,229,662	89.21%	921	86.97%
PMI	427,576	0.18%	1	0.09%
No LMI / No Data	0	0.00%	0	0.00%
Total	240,146,382	100.00%	1,059	100.00%



■ LMI Provider

Property Occupancy

Property Occupancy	Balance	% Balance	Loan Count	% Loan Count
Investment	57,674,891	24.02%	236	22.29%
Owner Occupier	182,471,491	75.98%	823	77.71%
Total	240,146,382	100.00%	1,059	100.00%



■ Investment
■ Owner Occupier

Default Statistics

Default Data	Amount	No. of Loans
Defaulted Loans	0.00	0.00
Loss on Sale	0.00	0.00
Claims on LMI	0.00	0.00
Claims paid by LMI	0.00	0.00
Claims Denied/Reduced	0.00	0.00
Loss covered by Excess Spread	0.00	N/A