

AFG 2013-1 Trust
Collateral Report

Model Period	8
Collection Period Start	01-Oct-13
Collection Period End	31-Oct-13
No. of Days	31
Interest Period Start	10-Oct-13
Interest Period End	10-Nov-13
No. of Days	32
Determination Date	06-Nov-13
Payment Date	11-Nov-13

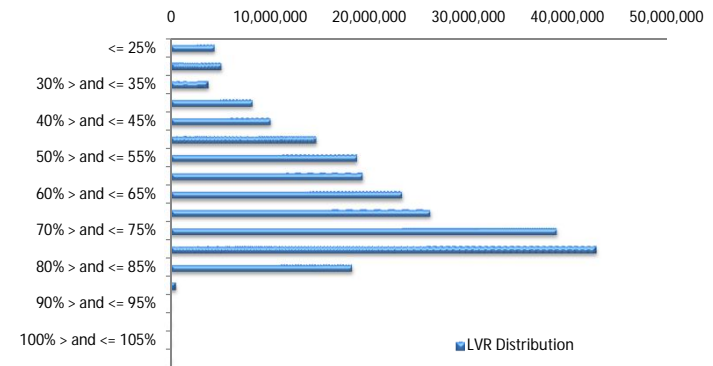


Pool Statistics

Closing Balance of Mortgages	234,838,623
Number of Loans	1,043
Average Loan Size	225,157
Largest Loan Size	792,176
Smallest Loan Size	(1,883)
Weighted Average Interest Rate	4.94%
Weighted Average LVR	62.93%
Weighted Average Seasoning	15.32

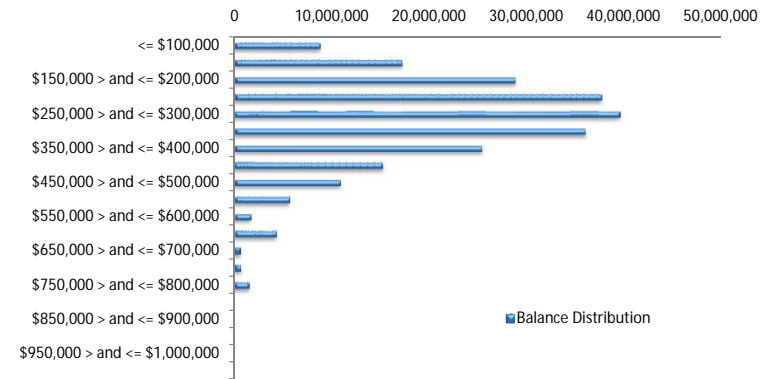
LVR Distribution

Current LTV	Balance	% Balance	Loan Count	% Loan Count
<= 25%	4,472,619	1.90%	49	4.70%
25% > and <= 30%	5,173,224	2.20%	37	3.55%
30% > and <= 35%	3,854,848	1.64%	20	1.92%
35% > and <= 40%	8,295,641	3.53%	52	4.99%
40% > and <= 45%	10,109,296	4.30%	50	4.79%
45% > and <= 50%	14,697,674	6.26%	74	7.09%
50% > and <= 55%	18,796,480	8.00%	76	7.29%
55% > and <= 60%	19,350,360	8.24%	89	8.53%
60% > and <= 65%	23,324,396	9.93%	102	9.78%
65% > and <= 70%	26,151,991	11.14%	112	10.74%
70% > and <= 75%	38,867,523	16.55%	160	15.34%
75% > and <= 80%	42,862,398	18.25%	157	15.05%
80% > and <= 85%	18,294,184	7.79%	63	6.04%
85% > and <= 90%	587,989	0.25%	2	0.19%
90% > and <= 95%	0	0.00%	0	0.00%
95% > and <= 100%	0	0.00%	0	0.00%
100% > and <= 105%	0	0.00%	0	0.00%
> 105%	0	0.00%	0	0.00%
Total	234,838,623	100.00%	1,043	100.00%



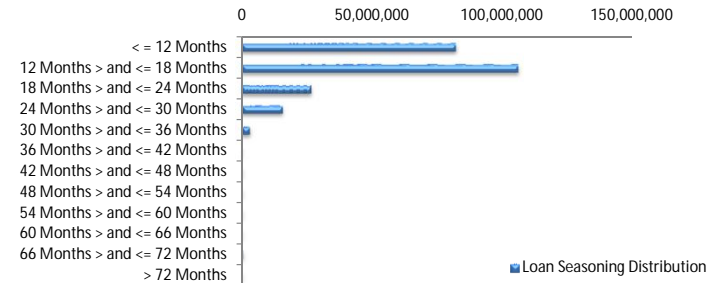
Balance Distribution

Current Balance	Balance	% Balance	Loan Count	% Loan Count
<= \$100,000	8,825,394	3.76%	169	16.20%
\$100,000 > and <= \$150,000	17,260,370	7.35%	136	13.04%
\$150,000 > and <= \$200,000	28,877,396	12.30%	164	15.72%
\$200,000 > and <= \$250,000	37,740,547	16.07%	167	16.01%
\$250,000 > and <= \$300,000	39,623,949	16.87%	144	13.81%
\$300,000 > and <= \$350,000	36,062,362	15.36%	111	10.64%
\$350,000 > and <= \$400,000	25,460,560	10.84%	68	6.52%
\$400,000 > and <= \$450,000	15,285,226	6.51%	36	3.45%
\$450,000 > and <= \$500,000	10,894,343	4.64%	23	2.21%
\$500,000 > and <= \$550,000	5,725,289	2.44%	11	1.05%
\$550,000 > and <= \$600,000	1,734,346	0.74%	3	0.29%
\$600,000 > and <= \$650,000	4,386,367	1.87%	7	0.67%
\$650,000 > and <= \$700,000	666,841	0.28%	1	0.10%
\$700,000 > and <= \$750,000	727,759	0.31%	1	0.10%
\$750,000 > and <= \$800,000	1,567,874	0.67%	2	0.19%
\$800,000 > and <= \$850,000	0	0.00%	0	0.00%
\$850,000 > and <= \$900,000	0	0.00%	0	0.00%
\$900,000 > and <= \$950,000	0	0.00%	0	0.00%
\$950,000 > and <= \$1,000,000	0	0.00%	0	0.00%
> \$1,000,000	0	0.00%	0	0.00%
Total	234,838,623	100.00%	1,043	100.00%



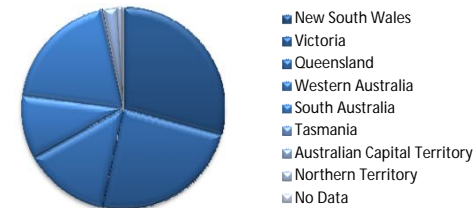
Loan Seasoning Distribution

Seasoning (Months)	Balance	% Balance	Loan Count	% Loan Count
<= 12 Months	82,330,807	35.06%	356	34.13%
12 Months > and <= 18 Months	106,203,559	45.22%	463	44.39%
18 Months > and <= 24 Months	26,914,087	11.46%	138	13.23%
24 Months > and <= 30 Months	15,529,800	6.61%	72	6.90%
30 Months > and <= 36 Months	3,250,869	1.38%	12	1.15%
36 Months > and <= 42 Months	0	0.00%	0	0.00%
42 Months > and <= 48 Months	0	0.00%	0	0.00%
48 Months > and <= 54 Months	0	0.00%	0	0.00%
54 Months > and <= 60 Months	0	0.00%	0	0.00%
60 Months > and <= 66 Months	181,859	0.08%	1	0.10%
66 Months > and <= 72 Months	427,641	0.18%	1	0.10%
> 72 Months	0	0.00%	0	0.00%
Total	234,838,623	100.00%	1,043	100.00%



Geographic Distribution

Jurisdiction State	Balance	% Balance	Loan Count	% Loan Count
New South Wales	68,710,188	29.26%	267	25.60%
Victoria	56,582,358	24.09%	243	23.30%
Queensland	31,867,062	13.57%	147	14.09%
Western Australia	23,886,748	10.17%	94	9.01%
South Australia	45,200,881	19.25%	255	24.45%
Tasmania	1,154,240	0.49%	7	0.67%
Australian Capital Territory	5,275,276	2.25%	20	1.92%
Northern Territory	2,161,869	0.92%	10	0.96%
No Data	0	0.00%	0	0.00%
Total	234,838,623	100.00%	1,043	100.00%



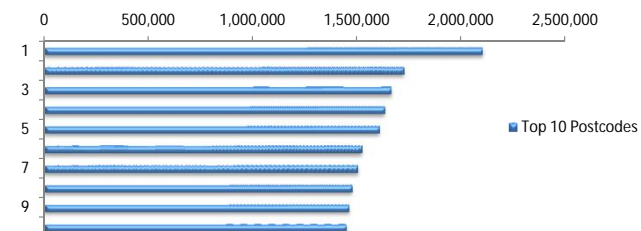
Locality

S&P Category	Balance	% Balance	Loan Count	% Loan Count
Metro	184,830,270	78.71%	795	76.22%
Non Metro	45,513,382	19.38%	230	22.05%
Inner City	4,494,971	1.91%	18	1.73%
Total	234,838,623	100.00%	1,043	100.00%



Top 10 Postcodes

Postcode	Balance	% Balance	Loan Count	% Loan Count
5108	2,100,023	0.89%	15	1.44%
3216	1,723,476	0.73%	7	0.67%
2444	1,662,586	0.71%	6	0.58%
5114	1,631,799	0.69%	11	1.05%
2155	1,605,342	0.68%	5	0.48%
3141	1,522,377	0.65%	4	0.38%
5109	1,503,245	0.64%	5	0.48%
2017	1,475,219	0.63%	4	0.38%
3132	1,460,933	0.62%	4	0.38%
2036	1,448,541	0.62%	4	0.38%
Total	16,133,541	6.87%	65	6.23%



Documentation

Document Type	Balance	% Balance	Loan Count	% Loan Count
Full Doc	234,838,623	100.00%	1,043	100.00%
Low Doc	0	0.00%	0	0.00%
No Doc	0	0.00%	0	0.00%
Total	234,838,623	100.00%	1,043	100.00%



Rate Type

Rate Type	Balance	% Balance	Loan Count	% Loan Count
Variable Rate	234,838,623	100.00%	1,043	100.00%
Fixed Rate	0	0.00%	0	0.00%
Total	234,838,623	100.00%	1,043	100.00%



Repayment Type

Repayment Type	Balance	% Balance	Loan Count	% Loan Count
Principal & Interest	183,928,259	78.32%	809	77.56%
Interest Only	49,824,102	21.22%	216	20.71%
Non-Billing	1,086,262	0.46%	18	1.73%
Total	234,838,623	100.00%	1,043	100.00%



Loan Type

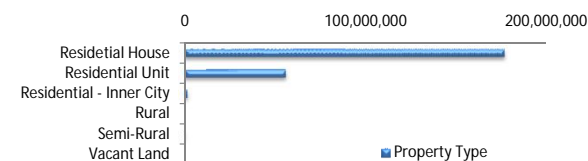
Product Category	Balance	% Balance	Loan Count	% Loan Count
Line of Credit	1,086,262	0.46%	18	1.73%
Term Loan	233,752,361	99.54%	1,025	98.27%
Total	234,838,623	100.00%	1,043	100.00%



■ Line of Credit
■ Term Loan

Property Type

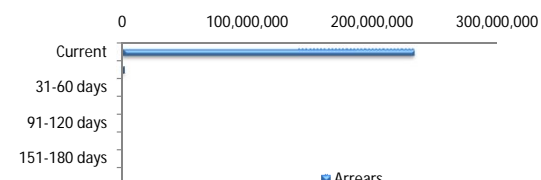
Property Type	Balance	% Balance	Loan Count	% Loan Count
Residential House	176,684,223	75.24%	801	76.80%
Residential Unit	56,094,482	23.89%	237	22.72%
Residential - Inner City	1,731,235	0.74%	4	0.38%
Rural	0	0.00%	0	0.00%
Semi-Rural	328,683	0.14%	1	0.10%
Vacant Land	0	0.00%	0	0.00%
Total	234,838,623	100.00%	1,043	100.00%



■ Property Type

Arrears

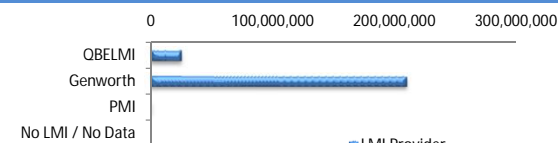
Arrears Band	Balance	% Balance	Loan Count	% Loan Count
Current	233,118,451	99.27%	1,036	99.33%
1-30 days	1,720,172	0.73%	7	0.67%
31-60 days	0	0.00%	0	0.00%
61-90 days	0	0.00%	0	0.00%
91-120 days	0	0.00%	0	0.00%
121-150 days	0	0.00%	0	0.00%
151-180 days	0	0.00%	0	0.00%
181 days or more	0	0.00%	0	0.00%
Total	234,838,623	100.00%	1,043	100.00%



■ Arrears

LMI Provider

LMI Provider	Balance	% Balance	Loan Count	% Loan Count
QBELMI	24,432,658	10.40%	132	12.66%
Genworth	209,978,324	89.41%	910	87.25%
PMI	427,641	0.18%	1	0.10%
No LMI / No Data	0	0.00%	0	0.00%
Total	234,838,623	100.00%	1,043	100.00%



■ LMI Provider

Property Occupancy

Property Occupancy	Balance	% Balance	Loan Count	% Loan Count
Investment	55,918,234	23.81%	231	22.15%
Owner Occupier	178,920,388	76.19%	812	77.85%
Total	234,838,623	100.00%	1,043	100.00%



■ Investment
■ Owner Occupier

Default Statistics

Default Data	Amount	No. of Loans
Defaulted Loans	0.00	0.00
Loss on Sale	0.00	0.00
Claims on LMI	0.00	0.00
Claims paid by LMI	0.00	0.00
Claims Denied/Reduced	0.00	0.00
Loss covered by Excess Spread	0.00	N/A