

AFG 2013-1 Trust
Collateral Report



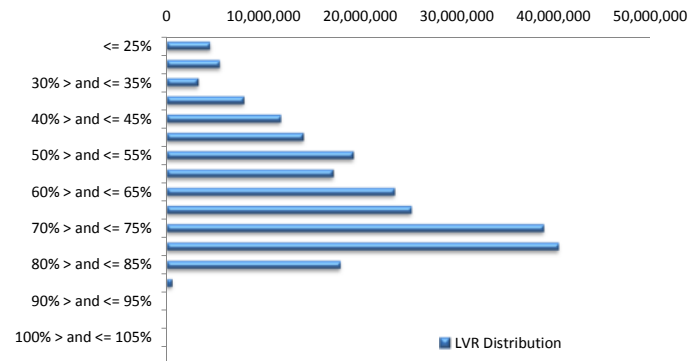
Model Period	9
Collection Period Start	01-Nov-13
Collection Period End	30-Nov-13
No. of Days	30
Interest Period Start	11-Nov-13
Interest Period End	09-Dec-13
No. of Days	29
Determination Date	05-Dec-13
Payment Date	10-Dec-13

Pool Statistics

Closing Balance of Mortgages	230,449,384
Number of Loans	1,029
Average Loan Size	223,955
Largest Loan Size	791,093
Smallest Loan Size	(117)
Weighted Average Interest Rate	4.94%
Weighted Average LVR	62.78%
Weighted Average Seasoning	16.31

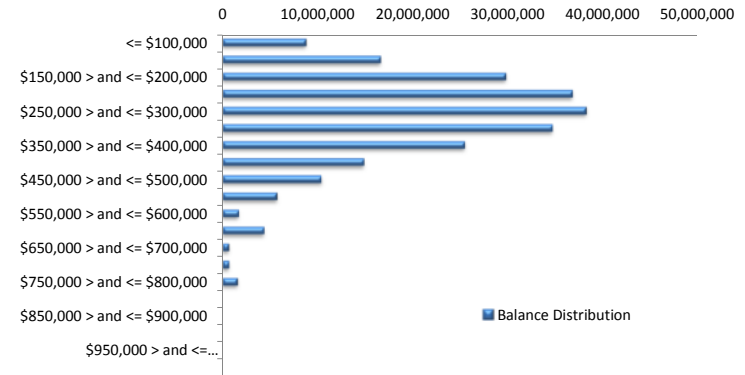
LVR Distribution

Current LTV	Balance	% Balance	Loan Count	% Loan Count
<= 25%	4,517,352	1.96%	50	4.86%
25% > and <= 30%	5,514,388	2.39%	36	3.50%
30% > and <= 35%	3,270,334	1.42%	20	1.94%
35% > and <= 40%	7,983,585	3.46%	51	4.96%
40% > and <= 45%	11,824,283	5.13%	57	5.54%
45% > and <= 50%	14,102,210	6.12%	70	6.80%
50% > and <= 55%	19,280,254	8.37%	81	7.87%
55% > and <= 60%	17,178,100	7.45%	84	8.16%
60% > and <= 65%	23,550,210	10.22%	98	9.52%
65% > and <= 70%	25,276,819	10.97%	108	10.50%
70% > and <= 75%	38,919,946	16.89%	163	15.84%
75% > and <= 80%	40,478,725	17.57%	147	14.29%
80% > and <= 85%	17,965,269	7.80%	62	6.03%
85% > and <= 90%	587,908	0.26%	2	0.19%
90% > and <= 95%	0	0.00%	0	0.00%
95% > and <= 100%	0	0.00%	0	0.00%
100% > and <= 105%	0	0.00%	0	0.00%
> 105%	0	0.00%	0	0.00%
Total	230,449,384	100.00%	1,029	100.00%



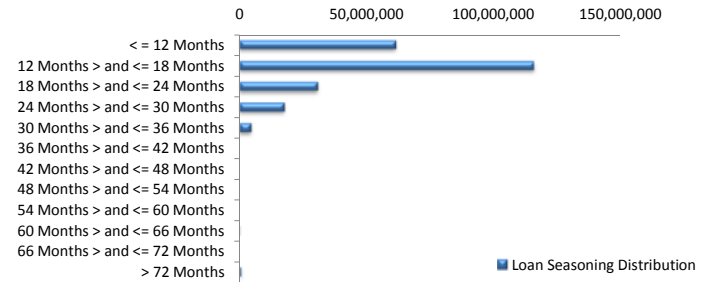
Balance Distribution

Current Balance	Balance	% Balance	Loan Count	% Loan Count
<= \$100,000	8,772,309	3.81%	169	16.42%
\$100,000 > and <= \$150,000	16,633,536	7.22%	131	12.73%
\$150,000 > and <= \$200,000	29,793,300	12.93%	170	16.52%
\$200,000 > and <= \$250,000	36,806,532	15.97%	163	15.84%
\$250,000 > and <= \$300,000	38,216,118	16.58%	139	13.51%
\$300,000 > and <= \$350,000	34,693,737	15.05%	107	10.40%
\$350,000 > and <= \$400,000	25,454,349	11.05%	68	6.61%
\$400,000 > and <= \$450,000	14,883,981	6.46%	35	3.40%
\$450,000 > and <= \$500,000	10,403,579	4.51%	22	2.14%
\$500,000 > and <= \$550,000	5,717,439	2.48%	11	1.07%
\$550,000 > and <= \$600,000	1,731,995	0.75%	3	0.29%
\$600,000 > and <= \$650,000	4,385,077	1.90%	7	0.68%
\$650,000 > and <= \$700,000	666,749	0.29%	1	0.10%
\$700,000 > and <= \$750,000	723,997	0.31%	1	0.10%
\$750,000 > and <= \$800,000	1,566,685	0.68%	2	0.19%
\$800,000 > and <= \$850,000	0	0.00%	0	0.00%
\$850,000 > and <= \$900,000	0	0.00%	0	0.00%
\$900,000 > and <= \$950,000	0	0.00%	0	0.00%
\$950,000 > and <= \$1,000,000	0	0.00%	0	0.00%
> \$1,000,000	0	0.00%	0	0.00%
Total	230,449,384	100.00%	1,029	100.00%



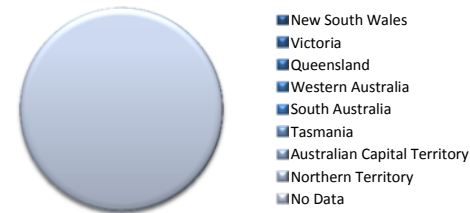
Loan Seasoning Distribution

Seasoning (Months)	Balance	% Balance	Loan Count	% Loan Count
<= 12 Months	61,397,810	26.64%	264	25.66%
12 Months > and <= 18 Months	115,744,071	50.23%	506	49.17%
18 Months > and <= 24 Months	30,656,006	13.30%	152	14.77%
24 Months > and <= 30 Months	17,590,814	7.63%	88	8.55%
30 Months > and <= 36 Months	4,450,880	1.93%	17	1.65%
36 Months > and <= 42 Months	0	0.00%	0	0.00%
42 Months > and <= 48 Months	0	0.00%	0	0.00%
48 Months > and <= 54 Months	0	0.00%	0	0.00%
54 Months > and <= 60 Months	0	0.00%	0	0.00%
60 Months > and <= 66 Months	181,831	0.08%	1	0.10%
66 Months > and <= 72 Months	0	0.00%	0	0.00%
> 72 Months	427,971	0.19%	1	0.10%
Total	230,449,384	100.00%	1,029	100.00%



Geographic Distribution

Jurisdiction State	Balance	% Balance	Loan Count	% Loan Count
New South Wales	66,554,095	28.88%	261	25.36%
Victoria	55,536,653	24.10%	239	23.23%
Queensland	31,354,216	13.61%	146	14.19%
Western Australia	23,775,556	10.32%	94	9.14%
South Australia	44,652,057	19.38%	252	24.49%
Tasmania	1,150,944	0.50%	7	0.68%
Australian Capital Territory	5,268,258	2.29%	20	1.94%
Northern Territory	2,157,606	0.94%	10	0.97%
No Data	0	0.00%	0	0.00%
Total	230,449,384	100.00%	1,029	100.00%



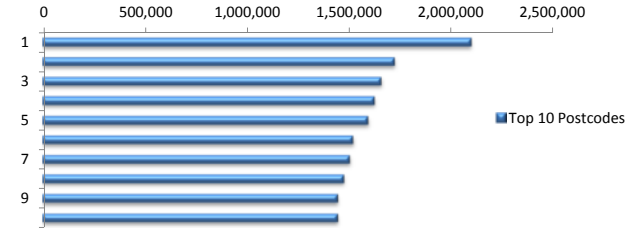
Locality

S&P Category	Balance	% Balance	Loan Count	% Loan Count
Metro	186,943,797	81.12%	809	78.62%
Non Metro	41,173,353	17.87%	212	20.60%
Inner City	2,332,234	1.01%	8	0.78%
Total	230,449,384	100.00%	1,029	100.00%



Top 10 Postcodes

Postcode	Balance	% Balance	Loan Count	% Loan Count
5108	2,101,417	0.91%	15	1.46%
3216	1,725,193	0.75%	7	0.68%
2444	1,659,447	0.72%	6	0.58%
5114	1,626,072	0.71%	11	1.07%
2155	1,594,698	0.69%	5	0.49%
3141	1,521,481	0.66%	4	0.39%
5109	1,505,845	0.65%	5	0.49%
2017	1,477,452	0.64%	4	0.39%
3132	1,446,865	0.63%	4	0.39%
2036	1,446,818	0.63%	4	0.39%
Total	16,105,288	6.99%	65	6.32%



Documentation

Document Type	Balance	% Balance	Loan Count	% Loan Count
Full Doc	230,449,384	100.00%	1,029	100.00%
Low Doc	0	0.00%	0	0.00%
No Doc	0	0.00%	0	0.00%
Total	230,449,384	100.00%	1,029	100.00%



Rate Type

Rate Type	Balance	% Balance	Loan Count	% Loan Count
Variable Rate	230,449,384	100.00%	1,029	100.00%
Fixed Rate	0	0.00%	0	0.00%
Total	230,449,384	100.00%	1,029	100.00%



Repayment Type

Repayment Type	Balance	% Balance	Loan Count	% Loan Count
Principal & Interest	180,905,900	78.50%	800	77.75%
Interest Only	48,461,120	21.03%	211	20.51%
Non-Billing	1,082,364	0.47%	18	1.75%
Total	230,449,384	100.00%	1,029	100.00%



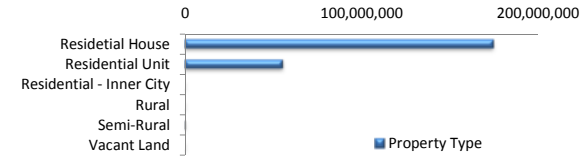
Loan Type

Product Category	Balance	% Balance	Loan Count	% Loan Count
Line of Credit	1,082,364	0.47%	18	1.75%
Term Loan	229,367,020	99.53%	1,011	98.25%
Total	230,449,384	100.00%	1,029	100.00%



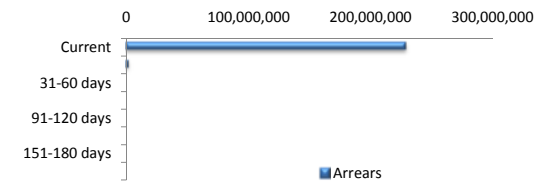
Property Type

Property Type	Balance	% Balance	Loan Count	% Loan Count
Residential House	174,720,912	75.82%	796	77.36%
Residential Unit	55,401,146	24.04%	232	22.55%
Residential - Inner City	0	0.00%	0	0.00%
Rural	0	0.00%	0	0.00%
Semi-Rural	327,327	0.14%	1	0.10%
Vacant Land	0	0.00%	0	0.00%
Total	230,449,384	100.00%	1,029	100.00%



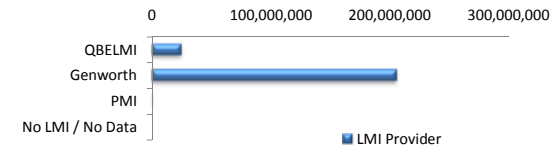
Arrears

Arrears Band	Balance	% Balance	Loan Count	% Loan Count
Current	228,343,532	99.09%	1,021	99.22%
1-30 days	2,105,852	0.91%	8	0.78%
31-60 days	0	0.00%	0	0.00%
61-90 days	0	0.00%	0	0.00%
91-120 days	0	0.00%	0	0.00%
121-150 days	0	0.00%	0	0.00%
151-180 days	0	0.00%	0	0.00%
181 days or more	0	0.00%	0	0.00%
Total	230,449,384	100.00%	1,029	100.00%



LMI Provider

LMI Provider	Balance	% Balance	Loan Count	% Loan Count
QBELMI	24,344,980	10.56%	132	12.83%
Genworth	205,676,433	89.25%	896	87.07%
PMI	427,971	0.19%	1	0.10%
No LMI / No Data	0	0.00%	0	0.00%
Total	230,449,384	100.00%	1,029	100.00%



Property Occupancy

Property Occupancy	Balance	% Balance	Loan Count	% Loan Count
Investment	54,221,629	23.53%	225	21.87%
Owner Occupier	176,227,755	76.47%	804	78.13%
Total	230,449,384	100.00%	1,029	100.00%



Default Statistics

Default Data	Amount	No. of Loans
Defaulted Loans	0.00	0.00
Loss on Sale	0.00	0.00
Claims on LMI	0.00	0.00
Claims paid by LMI	0.00	0.00
Claims Denied/Reduced	0.00	0.00
Loss covered by Excess Spread	0.00	N/A