

**AFG 2013-1 Trust
Collateral Report**



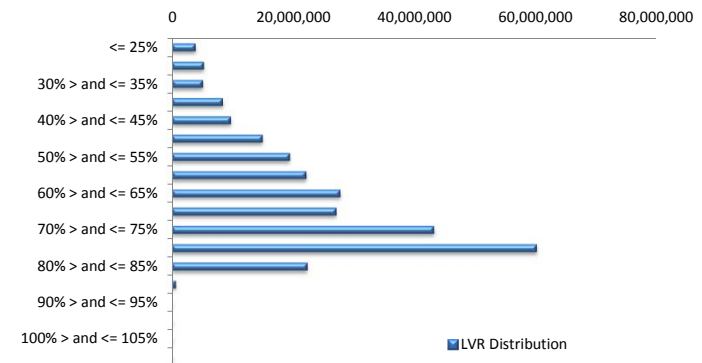
Model Period	1
Collection Period Start	24-Feb-13
Collection Period End	31-Mar-13
No. of Days	36
Interest Period Start	27-Mar-13
Interest Period End	09-Apr-13
No. of Days	14
Determination Date	05-Apr-13
Payment Date	10-Apr-13

Pool Statistics

Closing Balance of Mortgages	269,488,627
Number of Loans	1,149
Average Loan Size	234,542
Largest Loan Size	798,599
Smallest Loan Size	0
Weighted Average Interest Rate	5.44%
Weighted Average LVR	64.40%
Weighted Average Seasoning	8.40

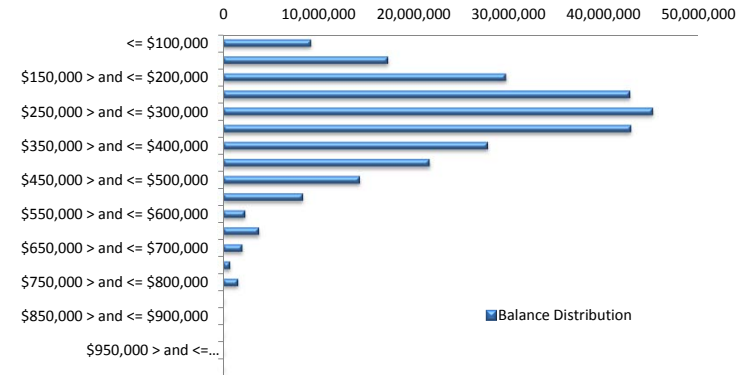
LVR Distribution

Current LTV	Balance	% Balance	Loan Count	% Loan Count
<= 25%	3,836,292	1.42%	37	3.22%
25% > and <= 30%	5,224,664	1.94%	35	3.05%
30% > and <= 35%	5,030,374	1.87%	31	2.70%
35% > and <= 40%	8,348,978	3.10%	50	4.35%
40% > and <= 45%	9,680,851	3.59%	47	4.09%
45% > and <= 50%	14,898,019	5.53%	72	6.27%
50% > and <= 55%	19,376,380	7.19%	78	6.79%
55% > and <= 60%	22,109,107	8.20%	94	8.18%
60% > and <= 65%	27,710,673	10.28%	114	9.92%
65% > and <= 70%	27,080,720	10.05%	118	10.27%
70% > and <= 75%	43,183,718	16.02%	180	15.67%
75% > and <= 80%	60,133,744	22.31%	212	18.45%
80% > and <= 85%	22,287,271	8.27%	79	6.88%
85% > and <= 90%	587,836	0.22%	2	0.17%
90% > and <= 95%	0	0.00%	0	0.00%
95% > and <= 100%	0	0.00%	0	0.00%
100% > and <= 105%	0	0.00%	0	0.00%
> 105%	0	0.00%	0	0.00%
Total	269,488,627	100.00%	1,149	100.00%



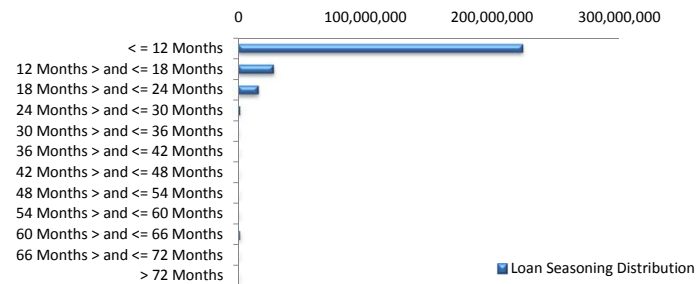
Balance Distribution

Current Balance	Balance	% Balance	Loan Count	% Loan Count
<= \$100,000	9,227,598	3.42%	171	14.88%
\$100,000 > and <= \$150,000	17,326,239	6.43%	136	11.84%
\$150,000 > and <= \$200,000	29,695,047	11.02%	170	14.80%
\$200,000 > and <= \$250,000	42,741,504	15.86%	189	16.45%
\$250,000 > and <= \$300,000	45,111,295	16.74%	164	14.27%
\$300,000 > and <= \$350,000	42,826,997	15.89%	132	11.49%
\$350,000 > and <= \$400,000	27,786,681	10.31%	74	6.44%
\$400,000 > and <= \$450,000	21,675,261	8.04%	51	4.44%
\$450,000 > and <= \$500,000	14,348,130	5.32%	30	2.61%
\$500,000 > and <= \$550,000	8,378,425	3.11%	16	1.39%
\$550,000 > and <= \$600,000	2,294,665	0.85%	4	0.35%
\$600,000 > and <= \$650,000	3,763,640	1.40%	6	0.52%
\$650,000 > and <= \$700,000	2,009,664	0.75%	3	0.26%
\$700,000 > and <= \$750,000	729,267	0.27%	1	0.09%
\$750,000 > and <= \$800,000	1,574,213	0.58%	2	0.17%
\$800,000 > and <= \$850,000	0	0.00%	0	0.00%
\$850,000 > and <= \$900,000	0	0.00%	0	0.00%
\$900,000 > and <= \$950,000	0	0.00%	0	0.00%
\$950,000 > and <= \$1,000,000	0	0.00%	0	0.00%
> \$1,000,000	0	0.00%	0	0.00%
Total	269,488,627	100.00%	1,149	100.00%



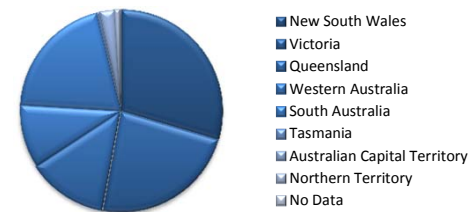
Loan Seasoning Distribution

Seasoning (Months)	Balance	% Balance	Loan Count	% Loan Count
<= 12 Months	223,251,107	82.84%	931	81.03%
12 Months > and <= 18 Months	27,743,945	10.30%	144	12.53%
18 Months > and <= 24 Months	15,849,685	5.88%	67	5.83%
24 Months > and <= 30 Months	1,424,124	0.53%	3	0.26%
30 Months > and <= 36 Months	0	0.00%	0	0.00%
36 Months > and <= 42 Months	0	0.00%	0	0.00%
42 Months > and <= 48 Months	0	0.00%	0	0.00%
48 Months > and <= 54 Months	0	0.00%	0	0.00%
54 Months > and <= 60 Months	181,938	0.07%	1	0.09%
60 Months > and <= 66 Months	1,037,828	0.39%	3	0.26%
66 Months > and <= 72 Months	0	0.00%	0	0.00%
> 72 Months	0	0.00%	0	0.00%
Total	269,488,627	100.00%	1,149	100.00%



Geographic Distribution

Jurisdiction State	Balance	% Balance	Loan Count	% Loan Count
New South Wales	79,682,291	29.57%	297	25.85%
Victoria	62,834,098	23.32%	256	22.28%
Queensland	34,769,569	12.90%	154	13.40%
Western Australia	27,361,974	10.15%	107	9.31%
South Australia	54,276,211	20.14%	291	25.33%
Tasmania	1,285,758	0.48%	8	0.70%
Australian Capital Territory	6,639,126	2.46%	25	2.18%
Northern Territory	2,639,601	0.98%	11	0.96%
No Data	0	0.00%	0	0.00%
Total	269,488,627	100.00%	1,149	100.00%



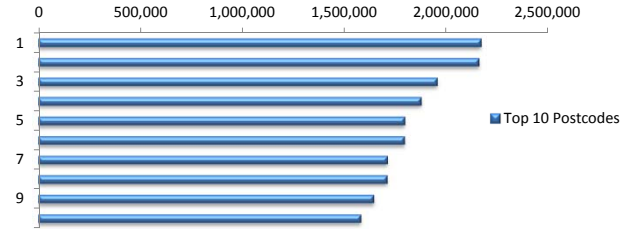
Locality

S&P Category	Balance	% Balance	Loan Count	% Loan Count
Metro	213,285,972	79.14%	884	76.94%
Non Metro	50,852,173	18.87%	245	21.32%
Inner City	5,350,482	1.99%	20	1.74%
Total	269,488,627	100.00%	1,149	100.00%



Top 10 Postcodes

Postcode	Balance	% Balance	Loan Count	% Loan Count
5108	2,171,511	0.81%	15	1.31%
5114	2,160,369	0.80%	14	1.22%
5162	1,956,367	0.73%	11	0.96%
2444	1,877,324	0.70%	7	0.61%
5126	1,797,556	0.67%	11	0.96%
3216	1,794,619	0.67%	7	0.61%
5107	1,711,172	0.63%	9	0.78%
5109	1,710,188	0.63%	6	0.52%
2155	1,643,463	0.61%	5	0.44%
2602	1,581,160	0.59%	6	0.52%
Total	18,403,730	6.83%	91	7.92%



Documentation

Document Type	Balance	% Balance	Loan Count	% Loan Count
Full Doc	269,488,627	100.00%	1,149	100.00%
Low Doc	0	0.00%	0	0.00%
No Doc	0	0.00%	0	0.00%
Total	269,488,627	100.00%	1,149	100.00%



Rate Type

Rate Type	Balance	% Balance	Loan Count	% Loan Count
Variable Rate	269,488,627	100.00%	1,149	100.00%
Fixed Rate	0	0.00%	0	0.00%
Total	269,488,627	100.00%	1,149	100.00%



Repayment Type

Repayment Type	Balance	% Balance	Loan Count	% Loan Count
Principal & Interest	213,372,644	79.18%	897	78.07%
Interest Only	54,993,556	20.41%	233	20.28%
Non-Billing	1,122,427	0.42%	19	1.65%
Total	269,488,627	100.00%	1,149	100.00%



Loan Type

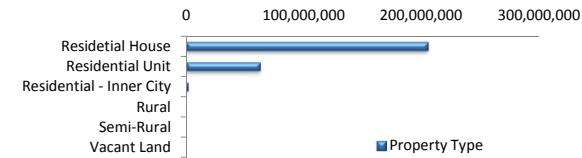
Product Category	Balance	% Balance	Loan Count	% Loan Count
Line of Credit	1,122,427	0.42%	19	1.65%
Term Loan	268,366,199	99.58%	1,130	98.35%
Total	269,488,627	100.00%	1,149	100.00%



■ Line of Credit
■ Term Loan

Property Type

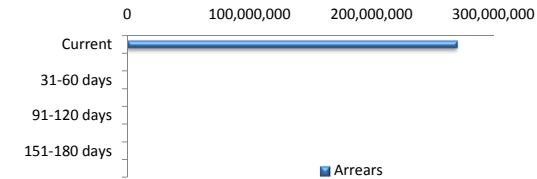
Property Type	Balance	% Balance	Loan Count	% Loan Count
Residential House	204,482,087	75.88%	887	77.20%
Residential Unit	62,678,403	23.26%	256	22.28%
Residential - Inner City	1,987,527	0.74%	5	0.44%
Rural	0	0.00%	0	0.00%
Semi-Rural	340,610	0.13%	1	0.09%
Vacant Land	0	0.00%	0	0.00%
Total	269,488,627	100.00%	1,149	100.00%



■ Property Type

Arrears

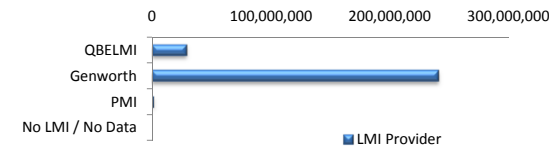
Arrears Band	Balance	% Balance	Loan Count	% Loan Count
Current	269,062,793	99.84%	1,147	99.83%
1-30 days	425,834	0.16%	2	0.17%
31-60 days	0	0.00%	0	0.00%
61-90 days	0	0.00%	0	0.00%
91-120 days	0	0.00%	0	0.00%
121-150 days	0	0.00%	0	0.00%
151-180 days	0	0.00%	0	0.00%
181 days or more	0	0.00%	0	0.00%
Total	269,488,627	100.00%	1,149	100.00%



■ Arrears

LMI Provider

LMI Provider	Balance	% Balance	Loan Count	% Loan Count
QBELMI	28,307,094	10.50%	146	12.71%
Genworth	240,143,705	89.11%	1,000	87.03%
PMI	1,037,828	0.39%	3	0.26%
No LMI / No Data	0	0.00%	0	0.00%
Total	269,488,627	100.00%	1,149	100.00%



■ LMI Provider