

AFG 2013-1 Trust
Collateral Report

Model Period	5
Collection Period Start	01-Jul-13
Collection Period End	31-Jul-13
No. of Days	31
Interest Period Start	10-Jul-13
Interest Period End	11-Aug-13
No. of Days	33
Determination Date	07-Aug-13
Payment Date	12-Aug-13

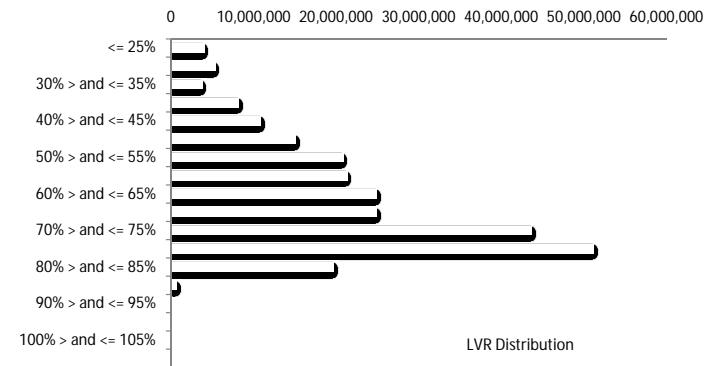


Pool Statistics

Closing Balance of Mortgages	253,049,092
Number of Loans	1,100
Average Loan Size	230,045
Largest Loan Size	794,801
Smallest Loan Size	(2,391)
Weighted Average Interest Rate	5.19%
Weighted Average LVR	63.70%
Weighted Average Seasoning	11.45

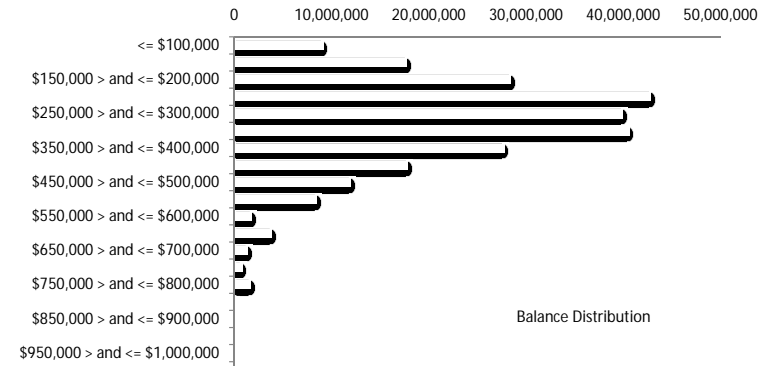
LVR Distribution

Current LTV	Balance	% Balance	Loan Count	% Loan Count
<= 25%	3,925,514	1.55%	39	3.55%
25% > and <= 30%	5,247,820	2.07%	36	3.27%
30% > and <= 35%	3,665,654	1.45%	24	2.18%
35% > and <= 40%	8,084,692	3.19%	47	4.27%
40% > and <= 45%	10,748,710	4.25%	53	4.82%
45% > and <= 50%	14,985,167	5.92%	75	6.82%
50% > and <= 55%	20,757,910	8.20%	80	7.27%
55% > and <= 60%	21,260,526	8.40%	94	8.55%
60% > and <= 65%	24,774,181	9.79%	107	9.73%
65% > and <= 70%	24,786,430	9.80%	107	9.73%
70% > and <= 75%	43,561,818	17.21%	177	16.09%
75% > and <= 80%	51,048,482	20.17%	191	17.36%
80% > and <= 85%	19,614,477	7.75%	68	6.18%
85% > and <= 90%	587,709	0.23%	2	0.18%
90% > and <= 95%	0	0.00%	0	0.00%
95% > and <= 100%	0	0.00%	0	0.00%
100% > and <= 105%	0	0.00%	0	0.00%
> 105%	0	0.00%	0	0.00%
Total	253,049,092	100.00%	1,100	100.00%



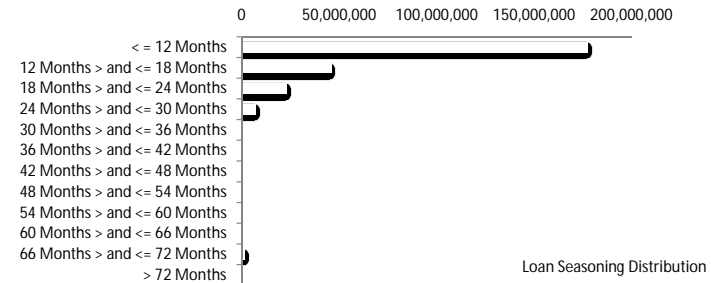
Balance Distribution

Current Balance	Balance	% Balance	Loan Count	% Loan Count
<= \$100,000	9,054,648	3.58%	170	15.45%
\$100,000 > and <= \$150,000	17,620,745	6.96%	138	12.55%
\$150,000 > and <= \$200,000	28,370,677	11.21%	162	14.73%
\$200,000 > and <= \$250,000	42,764,182	16.90%	189	17.18%
\$250,000 > and <= \$300,000	39,903,051	15.77%	145	13.18%
\$300,000 > and <= \$350,000	40,533,819	16.02%	125	11.36%
\$350,000 > and <= \$400,000	27,687,728	10.94%	74	6.73%
\$400,000 > and <= \$450,000	17,792,696	7.03%	42	3.82%
\$450,000 > and <= \$500,000	11,849,220	4.68%	25	2.27%
\$500,000 > and <= \$550,000	8,361,196	3.30%	16	1.45%
\$550,000 > and <= \$600,000	1,739,807	0.69%	3	0.27%
\$600,000 > and <= \$650,000	3,755,364	1.48%	6	0.55%
\$650,000 > and <= \$700,000	1,317,703	0.52%	2	0.18%
\$700,000 > and <= \$750,000	728,010	0.29%	1	0.09%
\$750,000 > and <= \$800,000	1,570,247	0.62%	2	0.18%
\$800,000 > and <= \$850,000	0	0.00%	0	0.00%
\$850,000 > and <= \$900,000	0	0.00%	0	0.00%
\$900,000 > and <= \$950,000	0	0.00%	0	0.00%
\$950,000 > and <= \$1,000,000	0	0.00%	0	0.00%
> \$1,000,000	0	0.00%	0	0.00%
Total	253,049,092	100.00%	1,100	100.00%



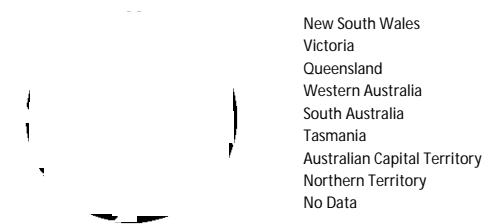
Loan Seasoning Distribution

Seasoning (Months)	Balance	% Balance	Loan Count	% Loan Count
<= 12 Months	176,975,431	69.94%	754	68.55%
12 Months > and <= 18 Months	45,455,820	17.96%	204	18.55%
18 Months > and <= 24 Months	22,458,422	8.88%	114	10.36%
24 Months > and <= 30 Months	6,943,762	2.74%	24	2.18%
30 Months > and <= 36 Months	0	0.00%	0	0.00%
36 Months > and <= 42 Months	0	0.00%	0	0.00%
42 Months > and <= 48 Months	0	0.00%	0	0.00%
48 Months > and <= 54 Months	0	0.00%	0	0.00%
54 Months > and <= 60 Months	181,899	0.07%	1	0.09%
60 Months > and <= 66 Months	0	0.00%	0	0.00%
66 Months > and <= 72 Months	1,033,758	0.41%	3	0.27%
> 72 Months	0	0.00%	0	0.00%
Total	253,049,092	100.00%	1,100	100.00%



Geographic Distribution

Jurisdiction State	Balance	% Balance	Loan Count	% Loan Count
New South Wales	74,410,063	29.41%	285	25.91%
Victoria	59,477,336	23.50%	249	22.64%
Queensland	33,764,594	13.34%	152	13.82%
Western Australia	26,322,779	10.40%	102	9.27%
South Australia	49,136,200	19.42%	270	24.55%
Tasmania	1,211,315	0.48%	7	0.64%
Australian Capital Territory	6,500,505	2.57%	25	2.27%
Northern Territory	2,226,299	0.88%	10	0.91%
No Data	0	0.00%	0	0.00%
Total	253,049,092	100.00%	1,100	100.00%



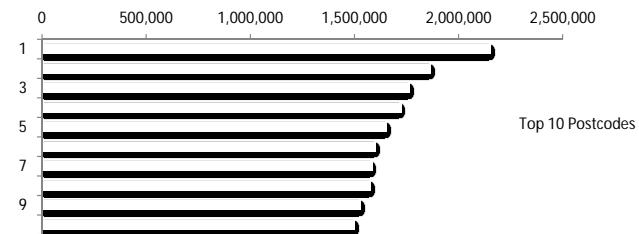
Locality

S&P Category	Balance	% Balance	Loan Count	% Loan Count
Metro	199,538,648	78.85%	842	76.55%
Non Metro	48,575,815	19.20%	239	21.73%
Inner City	4,934,629	1.95%	19	1.73%
Total	253,049,092	100.00%	1,100	100.00%



Top 10 Postcodes

Postcode	Balance	% Balance	Loan Count	% Loan Count
5108	2,152,215	0.85%	15	1.36%
2444	1,861,843	0.74%	7	0.64%
3216	1,759,413	0.70%	7	0.64%
5162	1,720,478	0.68%	10	0.91%
5114	1,652,206	0.65%	11	1.00%
2155	1,598,526	0.63%	5	0.45%
2602	1,580,924	0.62%	6	0.55%
5092	1,574,349	0.62%	12	1.09%
3141	1,524,336	0.60%	4	0.36%
5109	1,497,444	0.59%	5	0.45%
Total	16,921,733	6.69%	82	7.45%



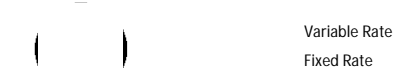
Documentation

Document Type	Balance	% Balance	Loan Count	% Loan Count
Full Doc	253,049,092	100.00%	1,100	100.00%
Low Doc	0	0.00%	0	0.00%
No Doc	0	0.00%	0	0.00%
Total	253,049,092	100.00%	1,100	100.00%



Rate Type

Rate Type	Balance	% Balance	Loan Count	% Loan Count
Variable Rate	253,049,092	100.00%	1,100	100.00%
Fixed Rate	0	0.00%	0	0.00%
Total	253,049,092	100.00%	1,100	100.00%



Repayment Type

Repayment Type	Balance	% Balance	Loan Count	% Loan Count
Principal & Interest	198,960,060	78.63%	855	77.73%
Interest Only	52,986,044	20.94%	226	20.55%
Non-Billing	1,102,989	0.44%	19	1.73%
Total	253,049,092	100.00%	1,100	100.00%



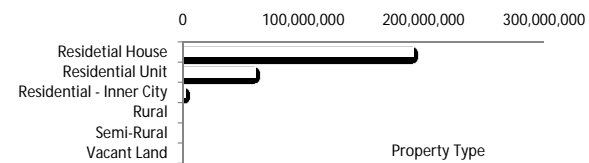
Loan Type

Product Category	Balance	% Balance	Loan Count	% Loan Count
Line of Credit	1,102,989	0.44%	19	1.73%
Term Loan	251,946,103	99.56%	1,081	98.27%
Total	253,049,092	100.00%	1,100	100.00%



Property Type

Property Type	Balance	% Balance	Loan Count	% Loan Count
Residential House	191,245,877	75.58%	848	77.09%
Residential Unit	59,744,366	23.61%	247	22.45%
Residential - Inner City	1,729,284	0.68%	4	0.36%
Rural	0	0.00%	0	0.00%
Semi-Rural	329,565	0.13%	1	0.09%
Vacant Land	0	0.00%	0	0.00%
Total	253,049,092	100.00%	1,100	100.00%



Arrears

Arrears Band	Balance	% Balance	Loan Count	% Loan Count
Current	251,397,992	99.35%	1,092	99.27%
1-30 days	1,347,478	0.53%	7	0.64%
31-60 days	0	0.00%	0	0.00%
61-90 days	303,623	0.12%	1	0.09%
91-120 days	0	0.00%	0	0.00%
121-150 days	0	0.00%	0	0.00%
151-180 days	0	0.00%	0	0.00%
181 days or more	0	0.00%	0	0.00%
Total	253,049,092	100.00%	1,100	100.00%



LMI Provider

LMI Provider	Balance	% Balance	Loan Count	% Loan Count
QBELMI	27,337,683	10.80%	144	13.09%
Genworth	224,677,651	88.79%	953	86.64%
PMI	1,033,758	0.41%	3	0.27%
No LMI / No Data	0	0.00%	0	0.00%
Total	253,049,092	100.00%	1,100	100.00%



Property Occupancy

