

AFG 2013-1 Trust
Collateral Report



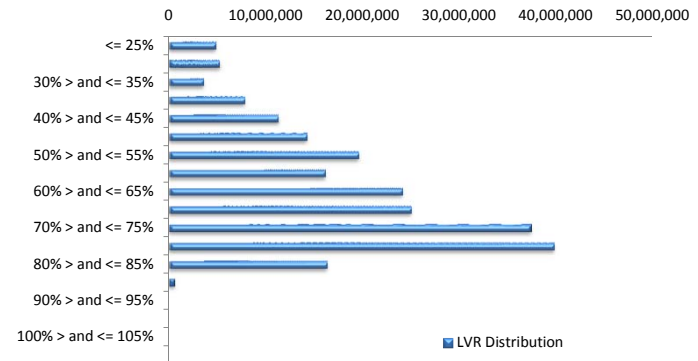
Model Period	10
Collection Period Start	01-Dec-13
Collection Period End	31-Dec-13
No. of Days	31
Interest Period Start	10-Dec-13
Interest Period End	09-Jan-14
No. of Days	31
Determination Date	07-Jan-14
Payment Date	10-Jan-14

Pool Statistics

Closing Balance of Mortgages	225,703,763
Number of Loans	1,013
Average Loan Size	222,807
Largest Loan Size	790,111
Smallest Loan Size	0
Weighted Average Interest Rate	4.94%
Weighted Average LVR	62.61%
Weighted Average Seasoning	17.32

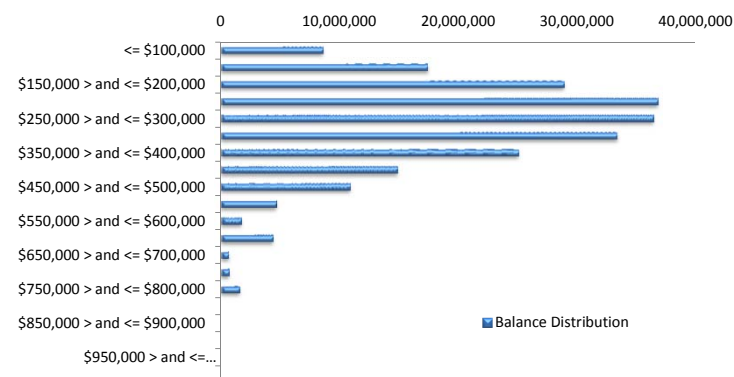
LVR Distribution

Current LTV	Balance	% Balance	Loan Count	% Loan Count
<= 25%	4,814,541	2.13%	51	5.03%
25% > and <= 30%	5,243,553	2.32%	35	3.46%
30% > and <= 35%	3,562,584	1.58%	23	2.27%
35% > and <= 40%	7,846,363	3.48%	51	5.03%
40% > and <= 45%	11,295,521	5.00%	55	5.43%
45% > and <= 50%	14,235,235	6.31%	69	6.81%
50% > and <= 55%	19,560,124	8.67%	83	8.19%
55% > and <= 60%	16,110,381	7.14%	76	7.50%
60% > and <= 65%	24,064,656	10.66%	101	9.97%
65% > and <= 70%	24,994,995	11.07%	109	10.76%
70% > and <= 75%	37,333,007	16.54%	158	15.60%
75% > and <= 80%	39,723,658	17.60%	145	14.31%
80% > and <= 85%	16,331,157	7.24%	55	5.43%
85% > and <= 90%	587,989	0.26%	2	0.20%
90% > and <= 95%	0	0.00%	0	0.00%
95% > and <= 100%	0	0.00%	0	0.00%
100% > and <= 105%	0	0.00%	0	0.00%
> 105%	0	0.00%	0	0.00%
Total	225,703,763	100.00%	1,013	100.00%



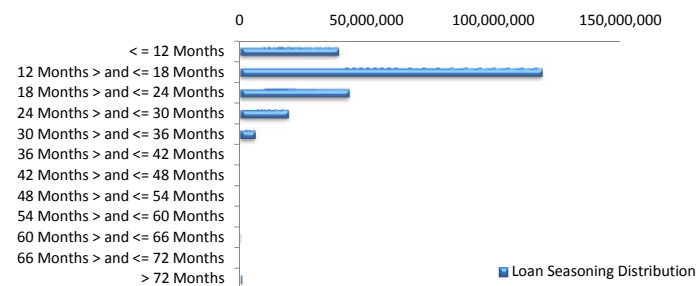
Balance Distribution

Current Balance	Balance	% Balance	Loan Count	% Loan Count
<= \$100,000	8,575,765	3.80%	167	16.49%
\$100,000 > and <= \$150,000	17,393,093	7.71%	137	13.52%
\$150,000 > and <= \$200,000	28,853,338	12.78%	164	16.19%
\$200,000 > and <= \$250,000	36,710,295	16.26%	162	15.99%
\$250,000 > and <= \$300,000	36,342,158	16.10%	132	13.03%
\$300,000 > and <= \$350,000	33,302,388	14.75%	103	10.17%
\$350,000 > and <= \$400,000	25,034,582	11.09%	67	6.61%
\$400,000 > and <= \$450,000	14,867,907	6.59%	35	3.46%
\$450,000 > and <= \$500,000	10,871,023	4.82%	23	2.27%
\$500,000 > and <= \$550,000	4,683,459	2.08%	9	0.89%
\$550,000 > and <= \$600,000	1,729,623	0.77%	3	0.30%
\$600,000 > and <= \$650,000	4,383,459	1.94%	7	0.69%
\$650,000 > and <= \$700,000	666,841	0.30%	1	0.10%
\$700,000 > and <= \$750,000	724,023	0.32%	1	0.10%
\$750,000 > and <= \$800,000	1,565,810	0.69%	2	0.20%
\$800,000 > and <= \$850,000	0	0.00%	0	0.00%
\$850,000 > and <= \$900,000	0	0.00%	0	0.00%
\$900,000 > and <= \$950,000	0	0.00%	0	0.00%
\$950,000 > and <= \$1,000,000	0	0.00%	0	0.00%
> \$1,000,000	0	0.00%	0	0.00%
Total	225,703,763	100.00%	1,013	100.00%



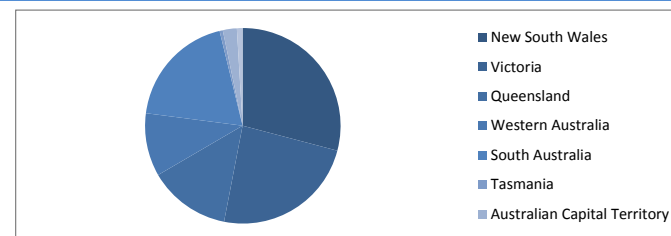
Loan Seasoning Distribution

Seasoning (Months)	Balance	% Balance	Loan Count	% Loan Count
<= 12 Months	38,631,981	17.12%	167	16.49%
12 Months > and <= 18 Months	118,740,672	52.61%	525	51.83%
18 Months > and <= 24 Months	42,771,077	18.95%	195	19.25%
24 Months > and <= 30 Months	18,974,799	8.41%	102	10.07%
30 Months > and <= 36 Months	5,975,731	2.65%	22	2.17%
36 Months > and <= 42 Months	0	0.00%	0	0.00%
42 Months > and <= 48 Months	0	0.00%	0	0.00%
48 Months > and <= 54 Months	0	0.00%	0	0.00%
54 Months > and <= 60 Months	0	0.00%	0	0.00%
60 Months > and <= 66 Months	181,859	0.08%	1	0.10%
66 Months > and <= 72 Months	0	0.00%	0	0.00%
> 72 Months	427,643	0.19%	1	0.10%
Total	225,703,763	100.00%	1,013	100.00%



Geographic Distribution

Jurisdiction State	Balance	% Balance	Loan Count	% Loan Count
New South Wales	65,655,502	29.09%	259	25.57%
Victoria	54,134,326	23.98%	234	23.10%
Queensland	30,583,056	13.55%	144	14.22%
Western Australia	23,576,229	10.45%	93	9.18%
South Australia	43,197,395	19.14%	246	24.28%
Tasmania	1,144,942	0.51%	7	0.69%
Australian Capital Territory	5,272,135	2.34%	20	1.97%
Northern Territory	2,140,179	0.95%	10	0.99%
No Data	0	0.00%	0	0.00%
Total	225,703,763	100.00%	1,013	100.00%



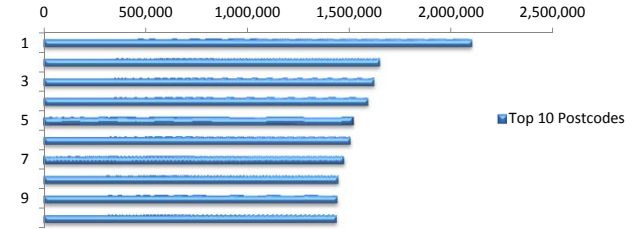
Locality

S&P Category	Balance	% Balance	Loan Count	% Loan Count
Metro	183,140,382	81.14%	795	78.48%
Non Metro	40,231,439	17.82%	210	20.73%
Inner City	2,331,942	1.03%	8	0.79%
Total	225,703,763	100.00%	1,013	100.00%



Top 10 Postcodes

Postcode	Balance	% Balance	Loan Count	% Loan Count
5108	2,101,599	0.93%	15	1.48%
2444	1,650,194	0.73%	6	0.59%
5114	1,621,794	0.72%	11	1.09%
2155	1,592,458	0.71%	5	0.49%
3141	1,520,959	0.67%	4	0.39%
3216	1,506,067	0.67%	6	0.59%
2017	1,474,624	0.65%	4	0.39%
3132	1,446,249	0.64%	4	0.39%
2036	1,441,497	0.64%	4	0.39%
6026	1,437,140	0.64%	5	0.49%
Total	15,792,581	7.00%	64	6.32%



Documentation

Document Type	Balance	% Balance	Loan Count	% Loan Count
Full Doc	225,703,763	100.00%	1,013	100.00%
Low Doc	0	0.00%	0	0.00%
No Doc	0	0.00%	0	0.00%
Total	225,703,763	100.00%	1,013	100.00%



Rate Type

Rate Type	Balance	% Balance	Loan Count	% Loan Count
Variable Rate	225,703,763	100.00%	1,013	100.00%
Fixed Rate	0	0.00%	0	0.00%
Total	225,703,763	100.00%	1,013	100.00%



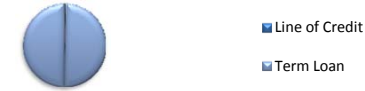
Repayment Type

Repayment Type	Balance	% Balance	Loan Count	% Loan Count
Principal & Interest	176,977,024	78.41%	787	77.69%
Interest Only	47,631,329	21.10%	208	20.53%
Non-Billing	1,095,410	0.49%	18	1.78%
Total	225,703,763	100.00%	1,013	100.00%



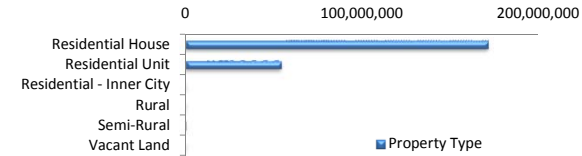
Loan Type

Product Category	Balance	% Balance	Loan Count	% Loan Count
Line of Credit	1,095,410	0.49%	18	1.78%
Term Loan	224,608,353	99.51%	995	98.22%
Total	225,703,763	100.00%	1,013	100.00%



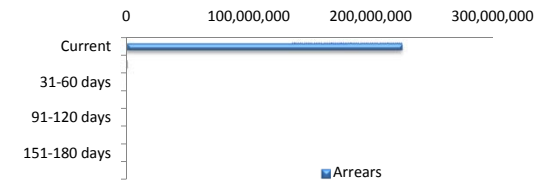
Property Type

Property Type	Balance	% Balance	Loan Count	% Loan Count
Residential House	171,195,885	75.85%	784	77.39%
Residential Unit	54,184,545	24.01%	228	22.51%
Residential - Inner City	0	0.00%	0	0.00%
Rural	0	0.00%	0	0.00%
Semi-Rural	323,333	0.14%	1	0.10%
Vacant Land	0	0.00%	0	0.00%
Total	225,703,763	100.00%	1,013	100.00%



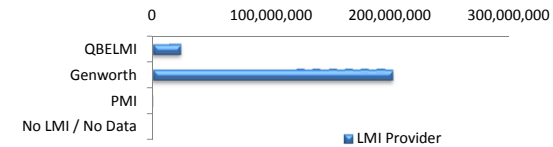
Arrears

Arrears Band	Balance	% Balance	Loan Count	% Loan Count
Current	225,017,298	99.70%	1,009	99.61%
1-30 days	579,461	0.26%	3	0.30%
31-60 days	107,003	0.05%	1	0.10%
61-90 days	0	0.00%	0	0.00%
91-120 days	0	0.00%	0	0.00%
121-150 days	0	0.00%	0	0.00%
151-180 days	0	0.00%	0	0.00%
181 days or more	0	0.00%	0	0.00%
Total	225,703,763	100.00%	1,013	100.00%



LMI Provider

LMI Provider	Balance	% Balance	Loan Count	% Loan Count
QBELMI	23,589,167	10.45%	129	12.73%
Genworth	201,686,953	89.36%	883	87.17%
PMI	427,643	0.19%	1	0.10%
No LMI / No Data	0	0.00%	0	0.00%
Total	225,703,763	100.00%	1,013	100.00%



Property Occupancy

Property Occupancy	Balance	% Balance	Loan Count	% Loan Count
Investment	52,975,363	23.47%	221	21.82%
Owner Occupier	172,728,400	76.53%	792	78.18%
Total	225,703,763	100.00%	1,013	100.00%



Default Statistics

Default Data	Amount	No. of Loans
Defaulted Loans	0.00	0.00
Loss on Sale	0.00	0.00
Claims on LMI	0.00	0.00
Claims paid by LMI	0.00	0.00
Claims Denied/Reduced	0.00	0.00
Loss covered by Excess Spread	0.00	N/A