

**AFG Series 2013-2
Collateral Report**



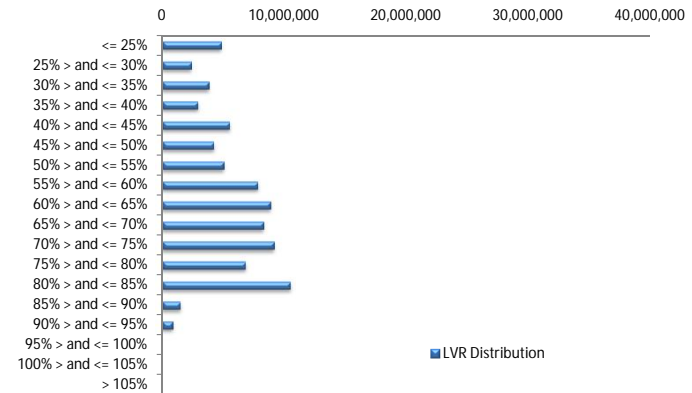
Model Period	45
Collection Period Start	01-Jul-17
Collection Period End	31-Jul-17
No. of Days	31
Interest Period Start	14-Jul-17
Interest Period End	13-Aug-17
No. of Days	31
Determination Date	09-Aug-17
Payment Date	14-Aug-17

Pool Statistics

Closing Balance of Mortgages	82,998,314
No. of Loans (Unconsolidated)	422
No. of Loans (Consolidated)	362
Average Loan Size (Unconsolidated)	196,678
Average Loan Size (Consolidated)	229,277
Largest Loan Size (Unconsolidated)	735,566
Largest Loan Size (Consolidated)	894,794
Smallest Loan Size (Unconsolidated)	(2,370)
Smallest Loan Size (Consolidated)	(2,370)
Weighted Average Interest Rate	4.44%
Weighted Average LVR	59.50%
Weighted Average Seasoning	55.59
Weighted Average Remaining Term	298.65

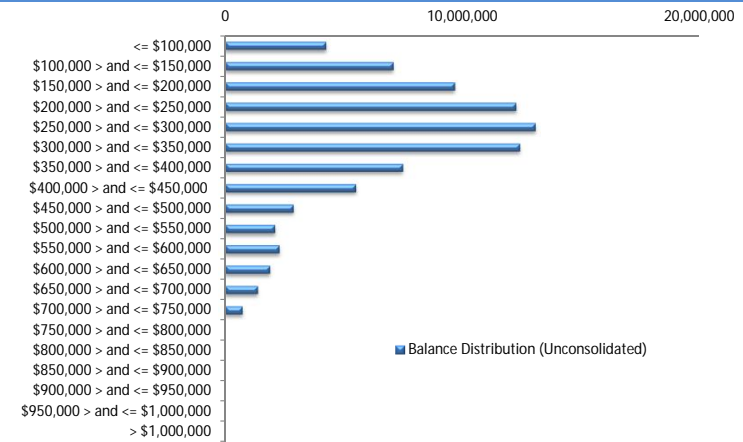
LVR Distribution

Current LTV	Balance	% Balance	Loan Count (Consol.)	% Loan Count
<= 25%	4,882,117	5.88%	85	23.48%
25% > and <= 30%	2,432,727	2.93%	15	4.14%
30% > and <= 35%	3,847,429	4.64%	19	5.25%
35% > and <= 40%	2,954,371	3.56%	15	4.14%
40% > and <= 45%	5,561,335	6.70%	22	6.08%
45% > and <= 50%	4,260,954	5.13%	20	5.52%
50% > and <= 55%	5,072,925	6.11%	16	4.42%
55% > and <= 60%	7,859,577	9.47%	25	6.91%
60% > and <= 65%	8,871,326	10.69%	33	9.12%
65% > and <= 70%	8,312,899	10.02%	27	7.46%
70% > and <= 75%	9,186,276	11.07%	27	7.46%
75% > and <= 80%	6,854,383	8.26%	19	5.25%
80% > and <= 85%	10,498,792	12.65%	32	8.84%
85% > and <= 90%	1,511,345	1.82%	5	1.38%
90% > and <= 95%	891,859	1.07%	2	0.55%
95% > and <= 100%	0	0.00%	0	0.00%
100% > and <= 105%	0	0.00%	0	0.00%
> 105%	0	0.00%	0	0.00%
Total	82,998,314	100.00%	362	100.00%



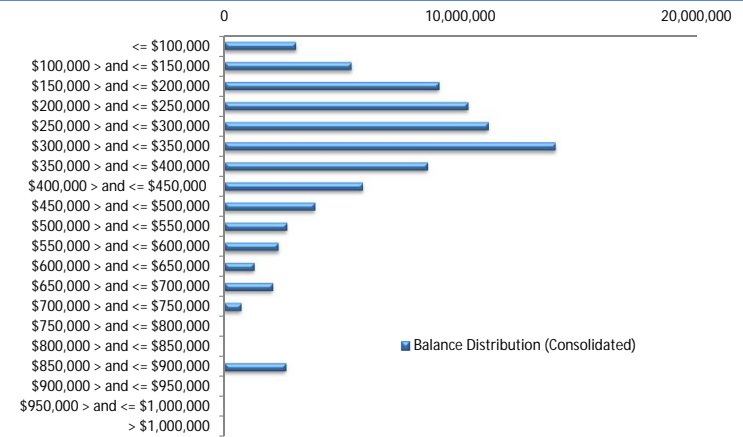
Balance Distribution (Unconsolidated)

Current Balance	Balance	% Balance	Loan Count	% Loan Count
<= \$100,000	4,254,303	5.13%	117	27.73%
\$100,000 > and <= \$150,000	7,083,680	8.53%	56	13.27%
\$150,000 > and <= \$200,000	9,672,941	11.65%	55	13.03%
\$200,000 > and <= \$250,000	12,250,864	14.76%	55	13.03%
\$250,000 > and <= \$300,000	13,064,815	15.74%	48	11.37%
\$300,000 > and <= \$350,000	12,408,742	14.95%	38	9.00%
\$350,000 > and <= \$400,000	7,480,679	9.01%	20	4.74%
\$400,000 > and <= \$450,000	5,510,362	6.64%	13	3.08%
\$450,000 > and <= \$500,000	2,880,353	3.47%	6	1.42%
\$500,000 > and <= \$550,000	2,096,552	2.53%	4	0.95%
\$550,000 > and <= \$600,000	2,291,094	2.76%	4	0.95%
\$600,000 > and <= \$650,000	1,892,674	2.28%	3	0.71%
\$650,000 > and <= \$700,000	1,375,690	1.66%	2	0.47%
\$700,000 > and <= \$750,000	735,566	0.89%	1	0.24%
\$750,000 > and <= \$800,000	0	0.00%	0	0.00%
\$800,000 > and <= \$850,000	0	0.00%	0	0.00%
\$850,000 > and <= \$900,000	0	0.00%	0	0.00%
\$900,000 > and <= \$950,000	0	0.00%	0	0.00%
\$950,000 > and <= \$1,000,000	0	0.00%	0	0.00%
> \$1,000,000	0	0.00%	0	0.00%
Total	82,998,314	100.00%	422	100.00%



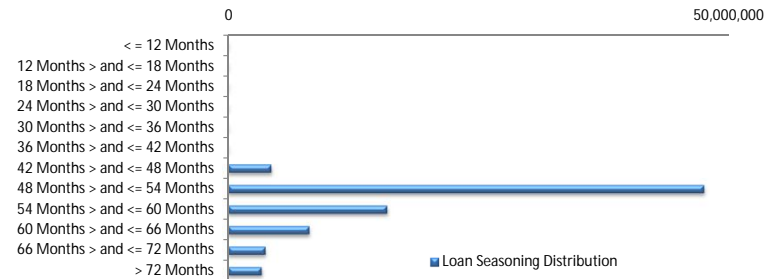
Balance Distribution (Consolidated)

Current Balance	Balance	% Balance	Loan Count (Consol.)	% Loan Count
<= \$100,000	3,049,451	3.67%	75	20.72%
\$100,000 > and <= \$150,000	5,392,508	6.50%	42	11.60%
\$150,000 > and <= \$200,000	9,085,288	10.95%	52	14.36%
\$200,000 > and <= \$250,000	10,304,068	12.41%	46	12.71%
\$250,000 > and <= \$300,000	11,168,593	13.46%	41	11.33%
\$300,000 > and <= \$350,000	14,017,722	16.89%	43	11.88%
\$350,000 > and <= \$400,000	8,604,758	10.37%	23	6.35%
\$400,000 > and <= \$450,000	5,875,380	7.08%	14	3.87%
\$450,000 > and <= \$500,000	3,842,890	4.63%	8	2.21%
\$500,000 > and <= \$550,000	2,658,430	3.20%	5	1.38%
\$550,000 > and <= \$600,000	2,301,026	2.77%	4	1.10%
\$600,000 > and <= \$650,000	1,273,260	1.53%	2	0.55%
\$650,000 > and <= \$700,000	2,068,655	2.49%	3	0.83%
\$700,000 > and <= \$750,000	735,566	0.89%	1	0.28%
\$750,000 > and <= \$800,000	0	0.00%	0	0.00%
\$800,000 > and <= \$850,000	0	0.00%	0	0.00%
\$850,000 > and <= \$900,000	2,620,719	3.16%	3	0.83%
\$900,000 > and <= \$950,000	0	0.00%	0	0.00%
\$950,000 > and <= \$1,000,000	0	0.00%	0	0.00%
> \$1,000,000	0	0.00%	0	0.00%
Total	82,998,314	100.00%	362	100.00%



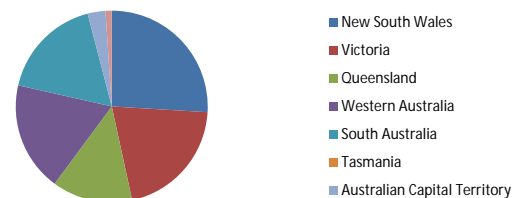
Loan Seasoning Distribution

Seasoning (Months)	Balance	% Balance	Loan Count	% Loan Count
<= 12 Months	0	0.00%	0	0.00%
12 Months > and <= 18 Months	0	0.00%	0	0.00%
18 Months > and <= 24 Months	0	0.00%	0	0.00%
24 Months > and <= 30 Months	0	0.00%	0	0.00%
30 Months > and <= 36 Months	0	0.00%	0	0.00%
36 Months > and <= 42 Months	0	0.00%	0	0.00%
42 Months > and <= 48 Months	4,317,210	5.20%	29	6.87%
48 Months > and <= 54 Months	47,564,954	57.31%	236	55.92%
54 Months > and <= 60 Months	15,897,755	19.15%	75	17.77%
60 Months > and <= 66 Months	8,115,484	9.78%	46	10.90%
66 Months > and <= 72 Months	3,747,708	4.52%	20	4.74%
> 72 Months	3,355,204	4.04%	16	3.79%
Total	82,998,314	100.00%	422	100.00%



Geographic Distribution

Jurisdiction State	Balance	% Balance	Loan Count (Consol.)	% Loan Count
New South Wales	21,527,977	25.94%	94	25.97%
Victoria	17,133,142	20.64%	85	23.48%
Queensland	11,261,047	13.57%	48	13.26%
Western Australia	15,279,555	18.41%	50	13.81%
South Australia	14,434,735	17.39%	75	20.72%
Tasmania	(300)	0.00%	1	0.28%
Australian Capital Territory	2,492,902	3.00%	8	2.21%
Northern Territory	869,256	1.05%	1	0.28%
No Data	0	0.00%	0	0.00%
Total	82,998,314	100.00%	362	100.00%



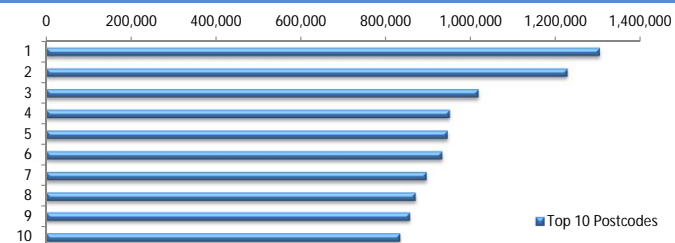
Locality

S&P Category	Balance	% Balance	Loan Count (Consol.)	% Loan Count
Metro	68,291,874	82.28%	288	79.56%
Non Metro	13,662,686	16.46%	69	19.06%
Inner City	1,043,754	1.26%	5	1.38%
No Data	0	0.00%	0	0.00%
Total	82,998,314	100.00%	362	100.00%



Top 10 Postcodes

Postcode	Balance	% Balance	Loan Count (Consol.)	% Loan Count
2031	1,302,643	1.57%	3	0.71%
2913	1,226,566	1.48%	4	0.95%
6065	1,017,156	1.23%	2	0.47%
2170	949,659	1.14%	3	0.71%
6030	944,606	1.14%	3	0.71%
2602	931,626	1.12%	3	0.71%
6052	894,794	1.08%	1	0.24%
832	869,256	1.05%	1	0.24%
4179	856,669	1.03%	1	0.24%
2081	833,442	1.00%	2	0.47%
Total	9,826,417	11.84%	23	5.45%



Documentation

Document Type	Balance	% Balance	Loan Count	% Loan Count
Full Doc	82,998,314	100.00%	422	100.00%
Low Doc	0	0.00%	0	0.00%
No Doc	0	0.00%	0	0.00%
Total	82,998,314	100.00%	422	100.00%



Rate Type

Rate Type	Balance	% Balance	Loan Count	% Loan Count
Variable Rate	82,998,314	100.00%	422	100.00%
Fixed Rate	0	0.00%	0	0.00%
Total	82,998,314	100.00%	422	100.00%



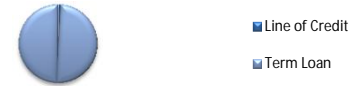
Repayment Type

Repayment Type	Balance	% Balance	Loan Count	% Loan Count
Principal & Interest	68,942,844	83.07%	362	85.78%
Interest Only	13,242,883	15.96%	53	12.56%
Non-Billing	812,587	0.98%	7	1.66%
Total	82,998,314	100.00%	422	100.00%



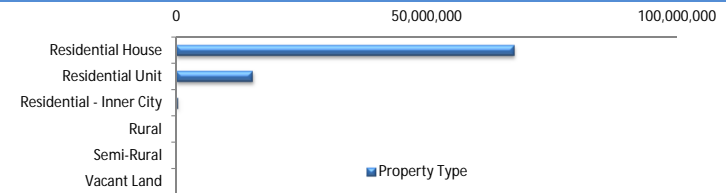
Loan Type

Product Category	Balance	% Balance	Loan Count	% Loan Count
Line of Credit	812,587	0.98%	7	1.66%
Term Loan	82,185,727	99.02%	415	98.34%
Total	82,998,314	100.00%	422	100.00%



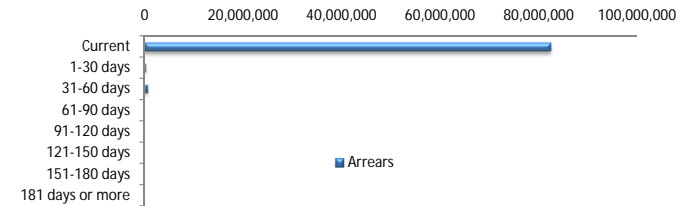
Property Type

Property Type	Balance	% Balance	Loan Count (Consol.)	% Loan Count
Residential House	67,468,556	81.29%	288	79.56%
Residential Unit	15,258,721	18.38%	72	19.89%
Residential - Inner City	271,038	0.33%	2	0.55%
Rural	0	0.00%	0	0.00%
Semi-Rural	0	0.00%	0	0.00%
Vacant Land	0	0.00%	0	0.00%
No Data	0	0.00%	0	0.00%
Total	82,998,314	100.00%	362	100.00%



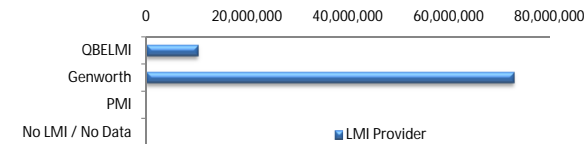
Arrears

Arrears Band	Balance	% Balance	Loan Count	% Loan Count
Current	82,260,273	99.11%	420	99.53%
1-30 days	188,955	0.23%	1	0.24%
31-60 days	549,087	0.66%	1	0.24%
61-90 days	0	0.00%	0	0.00%
91-120 days	0	0.00%	0	0.00%
121-150 days	0	0.00%	0	0.00%
151-180 days	0	0.00%	0	0.00%
181 days or more	0	0.00%	0	0.00%
Total	82,998,314	100.00%	422	100.00%



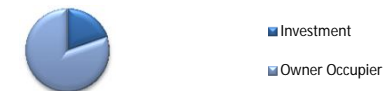
LMI Provider

LMI Provider	Balance	% Balance	Loan Count (Consol.)	% Loan Count
QBELMI	10,197,850	12.29%	44	12.15%
Genworth	72,800,465	87.71%	318	87.85%
PMI	0	0.00%	0	0.00%
No LMI / No Data	0	0.00%	0	0.00%
Total	82,998,314	100.00%	362	100.00%



Property Occupancy

Property Occupancy	Balance	% Balance	Loan Count	% Loan Count
Investment	16,350,583	19.70%	78	18.48%
Owner Occupier	66,647,731	80.30%	344	81.52%
Total	82,998,314	100.00%	422	100.00%



Default Statistics

Default Data	Amount	No. of Loans
Defaulted Loans	0.00	0.00
Loss on Sale	0.00	0.00
Claims on LMI	0.00	0.00
Claims paid by LMI	0.00	0.00
Claims Denied/Reduced	0.00	0.00
Loss covered by Excess Spread	0.00	N/A