

**AFG Series 2013-2  
Collateral Report**



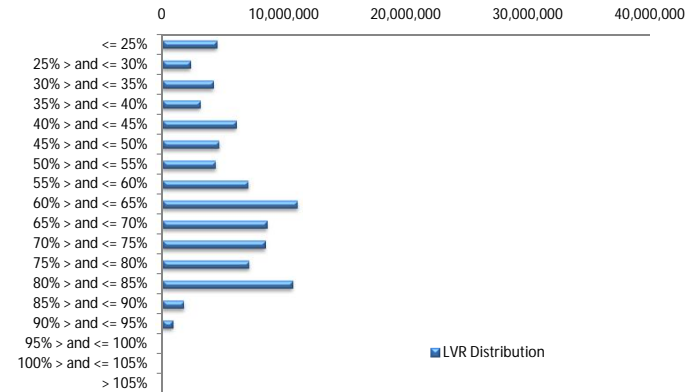
Model Period	44
Collection Period Start	01-Jun-17
Collection Period End	30-Jun-17
No. of Days	30
Interest Period Start	14-Jun-17
Interest Period End	13-Jul-17
No. of Days	30
Determination Date	11-Jul-17
Payment Date	14-Jul-17

**Pool Statistics**

Closing Balance of Mortgages	85,127,505
No. of Loans (Unconsolidated)	432
No. of Loans (Consolidated)	369
Average Loan Size (Unconsolidated)	197,054
Average Loan Size (Consolidated)	230,698
Largest Loan Size (Unconsolidated)	735,473
Largest Loan Size (Consolidated)	897,154
Smallest Loan Size (Unconsolidated)	(22,107)
Smallest Loan Size (Consolidated)	(22,107)
Weighted Average Interest Rate	4.44%
Weighted Average LVR	59.57%
Weighted Average Seasoning	54.57
Weighted Average Remaining Term	299.92

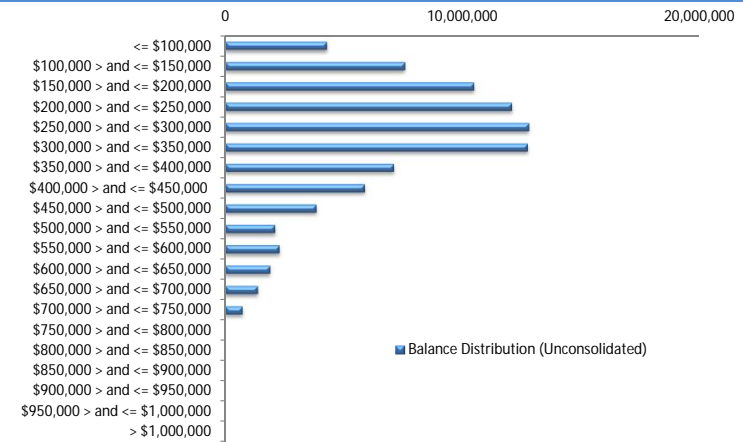
**LVR Distribution**

Current LTV	Balance	% Balance	Loan Count (Consol.)	% Loan Count
<= 25%	4,513,758	5.30%	82	22.22%
25% > and <= 30%	2,340,259	2.75%	17	4.61%
30% > and <= 35%	4,233,995	4.97%	20	5.42%
35% > and <= 40%	3,148,717	3.70%	16	4.34%
40% > and <= 45%	6,090,012	7.15%	24	6.50%
45% > and <= 50%	4,691,096	5.51%	21	5.69%
50% > and <= 55%	4,396,354	5.16%	14	3.79%
55% > and <= 60%	7,063,508	8.30%	22	5.96%
60% > and <= 65%	11,078,801	13.01%	40	10.84%
65% > and <= 70%	8,592,182	10.09%	28	7.59%
70% > and <= 75%	8,443,917	9.92%	25	6.78%
75% > and <= 80%	7,139,529	8.39%	20	5.42%
80% > and <= 85%	10,690,229	12.56%	32	8.67%
85% > and <= 90%	1,813,794	2.13%	6	1.63%
90% > and <= 95%	891,353	1.05%	2	0.54%
95% > and <= 100%	0	0.00%	0	0.00%
100% > and <= 105%	0	0.00%	0	0.00%
> 105%	0	0.00%	0	0.00%
<b>Total</b>	<b>85,127,505</b>	<b>100.00%</b>	<b>369</b>	<b>100.00%</b>



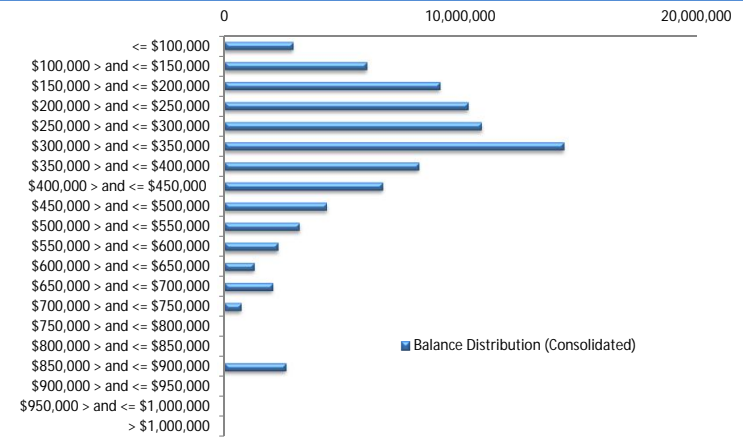
**Balance Distribution (Unconsolidated)**

Current Balance	Balance	% Balance	Loan Count	% Loan Count
<= \$100,000	4,279,838	5.03%	118	27.31%
\$100,000 > and <= \$150,000	7,572,922	8.90%	60	13.89%
\$150,000 > and <= \$200,000	10,477,202	12.31%	59	13.66%
\$200,000 > and <= \$250,000	12,072,070	14.18%	54	12.50%
\$250,000 > and <= \$300,000	12,781,794	15.01%	47	10.88%
\$300,000 > and <= \$350,000	12,736,813	14.96%	39	9.03%
\$350,000 > and <= \$400,000	7,099,247	8.34%	19	4.40%
\$400,000 > and <= \$450,000	5,878,950	6.91%	14	3.24%
\$450,000 > and <= \$500,000	3,836,499	4.51%	8	1.85%
\$500,000 > and <= \$550,000	2,098,220	2.46%	4	0.93%
\$550,000 > and <= \$600,000	2,288,370	2.69%	4	0.93%
\$600,000 > and <= \$650,000	1,893,081	2.22%	3	0.69%
\$650,000 > and <= \$700,000	1,377,026	1.62%	2	0.46%
\$700,000 > and <= \$750,000	735,473	0.86%	1	0.23%
\$750,000 > and <= \$800,000	0	0.00%	0	0.00%
\$800,000 > and <= \$850,000	0	0.00%	0	0.00%
\$850,000 > and <= \$900,000	0	0.00%	0	0.00%
\$900,000 > and <= \$950,000	0	0.00%	0	0.00%
\$950,000 > and <= \$1,000,000	0	0.00%	0	0.00%
> \$1,000,000	0	0.00%	0	0.00%
<b>Total</b>	<b>85,127,505</b>	<b>100.00%</b>	<b>432</b>	<b>100.00%</b>



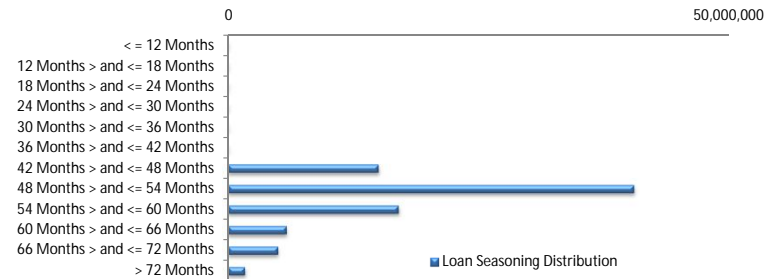
**Balance Distribution (Consolidated)**

Current Balance	Balance	% Balance	Loan Count (Consol.)	% Loan Count
<= \$100,000	2,926,750	3.44%	74	20.05%
\$100,000 > and <= \$150,000	6,035,934	7.09%	47	12.74%
\$150,000 > and <= \$200,000	9,125,573	10.72%	52	14.09%
\$200,000 > and <= \$250,000	10,317,098	12.12%	46	12.47%
\$250,000 > and <= \$300,000	10,884,181	12.79%	40	10.84%
\$300,000 > and <= \$350,000	14,351,284	16.86%	44	11.92%
\$350,000 > and <= \$400,000	8,241,842	9.68%	22	5.96%
\$400,000 > and <= \$450,000	6,705,724	7.88%	16	4.34%
\$450,000 > and <= \$500,000	4,353,461	5.11%	9	2.44%
\$500,000 > and <= \$550,000	3,198,398	3.76%	6	1.63%
\$550,000 > and <= \$600,000	2,283,313	2.69%	4	1.08%
\$600,000 > and <= \$650,000	1,274,296	1.50%	2	0.54%
\$650,000 > and <= \$700,000	2,071,291	2.43%	3	0.81%
\$700,000 > and <= \$750,000	735,473	0.86%	1	0.27%
\$750,000 > and <= \$800,000	0	0.00%	0	0.00%
\$800,000 > and <= \$850,000	0	0.00%	0	0.00%
\$850,000 > and <= \$900,000	2,622,889	3.08%	3	0.81%
\$900,000 > and <= \$950,000	0	0.00%	0	0.00%
\$950,000 > and <= \$1,000,000	0	0.00%	0	0.00%
> \$1,000,000	0	0.00%	0	0.00%
<b>Total</b>	<b>85,127,505</b>	<b>100.00%</b>	<b>369</b>	<b>100.00%</b>



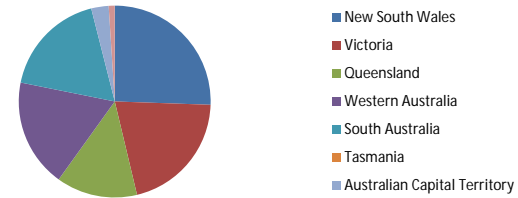
**Loan Seasoning Distribution**

Seasoning (Months)	Balance	% Balance	Loan Count	% Loan Count
<= 12 Months	0	0.00%	0	0.00%
12 Months > and <= 18 Months	0	0.00%	0	0.00%
18 Months > and <= 24 Months	0	0.00%	0	0.00%
24 Months > and <= 30 Months	0	0.00%	0	0.00%
30 Months > and <= 36 Months	0	0.00%	0	0.00%
36 Months > and <= 42 Months	0	0.00%	0	0.00%
42 Months > and <= 48 Months	15,017,001	17.64%	77	17.82%
48 Months > and <= 54 Months	40,540,222	47.62%	205	47.45%
54 Months > and <= 60 Months	17,026,303	20.00%	78	18.06%
60 Months > and <= 66 Months	5,857,701	6.88%	36	8.33%
66 Months > and <= 72 Months	5,007,576	5.88%	28	6.48%
> 72 Months	1,678,703	1.97%	8	1.85%
<b>Total</b>	<b>85,127,505</b>	<b>100.00%</b>	<b>432</b>	<b>100.00%</b>



### Geographic Distribution

Jurisdiction State	Balance	% Balance	Loan Count (Consol.)	% Loan Count
New South Wales	21,743,469	25.54%	96	26.02%
Victoria	17,629,118	20.71%	86	23.31%
Queensland	11,646,582	13.68%	49	13.28%
Western Australia	15,531,395	18.24%	51	13.82%
South Australia	15,216,211	17.87%	77	20.87%
Tasmania	(300)	0.00%	1	0.27%
Australian Capital Territory	2,491,892	2.93%	8	2.17%
Northern Territory	869,138	1.02%	1	0.27%
No Data	0	0.00%	0	0.00%
<b>Total</b>	<b>85,127,505</b>	<b>100.00%</b>	<b>369</b>	<b>100.00%</b>



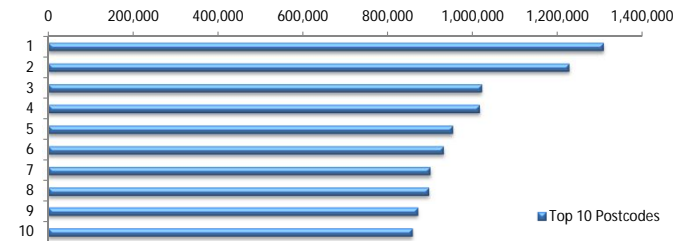
### Locality

S&P Category	Balance	% Balance	Loan Count (Consol.)	% Loan Count
Metro	70,199,216	82.46%	294	79.67%
Non Metro	13,869,051	16.29%	70	18.97%
Inner City	1,059,238	1.24%	5	1.36%
No Data	0	0.00%	0	0.00%
<b>Total</b>	<b>85,127,505</b>	<b>100.00%</b>	<b>369</b>	<b>100.00%</b>



### Top 10 Postcodes

Postcode	Balance	% Balance	Loan Count (Consol.)	% Loan Count
2031	1,308,683	1.54%	3	0.69%
2913	1,227,567	1.44%	4	0.93%
5114	1,021,756	1.20%	3	0.69%
6065	1,016,731	1.19%	2	0.46%
6030	953,684	1.12%	3	0.69%
2602	931,685	1.09%	3	0.69%
2170	900,219	1.06%	3	0.69%
6052	897,154	1.05%	1	0.23%
832	869,138	1.02%	1	0.23%
4179	856,597	1.01%	1	0.23%
<b>Total</b>	<b>9,983,212</b>	<b>11.73%</b>	<b>24</b>	<b>5.56%</b>



### Documentation

Document Type	Balance	% Balance	Loan Count	% Loan Count
Full Doc	85,127,505	100.00%	432	100.00%
Low Doc	0	0.00%	0	0.00%
No Doc	0	0.00%	0	0.00%
<b>Total</b>	<b>85,127,505</b>	<b>100.00%</b>	<b>432</b>	<b>100.00%</b>



### Rate Type

Rate Type	Balance	% Balance	Loan Count	% Loan Count
Variable Rate	85,127,505	100.00%	432	100.00%
Fixed Rate	0	0.00%	0	0.00%
<b>Total</b>	<b>85,127,505</b>	<b>100.00%</b>	<b>432</b>	<b>100.00%</b>



### Repayment Type

Repayment Type	Balance	% Balance	Loan Count	% Loan Count
Principal & Interest	70,102,941	82.35%	366	84.72%
Interest Only	14,256,332	16.75%	59	13.66%
Non-Billing	768,232	0.90%	7	1.62%
<b>Total</b>	<b>85,127,505</b>	<b>100.00%</b>	<b>432</b>	<b>100.00%</b>



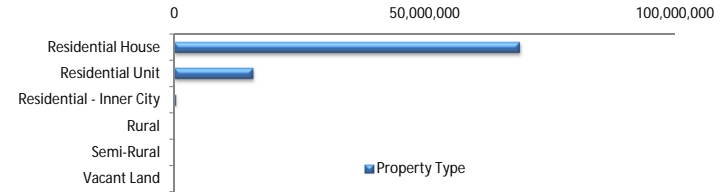
**Loan Type**

Product Category	Balance	% Balance	Loan Count	% Loan Count
Line of Credit	768,232	0.90%	7	1.62%
Term Loan	84,359,274	99.10%	425	98.38%
<b>Total</b>	<b>85,127,505</b>	<b>100.00%</b>	<b>432</b>	<b>100.00%</b>



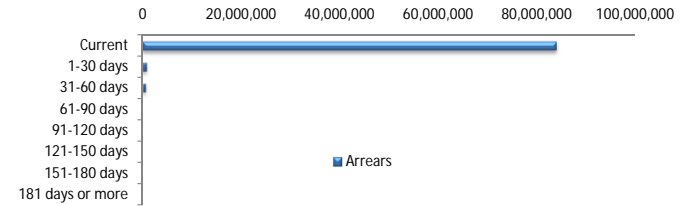
**Property Type**

Property Type	Balance	% Balance	Loan Count (Consol.)	% Loan Count
Residential House	69,117,436	81.19%	292	79.13%
Residential Unit	15,727,347	18.48%	75	20.33%
Residential - Inner City	282,721	0.33%	2	0.54%
Rural	0	0.00%	0	0.00%
Semi-Rural	0	0.00%	0	0.00%
Vacant Land	0	0.00%	0	0.00%
No Data	0	0.00%	0	0.00%
<b>Total</b>	<b>85,127,505</b>	<b>100.00%</b>	<b>369</b>	<b>100.00%</b>



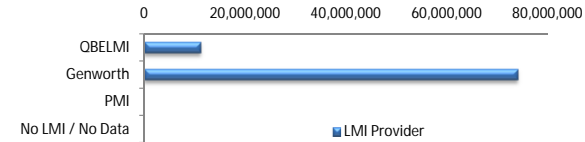
**Arrears**

Arrears Band	Balance	% Balance	Loan Count	% Loan Count
Current	83,834,351	98.48%	427	98.84%
1-30 days	743,959	0.87%	4	0.93%
31-60 days	549,195	0.65%	1	0.23%
61-90 days	0	0.00%	0	0.00%
91-120 days	0	0.00%	0	0.00%
121-150 days	0	0.00%	0	0.00%
151-180 days	0	0.00%	0	0.00%
181 days or more	0	0.00%	0	0.00%
<b>Total</b>	<b>85,127,505</b>	<b>100.00%</b>	<b>432</b>	<b>100.00%</b>



**LMI Provider**

LMI Provider	Balance	% Balance	Loan Count (Consol.)	% Loan Count
QBELMI	11,170,694	13.12%	46	12.47%
Genworth	73,956,812	86.88%	323	87.53%
PMI	0	0.00%	0	0.00%
No LMI / No Data	0	0.00%	0	0.00%
<b>Total</b>	<b>85,127,505</b>	<b>100.00%</b>	<b>369</b>	<b>100.00%</b>



**Property Occupancy**

Property Occupancy	Balance	% Balance	Loan Count	% Loan Count
Investment	16,946,325	19.91%	83	19.21%
Owner Occupier	68,181,181	80.09%	349	80.79%
<b>Total</b>	<b>85,127,505</b>	<b>100.00%</b>	<b>432</b>	<b>100.00%</b>



**Default Statistics**

Default Data	Amount	No. of Loans
Defaulted Loans	0.00	0.00
Loss on Sale	0.00	0.00
Claims on LMI	0.00	0.00
Claims paid by LMI	0.00	0.00
Claims Denied/Reduced	0.00	0.00
Loss covered by Excess Spread	0.00	N/A