

**AFG Series 2013-2
Collateral Report**



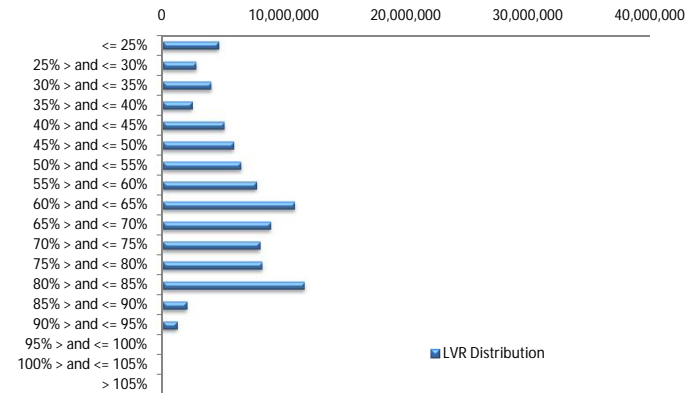
Model Period	42
Collection Period Start	01-Apr-17
Collection Period End	30-Apr-17
No. of Days	30
Interest Period Start	18-Apr-17
Interest Period End	14-May-17
No. of Days	27
Determination Date	10-May-17
Payment Date	15-May-17

Pool Statistics

Closing Balance of Mortgages	90,145,615
No. of Loans (Unconsolidated)	448
No. of Loans (Consolidated)	387
Average Loan Size (Unconsolidated)	201,218
Average Loan Size (Consolidated)	232,934
Largest Loan Size (Unconsolidated)	735,385
Largest Loan Size (Consolidated)	900,205
Smallest Loan Size (Unconsolidated)	(42,149)
Smallest Loan Size (Consolidated)	(18,507)
Weighted Average Interest Rate	4.42%
Weighted Average LVR	60.13%
Weighted Average Seasoning	52.46
Weighted Average Remaining Term	302.04

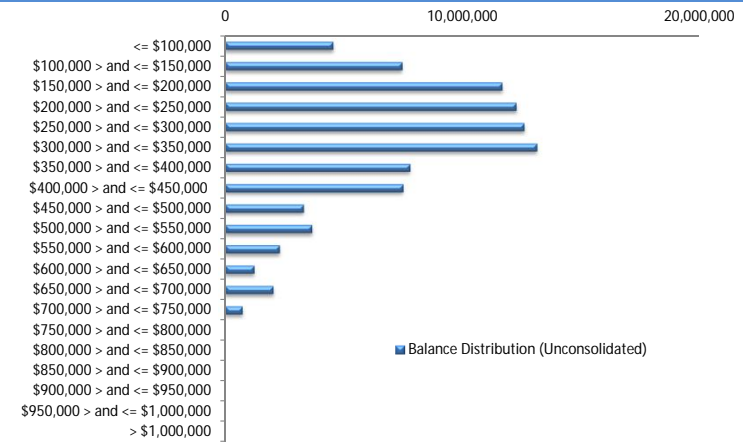
LVR Distribution

Current LTV	Balance	% Balance	Loan Count (Consol.)	% Loan Count
<= 25%	4,639,044	5.15%	88	22.74%
25% > and <= 30%	2,811,252	3.12%	19	4.91%
30% > and <= 35%	4,048,785	4.49%	20	5.17%
35% > and <= 40%	2,484,407	2.76%	12	3.10%
40% > and <= 45%	5,109,238	5.67%	20	5.17%
45% > and <= 50%	5,880,580	6.52%	27	6.98%
50% > and <= 55%	6,474,468	7.18%	19	4.91%
55% > and <= 60%	7,741,225	8.59%	24	6.20%
60% > and <= 65%	10,865,844	12.05%	38	9.82%
65% > and <= 70%	8,910,787	9.88%	28	7.24%
70% > and <= 75%	8,003,375	8.88%	24	6.20%
75% > and <= 80%	8,220,403	9.12%	23	5.94%
80% > and <= 85%	11,669,833	12.95%	35	9.04%
85% > and <= 90%	2,040,360	2.26%	7	1.81%
90% > and <= 95%	1,246,014	1.38%	3	0.78%
95% > and <= 100%	0	0.00%	0	0.00%
100% > and <= 105%	0	0.00%	0	0.00%
> 105%	0	0.00%	0	0.00%
Total	90,145,615	100.00%	387	100.00%



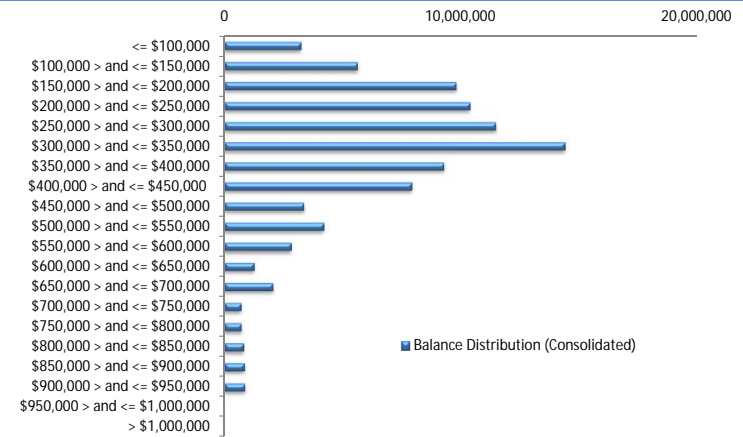
Balance Distribution (Unconsolidated)

Current Balance	Balance	% Balance	Loan Count	% Loan Count
<= \$100,000	4,544,359	5.04%	120	26.79%
\$100,000 > and <= \$150,000	7,451,517	8.27%	59	13.17%
\$150,000 > and <= \$200,000	11,661,296	12.94%	66	14.73%
\$200,000 > and <= \$250,000	12,246,016	13.58%	54	12.05%
\$250,000 > and <= \$300,000	12,586,986	13.96%	46	10.27%
\$300,000 > and <= \$350,000	13,120,979	14.56%	40	8.93%
\$350,000 > and <= \$400,000	7,778,411	8.63%	21	4.69%
\$400,000 > and <= \$450,000	7,494,810	8.31%	18	4.02%
\$450,000 > and <= \$500,000	3,307,699	3.67%	7	1.56%
\$500,000 > and <= \$550,000	3,659,555	4.06%	7	1.56%
\$550,000 > and <= \$600,000	2,295,989	2.55%	4	0.89%
\$600,000 > and <= \$650,000	1,231,583	1.37%	2	0.45%
\$650,000 > and <= \$700,000	2,031,031	2.25%	3	0.67%
\$700,000 > and <= \$750,000	735,385	0.82%	1	0.22%
\$750,000 > and <= \$800,000	0	0.00%	0	0.00%
\$800,000 > and <= \$850,000	0	0.00%	0	0.00%
\$850,000 > and <= \$900,000	0	0.00%	0	0.00%
\$900,000 > and <= \$950,000	0	0.00%	0	0.00%
\$950,000 > and <= \$1,000,000	0	0.00%	0	0.00%
> \$1,000,000	0	0.00%	0	0.00%
Total	90,145,615	100.00%	448	100.00%



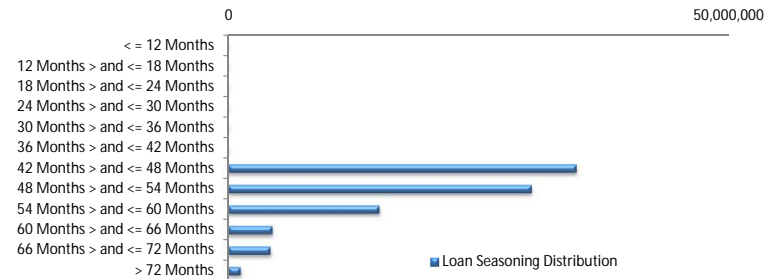
Balance Distribution (Consolidated)

Current Balance	Balance	% Balance	Loan Count (Consol.)	% Loan Count
<= \$100,000	3,255,467	3.61%	81	20.93%
\$100,000 > and <= \$150,000	5,659,107	6.28%	44	11.37%
\$150,000 > and <= \$200,000	9,813,374	10.89%	56	14.47%
\$200,000 > and <= \$250,000	10,395,150	11.53%	46	11.89%
\$250,000 > and <= \$300,000	11,486,370	12.74%	42	10.85%
\$300,000 > and <= \$350,000	14,394,103	15.97%	44	11.37%
\$350,000 > and <= \$400,000	9,299,031	10.32%	25	6.46%
\$400,000 > and <= \$450,000	7,929,105	8.80%	19	4.91%
\$450,000 > and <= \$500,000	3,381,339	3.75%	7	1.81%
\$500,000 > and <= \$550,000	4,223,485	4.69%	8	2.07%
\$550,000 > and <= \$600,000	2,851,317	3.16%	5	1.29%
\$600,000 > and <= \$650,000	1,275,160	1.41%	2	0.52%
\$650,000 > and <= \$700,000	2,079,129	2.31%	3	0.78%
\$700,000 > and <= \$750,000	735,385	0.82%	1	0.26%
\$750,000 > and <= \$800,000	752,618	0.83%	1	0.26%
\$800,000 > and <= \$850,000	846,253	0.94%	1	0.26%
\$850,000 > and <= \$900,000	869,017	0.96%	1	0.26%
\$900,000 > and <= \$950,000	900,205	1.00%	1	0.26%
\$950,000 > and <= \$1,000,000	0	0.00%	0	0.00%
> \$1,000,000	0	0.00%	0	0.00%
Total	90,145,615	100.00%	387	100.00%



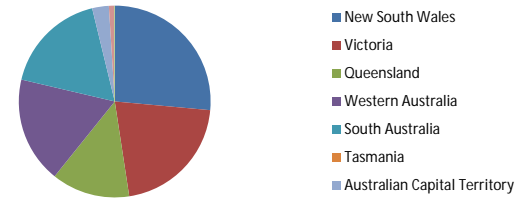
Loan Seasoning Distribution

Seasoning (Months)	Balance	% Balance	Loan Count	% Loan Count
<= 12 Months	0	0.00%	0	0.00%
12 Months > and <= 18 Months	0	0.00%	0	0.00%
18 Months > and <= 24 Months	0	0.00%	0	0.00%
24 Months > and <= 30 Months	0	0.00%	0	0.00%
30 Months > and <= 36 Months	0	0.00%	0	0.00%
36 Months > and <= 42 Months	0	0.00%	0	0.00%
42 Months > and <= 48 Months	34,780,996	38.58%	171	38.17%
48 Months > and <= 54 Months	30,322,148	33.64%	154	34.38%
54 Months > and <= 60 Months	15,106,386	16.76%	68	15.18%
60 Months > and <= 66 Months	4,439,018	4.92%	26	5.80%
66 Months > and <= 72 Months	4,232,260	4.69%	23	5.13%
> 72 Months	1,264,807	1.40%	6	1.34%
Total	90,145,615	100.00%	448	100.00%



Geographic Distribution

Jurisdiction State	Balance	% Balance	Loan Count (Consol.)	% Loan Count
New South Wales	23,834,516	26.44%	101	26.10%
Victoria	19,068,996	21.15%	91	23.51%
Queensland	11,871,067	13.17%	50	12.92%
Western Australia	16,145,354	17.91%	53	13.70%
South Australia	15,813,807	17.54%	81	20.93%
Tasmania	(300)	0.00%	1	0.26%
Australian Capital Territory	2,543,157	2.82%	9	2.33%
Northern Territory	869,017	0.96%	1	0.26%
No Data	0	0.00%	0	0.00%
Total	90,145,615	100.00%	387	100.00%



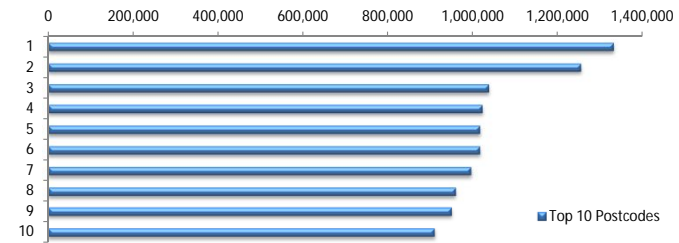
Locality

S&P Category	Balance	% Balance	Loan Count (Consol.)	% Loan Count
Metro	74,320,042	82.44%	308	79.59%
Non Metro	14,943,846	16.58%	74	19.12%
Inner City	881,727	0.98%	5	1.29%
No Data	0	0.00%	0	0.00%
Total	90,145,615	100.00%	387	100.00%



Top 10 Postcodes

Postcode	Balance	% Balance	Loan Count (Consol.)	% Loan Count
2031	1,331,398	1.48%	3	0.67%
2913	1,254,236	1.39%	5	1.12%
2193	1,037,711	1.15%	2	0.45%
2216	1,022,488	1.13%	2	0.45%
6065	1,016,736	1.13%	2	0.45%
5114	1,016,516	1.13%	3	0.67%
2260	995,542	1.10%	4	0.89%
6030	959,759	1.06%	3	0.67%
2602	948,795	1.05%	3	0.67%
2170	908,672	1.01%	3	0.67%
Total	10,491,853	11.64%	30	6.70%



Documentation

Document Type	Balance	% Balance	Loan Count	% Loan Count
Full Doc	90,145,615	100.00%	448	100.00%
Low Doc	0	0.00%	0	0.00%
No Doc	0	0.00%	0	0.00%
Total	90,145,615	100.00%	448	100.00%



Rate Type

Rate Type	Balance	% Balance	Loan Count	% Loan Count
Variable Rate	90,145,615	100.00%	448	100.00%
Fixed Rate	0	0.00%	0	0.00%
Total	90,145,615	100.00%	448	100.00%



Repayment Type

Repayment Type	Balance	% Balance	Loan Count	% Loan Count
Principal & Interest	73,317,681	81.33%	371	82.81%
Interest Only	16,054,171	17.81%	69	15.40%
Non-Billing	773,763	0.86%	8	1.79%
Total	90,145,615	100.00%	448	100.00%



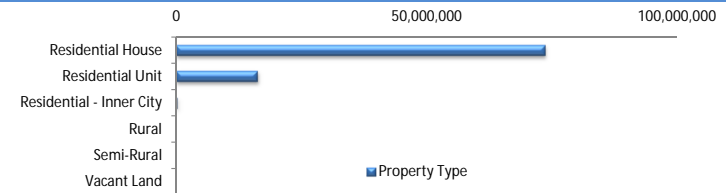
Loan Type

Product Category	Balance	% Balance	Loan Count	% Loan Count
Line of Credit	773,763	0.86%	8	1.79%
Term Loan	89,371,852	99.14%	440	98.21%
Total	90,145,615	100.00%	448	100.00%



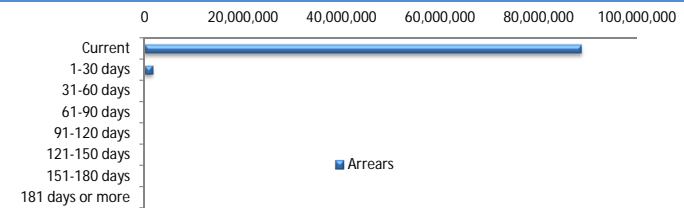
Property Type

Property Type	Balance	% Balance	Loan Count (Consol.)	% Loan Count
Residential House	73,774,458	81.84%	307	79.33%
Residential Unit	16,168,735	17.94%	78	20.16%
Residential - Inner City	202,422	0.22%	2	0.52%
Rural	0	0.00%	0	0.00%
Semi-Rural	0	0.00%	0	0.00%
Vacant Land	0	0.00%	0	0.00%
No Data	0	0.00%	0	0.00%
Total	90,145,615	100.00%	387	100.00%



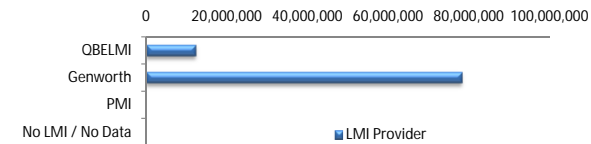
Arrears

Arrears Band	Balance	% Balance	Loan Count	% Loan Count
Current	88,462,142	98.13%	443	98.88%
1-30 days	1,683,473	1.87%	5	1.12%
31-60 days	0	0.00%	0	0.00%
61-90 days	0	0.00%	0	0.00%
91-120 days	0	0.00%	0	0.00%
121-150 days	0	0.00%	0	0.00%
151-180 days	0	0.00%	0	0.00%
181 days or more	0	0.00%	0	0.00%
Total	90,145,615	100.00%	448	100.00%



LMI Provider

LMI Provider	Balance	% Balance	Loan Count (Consol.)	% Loan Count
QBELMI	12,010,040	13.32%	49	12.66%
Genworth	78,135,575	86.68%	338	87.34%
PMI	0	0.00%	0	0.00%
No LMI / No Data	0	0.00%	0	0.00%
Total	90,145,615	100.00%	387	100.00%



Property Occupancy

Property Occupancy	Balance	% Balance	Loan Count	% Loan Count
Investment	18,266,588	20.26%	88	19.64%
Owner Occupier	71,879,027	79.74%	360	80.36%
Total	90,145,615	100.00%	448	100.00%



Default Statistics

Default Data	Amount	No. of Loans
Defaulted Loans	0.00	0.00
Loss on Sale	0.00	0.00
Claims on LMI	0.00	0.00
Claims paid by LMI	0.00	0.00
Claims Denied/Reduced	0.00	0.00
Loss covered by Excess Spread	0.00	N/A