

**AFG Series 2013-2  
Collateral Report**



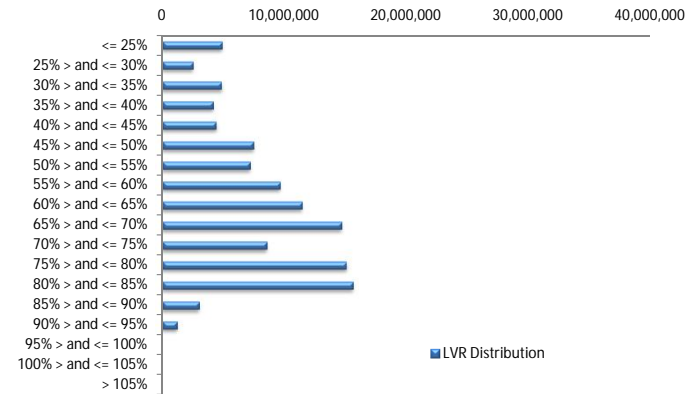
Model Period	33
Collection Period Start	01-Jul-16
Collection Period End	31-Jul-16
No. of Days	31
Interest Period Start	14-Jul-16
Interest Period End	14-Aug-16
No. of Days	32
Determination Date	10-Aug-16
Payment Date	15-Aug-16

**Pool Statistics**

Closing Balance of Mortgages	115,431,265
No. of Loans (Unconsolidated)	538
No. of Loans (Consolidated)	458
Average Loan Size (Unconsolidated)	214,556
Average Loan Size (Consolidated)	252,033
Largest Loan Size (Unconsolidated)	748,262
Largest Loan Size (Consolidated)	914,173
Smallest Loan Size (Unconsolidated)	(2,907)
Smallest Loan Size (Consolidated)	0
Weighted Average Interest Rate	4.44%
Weighted Average LVR	61.74%
Weighted Average Seasoning	43.61
Weighted Average Remaining Term	309.60

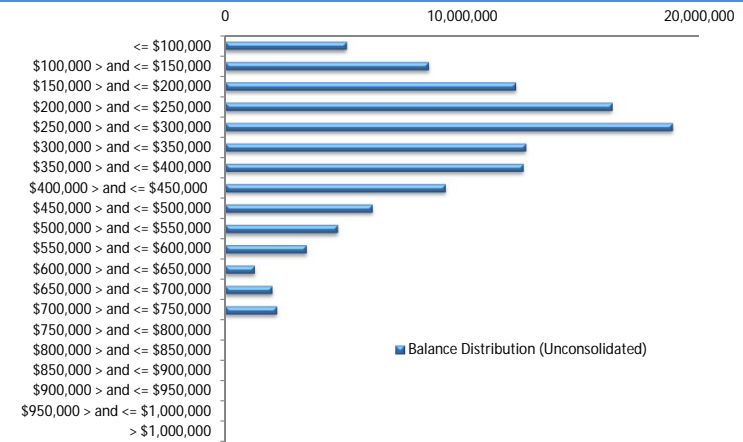
**LVR Distribution**

Current LTV	Balance	% Balance	Loan Count (Consol.)	% Loan Count
<= 25%	4,952,261	4.29%	82	17.90%
25% > and <= 30%	2,579,899	2.24%	21	4.59%
30% > and <= 35%	4,890,923	4.24%	26	5.68%
35% > and <= 40%	4,206,787	3.64%	20	4.37%
40% > and <= 45%	4,452,042	3.86%	18	3.93%
45% > and <= 50%	7,513,110	6.51%	31	6.77%
50% > and <= 55%	7,232,890	6.27%	26	5.68%
55% > and <= 60%	9,699,822	8.40%	28	6.11%
60% > and <= 65%	11,496,771	9.96%	36	7.86%
65% > and <= 70%	14,726,447	12.76%	43	9.39%
70% > and <= 75%	8,603,655	7.45%	26	5.68%
75% > and <= 80%	15,115,028	13.09%	42	9.17%
80% > and <= 85%	15,657,797	13.56%	45	9.83%
85% > and <= 90%	3,061,587	2.65%	11	2.40%
90% > and <= 95%	1,242,246	1.08%	3	0.66%
95% > and <= 100%	0	0.00%	0	0.00%
100% > and <= 105%	0	0.00%	0	0.00%
> 105%	0	0.00%	0	0.00%
<b>Total</b>	<b>115,431,265</b>	<b>100.00%</b>	<b>458</b>	<b>100.00%</b>



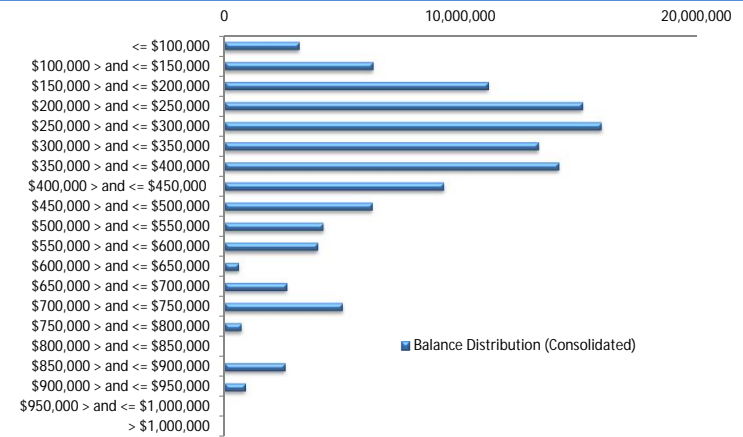
**Balance Distribution (Unconsolidated)**

Current Balance	Balance	% Balance	Loan Count	% Loan Count
<= \$100,000	5,122,807	4.44%	128	23.79%
\$100,000 > and <= \$150,000	8,577,155	7.43%	68	12.64%
\$150,000 > and <= \$200,000	12,249,527	10.61%	69	12.83%
\$200,000 > and <= \$250,000	16,307,754	14.13%	73	13.57%
\$250,000 > and <= \$300,000	18,845,788	16.33%	69	12.83%
\$300,000 > and <= \$350,000	12,674,976	10.98%	39	7.25%
\$350,000 > and <= \$400,000	12,563,464	10.88%	34	6.32%
\$400,000 > and <= \$450,000	9,284,877	8.04%	22	4.09%
\$450,000 > and <= \$500,000	6,204,001	5.37%	13	2.42%
\$500,000 > and <= \$550,000	4,745,546	4.11%	9	1.67%
\$550,000 > and <= \$600,000	3,429,643	2.97%	6	1.12%
\$600,000 > and <= \$650,000	1,244,960	1.08%	2	0.37%
\$650,000 > and <= \$700,000	1,990,443	1.72%	3	0.56%
\$700,000 > and <= \$750,000	2,190,323	1.90%	3	0.56%
\$750,000 > and <= \$800,000	0	0.00%	0	0.00%
\$800,000 > and <= \$850,000	0	0.00%	0	0.00%
\$850,000 > and <= \$900,000	0	0.00%	0	0.00%
\$900,000 > and <= \$950,000	0	0.00%	0	0.00%
\$950,000 > and <= \$1,000,000	0	0.00%	0	0.00%
> \$1,000,000	0	0.00%	0	0.00%
<b>Total</b>	<b>115,431,265</b>	<b>100.00%</b>	<b>538</b>	<b>100.00%</b>



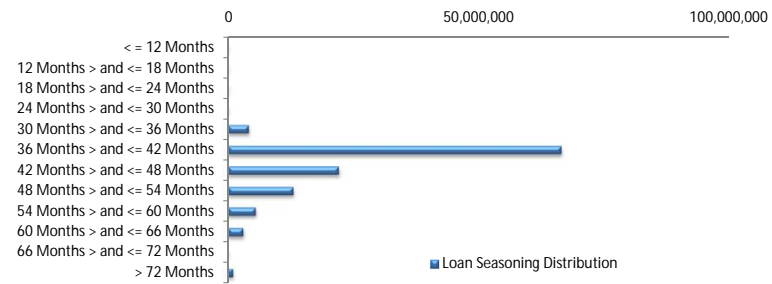
**Balance Distribution (Consolidated)**

Current Balance	Balance	% Balance	Loan Count (Consol.)	% Loan Count
<= \$100,000	3,188,203	2.76%	74	16.16%
\$100,000 > and <= \$150,000	6,290,477	5.45%	50	10.92%
\$150,000 > and <= \$200,000	11,167,662	9.67%	63	13.76%
\$200,000 > and <= \$250,000	15,144,466	13.12%	67	14.63%
\$250,000 > and <= \$300,000	15,939,192	13.81%	58	12.66%
\$300,000 > and <= \$350,000	13,280,793	11.51%	41	8.95%
\$350,000 > and <= \$400,000	14,132,303	12.24%	38	8.30%
\$400,000 > and <= \$450,000	9,287,888	8.05%	22	4.80%
\$450,000 > and <= \$500,000	6,267,209	5.43%	13	2.84%
\$500,000 > and <= \$550,000	4,201,711	3.64%	8	1.75%
\$550,000 > and <= \$600,000	3,969,661	3.44%	7	1.53%
\$600,000 > and <= \$650,000	634,186	0.55%	1	0.22%
\$650,000 > and <= \$700,000	2,656,721	2.30%	4	0.87%
\$700,000 > and <= \$750,000	5,014,923	4.34%	7	1.53%
\$750,000 > and <= \$800,000	752,953	0.65%	1	0.22%
\$800,000 > and <= \$850,000	0	0.00%	0	0.00%
\$850,000 > and <= \$900,000	2,588,743	2.24%	3	0.66%
\$900,000 > and <= \$950,000	914,173	0.79%	1	0.22%
\$950,000 > and <= \$1,000,000	0	0.00%	0	0.00%
> \$1,000,000	0	0.00%	0	0.00%
<b>Total</b>	<b>115,431,265</b>	<b>100.00%</b>	<b>458</b>	<b>100.00%</b>



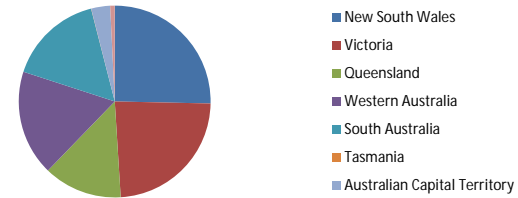
**Loan Seasoning Distribution**

Seasoning (Months)	Balance	% Balance	Loan Count	% Loan Count
<= 12 Months	0	0.00%	0	0.00%
12 Months > and <= 18 Months	0	0.00%	0	0.00%
18 Months > and <= 24 Months	0	0.00%	0	0.00%
24 Months > and <= 30 Months	0	0.00%	0	0.00%
30 Months > and <= 36 Months	4,162,180	3.61%	30	5.58%
36 Months > and <= 42 Months	66,563,650	57.67%	303	56.32%
42 Months > and <= 48 Months	22,123,534	19.17%	96	17.84%
48 Months > and <= 54 Months	13,056,608	11.31%	64	11.90%
54 Months > and <= 60 Months	5,511,410	4.77%	26	4.83%
60 Months > and <= 66 Months	3,036,583	2.63%	14	2.60%
66 Months > and <= 72 Months	0	0.00%	0	0.00%
> 72 Months	977,300	0.85%	5	0.93%
<b>Total</b>	<b>115,431,265</b>	<b>100.00%</b>	<b>538</b>	<b>100.00%</b>



### Geographic Distribution

Jurisdiction State	Balance	% Balance	Loan Count (Consol.)	% Loan Count
New South Wales	29,223,895	25.32%	114	24.89%
Victoria	27,360,221	23.70%	115	25.11%
Queensland	15,254,557	13.22%	60	13.10%
Western Australia	20,515,985	17.77%	63	13.76%
South Australia	18,479,731	16.01%	92	20.09%
Tasmania	27,613	0.02%	1	0.22%
Australian Capital Territory	3,700,564	3.21%	12	2.62%
Northern Territory	868,699	0.75%	1	0.22%
No Data	0	0.00%	0	0.00%
<b>Total</b>	<b>115,431,265</b>	<b>100.00%</b>	<b>458</b>	<b>100.00%</b>



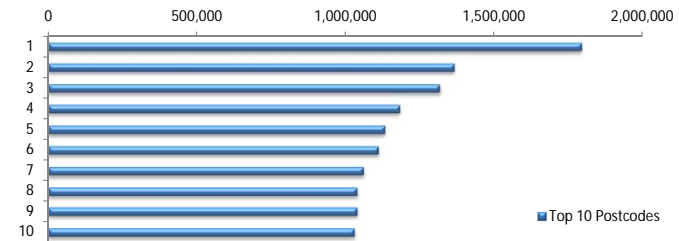
### Locality

S&P Category	Balance	% Balance	Loan Count (Consol.)	% Loan Count
Metro	95,865,983	83.05%	367	80.13%
Non Metro	18,013,216	15.61%	85	18.56%
Inner City	1,552,065	1.34%	6	1.31%
No Data	0	0.00%	0	0.00%
<b>Total</b>	<b>115,431,265</b>	<b>100.00%</b>	<b>458</b>	<b>100.00%</b>



### Top 10 Postcodes

Postcode	Balance	% Balance	Loan Count (Consol.)	% Loan Count
6030	1,793,281	1.55%	4	0.74%
2031	1,365,643	1.18%	3	0.56%
2913	1,316,354	1.14%	5	0.93%
6164	1,182,339	1.02%	3	0.56%
3132	1,132,274	0.98%	3	0.56%
2170	1,110,060	0.96%	4	0.74%
2193	1,060,437	0.92%	2	0.37%
6065	1,038,286	0.90%	2	0.37%
5114	1,038,267	0.90%	3	0.56%
2216	1,029,024	0.89%	2	0.37%
<b>Total</b>	<b>12,065,966</b>	<b>10.45%</b>	<b>31</b>	<b>5.76%</b>



### Documentation

Document Type	Balance	% Balance	Loan Count	% Loan Count
Full Doc	115,431,265	100.00%	538	100.00%
Low Doc	0	0.00%	0	0.00%
No Doc	0	0.00%	0	0.00%
<b>Total</b>	<b>115,431,265</b>	<b>100.00%</b>	<b>538</b>	<b>100.00%</b>



### Rate Type

Rate Type	Balance	% Balance	Loan Count	% Loan Count
Variable Rate	115,431,265	100.00%	538	100.00%
Fixed Rate	0	0.00%	0	0.00%
<b>Total</b>	<b>115,431,265</b>	<b>100.00%</b>	<b>538</b>	<b>100.00%</b>



### Repayment Type

Repayment Type	Balance	% Balance	Loan Count	% Loan Count
Principal & Interest	92,085,650	79.78%	433	80.48%
Interest Only	22,523,739	19.51%	95	17.66%
Non-Billing	821,876	0.71%	10	1.86%
<b>Total</b>	<b>115,431,265</b>	<b>100.00%</b>	<b>538</b>	<b>100.00%</b>



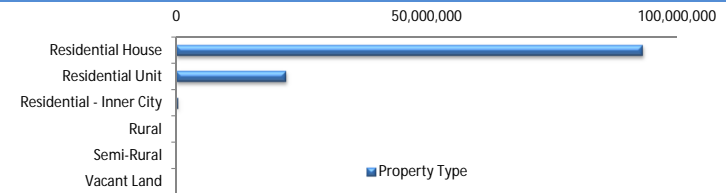
### Loan Type

Product Category	Balance	% Balance	Loan Count	% Loan Count
Line of Credit	821,876	0.71%	10	1.86%
Term Loan	114,609,388	99.29%	528	98.14%
<b>Total</b>	<b>115,431,265</b>	<b>100.00%</b>	<b>538</b>	<b>100.00%</b>



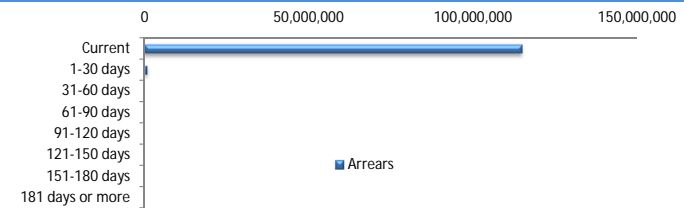
### Property Type

Property Type	Balance	% Balance	Loan Count (Consol.)	% Loan Count
Residential House	93,101,774	80.66%	363	79.26%
Residential Unit	21,994,890	19.05%	92	20.09%
Residential - Inner City	300,411	0.26%	2	0.44%
Rural	34,189	0.03%	1	0.22%
Semi-Rural	0	0.00%	0	0.00%
Vacant Land	0	0.00%	0	0.00%
No Data	0	0.00%	0	0.00%
<b>Total</b>	<b>115,431,265</b>	<b>100.00%</b>	<b>458</b>	<b>100.00%</b>



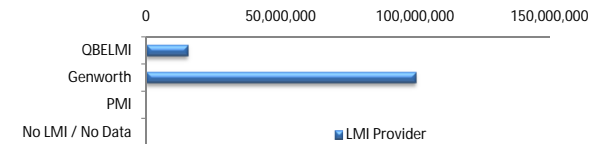
### Arrears

Arrears Band	Balance	% Balance	Loan Count	% Loan Count
Current	114,704,940	99.37%	535	99.44%
1-30 days	726,324	0.63%	3	0.56%
31-60 days	0	0.00%	0	0.00%
61-90 days	0	0.00%	0	0.00%
91-120 days	0	0.00%	0	0.00%
121-150 days	0	0.00%	0	0.00%
151-180 days	0	0.00%	0	0.00%
181 days or more	0	0.00%	0	0.00%
<b>Total</b>	<b>115,431,265</b>	<b>100.00%</b>	<b>538</b>	<b>100.00%</b>



### LMI Provider

LMI Provider	Balance	% Balance	Loan Count (Consol.)	% Loan Count
QBELMI	15,213,463	13.18%	55	12.01%
Genworth	100,217,802	86.82%	403	87.99%
PMI	0	0.00%	0	0.00%
No LMI / No Data	0	0.00%	0	0.00%
<b>Total</b>	<b>115,431,265</b>	<b>100.00%</b>	<b>458</b>	<b>100.00%</b>



### Property Occupancy

Property Occupancy	Balance	% Balance	Loan Count	% Loan Count
Investment	24,744,291	21.44%	113	21.00%
Owner Occupier	90,686,974	78.56%	425	79.00%
<b>Total</b>	<b>115,431,265</b>	<b>100.00%</b>	<b>538</b>	<b>100.00%</b>



### Default Statistics

Default Data	Amount	No. of Loans
Defaulted Loans	0.00	0.00
Loss on Sale	0.00	0.00
Claims on LMI	0.00	0.00
Claims paid by LMI	0.00	0.00
Claims Denied/Reduced	0.00	0.00
Loss covered by Excess Spread	0.00	N/A