

**AFG Series 2013-2
Collateral Report**



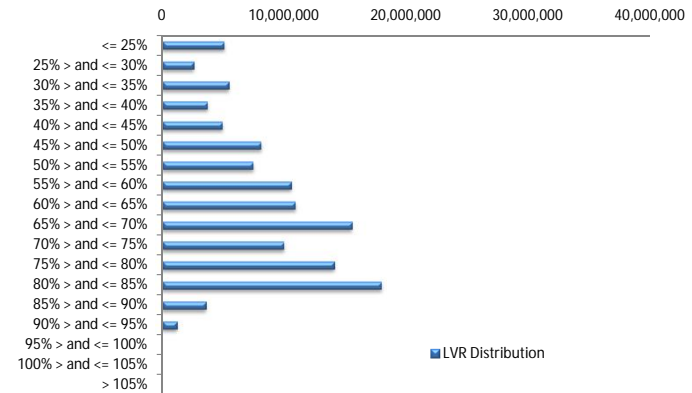
Model Period	31
Collection Period Start	01-May-16
Collection Period End	31-May-16
No. of Days	31
Interest Period Start	16-May-16
Interest Period End	13-Jun-16
No. of Days	29
Determination Date	08-Jun-16
Payment Date	14-Jun-16

Pool Statistics

Closing Balance of Mortgages	121,717,802
No. of Loans (Unconsolidated)	576
No. of Loans (Consolidated)	475
Average Loan Size (Unconsolidated)	211,316
Average Loan Size (Consolidated)	256,248
Largest Loan Size (Unconsolidated)	754,880
Largest Loan Size (Consolidated)	912,278
Smallest Loan Size (Unconsolidated)	(2,445)
Smallest Loan Size (Consolidated)	(2,445)
Weighted Average Interest Rate	4.45%
Weighted Average LVR	61.97%
Weighted Average Seasoning	41.63
Weighted Average Remaining Term	312.02

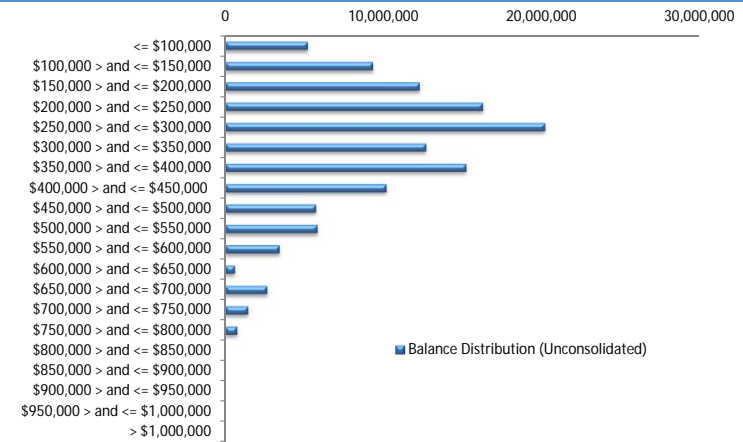
LVR Distribution

Current LTV	Balance	% Balance	Loan Count (Consol.)	% Loan Count
<= 25%	5,114,363	4.20%	79	16.63%
25% > and <= 30%	2,633,922	2.16%	20	4.21%
30% > and <= 35%	5,490,285	4.51%	28	5.89%
35% > and <= 40%	3,761,767	3.09%	20	4.21%
40% > and <= 45%	4,984,034	4.09%	20	4.21%
45% > and <= 50%	8,140,700	6.69%	32	6.74%
50% > and <= 55%	7,490,968	6.15%	29	6.11%
55% > and <= 60%	10,594,759	8.70%	30	6.32%
60% > and <= 65%	10,929,576	8.98%	34	7.16%
65% > and <= 70%	15,590,318	12.81%	46	9.68%
70% > and <= 75%	10,021,349	8.23%	31	6.53%
75% > and <= 80%	14,126,419	11.61%	39	8.21%
80% > and <= 85%	17,977,947	14.77%	51	10.74%
85% > and <= 90%	3,618,836	2.97%	13	2.74%
90% > and <= 95%	1,242,559	1.02%	3	0.63%
95% > and <= 100%	0	0.00%	0	0.00%
100% > and <= 105%	0	0.00%	0	0.00%
> 105%	0	0.00%	0	0.00%
Total	121,717,802	100.00%	475	100.00%



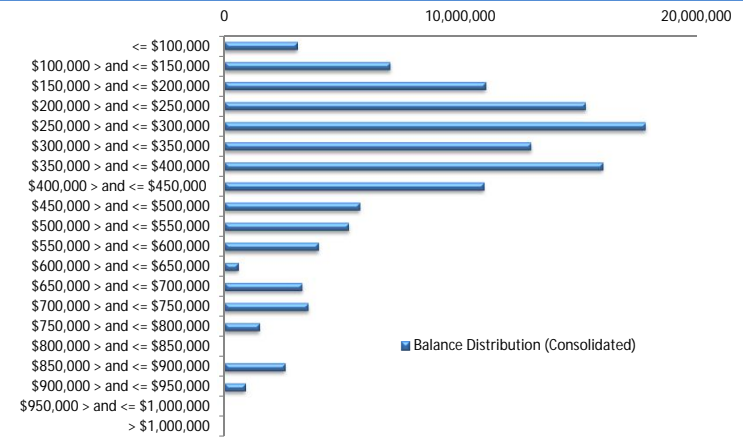
Balance Distribution (Unconsolidated)

Current Balance	Balance	% Balance	Loan Count	% Loan Count
<= \$100,000	5,219,983	4.29%	145	25.17%
\$100,000 > and <= \$150,000	9,324,684	7.66%	73	12.67%
\$150,000 > and <= \$200,000	12,269,090	10.08%	70	12.15%
\$200,000 > and <= \$250,000	16,248,970	13.35%	73	12.67%
\$250,000 > and <= \$300,000	20,175,185	16.58%	74	12.85%
\$300,000 > and <= \$350,000	12,668,140	10.41%	39	6.77%
\$350,000 > and <= \$400,000	15,207,890	12.49%	41	7.12%
\$400,000 > and <= \$450,000	10,169,575	8.36%	24	4.17%
\$450,000 > and <= \$500,000	5,720,903	4.70%	12	2.08%
\$500,000 > and <= \$550,000	5,819,155	4.78%	11	1.91%
\$550,000 > and <= \$600,000	3,431,201	2.82%	6	1.04%
\$600,000 > and <= \$650,000	609,875	0.50%	1	0.17%
\$650,000 > and <= \$700,000	2,653,292	2.18%	4	0.69%
\$700,000 > and <= \$750,000	1,444,979	1.19%	2	0.35%
\$750,000 > and <= \$800,000	754,880	0.62%	1	0.17%
\$800,000 > and <= \$850,000	0	0.00%	0	0.00%
\$850,000 > and <= \$900,000	0	0.00%	0	0.00%
\$900,000 > and <= \$950,000	0	0.00%	0	0.00%
\$950,000 > and <= \$1,000,000	0	0.00%	0	0.00%
> \$1,000,000	0	0.00%	0	0.00%
Total	121,717,802	100.00%	576	100.00%



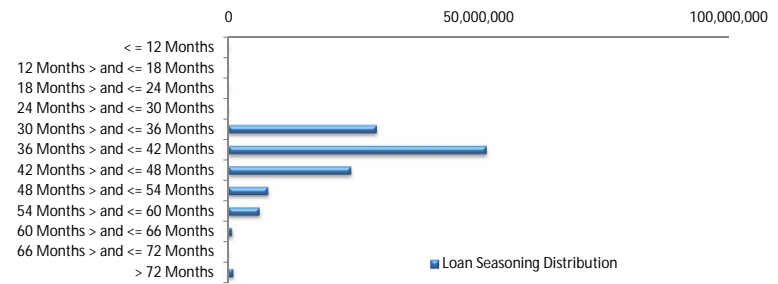
Balance Distribution (Consolidated)

Current Balance	Balance	% Balance	Loan Count (Consol.)	% Loan Count
<= \$100,000	3,111,502	2.56%	69	14.53%
\$100,000 > and <= \$150,000	7,028,775	5.77%	55	11.58%
\$150,000 > and <= \$200,000	11,050,566	9.08%	63	13.26%
\$200,000 > and <= \$250,000	15,271,617	12.55%	68	14.32%
\$250,000 > and <= \$300,000	17,803,811	14.63%	65	13.68%
\$300,000 > and <= \$350,000	12,967,272	10.67%	40	8.42%
\$350,000 > and <= \$400,000	16,001,839	13.15%	43	9.05%
\$400,000 > and <= \$450,000	10,979,828	9.02%	26	5.47%
\$450,000 > and <= \$500,000	5,737,110	4.71%	12	2.53%
\$500,000 > and <= \$550,000	5,275,888	4.33%	10	2.11%
\$550,000 > and <= \$600,000	3,992,447	3.28%	7	1.47%
\$600,000 > and <= \$650,000	604,110	0.50%	1	0.21%
\$650,000 > and <= \$700,000	3,314,360	2.72%	5	1.05%
\$700,000 > and <= \$750,000	3,567,851	2.93%	5	1.05%
\$750,000 > and <= \$800,000	1,507,911	1.24%	2	0.42%
\$800,000 > and <= \$850,000	0	0.00%	0	0.00%
\$850,000 > and <= \$900,000	2,590,639	2.13%	3	0.63%
\$900,000 > and <= \$950,000	912,278	0.75%	1	0.21%
\$950,000 > and <= \$1,000,000	0	0.00%	0	0.00%
> \$1,000,000	0	0.00%	0	0.00%
Total	121,717,802	100.00%	475	100.00%



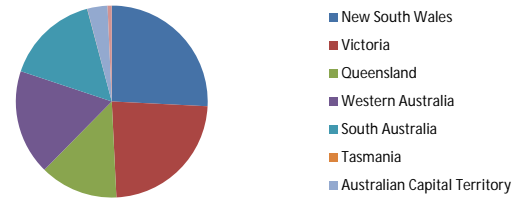
Loan Seasoning Distribution

Seasoning (Months)	Balance	% Balance	Loan Count	% Loan Count
<= 12 Months	0	0.00%	0	0.00%
12 Months > and <= 18 Months	0	0.00%	0	0.00%
18 Months > and <= 24 Months	0	0.00%	0	0.00%
24 Months > and <= 30 Months	0	0.00%	0	0.00%
30 Months > and <= 36 Months	29,653,830	24.36%	145	25.17%
36 Months > and <= 42 Months	51,556,241	42.36%	245	42.53%
42 Months > and <= 48 Months	24,507,886	20.14%	102	17.71%
48 Months > and <= 54 Months	7,983,902	6.56%	45	7.81%
54 Months > and <= 60 Months	6,261,777	5.14%	31	5.38%
60 Months > and <= 66 Months	734,585	0.60%	3	0.52%
66 Months > and <= 72 Months	0	0.00%	0	0.00%
> 72 Months	1,019,582	0.84%	5	0.87%
Total	121,717,802	100.00%	576	100.00%



Geographic Distribution

Jurisdiction State	Balance	% Balance	Loan Count (Consol.)	% Loan Count
New South Wales	31,383,003	25.78%	120	25.26%
Victoria	28,523,438	23.43%	119	25.05%
Queensland	16,047,021	13.18%	61	12.84%
Western Australia	21,571,830	17.72%	66	13.89%
South Australia	19,156,471	15.74%	94	19.79%
Tasmania	31,405	0.03%	1	0.21%
Australian Capital Territory	4,135,823	3.40%	13	2.74%
Northern Territory	868,811	0.71%	1	0.21%
No Data	0	0.00%	0	0.00%
Total	121,717,802	100.00%	475	100.00%



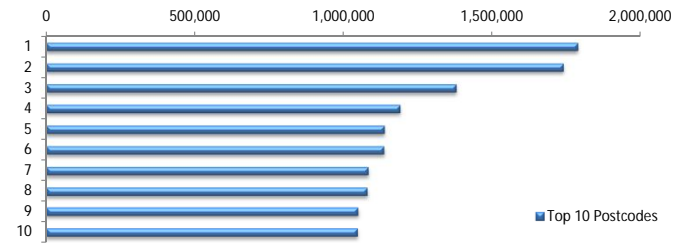
Locality

S&P Category	Balance	% Balance	Loan Count (Consol.)	% Loan Count
Metro	101,400,295	83.31%	383	80.63%
Non Metro	18,740,284	15.40%	86	18.11%
Inner City	1,577,223	1.30%	6	1.26%
No Data	0	0.00%	0	0.00%
Total	121,717,802	100.00%	475	100.00%



Top 10 Postcodes

Postcode	Balance	% Balance	Loan Count (Consol.)	% Loan Count
6030	1,788,208	1.47%	4	0.69%
2913	1,739,112	1.43%	6	1.04%
2031	1,379,153	1.13%	3	0.52%
6164	1,190,450	0.98%	3	0.52%
2076	1,137,612	0.93%	2	0.35%
3132	1,135,939	0.93%	3	0.52%
2193	1,083,539	0.89%	2	0.35%
2170	1,079,696	0.89%	4	0.69%
6065	1,046,771	0.86%	2	0.35%
5114	1,045,400	0.86%	3	0.52%
Total	12,625,879	10.37%	32	5.56%



Documentation

Document Type	Balance	% Balance	Loan Count	% Loan Count
Full Doc	121,717,802	100.00%	576	100.00%
Low Doc	0	0.00%	0	0.00%
No Doc	0	0.00%	0	0.00%
Total	121,717,802	100.00%	576	100.00%



Rate Type

Rate Type	Balance	% Balance	Loan Count	% Loan Count
Variable Rate	121,717,802	100.00%	576	100.00%
Fixed Rate	0	0.00%	0	0.00%
Total	121,717,802	100.00%	576	100.00%



Repayment Type

Repayment Type	Balance	% Balance	Loan Count	% Loan Count
Principal & Interest	96,232,383	79.06%	453	78.65%
Interest Only	24,666,658	20.27%	112	19.44%
Non-Billing	818,761	0.67%	11	1.91%
Total	121,717,802	100.00%	576	100.00%



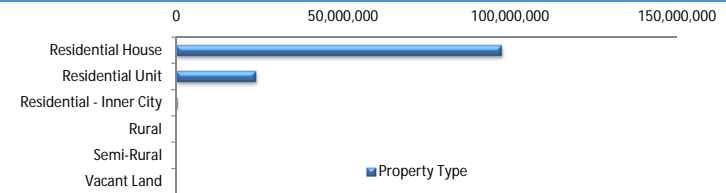
Loan Type

Product Category	Balance	% Balance	Loan Count	% Loan Count
Line of Credit	818,761	0.67%	11	1.91%
Term Loan	120,899,041	99.33%	565	98.09%
Total	121,717,802	100.00%	576	100.00%



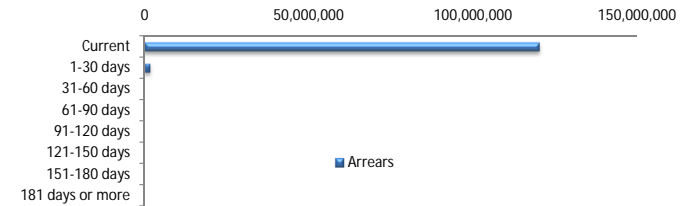
Property Type

Property Type	Balance	% Balance	Loan Count (Consol.)	% Loan Count
Residential House	97,587,367	80.18%	375	78.95%
Residential Unit	23,775,201	19.53%	97	20.42%
Residential - Inner City	318,771	0.26%	2	0.42%
Rural	36,463	0.03%	1	0.21%
Semi-Rural	0	0.00%	0	0.00%
Vacant Land	0	0.00%	0	0.00%
No Data	0	0.00%	0	0.00%
Total	121,717,802	100.00%	475	100.00%



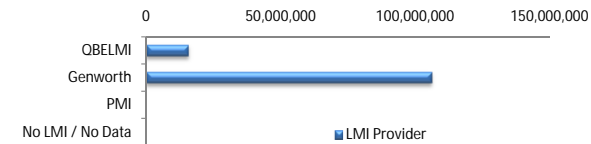
Arrears

Arrears Band	Balance	% Balance	Loan Count	% Loan Count
Current	120,136,743	98.70%	571	99.13%
1-30 days	1,581,059	1.30%	5	0.87%
31-60 days	0	0.00%	0	0.00%
61-90 days	0	0.00%	0	0.00%
91-120 days	0	0.00%	0	0.00%
121-150 days	0	0.00%	0	0.00%
151-180 days	0	0.00%	0	0.00%
181 days or more	0	0.00%	0	0.00%
Total	121,717,802	100.00%	576	100.00%



LMI Provider

LMI Provider	Balance	% Balance	Loan Count (Consol.)	% Loan Count
QBELMI	15,660,604	12.87%	57	12.00%
Genworth	106,057,198	87.13%	418	88.00%
PMI	0	0.00%	0	0.00%
No LMI / No Data	0	0.00%	0	0.00%
Total	121,717,802	100.00%	475	100.00%



Property Occupancy

Property Occupancy	Balance	% Balance	Loan Count	% Loan Count
Investment	25,644,335	21.07%	124	21.53%
Owner Occupier	96,073,467	78.93%	452	78.47%
Total	121,717,802	100.00%	576	100.00%



Default Statistics

Default Data	Amount	No. of Loans
Defaulted Loans	0.00	0.00
Loss on Sale	0.00	0.00
Claims on LMI	0.00	0.00
Claims paid by LMI	0.00	0.00
Claims Denied/Reduced	0.00	0.00
Loss covered by Excess Spread	0.00	N/A