

**AFG 2013-1 Trust
Collateral Report**



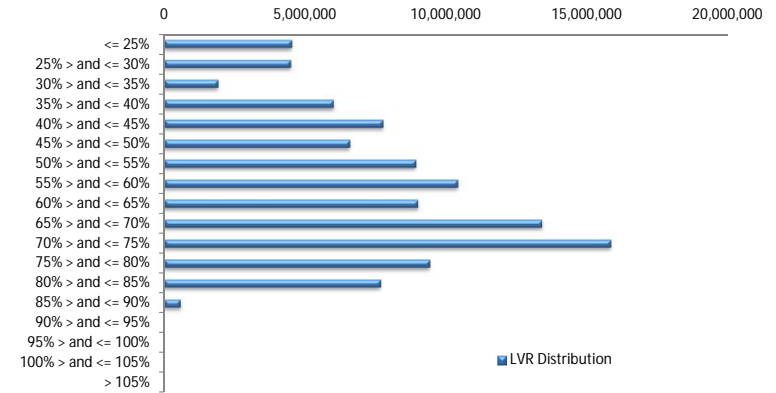
Model Period	39
Collection Period Start	01-May-16
Collection Period End	31-May-16
No. of Days	31
Interest Period Start	10-May-16
Interest Period End	09-Jun-16
No. of Days	31
Determination Date	07-Jun-16
Payment Date	10-Jun-16

Pool Statistics

Closing Balance of Mortgages	106,537,890
No. of Loans (Unconsolidated)	583
No. of Loans (Consolidated)	479
Average Loan Size (Unconsolidated)	182,741
Average Loan Size (Consolidated)	222,417
Largest Loan Size (Unconsolidated)	757,513
Largest Loan Size Consolidated)	773,442
Smallest Loan Size (Unconsolidated)	(13,151)
Smallest Loan Size (Consolidated)	(13,151)
Weighted Average Interest Rate	4.51%
Weighted Average LVR	58.33%
Weighted Average Seasoning	46.88
Weighted Average Remaining Term	304.73

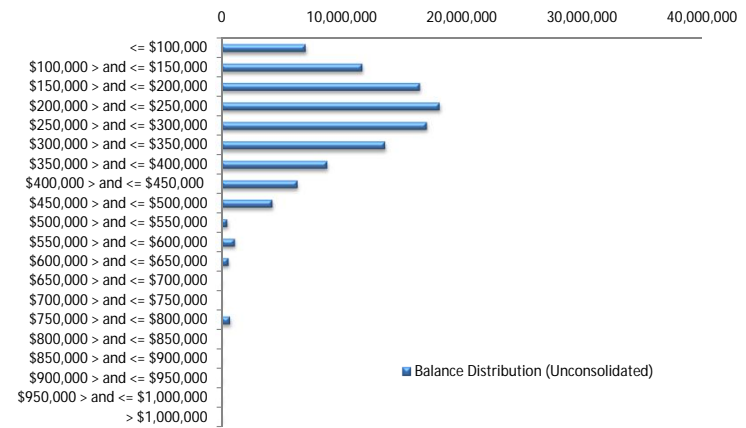
LVR Distribution

Current LTV	Balance	% Balance	Loan Count (Consol.)	% Loan Count
<= 25%	4,530,568	4.25%	71	14.82%
25% > and <= 30%	4,490,477	4.21%	32	6.68%
30% > and <= 35%	1,919,898	1.80%	14	2.92%
35% > and <= 40%	6,008,155	5.64%	31	6.47%
40% > and <= 45%	7,761,151	7.28%	33	6.89%
45% > and <= 50%	6,588,328	6.18%	31	6.47%
50% > and <= 55%	8,925,878	8.38%	37	7.72%
55% > and <= 60%	10,407,453	9.77%	43	8.98%
60% > and <= 65%	8,998,423	8.45%	33	6.89%
65% > and <= 70%	13,392,188	12.57%	52	10.86%
70% > and <= 75%	15,825,429	14.85%	50	10.44%
75% > and <= 80%	9,422,922	8.84%	29	6.05%
80% > and <= 85%	7,678,279	7.21%	21	4.38%
85% > and <= 90%	588,741	0.55%	2	0.42%
90% > and <= 95%	0	0.00%	0	0.00%
95% > and <= 100%	0	0.00%	0	0.00%
100% > and <= 105%	0	0.00%	0	0.00%
> 105%	0	0.00%	0	0.00%
Total	106,537,890	100.00%	479	100.00%



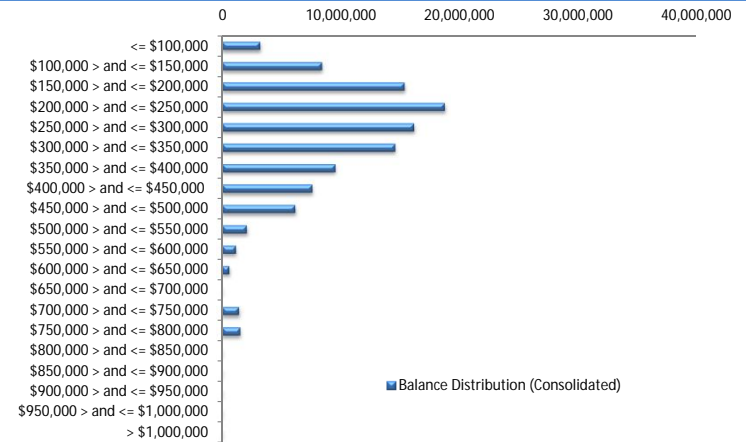
Balance Distribution (Unconsolidated)

Current Balance	Balance	% Balance	Loan Count	% Loan Count
<= \$100,000	7,022,478	6.59%	157	26.93%
\$100,000 > and <= \$150,000	11,721,645	11.00%	93	15.95%
\$150,000 > and <= \$200,000	16,490,670	15.48%	94	16.12%
\$200,000 > and <= \$250,000	18,122,072	17.01%	81	13.89%
\$250,000 > and <= \$300,000	17,068,268	16.02%	63	10.81%
\$300,000 > and <= \$350,000	13,610,717	12.78%	42	7.20%
\$350,000 > and <= \$400,000	8,808,644	8.27%	24	4.12%
\$400,000 > and <= \$450,000	6,347,196	5.96%	15	2.57%
\$450,000 > and <= \$500,000	4,269,744	4.01%	9	1.54%
\$500,000 > and <= \$550,000	522,264	0.49%	1	0.17%
\$550,000 > and <= \$600,000	1,166,329	1.09%	2	0.34%
\$600,000 > and <= \$650,000	630,351	0.59%	1	0.17%
\$650,000 > and <= \$700,000	0	0.00%	0	0.00%
\$700,000 > and <= \$750,000	0	0.00%	0	0.00%
\$750,000 > and <= \$800,000	757,513	0.71%	1	0.17%
\$800,000 > and <= \$850,000	0	0.00%	0	0.00%
\$850,000 > and <= \$900,000	0	0.00%	0	0.00%
\$900,000 > and <= \$950,000	0	0.00%	0	0.00%
\$950,000 > and <= \$1,000,000	0	0.00%	0	0.00%
> \$1,000,000	0	0.00%	0	0.00%
Total	106,537,890	100.00%	583	100.00%



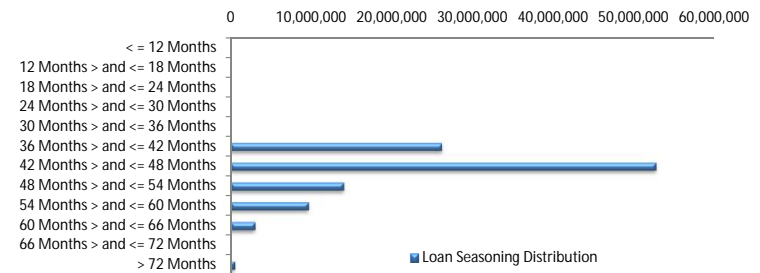
Balance Distribution (Consolidated)

Current Balance	Balance	% Balance	Loan Count (Consol.)	% Loan Count
<= \$100,000	3,200,493	3.00%	67	13.99%
\$100,000 > and <= \$150,000	8,419,223	7.90%	67	13.99%
\$150,000 > and <= \$200,000	15,351,484	14.41%	88	18.37%
\$200,000 > and <= \$250,000	18,744,199	17.59%	84	17.54%
\$250,000 > and <= \$300,000	16,150,236	15.16%	60	12.53%
\$300,000 > and <= \$350,000	14,567,699	13.67%	45	9.39%
\$350,000 > and <= \$400,000	9,542,760	8.96%	26	5.43%
\$400,000 > and <= \$450,000	7,595,412	7.13%	18	3.76%
\$450,000 > and <= \$500,000	6,153,971	5.78%	13	2.71%
\$500,000 > and <= \$550,000	2,085,408	1.96%	4	0.84%
\$550,000 > and <= \$600,000	1,166,329	1.09%	2	0.42%
\$600,000 > and <= \$650,000	603,302	0.57%	1	0.21%
\$650,000 > and <= \$700,000	0	0.00%	0	0.00%
\$700,000 > and <= \$750,000	1,426,420	1.34%	2	0.42%
\$750,000 > and <= \$800,000	1,530,954	1.44%	2	0.42%
\$800,000 > and <= \$850,000	0	0.00%	0	0.00%
\$850,000 > and <= \$900,000	0	0.00%	0	0.00%
\$900,000 > and <= \$950,000	0	0.00%	0	0.00%
\$950,000 > and <= \$1,000,000	0	0.00%	0	0.00%
> \$1,000,000	0	0.00%	0	0.00%
Total	106,537,890	100.00%	479	100.00%



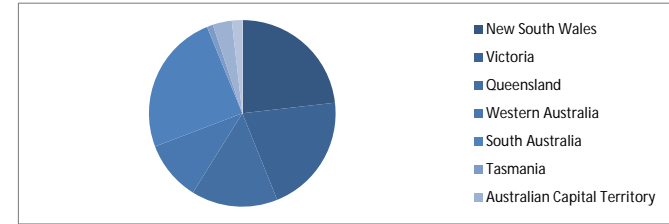
Loan Seasoning Distribution

Seasoning (Months)	Balance	% Balance	Loan Count	% Loan Count
<= 12 Months	0	0.00%	0	0.00%
12 Months > and <= 18 Months	0	0.00%	0	0.00%
18 Months > and <= 24 Months	0	0.00%	0	0.00%
24 Months > and <= 30 Months	0	0.00%	0	0.00%
30 Months > and <= 36 Months	0	0.00%	0	0.00%
36 Months > and <= 42 Months	26,256,650	24.65%	144	24.70%
42 Months > and <= 48 Months	52,722,580	49.49%	280	48.03%
48 Months > and <= 54 Months	14,081,193	13.22%	87	14.92%
54 Months > and <= 60 Months	9,735,830	9.14%	57	9.78%
60 Months > and <= 66 Months	3,132,398	2.94%	13	2.23%
66 Months > and <= 72 Months	0	0.00%	0	0.00%
> 72 Months	609,237	0.57%	2	0.34%
Total	106,537,890	100.00%	583	100.00%



Geographic Distribution

Jurisdiction State	Balance	% Balance	Loan Count (Consol.)	% Loan Count
New South Wales	24,684,893	23.17%	109	22.76%
Victoria	22,066,264	20.71%	95	19.83%
Queensland	15,955,836	14.98%	64	13.36%
Western Australia	11,020,514	10.34%	37	7.72%
South Australia	26,239,707	24.63%	149	31.11%
Tasmania	1,128,991	1.06%	6	1.25%
Australian Capital Territory	3,512,579	3.30%	11	2.30%
Northern Territory	1,929,105	1.81%	8	1.67%
No Data	0	0.00%	0	0.00%
Total	106,537,890	100.00%	479	100.00%



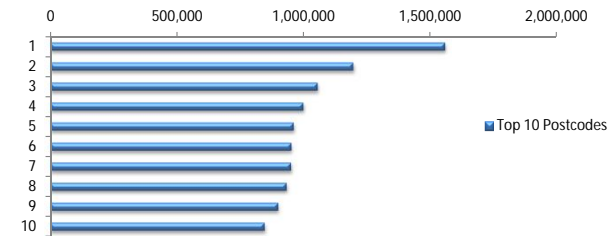
Locality

S&P Category	Balance	% Balance	Loan Count (Consol.)	% Loan Count
Metro	82,747,528	77.67%	375	78.29%
Non Metro	21,473,297	20.16%	98	20.46%
Inner City	2,317,065	2.17%	6	1.25%
No Data	0	0.00%	0	0.00%
Total	106,537,890	100.00%	479	100.00%



Top 10 Postcodes

Postcode	Balance	% Balance	Loan Count (Consol.)	% Loan Count
5108	1,559,038	1.46%	11	1.89%
5085	1,196,491	1.12%	4	0.69%
2602	1,056,107	0.99%	2	0.34%
5043	999,812	0.94%	5	0.86%
5097	961,248	0.90%	5	0.86%
6006	952,692	0.89%	2	0.34%
4702	951,521	0.89%	3	0.51%
5114	933,989	0.88%	6	1.03%
5110	900,460	0.85%	4	0.69%
2036	847,067	0.80%	2	0.34%
Total	10,358,424	9.72%	44	7.55%



Documentation

Document Type	Balance	% Balance	Loan Count	% Loan Count
Full Doc	106,537,890	100.00%	583	100.00%
Low Doc	0	0.00%	0	0.00%
No Doc	0	0.00%	0	0.00%
Total	106,537,890	100.00%	583	100.00%



Rate Type

Rate Type	Balance	% Balance	Loan Count	% Loan Count
Variable Rate	106,537,890	100.00%	583	100.00%
Fixed Rate	0	0.00%	0	0.00%
Total	106,537,890	100.00%	583	100.00%



Repayment Type

Repayment Type	Balance	% Balance	Loan Count	% Loan Count
Principal & Interest	81,153,439	76.17%	450	77.19%
Interest Only	24,508,414	23.00%	122	20.93%
Non-Billing	876,037	0.82%	11	1.89%
Total	106,537,890	100.00%	583	100.00%



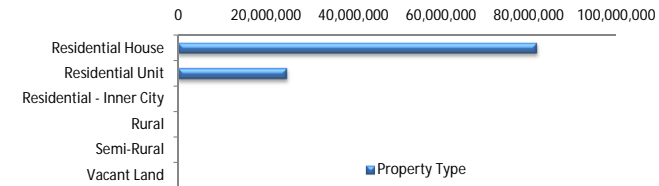
Loan Type

Product Category	Balance	% Balance	Loan Count	% Loan Count
Line of Credit	876,037	0.82%	11	1.89%
Term Loan	105,661,853	99.18%	572	98.11%
Total	106,537,890	100.00%	583	100.00%



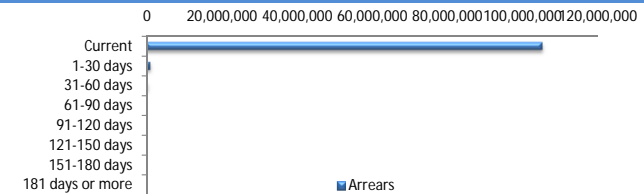
Property Type

Property Type	Balance	% Balance	Loan Count (Consol.)	% Loan Count
Residential House	81,811,861	76.79%	369	77.04%
Residential Unit	24,726,029	23.21%	110	22.96%
Residential - Inner City	0	0.00%	0	0.00%
Rural	0	0.00%	0	0.00%
Semi-Rural	0	0.00%	0	0.00%
Vacant Land	0	0.00%	0	0.00%
No Data	0	0.00%	0	0.00%
Total	106,537,890	100.00%	479	100.00%



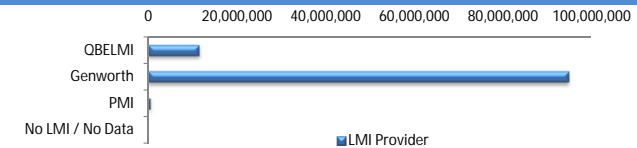
Arrears

Arrears Band	Balance	% Balance	Loan Count	% Loan Count
Current	105,166,428	98.71%	577	98.97%
1-30 days	1,027,182	0.96%	5	0.86%
31-60 days	344,280	0.32%	1	0.17%
61-90 days	0	0.00%	0	0.00%
91-120 days	0	0.00%	0	0.00%
121-150 days	0	0.00%	0	0.00%
151-180 days	0	0.00%	0	0.00%
181 days or more	0	0.00%	0	0.00%
Total	106,537,890	100.00%	583	100.00%



LMI Provider

LMI Provider	Balance	% Balance	Loan Count	% Loan Count
QBELMI	11,410,011	10.71%	59	12.32%
Genworth	94,700,450	88.89%	419	87.47%
PMI	427,429	0.40%	1	0.21%
No LMI / No Data	0	0.00%	0	0.00%
Total	106,537,890	100.00%	479	100.00%



Property Occupancy

Property Occupancy	Balance	% Balance	Loan Count	% Loan Count
Investment	26,631,685	25.00%	137	23.50%
Owner Occupier	79,906,204	75.00%	446	76.50%
Total	106,537,890	100.00%	583	100.00%



Default Statistics

Default Data	Amount	No. of Loans
Defaulted Loans	0.00	0.00
Loss on Sale	0.00	0.00
Claims on LMI	0.00	0.00
Claims paid by LMI	0.00	0.00
Claims Denied/Reduced	0.00	0.00
Loss covered by Excess Spread	0.00	N/A