

**AFG Series 2013-2  
Collateral Report**



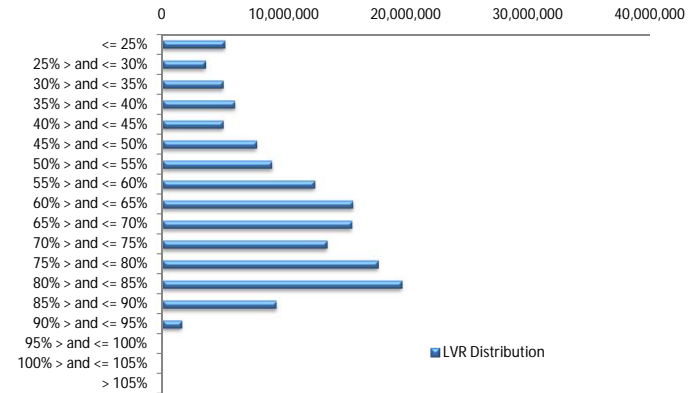
Model Period	25
Collection Period Start	01-Nov-15
Collection Period End	30-Nov-15
No. of Days	30
Interest Period Start	16-Nov-15
Interest Period End	13-Dec-15
No. of Days	28
Determination Date	09-Dec-15
Payment Date	14-Dec-15

**Pool Statistics**

Closing Balance of Mortgages	146,759,029
No. of Loans (Unconsolidated)	653
No. of Loans (Consolidated)	554
Average Loan Size (Unconsolidated)	224,746
Average Loan Size (Consolidated)	264,908
Largest Loan Size (Unconsolidated)	1,004,904
Largest Loan Size (Consolidated)	1,004,904
Smallest Loan Size (Unconsolidated)	(72,121)
Smallest Loan Size (Consolidated)	(72,121)
Weighted Average Interest Rate	4.65%
Weighted Average LVR	63.27%
Weighted Average Seasoning	35.47
Weighted Average Remaining Term	317.54

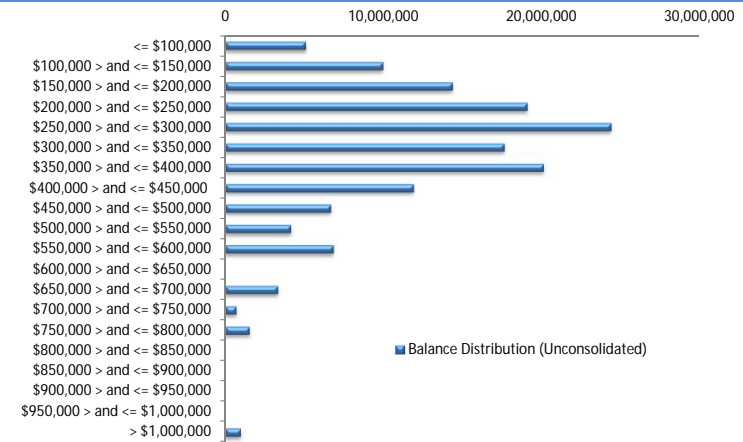
**LVR Distribution**

Current LTV	Balance	% Balance	Loan Count (Consol.)	% Loan Count
<= 25%	5,128,003	3.49%	82	14.80%
25% > and <= 30%	3,560,835	2.43%	23	4.15%
30% > and <= 35%	5,006,373	3.41%	25	4.51%
35% > and <= 40%	5,991,454	4.08%	34	6.14%
40% > and <= 45%	5,015,993	3.42%	20	3.61%
45% > and <= 50%	7,754,231	5.28%	31	5.60%
50% > and <= 55%	8,994,885	6.13%	34	6.14%
55% > and <= 60%	12,466,483	8.49%	38	6.86%
60% > and <= 65%	15,604,410	10.63%	45	8.12%
65% > and <= 70%	15,525,706	10.58%	45	8.12%
70% > and <= 75%	13,474,349	9.18%	42	7.58%
75% > and <= 80%	17,659,689	12.03%	48	8.66%
80% > and <= 85%	19,591,526	13.35%	53	9.57%
85% > and <= 90%	9,357,718	6.38%	30	5.42%
90% > and <= 95%	1,627,376	1.11%	4	0.72%
95% > and <= 100%	0	0.00%	0	0.00%
100% > and <= 105%	0	0.00%	0	0.00%
> 105%	0	0.00%	0	0.00%
<b>Total</b>	<b>146,759,029</b>	<b>100.00%</b>	<b>554</b>	<b>100.00%</b>



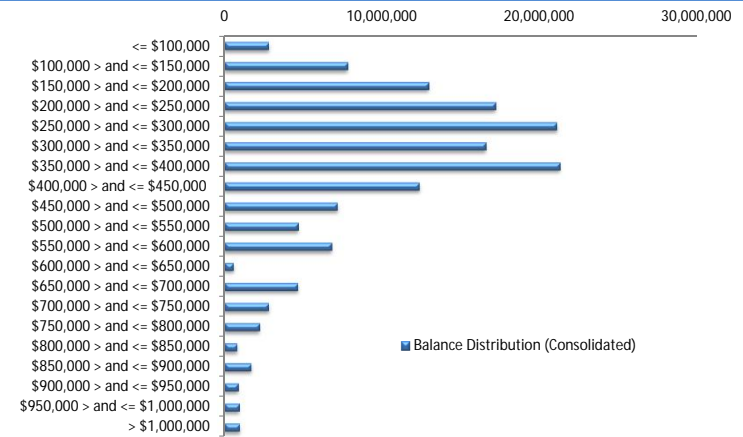
**Balance Distribution (Unconsolidated)**

Current Balance	Balance	% Balance	Loan Count	% Loan Count
<= \$100,000	5,091,847	3.47%	139	21.29%
\$100,000 > and <= \$150,000	9,969,876	6.79%	79	12.10%
\$150,000 > and <= \$200,000	14,350,803	9.78%	82	12.56%
\$200,000 > and <= \$250,000	19,071,229	12.99%	85	13.02%
\$250,000 > and <= \$300,000	24,352,005	16.59%	89	13.63%
\$300,000 > and <= \$350,000	17,625,096	12.01%	54	8.27%
\$350,000 > and <= \$400,000	20,099,308	13.70%	54	8.27%
\$400,000 > and <= \$450,000	11,900,598	8.11%	28	4.29%
\$450,000 > and <= \$500,000	6,675,956	4.55%	14	2.14%
\$500,000 > and <= \$550,000	4,164,513	2.84%	8	1.23%
\$550,000 > and <= \$600,000	6,843,434	4.66%	12	1.84%
\$600,000 > and <= \$650,000	0	0.00%	0	0.00%
\$650,000 > and <= \$700,000	3,344,508	2.28%	5	0.77%
\$700,000 > and <= \$750,000	717,371	0.49%	1	0.15%
\$750,000 > and <= \$800,000	1,547,582	1.05%	2	0.31%
\$800,000 > and <= \$850,000	0	0.00%	0	0.00%
\$850,000 > and <= \$900,000	0	0.00%	0	0.00%
\$900,000 > and <= \$950,000	0	0.00%	0	0.00%
\$950,000 > and <= \$1,000,000	0	0.00%	0	0.00%
> \$1,000,000	1,004,904	0.68%	1	0.15%
<b>Total</b>	<b>146,759,029</b>	<b>100.00%</b>	<b>653</b>	<b>100.00%</b>



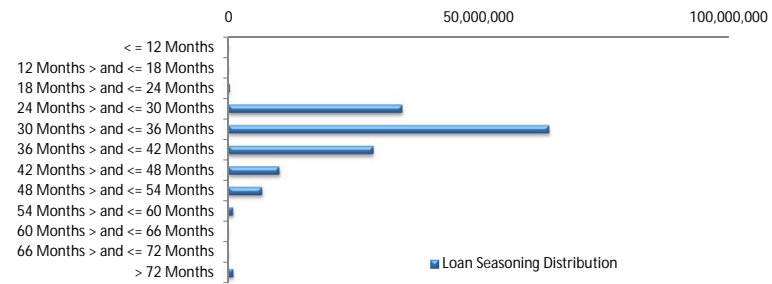
**Balance Distribution (Consolidated)**

Current Balance	Balance	% Balance	Loan Count (Consol.)	% Loan Count
<= \$100,000	2,854,821	1.95%	71	12.82%
\$100,000 > and <= \$150,000	7,850,555	5.35%	62	11.19%
\$150,000 > and <= \$200,000	12,972,793	8.84%	74	13.36%
\$200,000 > and <= \$250,000	17,184,905	11.71%	76	13.72%
\$250,000 > and <= \$300,000	21,061,534	14.35%	77	13.90%
\$300,000 > and <= \$350,000	16,580,141	11.30%	51	9.21%
\$350,000 > and <= \$400,000	21,263,456	14.49%	57	10.29%
\$400,000 > and <= \$450,000	12,370,938	8.43%	29	5.23%
\$450,000 > and <= \$500,000	7,183,530	4.89%	15	2.71%
\$500,000 > and <= \$550,000	4,707,690	3.21%	9	1.62%
\$550,000 > and <= \$600,000	6,825,318	4.65%	12	2.17%
\$600,000 > and <= \$650,000	607,778	0.41%	1	0.18%
\$650,000 > and <= \$700,000	4,692,141	3.20%	7	1.26%
\$700,000 > and <= \$750,000	2,845,507	1.94%	4	0.72%
\$750,000 > and <= \$800,000	2,266,806	1.54%	3	0.54%
\$800,000 > and <= \$850,000	848,789	0.58%	1	0.18%
\$850,000 > and <= \$900,000	1,737,894	1.18%	2	0.36%
\$900,000 > and <= \$950,000	914,414	0.62%	1	0.18%
\$950,000 > and <= \$1,000,000	985,114	0.67%	1	0.18%
> \$1,000,000	1,004,904	0.68%	1	0.18%
<b>Total</b>	<b>146,759,029</b>	<b>100.00%</b>	<b>554</b>	<b>100.00%</b>



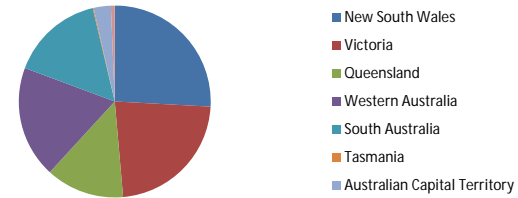
**Loan Seasoning Distribution**

Seasoning (Months)	Balance	% Balance	Loan Count	% Loan Count
<= 12 Months	0	0.00%	0	0.00%
12 Months > and <= 18 Months	0	0.00%	0	0.00%
18 Months > and <= 24 Months	289,950	0.20%	1	0.15%
24 Months > and <= 30 Months	34,675,718	23.63%	161	24.66%
30 Months > and <= 36 Months	63,896,252	43.54%	279	42.73%
36 Months > and <= 42 Months	28,952,209	19.73%	116	17.76%
42 Months > and <= 48 Months	10,201,045	6.95%	52	7.96%
48 Months > and <= 54 Months	6,744,754	4.60%	33	5.05%
54 Months > and <= 60 Months	967,436	0.66%	6	0.92%
60 Months > and <= 66 Months	0	0.00%	0	0.00%
66 Months > and <= 72 Months	0	0.00%	0	0.00%
> 72 Months	1,031,664	0.70%	5	0.77%
<b>Total</b>	<b>146,759,029</b>	<b>100.00%</b>	<b>653</b>	<b>100.00%</b>



### Geographic Distribution

Jurisdiction State	Balance	% Balance	Loan Count (Consol.)	% Loan Count
New South Wales	37,956,930	25.86%	141	25.45%
Victoria	33,354,755	22.73%	138	24.91%
Queensland	19,442,165	13.25%	73	13.18%
Western Australia	27,648,333	18.84%	79	14.26%
South Australia	22,962,636	15.65%	106	19.13%
Tasmania	230,637	0.16%	2	0.36%
Australian Capital Territory	4,224,655	2.88%	13	2.35%
Northern Territory	938,918	0.64%	2	0.36%
No Data	0	0.00%	0	0.00%
<b>Total</b>	<b>146,759,029</b>	<b>100.00%</b>	<b>554</b>	<b>100.00%</b>



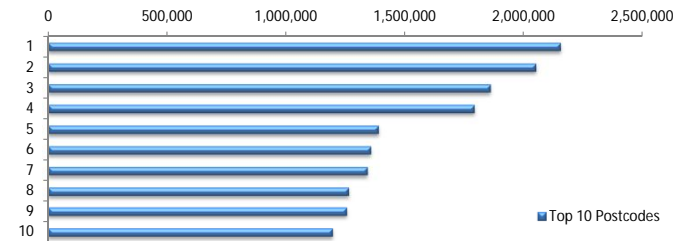
### Locality

S&P Category	Balance	% Balance	Loan Count (Consol.)	% Loan Count
Metro	122,145,198	83.23%	446	80.51%
Non Metro	22,848,546	15.57%	102	18.41%
Inner City	1,765,285	1.20%	6	1.08%
No Data	0	0.00%	0	0.00%
<b>Total</b>	<b>146,759,029</b>	<b>100.00%</b>	<b>554</b>	<b>100.00%</b>



### Top 10 Postcodes

Postcode	Balance	% Balance	Loan Count (Consol.)	% Loan Count
6030	2,152,151	1.47%	5	0.77%
6065	2,048,943	1.40%	3	0.46%
6164	1,858,567	1.27%	5	0.77%
2913	1,790,240	1.22%	6	0.92%
2031	1,387,809	0.95%	3	0.46%
4815	1,356,031	0.92%	3	0.46%
3216	1,341,521	0.91%	4	0.61%
5114	1,262,692	0.86%	4	0.61%
2260	1,256,080	0.86%	5	0.77%
6025	1,196,474	0.82%	2	0.31%
<b>Total</b>	<b>15,650,508</b>	<b>10.66%</b>	<b>40</b>	<b>6.13%</b>



### Documentation

Document Type	Balance	% Balance	Loan Count	% Loan Count
Full Doc	146,759,029	100.00%	653	100.00%
Low Doc	0	0.00%	0	0.00%
No Doc	0	0.00%	0	0.00%
<b>Total</b>	<b>146,759,029</b>	<b>100.00%</b>	<b>653</b>	<b>100.00%</b>



### Rate Type

Rate Type	Balance	% Balance	Loan Count	% Loan Count
Variable Rate	146,759,029	100.00%	653	100.00%
Fixed Rate	0	0.00%	0	0.00%
<b>Total</b>	<b>146,759,029</b>	<b>100.00%</b>	<b>653</b>	<b>100.00%</b>



### Repayment Type

Repayment Type	Balance	% Balance	Loan Count	% Loan Count
Principal & Interest	116,618,984	79.46%	521	79.79%
Interest Only	29,276,549	19.95%	121	18.53%
Non-Billing	863,496	0.59%	11	1.68%
<b>Total</b>	<b>146,759,029</b>	<b>100.00%</b>	<b>653</b>	<b>100.00%</b>



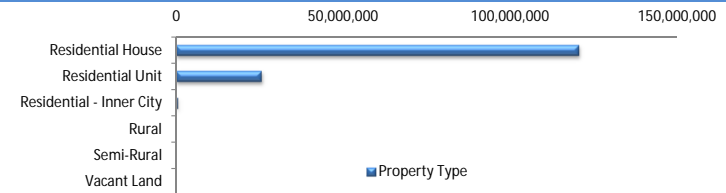
### Loan Type

Product Category	Balance	% Balance	Loan Count	% Loan Count
Line of Credit	863,496	0.59%	11	1.68%
Term Loan	145,895,533	99.41%	642	98.32%
<b>Total</b>	<b>146,759,029</b>	<b>100.00%</b>	<b>653</b>	<b>100.00%</b>



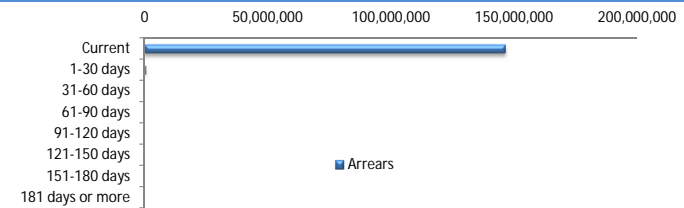
### Property Type

Property Type	Balance	% Balance	Loan Count (Consol.)	% Loan Count
Residential House	120,793,272	82.31%	447	80.69%
Residential Unit	25,494,405	17.37%	104	18.77%
Residential - Inner City	444,090	0.30%	2	0.36%
Rural	27,262	0.02%	1	0.18%
Semi-Rural	0	0.00%	0	0.00%
Vacant Land	0	0.00%	0	0.00%
No Data	0	0.00%	0	0.00%
<b>Total</b>	<b>146,759,029</b>	<b>100.00%</b>	<b>554</b>	<b>100.00%</b>



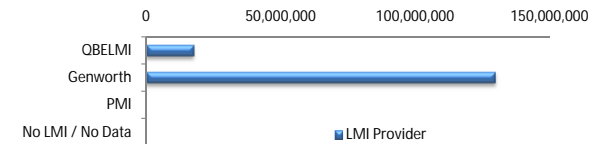
### Arrears

Arrears Band	Balance	% Balance	Loan Count	% Loan Count
Current	146,299,954	99.69%	651	99.69%
1-30 days	459,075	0.31%	2	0.31%
31-60 days	0	0.00%	0	0.00%
61-90 days	0	0.00%	0	0.00%
91-120 days	0	0.00%	0	0.00%
121-150 days	0	0.00%	0	0.00%
151-180 days	0	0.00%	0	0.00%
181 days or more	0	0.00%	0	0.00%
<b>Total</b>	<b>146,759,029</b>	<b>100.00%</b>	<b>653</b>	<b>100.00%</b>



### LMI Provider

LMI Provider	Balance	% Balance	Loan Count (Consol.)	% Loan Count
QBELMI	17,368,557	11.83%	64	11.55%
Genworth	129,390,471	88.17%	490	88.45%
PMI	0	0.00%	0	0.00%
No LMI / No Data	0	0.00%	0	0.00%
<b>Total</b>	<b>146,759,029</b>	<b>100.00%</b>	<b>554</b>	<b>100.00%</b>



### Property Occupancy

Property Occupancy	Balance	% Balance	Loan Count	% Loan Count
Investment	30,646,022	20.88%	141	21.59%
Owner Occupier	116,113,007	79.12%	512	78.41%
<b>Total</b>	<b>146,759,029</b>	<b>100.00%</b>	<b>653</b>	<b>100.00%</b>



### Default Statistics

Default Data	Amount	No. of Loans
Defaulted Loans	0.00	0.00
Loss on Sale	0.00	0.00
Claims on LMI	0.00	0.00
Claims paid by LMI	0.00	0.00
Claims Denied/Reduced	0.00	0.00
Loss covered by Excess Spread	0.00	N/A