

AFG 2013-1 Trust
Collateral Report



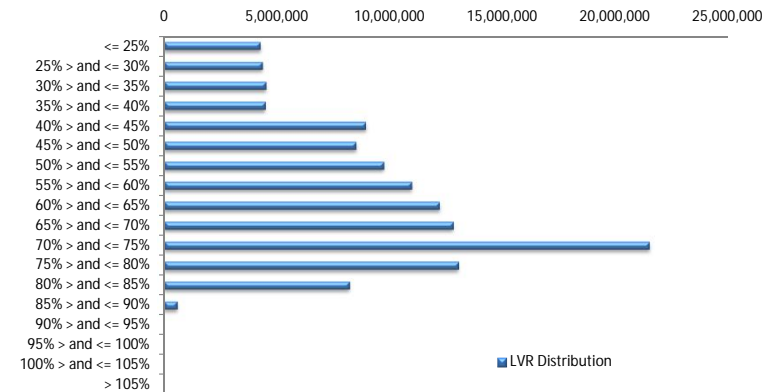
Model Period	32
Collection Period Start	01-Oct-15
Collection Period End	31-Oct-15
No. of Days	31
Interest Period Start	12-Oct-15
Interest Period End	09-Nov-15
No. of Days	29
Determination Date	05-Nov-15
Payment Date	10-Nov-15

Pool Statistics

Closing Balance of Mortgages	124,340,992
No. of Loans (Unconsolidated)	643
No. of Loans (Consolidated)	530
Average Loan Size (Unconsolidated)	193,376
Average Loan Size (Consolidated)	234,606
Largest Loan Size (Unconsolidated)	765,961
Largest Loan Size Consolidated)	774,729
Smallest Loan Size (Unconsolidated)	(6,673)
Smallest Loan Size (Consolidated)	(6,673)
Weighted Average Interest Rate	4.57%
Weighted Average LVR	59.15%
Weighted Average Seasoning	39.54
Weighted Average Remaining Term	312.09

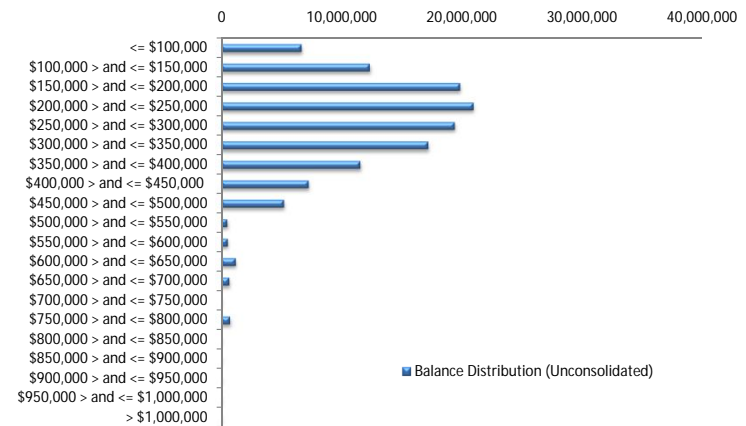
LVR Distribution

Current LTV	Balance	% Balance	Loan Count (Consol.)	% Loan Count
<= 25%	4,276,830	3.44%	60	11.32%
25% > and <= 30%	4,370,546	3.51%	27	5.09%
30% > and <= 35%	4,526,086	3.64%	31	5.85%
35% > and <= 40%	4,499,574	3.62%	26	4.91%
40% > and <= 45%	8,955,689	7.20%	38	7.17%
45% > and <= 50%	8,516,101	6.85%	35	6.60%
50% > and <= 55%	9,750,734	7.84%	39	7.36%
55% > and <= 60%	10,981,202	8.83%	45	8.49%
60% > and <= 65%	12,223,861	9.83%	45	8.49%
65% > and <= 70%	12,832,843	10.32%	48	9.06%
70% > and <= 75%	21,521,082	17.31%	69	13.02%
75% > and <= 80%	13,067,271	10.51%	42	7.92%
80% > and <= 85%	8,230,492	6.62%	23	4.34%
85% > and <= 90%	588,682	0.47%	2	0.38%
90% > and <= 95%	0	0.00%	0	0.00%
95% > and <= 100%	0	0.00%	0	0.00%
100% > and <= 105%	0	0.00%	0	0.00%
> 105%	0	0.00%	0	0.00%
Total	124,340,992	100.00%	530	100.00%



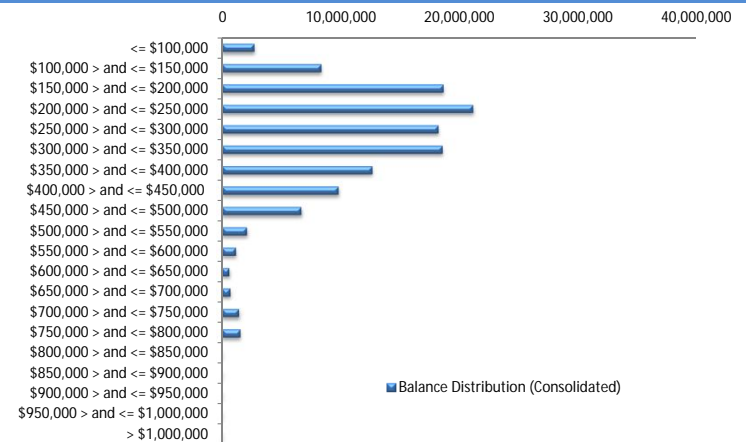
Balance Distribution (Unconsolidated)

Current Balance	Balance	% Balance	Loan Count	% Loan Count
<= \$100,000	6,693,924	5.38%	149	23.17%
\$100,000 > and <= \$150,000	12,349,623	9.93%	99	15.40%
\$150,000 > and <= \$200,000	19,843,327	15.96%	113	17.57%
\$200,000 > and <= \$250,000	20,957,135	16.85%	93	14.46%
\$250,000 > and <= \$300,000	19,398,868	15.60%	71	11.04%
\$300,000 > and <= \$350,000	17,209,443	13.84%	53	8.24%
\$350,000 > and <= \$400,000	11,559,400	9.30%	31	4.82%
\$400,000 > and <= \$450,000	7,287,459	5.86%	17	2.64%
\$450,000 > and <= \$500,000	5,243,689	4.22%	11	1.71%
\$500,000 > and <= \$550,000	524,049	0.42%	1	0.16%
\$550,000 > and <= \$600,000	578,075	0.46%	1	0.16%
\$600,000 > and <= \$650,000	1,231,024	0.99%	2	0.31%
\$650,000 > and <= \$700,000	699,015	0.56%	1	0.16%
\$700,000 > and <= \$750,000	0	0.00%	0	0.00%
\$750,000 > and <= \$800,000	765,961	0.62%	1	0.16%
\$800,000 > and <= \$850,000	0	0.00%	0	0.00%
\$850,000 > and <= \$900,000	0	0.00%	0	0.00%
\$900,000 > and <= \$950,000	0	0.00%	0	0.00%
\$950,000 > and <= \$1,000,000	0	0.00%	0	0.00%
> \$1,000,000	0	0.00%	0	0.00%
Total	124,340,992	100.00%	643	100.00%



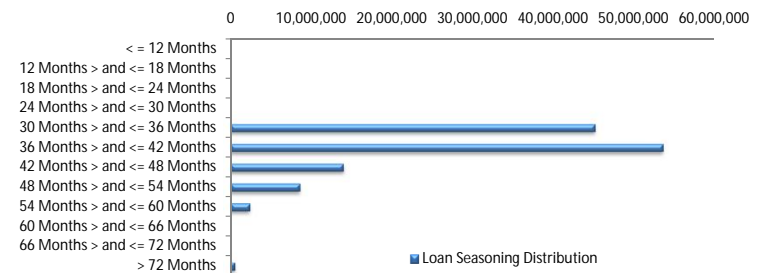
Balance Distribution (Consolidated)

Current Balance	Balance	% Balance	Loan Count (Consol.)	% Loan Count
<= \$100,000	2,720,704	2.19%	55	10.38%
\$100,000 > and <= \$150,000	8,369,336	6.73%	67	12.64%
\$150,000 > and <= \$200,000	18,643,229	14.99%	107	20.19%
\$200,000 > and <= \$250,000	21,142,309	17.00%	94	17.74%
\$250,000 > and <= \$300,000	18,217,841	14.65%	67	12.64%
\$300,000 > and <= \$350,000	18,563,687	14.93%	57	10.75%
\$350,000 > and <= \$400,000	12,666,571	10.19%	34	6.42%
\$400,000 > and <= \$450,000	9,814,390	7.89%	23	4.34%
\$450,000 > and <= \$500,000	6,677,359	5.37%	14	2.64%
\$500,000 > and <= \$550,000	2,091,822	1.68%	4	0.75%
\$550,000 > and <= \$600,000	1,167,426	0.94%	2	0.38%
\$600,000 > and <= \$650,000	603,626	0.49%	1	0.19%
\$650,000 > and <= \$700,000	699,015	0.56%	1	0.19%
\$700,000 > and <= \$750,000	1,422,989	1.14%	2	0.38%
\$750,000 > and <= \$800,000	1,540,690	1.24%	2	0.38%
\$800,000 > and <= \$850,000	0	0.00%	0	0.00%
\$850,000 > and <= \$900,000	0	0.00%	0	0.00%
\$900,000 > and <= \$950,000	0	0.00%	0	0.00%
\$950,000 > and <= \$1,000,000	0	0.00%	0	0.00%
> \$1,000,000	0	0.00%	0	0.00%
Total	124,340,992	100.00%	530	100.00%



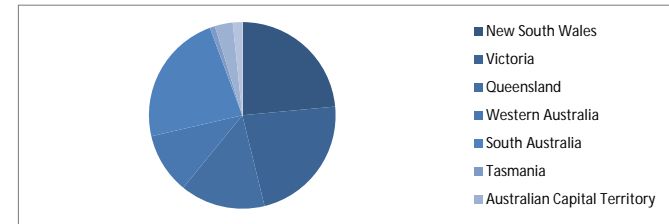
Loan Seasoning Distribution

Seasoning (Months)	Balance	% Balance	Loan Count	% Loan Count
<= 12 Months	0	0.00%	0	0.00%
12 Months > and <= 18 Months	0	0.00%	0	0.00%
18 Months > and <= 24 Months	0	0.00%	0	0.00%
24 Months > and <= 30 Months	0	0.00%	0	0.00%
30 Months > and <= 36 Months	45,102,545	36.27%	225	34.99%
36 Months > and <= 42 Months	53,498,432	43.03%	271	42.15%
42 Months > and <= 48 Months	14,021,806	11.28%	88	13.69%
48 Months > and <= 54 Months	8,647,007	6.95%	47	7.31%
54 Months > and <= 60 Months	2,461,956	1.98%	10	1.56%
60 Months > and <= 66 Months	0	0.00%	0	0.00%
66 Months > and <= 72 Months	0	0.00%	0	0.00%
> 72 Months	609,246	0.49%	2	0.31%
Total	124,340,992	100.00%	643	100.00%



Geographic Distribution

Jurisdiction State	Balance	% Balance	Loan Count (Consol.)	% Loan Count
New South Wales	29,219,242	23.50%	120	22.64%
Victoria	28,190,596	22.67%	112	21.13%
Queensland	18,285,523	14.71%	71	13.40%
Western Australia	13,067,984	10.51%	43	8.11%
South Australia	28,535,011	22.95%	158	29.81%
Tasmania	1,137,426	0.91%	6	1.13%
Australian Capital Territory	3,845,299	3.09%	12	2.26%
Northern Territory	2,059,911	1.66%	8	1.51%
No Data	0	0.00%	0	0.00%
Total	124,340,992	100.00%	530	100.00%



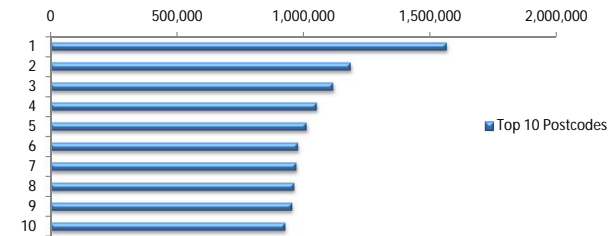
Locality

S&P Category	Balance	% Balance	Loan Count (Consol.)	% Loan Count
Metro	98,757,191	79.42%	421	79.43%
Non Metro	23,263,060	18.71%	103	19.43%
Inner City	2,320,742	1.87%	6	1.13%
No Data	0	0.00%	0	0.00%
Total	124,340,992	100.00%	530	100.00%



Top 10 Postcodes

Postcode	Balance	% Balance	Loan Count (Consol.)	% Loan Count
5108	1,565,024	1.26%	11	1.71%
5085	1,186,590	0.95%	4	0.62%
5114	1,117,308	0.90%	7	1.09%
2602	1,052,714	0.85%	2	0.31%
5043	1,012,588	0.81%	5	0.78%
5096	978,325	0.79%	6	0.93%
5097	971,803	0.78%	5	0.78%
6006	963,639	0.77%	2	0.31%
4702	955,393	0.77%	3	0.47%
3216	928,473	0.75%	4	0.62%
Total	10,731,856	8.63%	49	7.62%



Documentation

Document Type	Balance	% Balance	Loan Count	% Loan Count
Full Doc	124,340,992	100.00%	643	100.00%
Low Doc	0	0.00%	0	0.00%
No Doc	0	0.00%	0	0.00%
Total	124,340,992	100.00%	643	100.00%



Rate Type

Rate Type	Balance	% Balance	Loan Count	% Loan Count
Variable Rate	124,340,992	100.00%	643	100.00%
Fixed Rate	0	0.00%	0	0.00%
Total	124,340,992	100.00%	643	100.00%



Repayment Type

Repayment Type	Balance	% Balance	Loan Count	% Loan Count
Principal & Interest	94,350,005	75.88%	492	76.52%
Interest Only	28,999,084	23.32%	139	21.62%
Non-Billing	991,904	0.80%	12	1.87%
Total	124,340,992	100.00%	643	100.00%



Loan Type

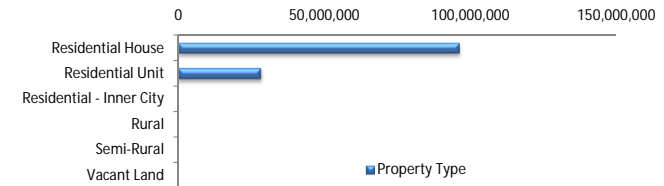
Product Category	Balance	% Balance	Loan Count	% Loan Count
Line of Credit	991,904	0.80%	12	1.87%
Term Loan	123,349,089	99.20%	631	98.13%
Total	124,340,992	100.00%	643	100.00%



■ Line of Credit
■ Term Loan

Property Type

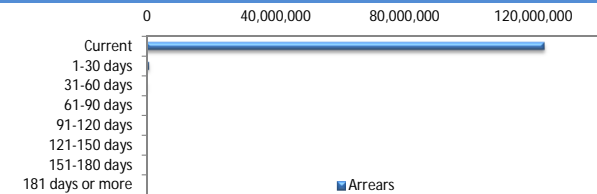
Property Type	Balance	% Balance	Loan Count (Consol.)	% Loan Count
Residential House	96,231,043	77.39%	410	77.36%
Residential Unit	28,109,949	22.61%	120	22.64%
Residential - Inner City	0	0.00%	0	0.00%
Rural	0	0.00%	0	0.00%
Semi-Rural	0	0.00%	0	0.00%
Vacant Land	0	0.00%	0	0.00%
No Data	0	0.00%	0	0.00%
Total	124,340,992	100.00%	530	100.00%



■ Property Type

Arrears

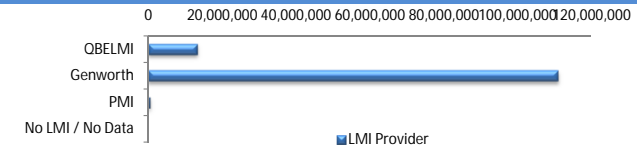
Arrears Band	Balance	% Balance	Loan Count	% Loan Count
Current	123,264,156	99.13%	639	99.38%
1-30 days	836,793	0.67%	3	0.47%
31-60 days	240,044	0.19%	1	0.16%
61-90 days	0	0.00%	0	0.00%
91-120 days	0	0.00%	0	0.00%
121-150 days	0	0.00%	0	0.00%
151-180 days	0	0.00%	0	0.00%
181 days or more	0	0.00%	0	0.00%
Total	124,340,992	100.00%	643	100.00%



■ Arrears

LMI Provider

LMI Provider	Balance	% Balance	Loan Count	% Loan Count
QBELMI	13,090,670	10.53%	66	12.45%
Genworth	110,822,868	89.13%	463	87.36%
PMI	427,454	0.34%	1	0.19%
No LMI / No Data	0	0.00%	0	0.00%
Total	124,340,992	100.00%	530	100.00%



■ LMI Provider

Property Occupancy

Property Occupancy	Balance	% Balance	Loan Count	% Loan Count
Investment	31,576,535	25.40%	151	23.48%
Owner Occupier	92,764,457	74.60%	492	76.52%
Total	124,340,992	100.00%	643	100.00%



■ Investment
■ Owner Occupier

Default Statistics

Default Data	Amount	No. of Loans
Defaulted Loans	0.00	0.00
Loss on Sale	0.00	0.00
Claims on LMI	0.00	0.00
Claims paid by LMI	0.00	0.00
Claims Denied/Reduced	0.00	0.00
Loss covered by Excess Spread	0.00	N/A