

**AFG 2013-1 Trust
Collateral Report**



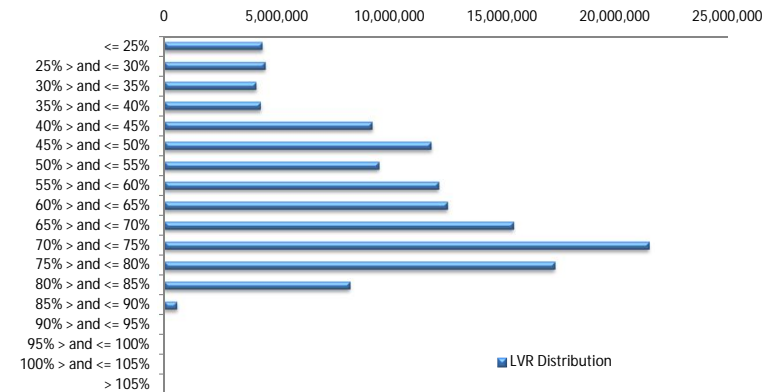
Model Period	29
Collection Period Start	01-Jul-15
Collection Period End	31-Jul-15
No. of Days	31
Interest Period Start	10-Jul-15
Interest Period End	09-Aug-15
No. of Days	31
Determination Date	05-Aug-15
Payment Date	10-Aug-15

Pool Statistics

Closing Balance of Mortgages	135,552,104
No. of Loans (Unconsolidated)	689
No. of Loans (Consolidated)	564
Average Loan Size (Unconsolidated)	196,737
Average Loan Size (Consolidated)	240,341
Largest Loan Size (Unconsolidated)	769,182
Largest Loan Size Consolidated)	774,919
Smallest Loan Size (Unconsolidated)	(1,010)
Smallest Loan Size (Consolidated)	(1,010)
Weighted Average Interest Rate	4.49%
Weighted Average LVR	59.72%
Weighted Average Seasoning	36.40
Weighted Average Remaining Term	315.34

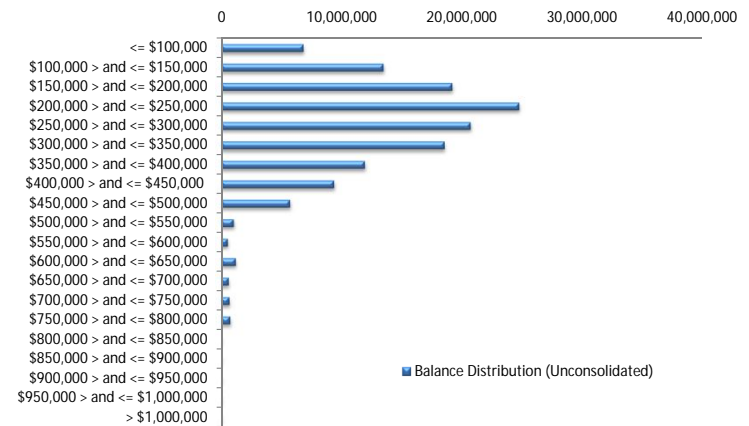
LVR Distribution

Current LTV	Balance	% Balance	Loan Count (Consol.)	% Loan Count
<= 25%	4,361,065	3.22%	58	10.28%
25% > and <= 30%	4,479,433	3.30%	30	5.32%
30% > and <= 35%	4,084,634	3.01%	25	4.43%
35% > and <= 40%	4,285,283	3.16%	25	4.43%
40% > and <= 45%	9,214,332	6.80%	43	7.62%
45% > and <= 50%	11,827,278	8.73%	46	8.16%
50% > and <= 55%	9,515,084	7.02%	38	6.74%
55% > and <= 60%	12,159,827	8.97%	48	8.51%
60% > and <= 65%	12,547,694	9.26%	47	8.33%
65% > and <= 70%	15,470,987	11.41%	57	10.11%
70% > and <= 75%	21,475,801	15.84%	68	12.06%
75% > and <= 80%	17,306,389	12.77%	54	9.57%
80% > and <= 85%	8,236,140	6.08%	23	4.08%
85% > and <= 90%	588,158	0.43%	2	0.35%
90% > and <= 95%	0	0.00%	0	0.00%
95% > and <= 100%	0	0.00%	0	0.00%
100% > and <= 105%	0	0.00%	0	0.00%
> 105%	0	0.00%	0	0.00%
Total	135,552,104	100.00%	564	100.00%



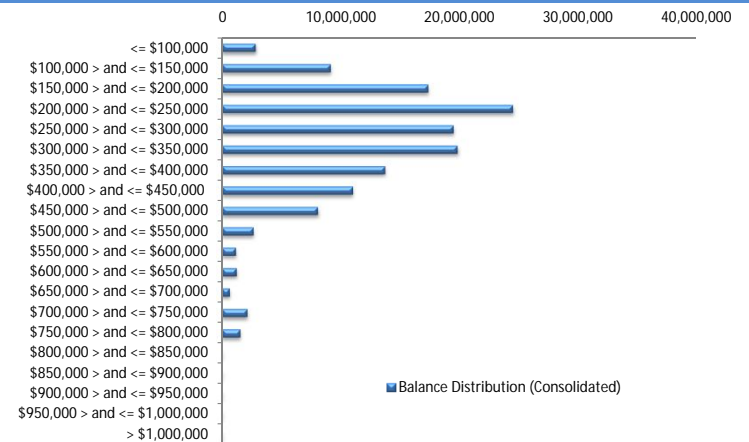
Balance Distribution (Unconsolidated)

Current Balance	Balance	% Balance	Loan Count	% Loan Count
<= \$100,000	6,845,155	5.05%	156	22.64%
\$100,000 > and <= \$150,000	13,474,822	9.94%	107	15.53%
\$150,000 > and <= \$200,000	19,184,588	14.15%	109	15.82%
\$200,000 > and <= \$250,000	24,726,555	18.24%	110	15.97%
\$250,000 > and <= \$300,000	20,700,329	15.27%	76	11.03%
\$300,000 > and <= \$350,000	18,544,640	13.68%	57	8.27%
\$350,000 > and <= \$400,000	11,934,654	8.80%	32	4.64%
\$400,000 > and <= \$450,000	9,381,145	6.92%	22	3.19%
\$450,000 > and <= \$500,000	5,729,631	4.23%	12	1.74%
\$500,000 > and <= \$550,000	1,073,188	0.79%	2	0.29%
\$550,000 > and <= \$600,000	577,950	0.43%	1	0.15%
\$600,000 > and <= \$650,000	1,236,943	0.91%	2	0.29%
\$650,000 > and <= \$700,000	655,309	0.48%	1	0.15%
\$700,000 > and <= \$750,000	718,016	0.53%	1	0.15%
\$750,000 > and <= \$800,000	769,182	0.57%	1	0.15%
\$800,000 > and <= \$850,000	0	0.00%	0	0.00%
\$850,000 > and <= \$900,000	0	0.00%	0	0.00%
\$900,000 > and <= \$950,000	0	0.00%	0	0.00%
\$950,000 > and <= \$1,000,000	0	0.00%	0	0.00%
> \$1,000,000	0	0.00%	0	0.00%
Total	135,552,104	100.00%	689	100.00%



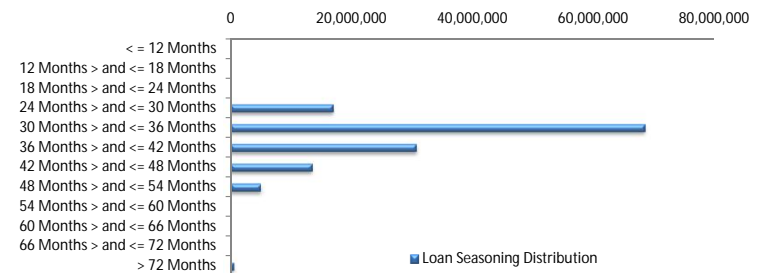
Balance Distribution (Consolidated)

Current Balance	Balance	% Balance	Loan Count (Consol.)	% Loan Count
<= \$100,000	2,829,551	2.09%	56	9.93%
\$100,000 > and <= \$150,000	9,161,777	6.76%	72	12.77%
\$150,000 > and <= \$200,000	17,391,776	12.83%	99	17.55%
\$200,000 > and <= \$250,000	24,523,200	18.09%	109	19.33%
\$250,000 > and <= \$300,000	19,517,476	14.40%	72	12.77%
\$300,000 > and <= \$350,000	19,859,602	14.65%	61	10.82%
\$350,000 > and <= \$400,000	13,749,184	10.14%	37	6.56%
\$400,000 > and <= \$450,000	11,037,963	8.14%	26	4.61%
\$450,000 > and <= \$500,000	8,085,884	5.97%	17	3.01%
\$500,000 > and <= \$550,000	2,652,947	1.96%	5	0.89%
\$550,000 > and <= \$600,000	1,171,523	0.86%	2	0.35%
\$600,000 > and <= \$650,000	1,230,312	0.91%	2	0.35%
\$650,000 > and <= \$700,000	655,309	0.48%	1	0.18%
\$700,000 > and <= \$750,000	2,141,498	1.58%	3	0.53%
\$750,000 > and <= \$800,000	1,544,101	1.14%	2	0.35%
\$800,000 > and <= \$850,000	0	0.00%	0	0.00%
\$850,000 > and <= \$900,000	0	0.00%	0	0.00%
\$900,000 > and <= \$950,000	0	0.00%	0	0.00%
\$950,000 > and <= \$1,000,000	0	0.00%	0	0.00%
> \$1,000,000	0	0.00%	0	0.00%
Total	135,552,104	100.00%	564	100.00%



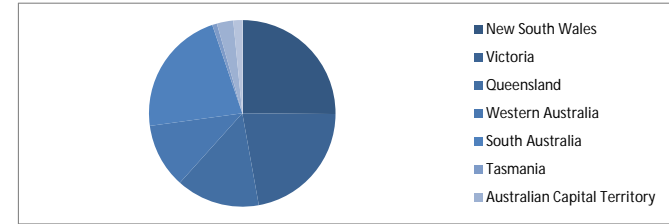
Loan Seasoning Distribution

Seasoning (Months)	Balance	% Balance	Loan Count	% Loan Count
<= 12 Months	0	0.00%	0	0.00%
12 Months > and <= 18 Months	0	0.00%	0	0.00%
18 Months > and <= 24 Months	0	0.00%	0	0.00%
24 Months > and <= 30 Months	17,043,827	12.57%	82	11.90%
30 Months > and <= 36 Months	68,435,038	50.49%	342	49.64%
36 Months > and <= 42 Months	30,760,081	22.69%	160	23.22%
42 Months > and <= 48 Months	13,598,051	10.03%	82	11.90%
48 Months > and <= 54 Months	5,105,835	3.77%	21	3.05%
54 Months > and <= 60 Months	0	0.00%	0	0.00%
60 Months > and <= 66 Months	0	0.00%	0	0.00%
66 Months > and <= 72 Months	0	0.00%	0	0.00%
> 72 Months	609,272	0.45%	2	0.29%
Total	135,552,104	100.00%	689	100.00%



Geographic Distribution

Jurisdiction State	Balance	% Balance	Loan Count (Consol.)	% Loan Count
New South Wales	34,043,262	25.11%	133	23.58%
Victoria	29,867,656	22.03%	118	20.92%
Queensland	19,642,520	14.49%	76	13.48%
Western Australia	15,210,169	11.22%	48	8.51%
South Australia	29,706,470	21.92%	163	28.90%
Tasmania	1,145,675	0.85%	6	1.06%
Australian Capital Territory	3,859,317	2.85%	12	2.13%
Northern Territory	2,077,035	1.53%	8	1.42%
No Data	0	0.00%	0	0.00%
Total	135,552,104	100.00%	564	100.00%



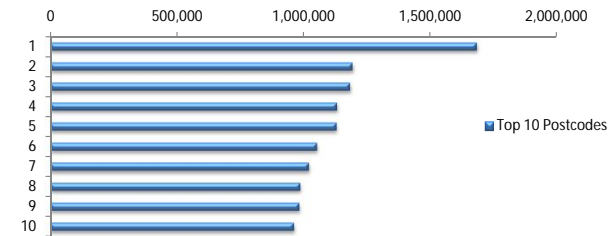
Locality

S&P Category	Balance	% Balance	Loan Count (Consol.)	% Loan Count
Metro	107,734,344	79.48%	449	79.61%
Non Metro	25,495,821	18.81%	109	19.33%
Inner City	2,321,939	1.71%	6	1.06%
No Data	0	0.00%	0	0.00%
Total	135,552,104	100.00%	564	100.00%



Top 10 Postcodes

Postcode	Balance	% Balance	Loan Count (Consol.)	% Loan Count
5108	1,683,069	1.24%	12	1.74%
6026	1,193,003	0.88%	4	0.58%
5085	1,183,232	0.87%	4	0.58%
6155	1,132,000	0.84%	3	0.44%
5114	1,130,142	0.83%	8	1.16%
2602	1,053,287	0.78%	2	0.29%
5043	1,021,165	0.75%	5	0.73%
5096	987,542	0.73%	6	0.87%
5097	983,325	0.73%	5	0.73%
6006	962,468	0.71%	2	0.29%
Total	11,329,234	8.36%	51	7.40%



Documentation

Document Type	Balance	% Balance	Loan Count	% Loan Count
Full Doc	135,552,104	100.00%	689	100.00%
Low Doc	0	0.00%	0	0.00%
No Doc	0	0.00%	0	0.00%
Total	135,552,104	100.00%	689	100.00%



Rate Type

Rate Type	Balance	% Balance	Loan Count	% Loan Count
Variable Rate	135,552,104	100.00%	689	100.00%
Fixed Rate	0	0.00%	0	0.00%
Total	135,552,104	100.00%	689	100.00%



Repayment Type

Repayment Type	Balance	% Balance	Loan Count	% Loan Count
Principal & Interest	103,131,299	76.08%	531	77.07%
Interest Only	31,433,018	23.19%	146	21.19%
Non-Billing	987,788	0.73%	12	1.74%
Total	135,552,104	100.00%	689	100.00%



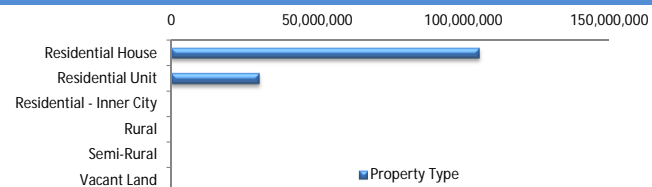
Loan Type

Product Category	Balance	% Balance	Loan Count	% Loan Count
Line of Credit	987,788	0.73%	12	1.74%
Term Loan	134,564,317	99.27%	677	98.26%
Total	135,552,104	100.00%	689	100.00%



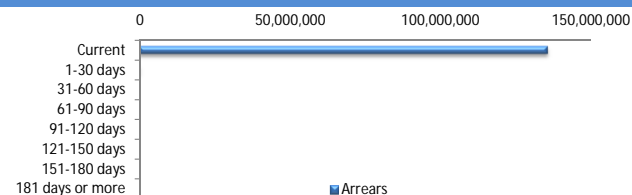
Property Type

Property Type	Balance	% Balance	Loan Count (Consol.)	% Loan Count
Residential House	105,508,259	77.84%	437	77.48%
Residential Unit	30,043,846	22.16%	127	22.52%
Residential - Inner City	0	0.00%	0	0.00%
Rural	0	0.00%	0	0.00%
Semi-Rural	0	0.00%	0	0.00%
Vacant Land	0	0.00%	0	0.00%
No Data	0	0.00%	0	0.00%
Total	135,552,104	100.00%	564	100.00%



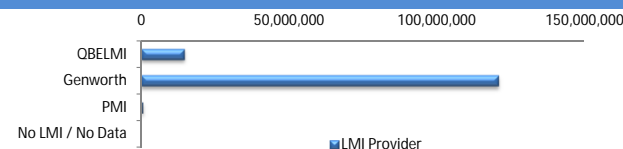
Arrears

Arrears Band	Balance	% Balance	Loan Count	% Loan Count
Current	135,312,264	99.82%	688	99.85%
1-30 days	239,840	0.18%	1	0.15%
31-60 days	0	0.00%	0	0.00%
61-90 days	0	0.00%	0	0.00%
91-120 days	0	0.00%	0	0.00%
121-150 days	0	0.00%	0	0.00%
151-180 days	0	0.00%	0	0.00%
181 days or more	0	0.00%	0	0.00%
Total	135,552,104	100.00%	689	100.00%



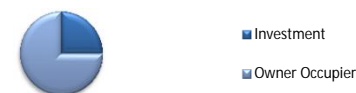
LMI Provider

LMI Provider	Balance	% Balance	Loan Count	% Loan Count
QBELMI	14,266,200	10.52%	70	12.41%
Genworth	120,858,423	89.16%	493	87.41%
PMI	427,481	0.32%	1	0.18%
No LMI / No Data	0	0.00%	0	0.00%
Total	135,552,104	100.00%	564	100.00%



Property Occupancy

Property Occupancy	Balance	% Balance	Loan Count	% Loan Count
Investment	34,032,588	25.11%	156	22.64%
Owner Occupier	101,519,517	74.89%	533	77.36%
Total	135,552,104	100.00%	689	100.00%



Default Statistics

Default Data	Amount	No. of Loans
Defaulted Loans	0.00	0.00
Loss on Sale	0.00	0.00
Claims on LMI	0.00	0.00
Claims paid by LMI	0.00	0.00
Claims Denied/Reduced	0.00	0.00
Loss covered by Excess Spread	0.00	N/A