

AFG 2013-1 Trust
Collateral Report



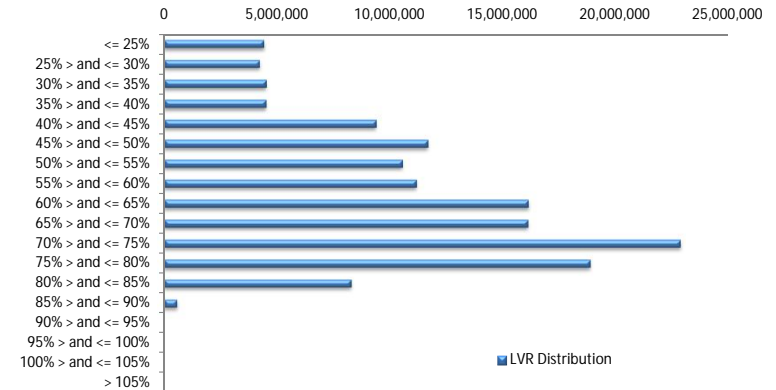
Model Period	27
Collection Period Start	01-May-15
Collection Period End	31-May-15
No. of Days	31
Interest Period Start	11-May-15
Interest Period End	09-Jun-15
No. of Days	30
Determination Date	04-Jun-15
Payment Date	10-Jun-15

Pool Statistics

Closing Balance of Mortgages	143,542,024
No. of Loans (Unconsolidated)	710
No. of Loans (Consolidated)	593
Average Loan Size (Unconsolidated)	202,172
Average Loan Size (Consolidated)	242,061
Largest Loan Size (Unconsolidated)	771,701
Largest Loan Size Consolidated)	775,437
Smallest Loan Size (Unconsolidated)	(279)
Smallest Loan Size (Consolidated)	(279)
Weighted Average Interest Rate	4.50%
Weighted Average LVR	60.01%
Weighted Average Seasoning	34.45
Weighted Average Remaining Term	316.94

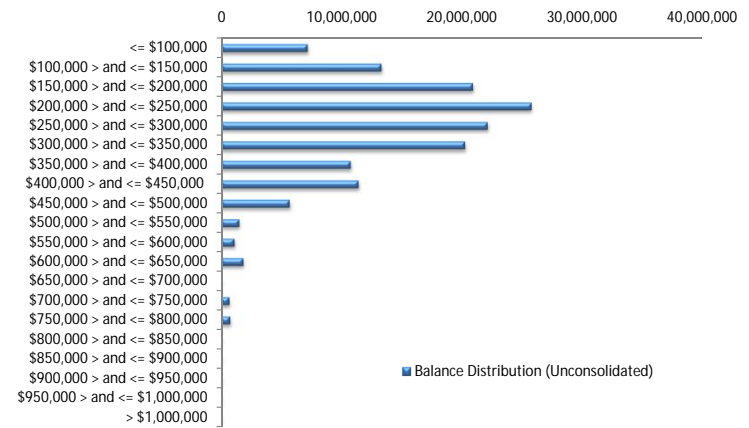
LVR Distribution

Current LTV	Balance	% Balance	Loan Count (Consol.)	% Loan Count
<= 25%	4,433,228	3.09%	60	10.12%
25% > and <= 30%	4,244,522	2.96%	27	4.55%
30% > and <= 35%	4,537,720	3.16%	29	4.89%
35% > and <= 40%	4,524,270	3.15%	28	4.72%
40% > and <= 45%	9,405,905	6.55%	41	6.91%
45% > and <= 50%	11,703,604	8.15%	47	7.93%
50% > and <= 55%	10,568,337	7.36%	42	7.08%
55% > and <= 60%	11,192,335	7.80%	44	7.42%
60% > and <= 65%	16,150,653	11.25%	58	9.78%
65% > and <= 70%	16,127,068	11.24%	62	10.46%
70% > and <= 75%	22,880,629	15.94%	71	11.97%
75% > and <= 80%	18,889,931	13.16%	58	9.78%
80% > and <= 85%	8,295,574	5.78%	24	4.05%
85% > and <= 90%	588,249	0.41%	2	0.34%
90% > and <= 95%	0	0.00%	0	0.00%
95% > and <= 100%	0	0.00%	0	0.00%
100% > and <= 105%	0	0.00%	0	0.00%
> 105%	0	0.00%	0	0.00%
Total	143,542,024	100.00%	593	100.00%



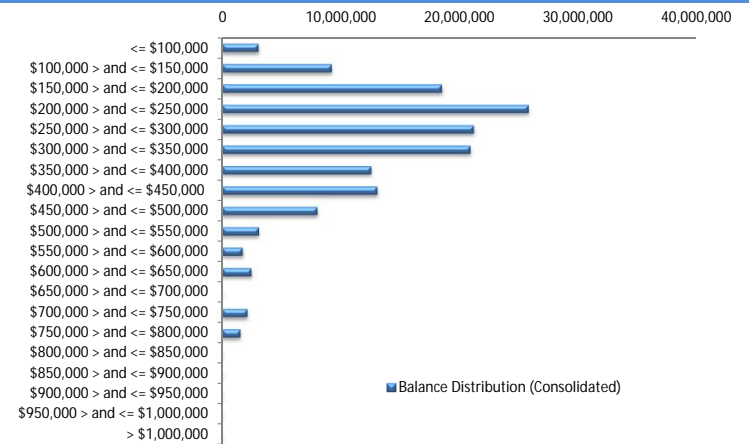
Balance Distribution (Unconsolidated)

Current Balance	Balance	% Balance	Loan Count	% Loan Count
<= \$100,000	7,208,166	5.02%	150	21.13%
\$100,000 > and <= \$150,000	13,320,298	9.28%	106	14.93%
\$150,000 > and <= \$200,000	20,921,564	14.58%	119	16.76%
\$200,000 > and <= \$250,000	25,777,652	17.96%	114	16.06%
\$250,000 > and <= \$300,000	22,141,652	15.43%	81	11.41%
\$300,000 > and <= \$350,000	20,264,760	14.12%	62	8.73%
\$350,000 > and <= \$400,000	10,770,756	7.50%	29	4.08%
\$400,000 > and <= \$450,000	11,422,199	7.96%	27	3.80%
\$450,000 > and <= \$500,000	5,700,995	3.97%	12	1.69%
\$500,000 > and <= \$550,000	1,528,305	1.06%	3	0.42%
\$550,000 > and <= \$600,000	1,129,841	0.79%	2	0.28%
\$600,000 > and <= \$650,000	1,866,531	1.30%	3	0.42%
\$650,000 > and <= \$700,000	0	0.00%	0	0.00%
\$700,000 > and <= \$750,000	717,604	0.50%	1	0.14%
\$750,000 > and <= \$800,000	771,701	0.54%	1	0.14%
\$800,000 > and <= \$850,000	0	0.00%	0	0.00%
\$850,000 > and <= \$900,000	0	0.00%	0	0.00%
\$900,000 > and <= \$950,000	0	0.00%	0	0.00%
\$950,000 > and <= \$1,000,000	0	0.00%	0	0.00%
> \$1,000,000	0	0.00%	0	0.00%
Total	143,542,024	100.00%	710	100.00%



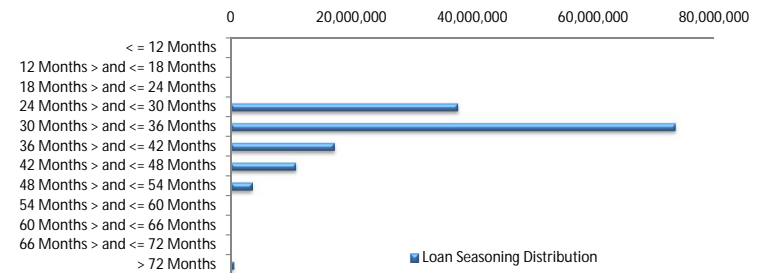
Balance Distribution (Consolidated)

Current Balance	Balance	% Balance	Loan Count (Consol.)	% Loan Count
<= \$100,000	3,067,594	2.14%	60	10.12%
\$100,000 > and <= \$150,000	9,234,845	6.43%	72	12.14%
\$150,000 > and <= \$200,000	18,526,650	12.91%	105	17.71%
\$200,000 > and <= \$250,000	25,835,063	18.00%	114	19.22%
\$250,000 > and <= \$300,000	21,215,786	14.78%	78	13.15%
\$300,000 > and <= \$350,000	20,942,344	14.59%	64	10.79%
\$350,000 > and <= \$400,000	12,584,772	8.77%	34	5.73%
\$400,000 > and <= \$450,000	13,086,264	9.12%	31	5.23%
\$450,000 > and <= \$500,000	8,040,804	5.60%	17	2.87%
\$500,000 > and <= \$550,000	3,114,392	2.17%	6	1.01%
\$550,000 > and <= \$600,000	1,728,909	1.20%	3	0.51%
\$600,000 > and <= \$650,000	2,473,383	1.72%	4	0.67%
\$650,000 > and <= \$700,000	0	0.00%	0	0.00%
\$700,000 > and <= \$750,000	2,144,080	1.49%	3	0.51%
\$750,000 > and <= \$800,000	1,547,138	1.08%	2	0.34%
\$800,000 > and <= \$850,000	0	0.00%	0	0.00%
\$850,000 > and <= \$900,000	0	0.00%	0	0.00%
\$900,000 > and <= \$950,000	0	0.00%	0	0.00%
\$950,000 > and <= \$1,000,000	0	0.00%	0	0.00%
> \$1,000,000	0	0.00%	0	0.00%
Total	143,542,024	100.00%	593	100.00%



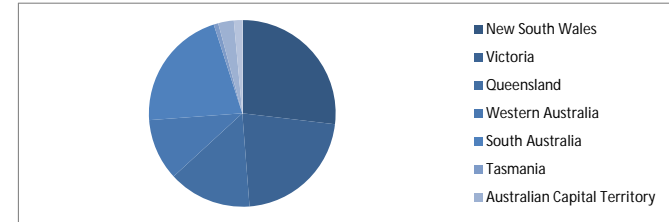
Loan Seasoning Distribution

Seasoning (Months)	Balance	% Balance	Loan Count	% Loan Count
<= 12 Months	0	0.00%	0	0.00%
12 Months > and <= 18 Months	0	0.00%	0	0.00%
18 Months > and <= 24 Months	0	0.00%	0	0.00%
24 Months > and <= 30 Months	37,570,077	26.17%	183	25.77%
30 Months > and <= 36 Months	73,474,916	51.19%	352	49.58%
36 Months > and <= 42 Months	17,244,412	12.01%	99	13.94%
42 Months > and <= 48 Months	10,930,981	7.62%	60	8.45%
48 Months > and <= 54 Months	3,712,280	2.59%	14	1.97%
54 Months > and <= 60 Months	0	0.00%	0	0.00%
60 Months > and <= 66 Months	0	0.00%	0	0.00%
66 Months > and <= 72 Months	0	0.00%	0	0.00%
> 72 Months	609,358	0.42%	2	0.28%
Total	143,542,024	100.00%	710	100.00%



Geographic Distribution

Jurisdiction State	Balance	% Balance	Loan Count (Consol.)	% Loan Count
New South Wales	38,573,087	26.87%	148	24.96%
Victoria	31,434,334	21.90%	125	21.08%
Queensland	20,673,744	14.40%	80	13.49%
Western Australia	15,319,047	10.67%	48	8.09%
South Australia	30,423,484	21.19%	166	27.99%
Tasmania	1,149,115	0.80%	6	1.01%
Australian Capital Territory	3,877,536	2.70%	12	2.02%
Northern Territory	2,091,679	1.46%	8	1.35%
No Data	0	0.00%	0	0.00%
Total	143,542,024	100.00%	593	100.00%



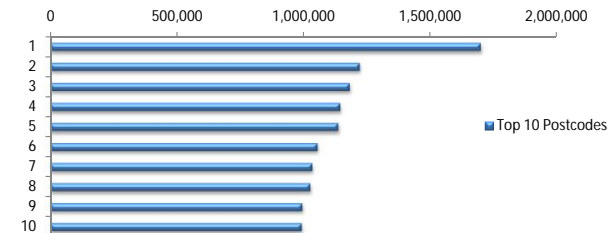
Locality

S&P Category	Balance	% Balance	Loan Count (Consol.)	% Loan Count
Metro	114,220,460	79.57%	470	79.26%
Non Metro	26,998,370	18.81%	117	19.73%
Inner City	2,323,195	1.62%	6	1.01%
Total	143,542,024	100.00%	593	100.00%



Top 10 Postcodes

Postcode	Balance	% Balance	Loan Count (Consol.)	% Loan Count
5108	1,700,353	1.18%	12	1.69%
6026	1,222,697	0.85%	4	0.56%
5085	1,183,377	0.82%	4	0.56%
5114	1,145,903	0.80%	8	1.13%
6155	1,137,577	0.79%	3	0.42%
2602	1,056,635	0.74%	2	0.28%
5107	1,035,489	0.72%	5	0.70%
5043	1,027,365	0.72%	5	0.70%
5096	995,825	0.69%	6	0.85%
5097	993,888	0.69%	5	0.70%
Total	11,499,108	8.01%	54	7.61%



Documentation

Document Type	Balance	% Balance	Loan Count	% Loan Count
Full Doc	143,542,024	100.00%	710	100.00%
Low Doc	0	0.00%	0	0.00%
No Doc	0	0.00%	0	0.00%
Total	143,542,024	100.00%	710	100.00%



Rate Type

Rate Type	Balance	% Balance	Loan Count	% Loan Count
Variable Rate	143,542,024	100.00%	710	100.00%
Fixed Rate	0	0.00%	0	0.00%
Total	143,542,024	100.00%	710	100.00%



Repayment Type

Repayment Type	Balance	% Balance	Loan Count	% Loan Count
Principal & Interest	110,293,519	76.84%	548	77.18%
Interest Only	32,236,829	22.46%	149	20.99%
Non-Billing	1,011,676	0.70%	13	1.83%
Total	143,542,024	100.00%	710	100.00%



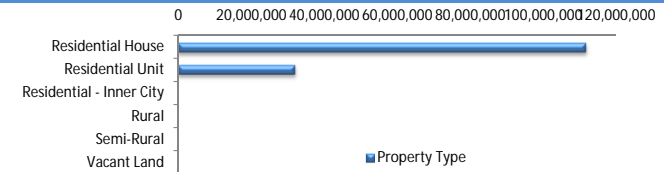
Loan Type

Product Category	Balance	% Balance	Loan Count	% Loan Count
Line of Credit	1,011,676	0.70%	13	1.83%
Term Loan	142,530,348	99.30%	697	98.17%
Total	143,542,024	100.00%	710	100.00%



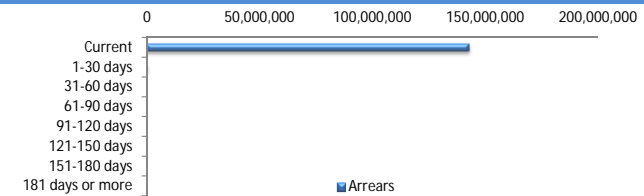
Property Type

Property Type	Balance	% Balance	Loan Count (Consol.)	% Loan Count
Residential House	111,665,179	77.79%	460	77.57%
Residential Unit	31,876,846	22.21%	133	22.43%
Residential - Inner City	0	0.00%	0	0.00%
Rural	0	0.00%	0	0.00%
Semi-Rural	0	0.00%	0	0.00%
Vacant Land	0	0.00%	0	0.00%
Total	143,542,024	100.00%	593	100.00%



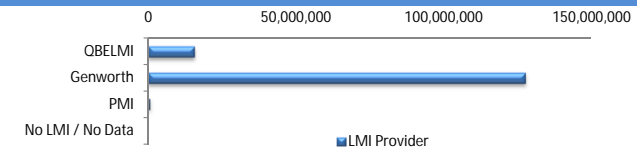
Arrears

Arrears Band	Balance	% Balance	Loan Count	% Loan Count
Current	142,971,621	99.60%	708	99.72%
1-30 days	570,403	0.40%	2	0.28%
31-60 days	0	0.00%	0	0.00%
61-90 days	0	0.00%	0	0.00%
91-120 days	0	0.00%	0	0.00%
121-150 days	0	0.00%	0	0.00%
151-180 days	0	0.00%	0	0.00%
181 days or more	0	0.00%	0	0.00%
Total	143,542,024	100.00%	710	100.00%



LMI Provider

LMI Provider	Balance	% Balance	Loan Count	% Loan Count
QBELMI	15,440,012	10.76%	74	12.48%
Genworth	127,674,471	88.95%	518	87.35%
PMI	427,541	0.30%	1	0.17%
No LMI / No Data	0	0.00%	0	0.00%
Total	143,542,024	100.00%	593	100.00%



Property Occupancy

Property Occupancy	Balance	% Balance	Loan Count	% Loan Count
Investment	35,814,444	24.95%	162	22.82%
Owner Occupier	107,727,581	75.05%	548	77.18%
Total	143,542,024	100.00%	710	100.00%



Default Statistics

Default Data	Amount	No. of Loans
Defaulted Loans	0.00	0.00
Loss on Sale	0.00	0.00
Claims on LMI	0.00	0.00
Claims paid by LMI	0.00	0.00
Claims Denied/Reduced	0.00	0.00
Loss covered by Excess Spread	0.00	N/A