

AFG Series 2013-2
Collateral Report



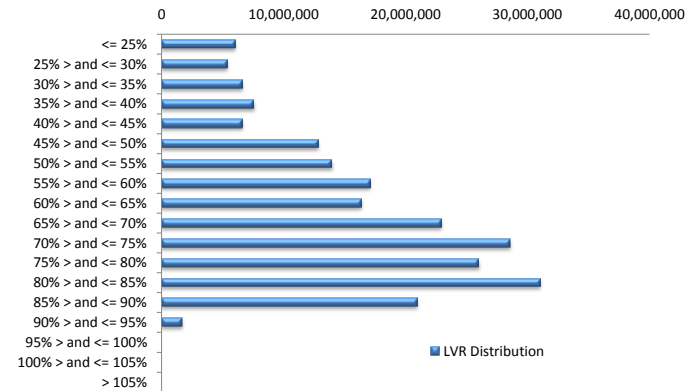
Model Period	12
Collection Period Start	1-Oct-14
Collection Period End	31-Oct-14
No. of Days	31
Interest Period Start	14-Oct-14
Interest Period End	13-Nov-14
No. of Days	31
Determination Date	11-Nov-14
Payment Date	14-Nov-14

Pool Statistics

Closing Balance of Mortgages	223,415,732
No. of Loans (Unconsolidated)	899
No. of Loans (Consolidated)	755
Average Loan Size (Unconsolidated)	248,516
Average Loan Size (Consolidated)	295,915
Largest Loan Size (Unconsolidated)	1,072,886
Largest Loan Size (Consolidated)	1,072,886
Smallest Loan Size (Unconsolidated)	(1,905)
Smallest Loan Size (Consolidated)	0
Weighted Average Interest Rate	4.90%
Weighted Average LVR	65.05%
Weighted Average Seasoning	22.55

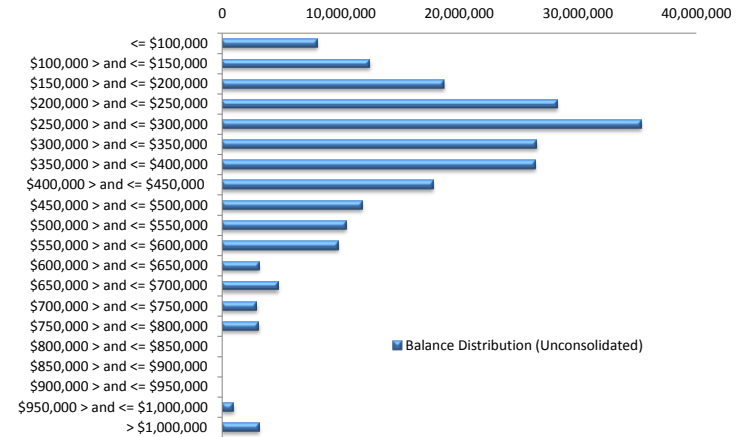
LVR Distribution

Current LTV	Balance	% Balance	Loan Count (Consol.)	% Loan Count
<= 25%	6,037,358	2.70%	71	9.40%
25% > and <= 30%	5,352,092	2.40%	30	3.97%
30% > and <= 35%	6,580,019	2.95%	32	4.24%
35% > and <= 40%	7,542,481	3.38%	40	5.30%
40% > and <= 45%	6,619,938	2.96%	30	3.97%
45% > and <= 50%	12,814,411	5.74%	48	6.36%
50% > and <= 55%	13,942,150	6.24%	46	6.09%
55% > and <= 60%	17,085,254	7.65%	53	7.02%
60% > and <= 65%	16,391,667	7.34%	47	6.23%
65% > and <= 70%	22,897,196	10.25%	62	8.21%
70% > and <= 75%	28,527,089	12.77%	77	10.20%
75% > and <= 80%	25,977,707	11.63%	67	8.87%
80% > and <= 85%	31,031,181	13.89%	84	11.13%
85% > and <= 90%	20,939,295	9.37%	63	8.34%
90% > and <= 95%	1,677,894	0.75%	5	0.66%
95% > and <= 100%	0	0.00%	0	0.00%
100% > and <= 105%	0	0.00%	0	0.00%
> 105%	0	0.00%	0	0.00%
Total	223,415,732	100.00%	755	100.00%



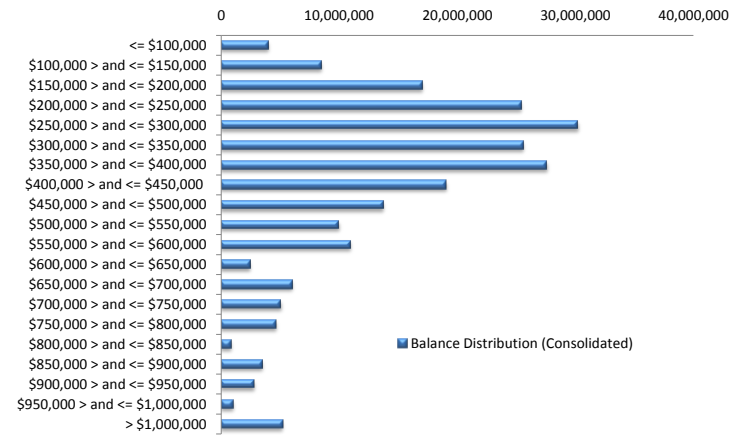
Balance Distribution (Unconsolidated)

Current Balance	Balance	% Balance	Loan Count	% Loan Count
<= \$100,000	7,990,078	3.58%	158	17.58%
\$100,000 > and <= \$150,000	12,427,979	5.56%	99	11.01%
\$150,000 > and <= \$200,000	18,702,793	8.37%	107	11.90%
\$200,000 > and <= \$250,000	28,301,053	12.67%	126	14.02%
\$250,000 > and <= \$300,000	35,364,234	15.83%	129	14.35%
\$300,000 > and <= \$350,000	26,522,123	11.87%	82	9.12%
\$350,000 > and <= \$400,000	26,411,475	11.82%	70	7.79%
\$400,000 > and <= \$450,000	17,807,316	7.97%	42	4.67%
\$450,000 > and <= \$500,000	11,798,056	5.28%	25	2.78%
\$500,000 > and <= \$550,000	10,451,753	4.68%	20	2.22%
\$550,000 > and <= \$600,000	9,761,508	4.37%	17	1.89%
\$600,000 > and <= \$650,000	3,116,299	1.39%	5	0.56%
\$650,000 > and <= \$700,000	4,689,122	2.10%	7	0.78%
\$700,000 > and <= \$750,000	2,912,755	1.30%	4	0.44%
\$750,000 > and <= \$800,000	3,083,812	1.38%	4	0.44%
\$800,000 > and <= \$850,000	0	0.00%	0	0.00%
\$850,000 > and <= \$900,000	0	0.00%	0	0.00%
\$900,000 > and <= \$950,000	0	0.00%	0	0.00%
\$950,000 > and <= \$1,000,000	954,804	0.43%	1	0.11%
> \$1,000,000	3,120,573	1.40%	3	0.33%
Total	223,415,732	100.00%	899	100.00%



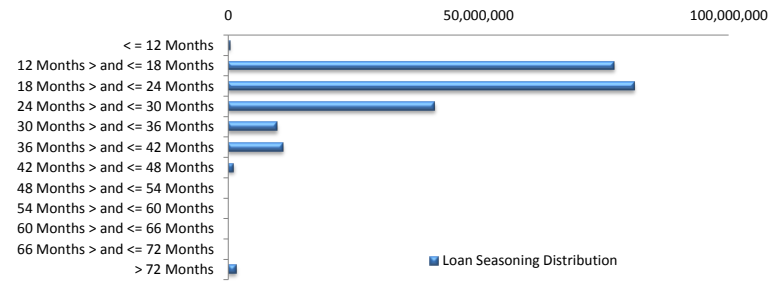
Balance Distribution (Consolidated)

Current Balance	Balance	% Balance	Loan Count (Consol.)	% Loan Count
<= \$100,000	4,018,206	1.80%	66	8.74%
\$100,000 > and <= \$150,000	8,437,874	3.78%	66	8.74%
\$150,000 > and <= \$200,000	17,017,641	7.62%	97	12.85%
\$200,000 > and <= \$250,000	25,412,649	11.37%	112	14.83%
\$250,000 > and <= \$300,000	30,192,598	13.51%	110	14.57%
\$300,000 > and <= \$350,000	25,583,246	11.45%	79	10.46%
\$350,000 > and <= \$400,000	27,562,184	12.34%	73	9.67%
\$400,000 > and <= \$450,000	19,068,657	8.54%	45	5.96%
\$450,000 > and <= \$500,000	13,738,935	6.15%	29	3.84%
\$500,000 > and <= \$550,000	9,975,618	4.47%	19	2.52%
\$550,000 > and <= \$600,000	10,908,978	4.88%	19	2.52%
\$600,000 > and <= \$650,000	2,452,845	1.10%	4	0.53%
\$650,000 > and <= \$700,000	6,038,715	2.70%	9	1.19%
\$700,000 > and <= \$750,000	5,045,202	2.26%	7	0.93%
\$750,000 > and <= \$800,000	4,633,556	2.07%	6	0.79%
\$800,000 > and <= \$850,000	845,623	0.38%	1	0.13%
\$850,000 > and <= \$900,000	3,496,774	1.57%	4	0.53%
\$900,000 > and <= \$950,000	2,792,280	1.25%	3	0.40%
\$950,000 > and <= \$1,000,000	984,986	0.44%	1	0.13%
> \$1,000,000	5,209,165	2.33%	5	0.66%
Total	223,415,732	100.00%	755	100.00%



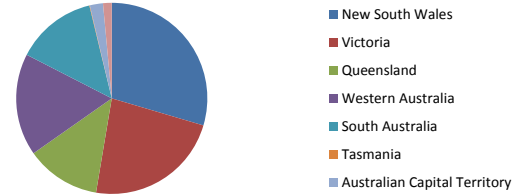
Loan Seasoning Distribution

Seasoning (Months)	Balance	% Balance	Loan Count	% Loan Count
<= 12 Months	400,878	0.18%	2	0.22%
12 Months > and <= 18 Months	77,054,944	34.49%	307	34.15%
18 Months > and <= 24 Months	81,151,366	36.32%	321	35.71%
24 Months > and <= 30 Months	41,322,690	18.50%	157	17.46%
30 Months > and <= 36 Months	9,679,377	4.33%	51	5.67%
36 Months > and <= 42 Months	11,012,530	4.93%	50	5.56%
42 Months > and <= 48 Months	1,145,152	0.51%	4	0.44%
48 Months > and <= 54 Months	0	0.00%	0	0.00%
54 Months > and <= 60 Months	0	0.00%	0	0.00%
60 Months > and <= 66 Months	0	0.00%	0	0.00%
66 Months > and <= 72 Months	0	0.00%	0	0.00%
> 72 Months	1,648,794	0.74%	7	0.78%
Total	223,415,732	100.00%	899	100.00%



Geographic Distribution

Jurisdiction State	Balance	% Balance	Loan Count (Consol.)	% Loan Count
New South Wales	66,065,845	29.57%	210	27.81%
Victoria	51,531,872	23.07%	192	25.43%
Queensland	28,199,324	12.62%	96	12.72%
Western Australia	38,612,201	17.28%	104	13.77%
South Australia	30,572,424	13.68%	130	17.22%
Tasmania	204,200	0.09%	2	0.26%
Australian Capital Territory	4,949,462	2.22%	15	1.99%
Northern Territory	3,280,404	1.47%	6	0.79%
No Data	0	0.00%	0	0.00%
Total	223,415,732	100.00%	755	100.00%



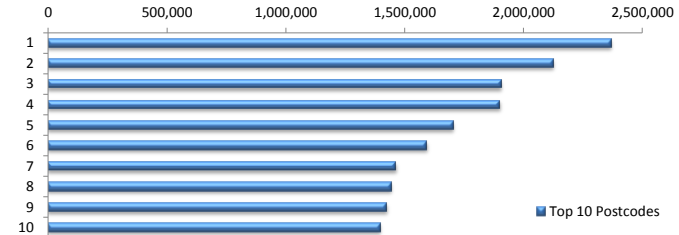
Locality

S&P Category	Balance	% Balance	Loan Count (Consol.)	% Loan Count
Metro	181,196,664	81.10%	594	78.68%
Non Metro	38,040,194	17.03%	151	20.00%
Inner City	4,178,874	1.87%	10	1.32%
Total	223,415,732	100.00%	755	100.00%



Top 10 Postcodes

Postcode	Balance	% Balance	Loan Count (Consol.)	% Loan Count
6065	2,368,391	1.06%	4	0.44%
6030	2,124,722	0.95%	5	0.56%
6164	1,904,971	0.85%	5	0.56%
2913	1,900,984	0.85%	6	0.67%
3216	1,702,767	0.76%	5	0.56%
2170	1,593,718	0.71%	5	0.56%
2031	1,462,255	0.65%	3	0.33%
820	1,443,977	0.65%	2	0.22%
2515	1,423,604	0.64%	6	0.67%
2560	1,398,160	0.63%	5	0.56%
Total	17,323,548	7.75%	46	5.12%



Documentation

Document Type	Balance	% Balance	Loan Count	% Loan Count
Full Doc	223,415,732	100.00%	899	100.00%
Low Doc	0	0.00%	0	0.00%
No Doc	0	0.00%	0	0.00%
Total	223,415,732	100.00%	899	100.00%



Rate Type

Rate Type	Balance	% Balance	Loan Count	% Loan Count
Variable Rate	223,415,732	100.00%	899	100.00%
Fixed Rate	0	0.00%	0	0.00%
Total	223,415,732	100.00%	899	100.00%



Repayment Type

Repayment Type	Balance	% Balance	Loan Count	% Loan Count
Principal & Interest	180,041,757	80.59%	717	79.76%
Interest Only	42,350,595	18.96%	165	18.35%
Non-Billing	1,023,380	0.46%	17	1.89%
Total	223,415,732	100.00%	899	100.00%



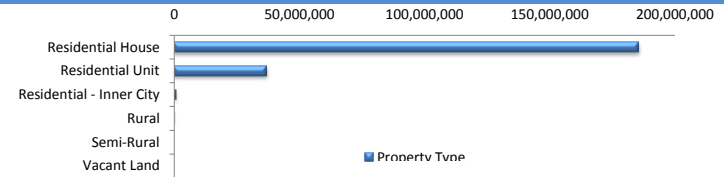
Loan Type

Product Category	Balance	% Balance	Loan Count	% Loan Count
Line of Credit	1,023,380	0.46%	17	1.89%
Term Loan	222,392,352	99.54%	882	98.11%
Total	223,415,732	100.00%	899	100.00%



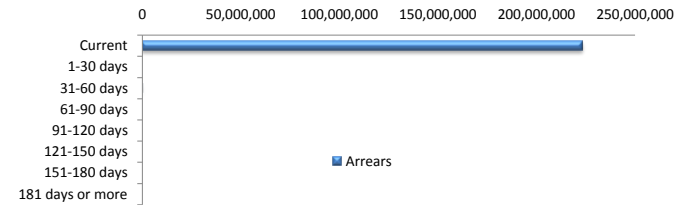
Property Type

Property Type	Balance	% Balance	Loan Count (Consol.)	% Loan Count
Residential House	185,716,978	83.13%	612	81.06%
Residential Unit	36,970,617	16.55%	140	18.54%
Residential - Inner City	721,818	0.32%	2	0.26%
Rural	6,319	0.00%	1	0.13%
Semi-Rural	0	0.00%	0	0.00%
Vacant Land	0	0.00%	0	0.00%
Total	223,415,732	100.00%	755	100.00%



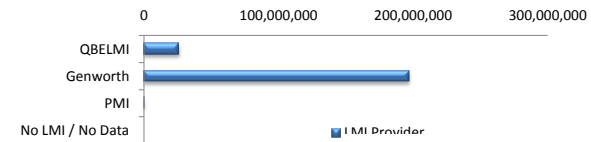
Arrears

Arrears Band	Balance	% Balance	Loan Count	% Loan Count
Current	223,286,347	99.94%	898	99.89%
1-30 days	0	0.00%	0	0.00%
31-60 days	129,385	0.06%	1	0.11%
61-90 days	0	0.00%	0	0.00%
91-120 days	0	0.00%	0	0.00%
121-150 days	0	0.00%	0	0.00%
151-180 days	0	0.00%	0	0.00%
181 days or more	0	0.00%	0	0.00%
Total	223,415,732	100.00%	899	100.00%



LMI Provider

LMI Provider	Balance	% Balance	Loan Count (Consol.)	% Loan Count
QBELMI	25,951,899	11.62%	88	11.66%
Genworth	196,850,135	88.11%	665	88.08%
PMI	613,698	0.27%	2	0.26%
No LMI / No Data	0	0.00%	0	0.00%
Total	223,415,732	100.00%	755	100.00%



Property Occupancy

Property Occupancy	Balance	% Balance	Loan Count	% Loan Count
Investment	50,021,348	22.39%	195	21.69%
Owner Occupier	173,394,384	77.61%	704	78.31%
Total	223,415,732	100.00%	899	100.00%



Default Statistics

Default Data	Amount	No. of Loans
Defaulted Loans	0.00	0.00
Loss on Sale	0.00	0.00
Claims on LMI	0.00	0.00
Claims paid by LMI	0.00	0.00
Claims Denied/Reduced	0.00	0.00
Loss covered by Excess Spread	0.00	N/A