

AFG 2013-1 Trust
Collateral Report

Model Period	20
Collection Period Start	01-Oct-14
Collection Period End	31-Oct-14
No. of Days	31
Interest Period Start	10-Oct-14
Interest Period End	09-Nov-14
No. of Days	31
Determination Date	05-Nov-14
Payment Date	10-Nov-14

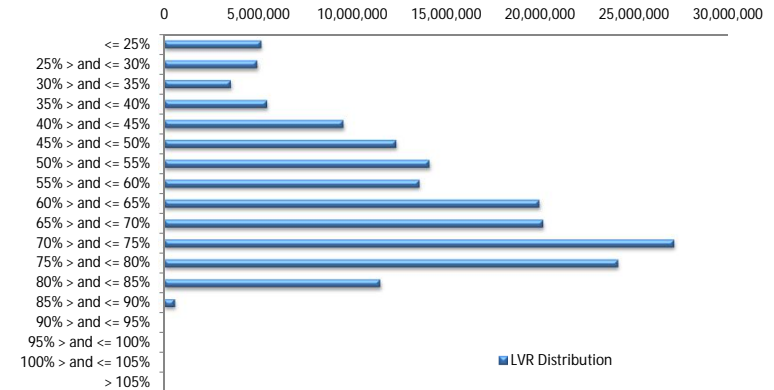


Pool Statistics

Closing Balance of Mortgages	172,249,609
No. of Loans (Unconsolidated)	809
No. of Loans (Consolidated)	676
Average Loan Size (Unconsolidated)	212,917
Average Loan Size (Consolidated)	254,807
Largest Loan Size (Unconsolidated)	779,817
Largest Loan Size Consolidated)	779,817
Smallest Loan Size (Unconsolidated)	(18,666)
Smallest Loan Size (Consolidated)	(9,341)
Weighted Average Interest Rate	4.94%
Weighted Average LVR	60.99%
Weighted Average Seasoning	27.28

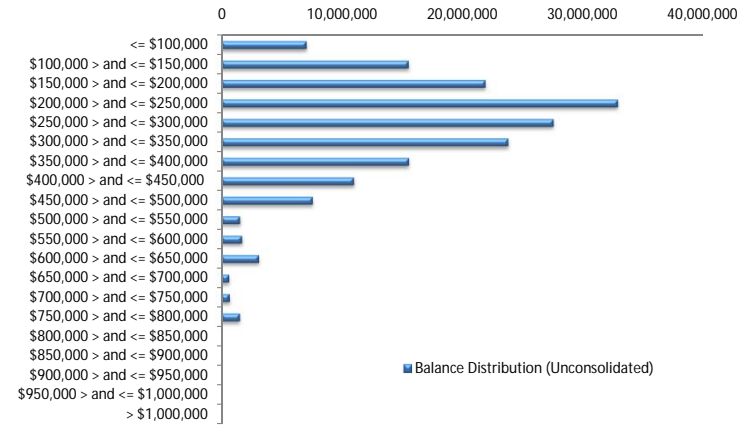
LVR Distribution

Current LTV	Balance	% Balance	Loan Count (Consol.)	% Loan Count
<= 25%	5,183,695	3.01%	56	8.28%
25% > and <= 30%	4,965,453	2.88%	32	4.73%
30% > and <= 35%	3,559,843	2.07%	21	3.11%
35% > and <= 40%	5,484,148	3.18%	31	4.59%
40% > and <= 45%	9,537,996	5.54%	43	6.36%
45% > and <= 50%	12,345,797	7.17%	48	7.10%
50% > and <= 55%	14,111,376	8.19%	56	8.28%
55% > and <= 60%	13,581,594	7.88%	53	7.84%
60% > and <= 65%	19,955,696	11.59%	70	10.36%
65% > and <= 70%	20,161,946	11.71%	72	10.65%
70% > and <= 75%	27,128,081	15.75%	86	12.72%
75% > and <= 80%	24,144,521	14.02%	74	10.95%
80% > and <= 85%	11,501,076	6.68%	32	4.73%
85% > and <= 90%	588,386	0.34%	2	0.30%
90% > and <= 95%	0	0.00%	0	0.00%
95% > and <= 100%	0	0.00%	0	0.00%
100% > and <= 105%	0	0.00%	0	0.00%
> 105%	0	0.00%	0	0.00%
Total	172,249,609	100.00%	676	100.00%



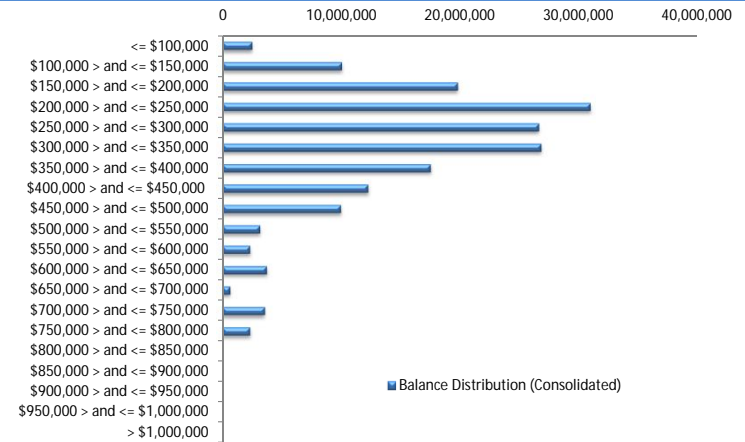
Balance Distribution (Unconsolidated)

Current Balance	Balance	% Balance	Loan Count	% Loan Count
<= \$100,000	7,074,294	4.11%	143	17.68%
\$100,000 > and <= \$150,000	15,537,539	9.02%	123	15.20%
\$150,000 > and <= \$200,000	21,898,325	12.71%	125	15.45%
\$200,000 > and <= \$250,000	32,878,384	19.09%	146	18.05%
\$250,000 > and <= \$300,000	27,544,537	15.99%	100	12.36%
\$300,000 > and <= \$350,000	23,789,957	13.81%	73	9.02%
\$350,000 > and <= \$400,000	15,560,237	9.03%	42	5.19%
\$400,000 > and <= \$450,000	10,999,521	6.39%	26	3.21%
\$450,000 > and <= \$500,000	7,595,219	4.41%	16	1.98%
\$500,000 > and <= \$550,000	1,566,966	0.91%	3	0.37%
\$550,000 > and <= \$600,000	1,736,585	1.01%	3	0.37%
\$600,000 > and <= \$650,000	3,139,124	1.82%	5	0.62%
\$650,000 > and <= \$700,000	666,841	0.39%	1	0.12%
\$700,000 > and <= \$750,000	706,168	0.41%	1	0.12%
\$750,000 > and <= \$800,000	1,555,913	0.90%	2	0.25%
\$800,000 > and <= \$850,000	0	0.00%	0	0.00%
\$850,000 > and <= \$900,000	0	0.00%	0	0.00%
\$900,000 > and <= \$950,000	0	0.00%	0	0.00%
\$950,000 > and <= \$1,000,000	0	0.00%	0	0.00%
> \$1,000,000	0	0.00%	0	0.00%
Total	172,249,609	100.00%	809	100.00%



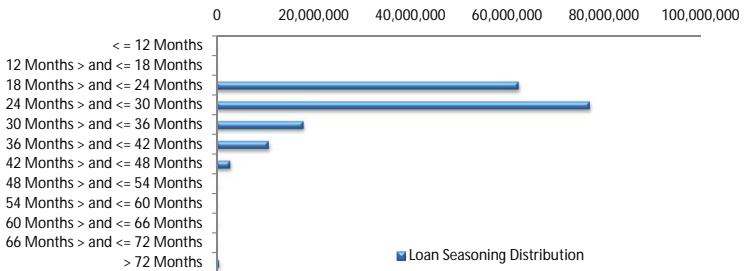
Balance Distribution (Consolidated)

Current Balance	Balance	% Balance	Loan Count (Consol.)	% Loan Count
<= \$100,000	2,511,184	1.46%	46	6.80%
\$100,000 > and <= \$150,000	10,053,280	5.84%	79	11.69%
\$150,000 > and <= \$200,000	19,798,227	11.49%	113	16.72%
\$200,000 > and <= \$250,000	30,935,384	17.96%	137	20.27%
\$250,000 > and <= \$300,000	26,605,727	15.45%	97	14.35%
\$300,000 > and <= \$350,000	26,795,923	15.56%	82	12.13%
\$350,000 > and <= \$400,000	17,507,261	10.16%	47	6.95%
\$400,000 > and <= \$450,000	12,251,812	7.11%	29	4.29%
\$450,000 > and <= \$500,000	9,967,776	5.79%	21	3.11%
\$500,000 > and <= \$550,000	3,171,203	1.84%	6	0.89%
\$550,000 > and <= \$600,000	2,330,656	1.35%	4	0.59%
\$600,000 > and <= \$650,000	3,744,403	2.17%	6	0.89%
\$650,000 > and <= \$700,000	666,841	0.39%	1	0.15%
\$700,000 > and <= \$750,000	3,577,111	2.08%	5	0.74%
\$750,000 > and <= \$800,000	2,332,821	1.35%	3	0.44%
\$800,000 > and <= \$850,000	0	0.00%	0	0.00%
\$850,000 > and <= \$900,000	0	0.00%	0	0.00%
\$900,000 > and <= \$950,000	0	0.00%	0	0.00%
\$950,000 > and <= \$1,000,000	0	0.00%	0	0.00%
> \$1,000,000	0	0.00%	0	0.00%
Total	172,249,609	100.00%	676	100.00%



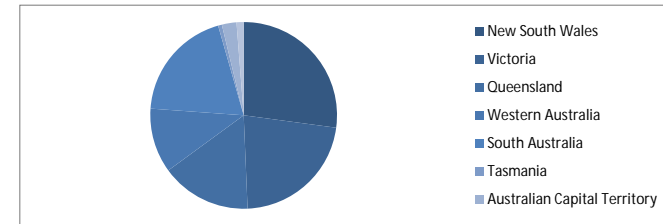
Loan Seasoning Distribution

Seasoning (Months)	Balance	% Balance	Loan Count	% Loan Count
<= 12 Months	0	0.00%	0	0.00%
12 Months > and <= 18 Months	0	0.00%	0	0.00%
18 Months > and <= 24 Months	62,498,432	36.28%	289	35.72%
24 Months > and <= 30 Months	77,179,396	44.81%	347	42.89%
30 Months > and <= 36 Months	18,084,355	10.50%	106	13.10%
36 Months > and <= 42 Months	10,916,843	6.34%	54	6.67%
42 Months > and <= 48 Months	2,961,082	1.72%	11	1.36%
48 Months > and <= 54 Months	0	0.00%	0	0.00%
54 Months > and <= 60 Months	0	0.00%	0	0.00%
60 Months > and <= 66 Months	0	0.00%	0	0.00%
66 Months > and <= 72 Months	0	0.00%	0	0.00%
> 72 Months	609,500	0.35%	2	0.25%
Total	172,249,609	100.00%	809	100.00%



Geographic Distribution

Jurisdiction State	Balance	% Balance	Loan Count (Consol.)	% Loan Count
New South Wales	46,686,886	27.10%	168	24.85%
Victoria	38,261,195	22.21%	147	21.75%
Queensland	26,917,758	15.63%	99	14.64%
Western Australia	19,278,237	11.19%	59	8.73%
South Australia	33,481,000	19.44%	176	26.04%
Tasmania	1,163,085	0.68%	6	0.89%
Australian Capital Territory	4,326,386	2.51%	13	1.92%
Northern Territory	2,135,063	1.24%	8	1.18%
No Data	0	0.00%	0	0.00%
Total	172,249,609	100.00%	676	100.00%



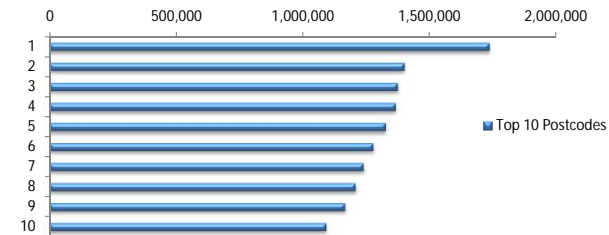
Locality

S&P Category	Balance	% Balance	Loan Count (Consol.)	% Loan Count
Metro	137,299,041	79.71%	534	78.99%
Non Metro	32,622,645	18.94%	136	20.12%
Inner City	2,327,923	1.35%	6	0.89%
Total	172,249,609	100.00%	676	100.00%



Top 10 Postcodes

Postcode	Balance	% Balance	Loan Count (Consol.)	% Loan Count
5108	1,737,273	1.01%	12	1.48%
6062	1,401,894	0.81%	3	0.37%
5085	1,374,685	0.80%	5	0.62%
2602	1,367,212	0.79%	3	0.37%
6026	1,328,013	0.77%	4	0.49%
2444	1,277,858	0.74%	4	0.49%
3216	1,240,109	0.72%	5	0.62%
5114	1,208,079	0.70%	8	0.99%
6155	1,166,891	0.68%	3	0.37%
5109	1,092,956	0.63%	3	0.37%
Total	13,194,968	7.66%	50	6.18%



Documentation

Document Type	Balance	% Balance	Loan Count	% Loan Count
Full Doc	172,249,609	100.00%	809	100.00%
Low Doc	0	0.00%	0	0.00%
No Doc	0	0.00%	0	0.00%
Total	172,249,609	100.00%	809	100.00%



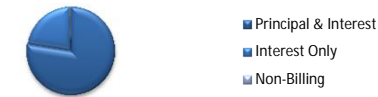
Rate Type

Rate Type	Balance	% Balance	Loan Count	% Loan Count
Variable Rate	172,249,609	100.00%	809	100.00%
Fixed Rate	0	0.00%	0	0.00%
Total	172,249,609	100.00%	809	100.00%



Repayment Type

Repayment Type	Balance	% Balance	Loan Count	% Loan Count
Principal & Interest	133,453,151	77.48%	629	77.75%
Interest Only	37,756,821	21.92%	165	20.40%
Non-Billing	1,039,636	0.60%	15	1.85%
Total	172,249,609	100.00%	809	100.00%



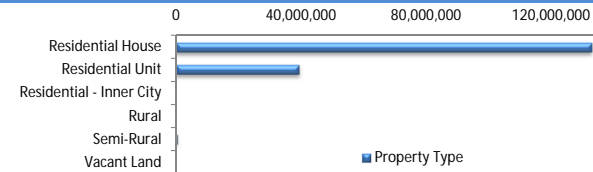
Loan Type

Product Category	Balance	% Balance	Loan Count	% Loan Count
Line of Credit	1,039,636	0.60%	15	1.85%
Term Loan	171,209,972	99.40%	794	98.15%
Total	172,249,609	100.00%	809	100.00%



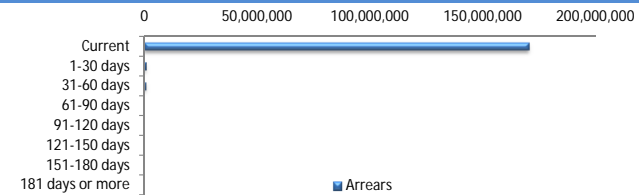
Property Type

Property Type	Balance	% Balance	Loan Count (Consol.)	% Loan Count
Residential House	132,776,751	77.08%	521	77.07%
Residential Unit	39,143,695	22.72%	154	22.78%
Residential - Inner City	0	0.00%	0	0.00%
Rural	0	0.00%	0	0.00%
Semi-Rural	329,163	0.19%	1	0.15%
Vacant Land	0	0.00%	0	0.00%
Total	172,249,609	100.00%	676	100.00%



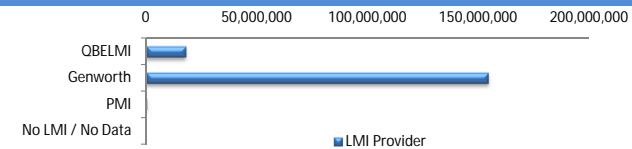
Arrears

Arrears Band	Balance	% Balance	Loan Count	% Loan Count
Current	170,529,152	99.00%	803	99.26%
1-30 days	954,020	0.55%	3	0.37%
31-60 days	766,437	0.44%	3	0.37%
61-90 days	0	0.00%	0	0.00%
91-120 days	0	0.00%	0	0.00%
121-150 days	0	0.00%	0	0.00%
151-180 days	0	0.00%	0	0.00%
181 days or more	0	0.00%	0	0.00%
Total	172,249,609	100.00%	809	100.00%



LMI Provider

LMI Provider	Balance	% Balance	Loan Count	% Loan Count
QBELMI	17,492,805	10.16%	83	12.28%
Genworth	154,329,162	89.60%	592	87.57%
PMI	427,641	0.25%	1	0.15%
No LMI / No Data	0	0.00%	0	0.00%
Total	172,249,609	100.00%	676	100.00%



Property Occupancy

Property Occupancy	Balance	% Balance	Loan Count	% Loan Count
Investment	42,649,459	24.76%	184	22.74%
Owner Occupier	129,600,150	75.24%	625	77.26%
Total	172,249,609	100.00%	809	100.00%



Default Statistics

Default Data	Amount	No. of Loans
Defaulted Loans	0.00	0.00
Loss on Sale	0.00	0.00
Claims on LMI	0.00	0.00
Claims paid by LMI	0.00	0.00
Claims Denied/Reduced	0.00	0.00
Loss covered by Excess Spread	0.00	N/A