

**AFG Series 2013-2
Collateral Report**



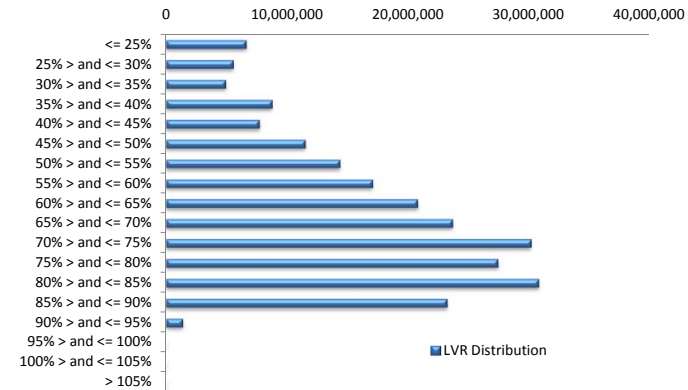
Model Period	10
Collection Period Start	01-Aug-14
Collection Period End	31-Aug-14
No. of Days	31
Interest Period Start	14-Aug-14
Interest Period End	14-Sep-14
No. of Days	32
Determination Date	10-Sep-14
Payment Date	15-Sep-14

Pool Statistics

Closing Balance of Mortgages	233,694,303
No. of Loans (Unconsolidated)	932
No. of Loans (Consolidated)	779
Average Loan Size (Unconsolidated)	250,745
Average Loan Size (Consolidated)	299,993
Largest Loan Size (Unconsolidated)	1,075,882
Largest Loan Size (Consolidated)	1,075,882
Smallest Loan Size (Unconsolidated)	(15,893)
Smallest Loan Size (Consolidated)	(716)
Weighted Average Interest Rate	4.90%
Weighted Average LVR	65.35%
Weighted Average Seasoning	20.60

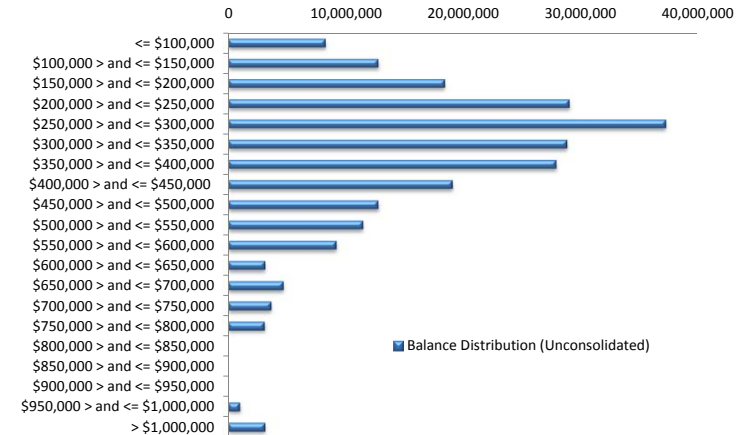
LVR Distribution

Current LTV	Balance	% Balance	Loan Count (Consol.)	% Loan Count
<= 25%	6,603,103	2.83%	72	9.24%
25% > and <= 30%	5,544,234	2.37%	31	3.98%
30% > and <= 35%	4,903,615	2.10%	23	2.95%
35% > and <= 40%	8,749,058	3.74%	46	5.91%
40% > and <= 45%	7,677,549	3.29%	36	4.62%
45% > and <= 50%	11,490,320	4.92%	40	5.13%
50% > and <= 55%	14,349,573	6.14%	47	6.03%
55% > and <= 60%	17,045,701	7.29%	53	6.80%
60% > and <= 65%	20,772,945	8.89%	58	7.45%
65% > and <= 70%	23,664,590	10.13%	64	8.22%
70% > and <= 75%	30,148,548	12.90%	81	10.40%
75% > and <= 80%	27,410,416	11.73%	70	8.99%
80% > and <= 85%	30,780,748	13.17%	84	10.78%
85% > and <= 90%	23,218,966	9.94%	70	8.99%
90% > and <= 95%	1,334,938	0.57%	4	0.51%
95% > and <= 100%	0	0.00%	0	0.00%
100% > and <= 105%	0	0.00%	0	0.00%
> 105%	0	0.00%	0	0.00%
Total	233,694,303	100.00%	779	100.00%



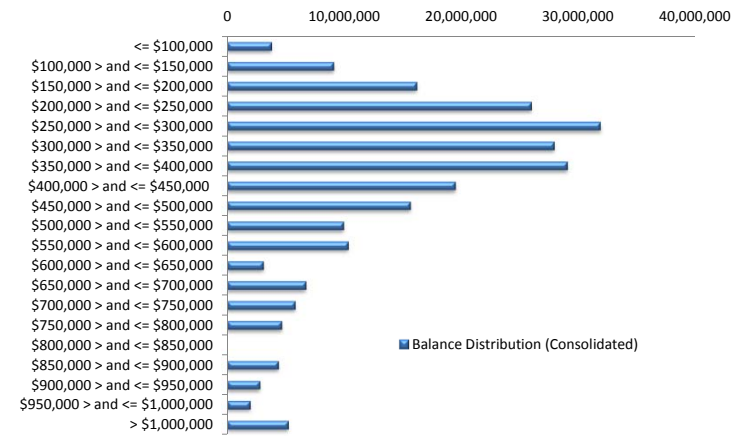
Balance Distribution (Unconsolidated)

Current Balance	Balance	% Balance	Loan Count	% Loan Count
<= \$100,000	8,265,227	3.54%	160	17.17%
\$100,000 > and <= \$150,000	12,757,244	5.46%	102	10.94%
\$150,000 > and <= \$200,000	18,435,495	7.89%	106	11.37%
\$200,000 > and <= \$250,000	29,046,780	12.43%	130	13.95%
\$250,000 > and <= \$300,000	37,252,848	15.94%	136	14.59%
\$300,000 > and <= \$350,000	28,830,235	12.34%	89	9.55%
\$350,000 > and <= \$400,000	27,919,686	11.95%	74	7.94%
\$400,000 > and <= \$450,000	19,080,446	8.16%	45	4.83%
\$450,000 > and <= \$500,000	12,754,140	5.46%	27	2.90%
\$500,000 > and <= \$550,000	11,465,479	4.91%	22	2.36%
\$550,000 > and <= \$600,000	9,204,195	3.94%	16	1.72%
\$600,000 > and <= \$650,000	3,123,250	1.34%	5	0.54%
\$650,000 > and <= \$700,000	4,706,384	2.01%	7	0.75%
\$700,000 > and <= \$750,000	3,659,093	1.57%	5	0.54%
\$750,000 > and <= \$800,000	3,087,818	1.32%	4	0.43%
\$800,000 > and <= \$850,000	0	0.00%	0	0.00%
\$850,000 > and <= \$900,000	0	0.00%	0	0.00%
\$900,000 > and <= \$950,000	0	0.00%	0	0.00%
\$950,000 > and <= \$1,000,000	978,517	0.42%	1	0.11%
> \$1,000,000	3,127,467	1.34%	3	0.32%
Total	233,694,303	100.00%	932	100.00%



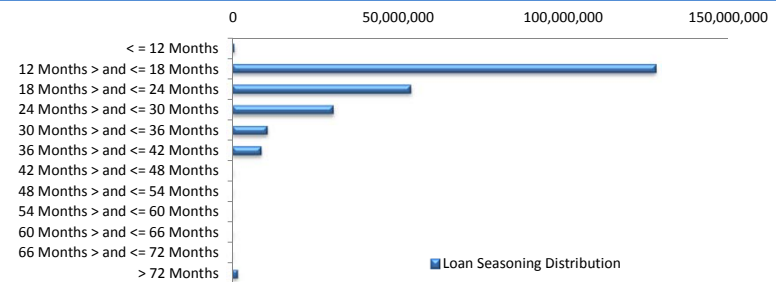
Balance Distribution (Consolidated)

Current Balance	Balance	% Balance	Loan Count (Consol.)	% Loan Count
<= \$100,000	3,774,877	1.62%	61	7.83%
\$100,000 > and <= \$150,000	9,068,488	3.88%	71	9.11%
\$150,000 > and <= \$200,000	16,185,458	6.93%	93	11.94%
\$200,000 > and <= \$250,000	25,951,285	11.10%	115	14.76%
\$250,000 > and <= \$300,000	31,866,412	13.64%	116	14.89%
\$300,000 > and <= \$350,000	27,901,425	11.94%	86	11.04%
\$350,000 > and <= \$400,000	29,040,686	12.43%	77	9.88%
\$400,000 > and <= \$450,000	19,470,123	8.33%	46	5.91%
\$450,000 > and <= \$500,000	15,628,983	6.69%	33	4.24%
\$500,000 > and <= \$550,000	9,930,934	4.25%	19	2.44%
\$550,000 > and <= \$600,000	10,342,374	4.43%	18	2.31%
\$600,000 > and <= \$650,000	3,070,091	1.31%	5	0.64%
\$650,000 > and <= \$700,000	6,726,419	2.88%	10	1.28%
\$700,000 > and <= \$750,000	5,797,444	2.48%	8	1.03%
\$750,000 > and <= \$800,000	4,638,671	1.98%	6	0.77%
\$800,000 > and <= \$850,000	0	0.00%	0	0.00%
\$850,000 > and <= \$900,000	4,355,910	1.86%	5	0.64%
\$900,000 > and <= \$950,000	2,776,814	1.19%	3	0.39%
\$950,000 > and <= \$1,000,000	1,947,079	0.83%	2	0.26%
> \$1,000,000	5,220,828	2.23%	5	0.64%
Total	233,694,303	100.00%	779	100.00%



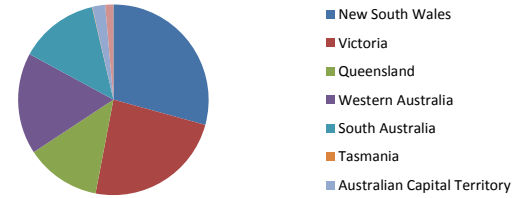
Loan Seasoning Distribution

Seasoning (Months)	Balance	% Balance	Loan Count	% Loan Count
<= 12 Months	616,697	0.26%	4	0.43%
12 Months > and <= 18 Months	127,815,143	54.69%	510	54.72%
18 Months > and <= 24 Months	53,864,191	23.05%	204	21.89%
24 Months > and <= 30 Months	30,449,003	13.03%	120	12.88%
30 Months > and <= 36 Months	10,551,474	4.52%	52	5.58%
36 Months > and <= 42 Months	8,736,692	3.74%	35	3.76%
42 Months > and <= 48 Months	0	0.00%	0	0.00%
48 Months > and <= 54 Months	0	0.00%	0	0.00%
54 Months > and <= 60 Months	0	0.00%	0	0.00%
60 Months > and <= 66 Months	0	0.00%	0	0.00%
66 Months > and <= 72 Months	0	0.00%	0	0.00%
> 72 Months	1,661,103	0.71%	7	0.75%
Total	233,694,303	100.00%	932	100.00%



Geographic Distribution

Jurisdiction State	Balance	% Balance	Loan Count (Consol.)	% Loan Count
New South Wales	68,330,034	29.24%	214	27.47%
Victoria	55,561,425	23.78%	201	25.80%
Queensland	29,766,561	12.74%	100	12.84%
Western Australia	40,152,141	17.18%	108	13.86%
South Australia	31,431,827	13.45%	133	17.07%
Tasmania	216,107	0.09%	2	0.26%
Australian Capital Territory	4,972,150	2.13%	15	1.93%
Northern Territory	3,264,059	1.40%	6	0.77%
No Data	0	0.00%	0	0.00%
Total	233,694,303	100.00%	779	100.00%



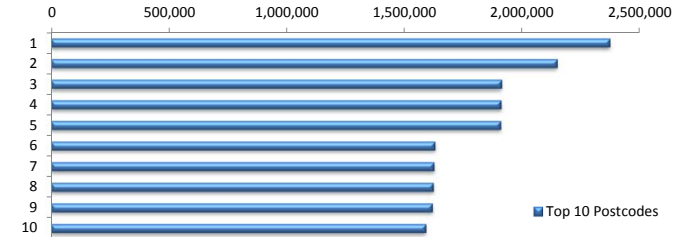
Locality

S&P Category	Balance	% Balance	Loan Count (Consol.)	% Loan Count
Metro	189,495,589	81.09%	615	78.95%
Non Metro	39,550,957	16.92%	153	19.64%
Inner City	4,647,757	1.99%	11	1.41%
Total	233,694,303	100.00%	779	100.00%



Top 10 Postcodes

Postcode	Balance	% Balance	Loan Count (Consol.)	% Loan Count
6065	2,369,538	1.01%	4	0.43%
6030	2,145,745	0.92%	5	0.54%
6164	1,910,013	0.82%	5	0.54%
2913	1,908,520	0.82%	6	0.64%
3121	1,906,358	0.82%	4	0.43%
3216	1,627,643	0.70%	5	0.54%
5114	1,623,005	0.69%	6	0.64%
6155	1,620,836	0.69%	4	0.43%
2170	1,616,743	0.69%	5	0.54%
2515	1,588,688	0.68%	6	0.64%
Total	18,317,088	7.84%	50	5.36%



Documentation

Document Type	Balance	% Balance	Loan Count	% Loan Count
Full Doc	233,694,303	100.00%	932	100.00%
Low Doc	0	0.00%	0	0.00%
No Doc	0	0.00%	0	0.00%
Total	233,694,303	100.00%	932	100.00%



Rate Type

Rate Type	Balance	% Balance	Loan Count	% Loan Count
Variable Rate	233,694,303	100.00%	932	100.00%
Fixed Rate	0	0.00%	0	0.00%
Total	233,694,303	100.00%	932	100.00%



Repayment Type

Repayment Type	Balance	% Balance	Loan Count	% Loan Count
Principal & Interest	189,035,984	80.89%	745	79.94%
Interest Only	43,640,662	18.67%	170	18.24%
Non-Billing	1,017,656	0.44%	17	1.82%
Total	233,694,303	100.00%	932	100.00%



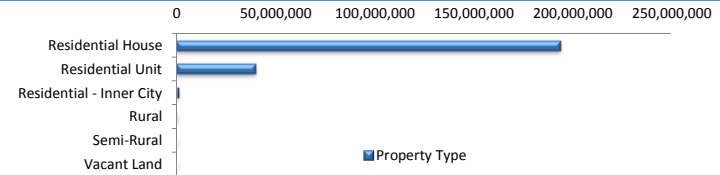
Loan Type

Product Category	Balance	% Balance	Loan Count	% Loan Count
Line of Credit	1,017,656	0.44%	17	1.82%
Term Loan	232,676,647	99.56%	915	98.18%
Total	233,694,303	100.00%	932	100.00%



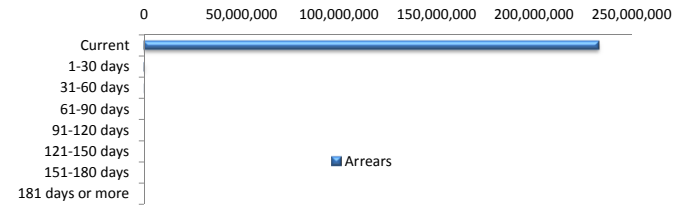
Property Type

Property Type	Balance	% Balance	Loan Count (Consol.)	% Loan Count
Residential House	193,328,931	82.73%	630	80.87%
Residential Unit	39,490,141	16.90%	146	18.74%
Residential - Inner City	719,031	0.31%	2	0.26%
Rural	156,199	0.07%	1	0.13%
Semi-Rural	0	0.00%	0	0.00%
Vacant Land	0	0.00%	0	0.00%
Total	233,694,303	100.00%	779	100.00%



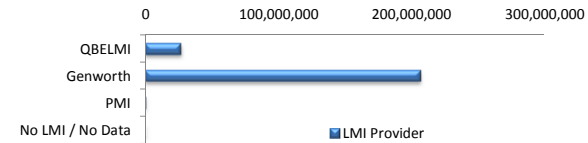
Arrears

Arrears Band	Balance	% Balance	Loan Count	% Loan Count
Current	233,117,868	99.75%	930	99.79%
1-30 days	447,109	0.19%	1	0.11%
31-60 days	129,326	0.06%	1	0.11%
61-90 days	0	0.00%	0	0.00%
91-120 days	0	0.00%	0	0.00%
121-150 days	0	0.00%	0	0.00%
151-180 days	0	0.00%	0	0.00%
181 days or more	0	0.00%	0	0.00%
Total	233,694,303	100.00%	932	100.00%



LMI Provider

LMI Provider	Balance	% Balance	Loan Count (Consol.)	% Loan Count
QBELMI	26,512,178	11.34%	88	11.30%
Genworth	206,556,013	88.39%	689	88.45%
PMI	626,113	0.27%	2	0.26%
No LMI / No Data	0	0.00%	0	0.00%
Total	233,694,303	100.00%	779	100.00%



Property Occupancy

Property Occupancy	Balance	% Balance	Loan Count	% Loan Count
Investment	51,870,595	22.20%	200	21.46%
Owner Occupier	181,823,708	77.80%	732	78.54%
Total	233,694,303	100.00%	932	100.00%



Default Statistics

Default Data	Amount	No. of Loans
Defaulted Loans	0.00	0.00
Loss on Sale	0.00	0.00
Claims on LMI	0.00	0.00
Claims paid by LMI	0.00	0.00
Claims Denied/Reduced	0.00	0.00
Loss covered by Excess Spread	0.00	N/A