

**AFG Series 2013-2**  
**Collateral Report**



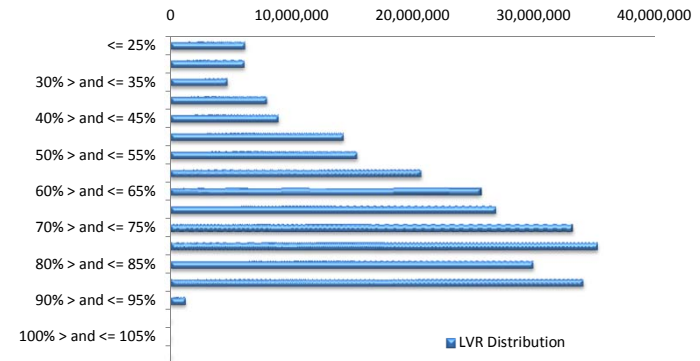
Model Period	5
Collection Period Start	01-Mar-14
Collection Period End	31-Mar-14
No. of Days	31
Interest Period Start	14-Mar-14
Interest Period End	13-Apr-14
No. of Days	31
Determination Date	09-Apr-14
Payment Date	14-Apr-14

**Pool Statistics**

Closing Balance of Mortgages	270,703,976
No. of Loans (Unconsolidated)	1,045
Average Loan Size (Unconsolidated)	259,047
Largest Loan Size (Unconsolidated)	1,083,206
Smallest Loan Size (Unconsolidated)	(1,741)
Weighted Average Interest Rate	4.91%
Weighted Average LVR	66.30%
Weighted Average Seasoning	16.28

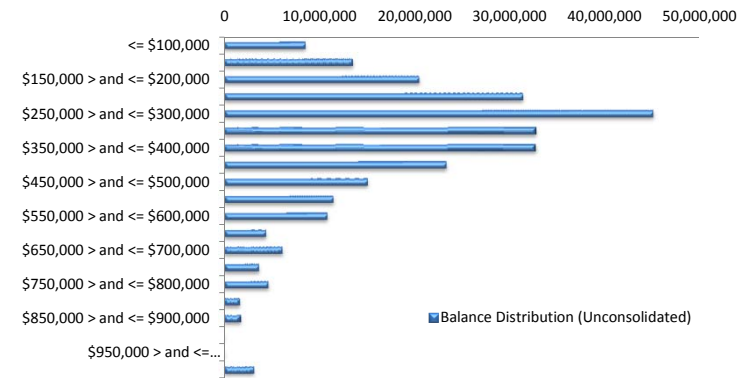
**LVR Distribution**

Current LTV	Balance	% Balance	Loan Count	% Loan Count
<= 25%	6,176,875	2.28%	70	6.70%
25% > and <= 30%	6,138,261	2.27%	37	3.54%
30% > and <= 35%	4,728,486	1.75%	29	2.78%
35% > and <= 40%	7,971,720	2.94%	43	4.11%
40% > and <= 45%	8,937,620	3.30%	51	4.88%
45% > and <= 50%	14,300,962	5.28%	58	5.55%
50% > and <= 55%	15,415,105	5.69%	57	5.45%
55% > and <= 60%	20,699,428	7.65%	85	8.13%
60% > and <= 65%	25,674,761	9.48%	93	8.90%
65% > and <= 70%	26,869,476	9.93%	93	8.90%
70% > and <= 75%	33,211,428	12.27%	103	9.86%
75% > and <= 80%	35,272,199	13.03%	112	10.72%
80% > and <= 85%	29,947,819	11.06%	94	9.00%
85% > and <= 90%	34,081,836	12.59%	116	11.10%
90% > and <= 95%	1,277,999	0.47%	4	0.38%
95% > and <= 100%	0	0.00%	0	0.00%
100% > and <= 105%	0	0.00%	0	0.00%
> 105%	0	0.00%	0	0.00%
<b>Total</b>	<b>270,703,976</b>	<b>100.00%</b>	<b>1,045</b>	<b>100.00%</b>



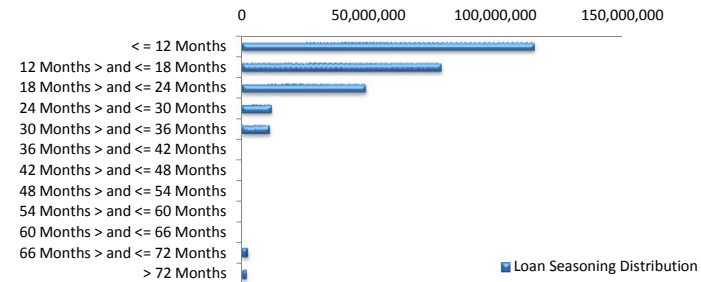
### Balance Distribution (Unconsolidated)

Current Balance	Balance	% Balance	Loan Count	% Loan Count
<= \$100,000	8,557,635	3.16%	165	15.79%
\$100,000 > and <= \$150,000	13,543,347	5.00%	109	10.43%
\$150,000 > and <= \$200,000	20,468,684	7.56%	117	11.20%
\$200,000 > and <= \$250,000	31,406,477	11.60%	140	13.40%
\$250,000 > and <= \$300,000	45,061,555	16.65%	164	15.69%
\$300,000 > and <= \$350,000	32,793,961	12.11%	101	9.67%
\$350,000 > and <= \$400,000	32,733,869	12.09%	87	8.33%
\$400,000 > and <= \$450,000	23,347,031	8.62%	55	5.26%
\$450,000 > and <= \$500,000	15,081,253	5.57%	32	3.06%
\$500,000 > and <= \$550,000	11,470,007	4.24%	22	2.11%
\$550,000 > and <= \$600,000	10,846,339	4.01%	19	1.82%
\$600,000 > and <= \$650,000	4,407,663	1.63%	7	0.67%
\$650,000 > and <= \$700,000	6,112,939	2.26%	9	0.86%
\$700,000 > and <= \$750,000	3,653,583	1.35%	5	0.48%
\$750,000 > and <= \$800,000	4,647,761	1.72%	6	0.57%
\$800,000 > and <= \$850,000	1,667,540	0.62%	2	0.19%
\$850,000 > and <= \$900,000	1,760,428	0.65%	2	0.19%
\$900,000 > and <= \$950,000	0	0.00%	0	0.00%
\$950,000 > and <= \$1,000,000	0	0.00%	0	0.00%
> \$1,000,000	3,143,904	1.16%	3	0.29%
<b>Total</b>	<b>270,703,976</b>	<b>100.00%</b>	<b>1,045</b>	<b>100.00%</b>



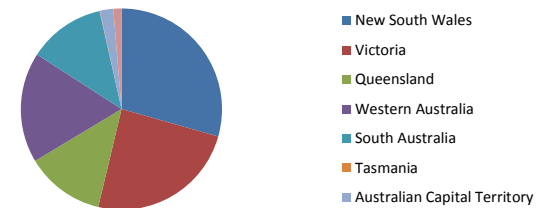
### Loan Seasoning Distribution

Seasoning (Months)	Balance	% Balance	Loan Count	% Loan Count
<= 12 Months	115,374,610	42.62%	458	43.83%
12 Months > and <= 18 Months	78,756,624	29.09%	285	27.27%
18 Months > and <= 24 Months	48,963,602	18.09%	184	17.61%
24 Months > and <= 30 Months	11,942,159	4.41%	56	5.36%
30 Months > and <= 36 Months	11,259,306	4.16%	47	4.50%
36 Months > and <= 42 Months	0	0.00%	0	0.00%
42 Months > and <= 48 Months	0	0.00%	0	0.00%
48 Months > and <= 54 Months	0	0.00%	0	0.00%
54 Months > and <= 60 Months	0	0.00%	0	0.00%
60 Months > and <= 66 Months	0	0.00%	0	0.00%
66 Months > and <= 72 Months	2,418,657	0.89%	8	0.77%
> 72 Months	1,989,017	0.73%	7	0.67%
<b>Total</b>	<b>270,703,976</b>	<b>100.00%</b>	<b>1,045</b>	<b>100.00%</b>



### Geographic Distribution

Jurisdiction State	Balance	% Balance	Loan Count	% Loan Count
New South Wales	79,553,292	29.39%	285	27.27%
Victoria	65,798,449	24.31%	274	26.22%
Queensland	34,349,988	12.69%	125	11.96%
Western Australia	48,075,567	17.76%	159	15.22%
South Australia	33,425,115	12.35%	172	16.46%
Tasmania	211,892	0.08%	2	0.19%
Australian Capital Territory	5,820,762	2.15%	17	1.63%
Northern Territory	3,468,910	1.28%	11	1.05%
No Data	0	0.00%	0	0.00%
<b>Total</b>	<b>270,703,976</b>	<b>100.00%</b>	<b>1,045</b>	<b>100.00%</b>



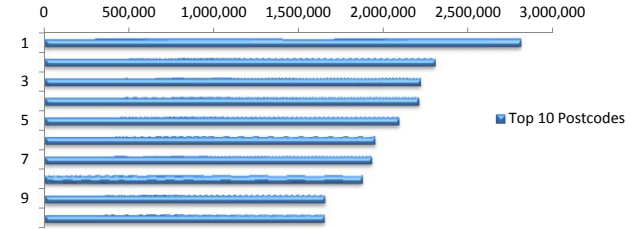
### Locality

S&P Category	Balance	% Balance	Loan Count	% Loan Count
Metro	219,651,001	81.14%	831	79.52%
Non Metro	45,790,850	16.92%	201	19.23%
Inner City	5,262,125	1.94%	13	1.24%
<b>Total</b>	<b>270,703,976</b>	<b>100.00%</b>	<b>1,045</b>	<b>100.00%</b>



### Top 10 Postcodes

Postcode	Balance	% Balance	Loan Count	% Loan Count
6065	2,805,614	1.04%	7	0.67%
2560	2,300,859	0.85%	8	0.77%
3121	2,215,593	0.82%	5	0.48%
6030	2,205,382	0.81%	6	0.57%
3216	2,088,268	0.77%	7	0.67%
2913	1,947,001	0.72%	7	0.67%
2170	1,928,172	0.71%	7	0.67%
6164	1,872,845	0.69%	6	0.57%
5114	1,652,053	0.61%	8	0.77%
2260	1,647,580	0.61%	6	0.57%
<b>Total</b>	<b>20,663,367</b>	<b>7.63%</b>	<b>67</b>	<b>6.41%</b>



### Documentation

Document Type	Balance	% Balance	Loan Count	% Loan Count
Full Doc	270,703,976	100.00%	1,045	100.00%
Low Doc	0	0.00%	0	0.00%
No Doc	0	0.00%	0	0.00%
<b>Total</b>	<b>270,703,976</b>	<b>100.00%</b>	<b>1,045</b>	<b>100.00%</b>



### Rate Type

Rate Type	Balance	% Balance	Loan Count	% Loan Count
Variable Rate	270,703,976	100.00%	1,045	100.00%
Fixed Rate	0	0.00%	0	0.00%
<b>Total</b>	<b>270,703,976</b>	<b>100.00%</b>	<b>1,045</b>	<b>100.00%</b>



### Repayment Type

Repayment Type	Balance	% Balance	Loan Count	% Loan Count
Principal & Interest	216,336,516	79.92%	823	78.76%
Interest Only	53,232,782	19.66%	202	19.33%
Non-Billing	1,134,678	0.42%	20	1.91%
<b>Total</b>	<b>270,703,976</b>	<b>100.00%</b>	<b>1,045</b>	<b>100.00%</b>



### Loan Type

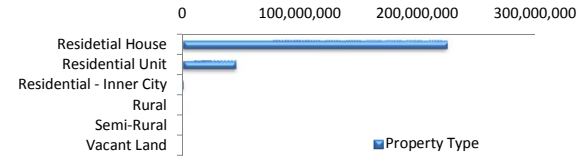
Product Category	Balance	% Balance	Loan Count	% Loan Count
Line of Credit	1,134,678	0.42%	20	1.91%
Term Loan	269,569,297	99.58%	1,025	98.09%
<b>Total</b>	<b>270,703,976</b>	<b>100.00%</b>	<b>1,045</b>	<b>100.00%</b>



■ Line of Credit  
■ Term Loan

### Property Type

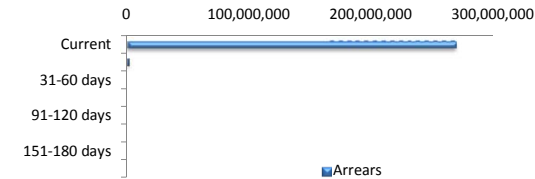
Property Type	Balance	% Balance	Loan Count	% Loan Count
Residential House	224,276,341	82.85%	852	81.53%
Residential Unit	45,313,038	16.74%	189	18.09%
Residential - Inner City	799,787	0.30%	2	0.19%
Rural	314,809	0.12%	2	0.19%
Semi-Rural	0	0.00%	0	0.00%
Vacant Land	0	0.00%	0	0.00%
<b>Total</b>	<b>270,703,976</b>	<b>100.00%</b>	<b>1,045</b>	<b>100.00%</b>



■ Property Type

### Arrears

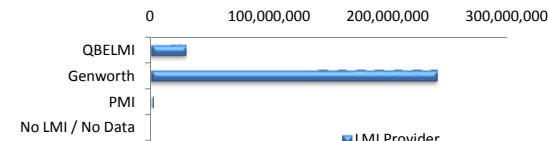
Arrears Band	Balance	% Balance	Loan Count	% Loan Count
Current	268,916,590	99.34%	1,040	99.52%
1-30 days	1,787,385	0.66%	5	0.48%
31-60 days	0	0.00%	0	0.00%
61-90 days	0	0.00%	0	0.00%
91-120 days	0	0.00%	0	0.00%
121-150 days	0	0.00%	0	0.00%
151-180 days	0	0.00%	0	0.00%
181 days or more	0	0.00%	0	0.00%
<b>Total</b>	<b>270,703,976</b>	<b>100.00%</b>	<b>1,045</b>	<b>100.00%</b>



■ Arrears

### LMI Provider

LMI Provider	Balance	% Balance	Loan Count	% Loan Count
QBELMI	29,070,768	10.74%	115	11.00%
Genworth	240,286,175	88.76%	926	88.61%
PMI	1,347,032	0.50%	4	0.38%
No LMI / No Data	0	0.00%	0	0.00%
<b>Total</b>	<b>270,703,976</b>	<b>100.00%</b>	<b>1,045</b>	<b>100.00%</b>



■ LMI Provider

### Property Occupancy

Property Occupancy	Balance	% Balance	Loan Count	% Loan Count
Investment	61,588,034	22.75%	222	21.24%
Owner Occupier	209,115,941	77.25%	823	78.76%
<b>Total</b>	<b>270,703,976</b>	<b>100.00%</b>	<b>1,045</b>	<b>100.00%</b>



■ Investment  
■ Owner Occupier

### Default Statistics

Default Data	Amount	No. of Loans
Defaulted Loans	0.00	0.00
Loss on Sale	0.00	0.00
Claims on LMI	0.00	0.00
Claims paid by LMI	0.00	0.00
Claims Denied/Reduced	0.00	0.00
Loss covered by Excess Spread	0.00	N/A