

AFG Series 2013-2
Collateral Report



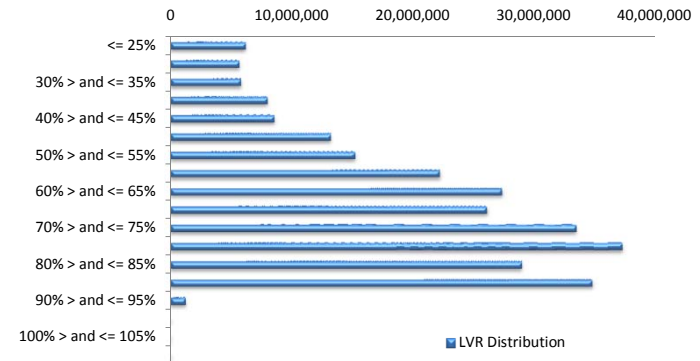
Model Period	4
Collection Period Start	01-Feb-14
Collection Period End	28-Feb-14
No. of Days	28
Interest Period Start	14-Feb-14
Interest Period End	13-Mar-14
No. of Days	28
Determination Date	11-Mar-14
Payment Date	14-Mar-14

Pool Statistics

Closing Balance of Mortgages	274,399,908
Number of Loans	1,050
Average Loan Size	261,333
Largest Loan Size	1,084,598
Smallest Loan Size	(2,871)
Weighted Average Interest Rate	4.91%
Weighted Average LVR	66.34%
Weighted Average Seasoning	15.24

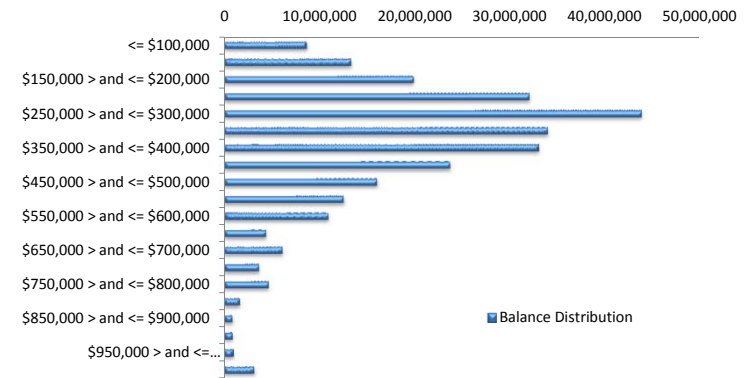
LVR Distribution

Current LTV	Balance	% Balance	Loan Count	% Loan Count
<= 25%	6,228,024	2.27%	69	6.57%
25% > and <= 30%	5,702,564	2.08%	34	3.24%
30% > and <= 35%	5,825,800	2.12%	33	3.14%
35% > and <= 40%	8,032,077	2.93%	39	3.71%
40% > and <= 45%	8,592,853	3.13%	51	4.86%
45% > and <= 50%	13,244,005	4.83%	53	5.05%
50% > and <= 55%	15,260,687	5.56%	59	5.62%
55% > and <= 60%	22,211,383	8.09%	86	8.19%
60% > and <= 65%	27,357,878	9.97%	101	9.62%
65% > and <= 70%	26,116,669	9.52%	91	8.67%
70% > and <= 75%	33,485,697	12.20%	103	9.81%
75% > and <= 80%	37,276,141	13.58%	117	11.14%
80% > and <= 85%	28,985,726	10.56%	94	8.95%
85% > and <= 90%	34,802,569	12.68%	116	11.05%
90% > and <= 95%	1,277,835	0.47%	4	0.38%
95% > and <= 100%	0	0.00%	0	0.00%
100% > and <= 105%	0	0.00%	0	0.00%
> 105%	0	0.00%	0	0.00%
Total	274,399,908	100.00%	1,050	100.00%



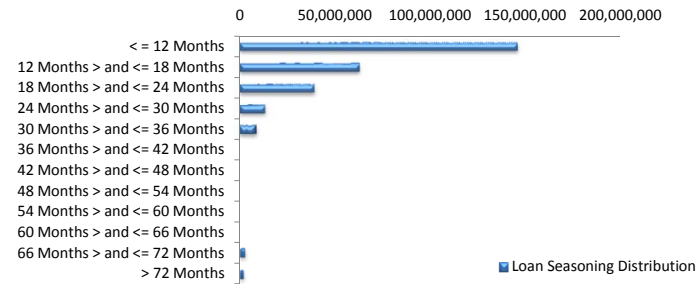
Balance Distribution

Current Balance	Balance	% Balance	Loan Count	% Loan Count
<= \$100,000	8,689,725	3.17%	165	15.71%
\$100,000 > and <= \$150,000	13,338,407	4.86%	107	10.19%
\$150,000 > and <= \$200,000	19,900,415	7.25%	114	10.86%
\$200,000 > and <= \$250,000	32,049,989	11.68%	143	13.62%
\$250,000 > and <= \$300,000	43,815,332	15.97%	160	15.24%
\$300,000 > and <= \$350,000	33,964,892	12.38%	105	10.00%
\$350,000 > and <= \$400,000	33,018,468	12.03%	88	8.38%
\$400,000 > and <= \$450,000	23,708,095	8.64%	56	5.33%
\$450,000 > and <= \$500,000	16,038,473	5.84%	34	3.24%
\$500,000 > and <= \$550,000	12,539,136	4.57%	24	2.29%
\$550,000 > and <= \$600,000	10,924,255	3.98%	19	1.81%
\$600,000 > and <= \$650,000	4,411,406	1.61%	7	0.67%
\$650,000 > and <= \$700,000	6,112,678	2.23%	9	0.86%
\$700,000 > and <= \$750,000	3,660,237	1.33%	5	0.48%
\$750,000 > and <= \$800,000	4,651,149	1.70%	6	0.57%
\$800,000 > and <= \$850,000	1,669,902	0.61%	2	0.19%
\$850,000 > and <= \$900,000	864,157	0.31%	1	0.10%
\$900,000 > and <= \$950,000	902,250	0.33%	1	0.10%
\$950,000 > and <= \$1,000,000	994,226	0.36%	1	0.10%
> \$1,000,000	3,146,716	1.15%	3	0.29%
Total	274,399,908	100.00%	1,050	100.00%



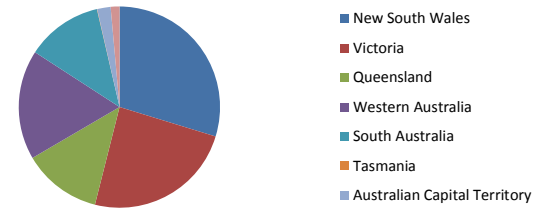
Loan Seasoning Distribution

Seasoning (Months)	Balance	% Balance	Loan Count	% Loan Count
<= 12 Months	145,510,318	53.03%	567	54.00%
12 Months > and <= 18 Months	62,893,413	22.92%	229	21.81%
18 Months > and <= 24 Months	39,249,408	14.30%	143	13.62%
24 Months > and <= 30 Months	13,422,370	4.89%	60	5.71%
30 Months > and <= 36 Months	8,912,265	3.25%	36	3.43%
36 Months > and <= 42 Months	0	0.00%	0	0.00%
42 Months > and <= 48 Months	0	0.00%	0	0.00%
48 Months > and <= 54 Months	0	0.00%	0	0.00%
54 Months > and <= 60 Months	0	0.00%	0	0.00%
60 Months > and <= 66 Months	0	0.00%	0	0.00%
66 Months > and <= 72 Months	2,576,177	0.94%	9	0.86%
> 72 Months	1,835,956	0.67%	6	0.57%
Total	274,399,908	100.00%	1,050	100.00%



Geographic Distribution

Jurisdiction State	Balance	% Balance	Loan Count	% Loan Count
New South Wales	81,487,523	29.70%	285	27.14%
Victoria	66,471,077	24.22%	276	26.29%
Queensland	34,792,554	12.68%	126	12.00%
Western Australia	48,214,458	17.57%	159	15.14%
South Australia	33,470,620	12.20%	172	16.38%
Tasmania	219,632	0.08%	2	0.19%
Australian Capital Territory	5,835,457	2.13%	17	1.62%
Northern Territory	3,908,586	1.42%	13	1.24%
No Data	0	0.00%	0	0.00%
Total	274,399,908	100.00%	1,050	100.00%



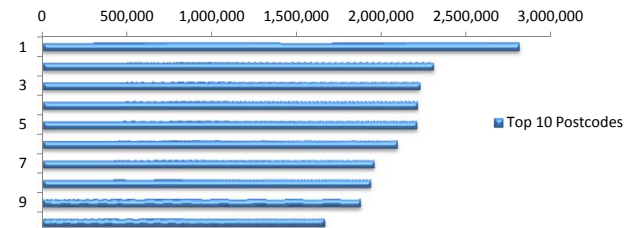
Locality

S&P Category	Balance	% Balance	Loan Count	% Loan Count
Metro	222,284,391	81.01%	835	79.52%
Non Metro	46,829,616	17.07%	202	19.24%
Inner City	5,285,901	1.93%	13	1.24%
Total	274,399,908	100.00%	1,050	100.00%



Top 10 Postcodes

Postcode	Balance	% Balance	Loan Count	% Loan Count
6065	2,808,615	1.02%	7	0.67%
2560	2,303,645	0.84%	8	0.76%
3121	2,223,825	0.81%	5	0.48%
2515	2,209,551	0.81%	6	0.57%
6030	2,205,398	0.80%	6	0.57%
3216	2,090,733	0.76%	7	0.67%
2913	1,954,369	0.71%	7	0.67%
2170	1,933,517	0.70%	7	0.67%
6164	1,873,300	0.68%	6	0.57%
5114	1,662,528	0.61%	8	0.76%
Total	21,265,480	7.75%	67	6.38%



Documentation

Document Type	Balance	% Balance	Loan Count	% Loan Count
Full Doc	274,399,908	100.00%	1,050	100.00%
Low Doc	0	0.00%	0	0.00%
No Doc	0	0.00%	0	0.00%
Total	274,399,908	100.00%	1,050	100.00%



Rate Type

Rate Type	Balance	% Balance	Loan Count	% Loan Count
Variable Rate	274,399,908	100.00%	1,050	100.00%
Fixed Rate	0	0.00%	0	0.00%
Total	274,399,908	100.00%	1,050	100.00%



Repayment Type

Repayment Type	Balance	% Balance	Loan Count	% Loan Count
Principal & Interest	219,367,880	79.94%	828	78.86%
Interest Only	53,897,750	19.64%	202	19.24%
Non-Billing	1,134,278	0.41%	20	1.90%
Total	274,399,908	100.00%	1,050	100.00%



Loan Type

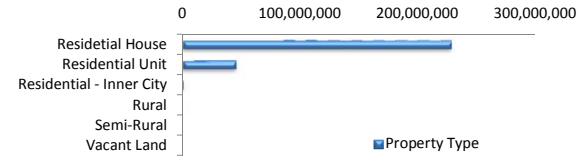
Product Category	Balance	% Balance	Loan Count	% Loan Count
Line of Credit	1,134,278	0.41%	20	1.90%
Term Loan	273,265,630	99.59%	1,030	98.10%
Total	274,399,908	100.00%	1,050	100.00%



■ Line of Credit
■ Term Loan

Property Type

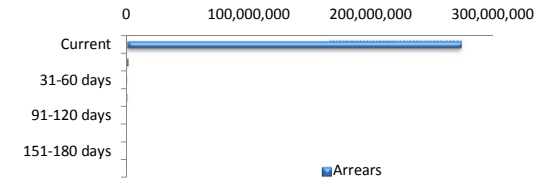
Property Type	Balance	% Balance	Loan Count	% Loan Count
Residential House	227,853,464	83.04%	857	81.62%
Residential Unit	45,424,861	16.55%	189	18.00%
Residential - Inner City	806,097	0.29%	2	0.19%
Rural	315,485	0.11%	2	0.19%
Semi-Rural	0	0.00%	0	0.00%
Vacant Land	0	0.00%	0	0.00%
Total	274,399,908	100.00%	1,050	100.00%



■ Property Type

Arrears

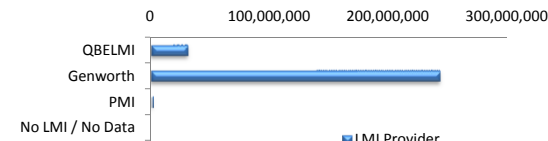
Arrears Band	Balance	% Balance	Loan Count	% Loan Count
Current	273,245,294	99.58%	1,047	99.71%
1-30 days	690,859	0.25%	1	0.10%
31-60 days	130,130	0.05%	1	0.10%
61-90 days	333,624	0.12%	1	0.10%
91-120 days	0	0.00%	0	0.00%
121-150 days	0	0.00%	0	0.00%
151-180 days	0	0.00%	0	0.00%
181 days or more	0	0.00%	0	0.00%
Total	274,399,908	100.00%	1,050	100.00%



■ Arrears

LMI Provider

LMI Provider	Balance	% Balance	Loan Count	% Loan Count
QBELMI	30,229,180	11.02%	115	10.95%
Genworth	242,822,150	88.49%	931	88.67%
PMI	1,348,578	0.49%	4	0.38%
No LMI / No Data	0	0.00%	0	0.00%
Total	274,399,908	100.00%	1,050	100.00%



■ LMI Provider

Property Occupancy

Property Occupancy	Balance	% Balance	Loan Count	% Loan Count
Investment	62,990,348	22.96%	221	21.05%
Owner Occupier	211,409,559	77.04%	829	78.95%
Total	274,399,908	100.00%	1,050	100.00%



■ Investment
■ Owner Occupier

Default Statistics

Default Data	Amount	No. of Loans
Defaulted Loans	0.00	0.00
Loss on Sale	0.00	0.00
Claims on LMI	0.00	0.00
Claims paid by LMI	0.00	0.00
Claims Denied/Reduced	0.00	0.00
Loss covered by Excess Spread	0.00	N/A