

AFG 2013-1 Trust
Collateral Report



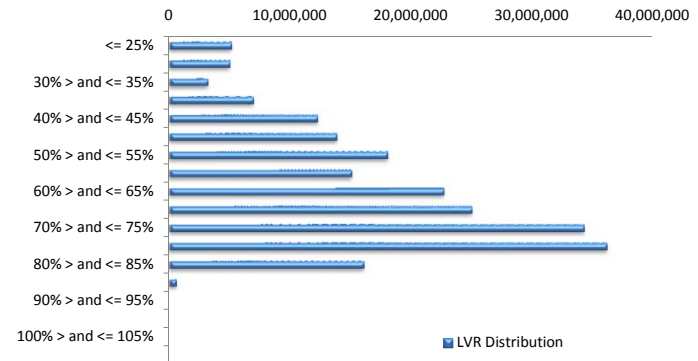
Model Period	12
Collection Period Start	01-Feb-14
Collection Period End	28-Feb-14
No. of Days	28
Interest Period Start	10-Feb-14
Interest Period End	10-Mar-14
No. of Days	29
Determination Date	05-Mar-14
Payment Date	11-Mar-14

Pool Statistics

Closing Balance of Mortgages	214,271,968
Number of Loans	974
Average Loan Size	219,992
Largest Loan Size	787,818
Smallest Loan Size	0
Weighted Average Interest Rate	4.94%
Weighted Average LVR	62.21%
Weighted Average Seasoning	19.21

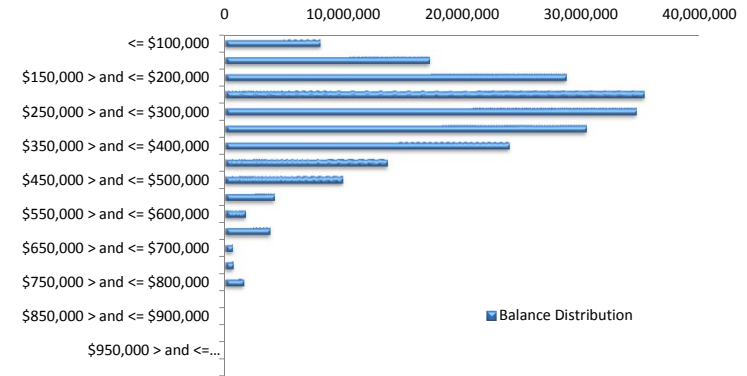
LVR Distribution

Current LTV	Balance	% Balance	Loan Count	% Loan Count
<= 25%	5,181,434	2.42%	55	5.65%
25% > and <= 30%	5,050,320	2.36%	36	3.70%
30% > and <= 35%	3,209,626	1.50%	21	2.16%
35% > and <= 40%	6,982,032	3.26%	45	4.62%
40% > and <= 45%	12,262,741	5.72%	59	6.06%
45% > and <= 50%	13,862,741	6.47%	71	7.29%
50% > and <= 55%	18,008,218	8.40%	75	7.70%
55% > and <= 60%	15,056,076	7.03%	75	7.70%
60% > and <= 65%	22,675,149	10.58%	93	9.55%
65% > and <= 70%	25,009,456	11.67%	109	11.19%
70% > and <= 75%	34,241,181	15.98%	147	15.09%
75% > and <= 80%	36,084,567	16.84%	131	13.45%
80% > and <= 85%	16,060,680	7.50%	55	5.65%
85% > and <= 90%	587,745	0.27%	2	0.21%
90% > and <= 95%	0	0.00%	0	0.00%
95% > and <= 100%	0	0.00%	0	0.00%
100% > and <= 105%	0	0.00%	0	0.00%
> 105%	0	0.00%	0	0.00%
Total	214,271,968	100.00%	974	100.00%



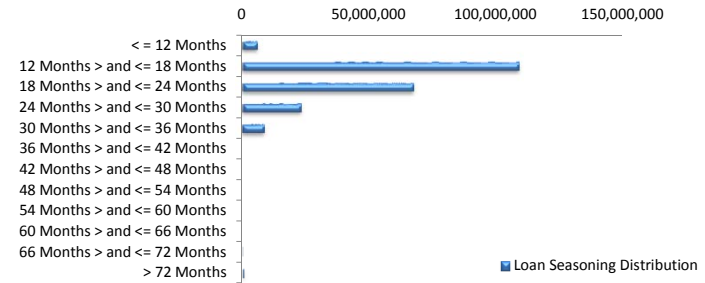
Balance Distribution

Current Balance	Balance	% Balance	Loan Count	% Loan Count
<= \$100,000	8,034,828	3.75%	162	16.63%
\$100,000 > and <= \$150,000	17,213,200	8.03%	137	14.07%
\$150,000 > and <= \$200,000	28,683,874	13.39%	163	16.74%
\$200,000 > and <= \$250,000	35,260,215	16.46%	155	15.91%
\$250,000 > and <= \$300,000	34,604,432	16.15%	125	12.83%
\$300,000 > and <= \$350,000	30,374,851	14.18%	94	9.65%
\$350,000 > and <= \$400,000	23,909,447	11.16%	64	6.57%
\$400,000 > and <= \$450,000	13,644,363	6.37%	32	3.29%
\$450,000 > and <= \$500,000	9,934,773	4.64%	21	2.16%
\$500,000 > and <= \$550,000	4,176,370	1.95%	8	0.82%
\$550,000 > and <= \$600,000	1,726,604	0.81%	3	0.31%
\$600,000 > and <= \$650,000	3,756,394	1.75%	6	0.62%
\$650,000 > and <= \$700,000	666,566	0.31%	1	0.10%
\$700,000 > and <= \$750,000	722,854	0.34%	1	0.10%
\$750,000 > and <= \$800,000	1,563,198	0.73%	2	0.21%
\$800,000 > and <= \$850,000	0	0.00%	0	0.00%
\$850,000 > and <= \$900,000	0	0.00%	0	0.00%
\$900,000 > and <= \$950,000	0	0.00%	0	0.00%
\$950,000 > and <= \$1,000,000	0	0.00%	0	0.00%
> \$1,000,000	0	0.00%	0	0.00%
Total	214,271,968	100.00%	974	100.00%



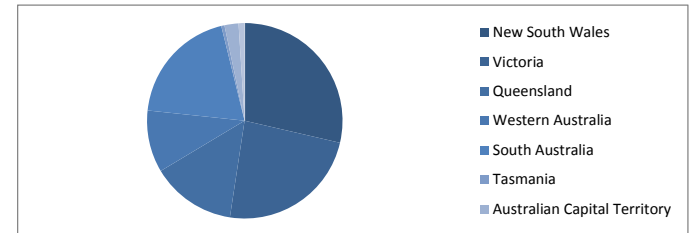
Loan Seasoning Distribution

Seasoning (Months)	Balance	% Balance	Loan Count	% Loan Count
<= 12 Months	5,951,568	2.78%	24	2.46%
12 Months > and <= 18 Months	108,593,762	50.68%	482	49.49%
18 Months > and <= 24 Months	67,242,991	31.38%	306	31.42%
24 Months > and <= 30 Months	23,104,322	10.78%	123	12.63%
30 Months > and <= 36 Months	8,770,106	4.09%	37	3.80%
36 Months > and <= 42 Months	0	0.00%	0	0.00%
42 Months > and <= 48 Months	0	0.00%	0	0.00%
48 Months > and <= 54 Months	0	0.00%	0	0.00%
54 Months > and <= 60 Months	0	0.00%	0	0.00%
60 Months > and <= 66 Months	0	0.00%	0	0.00%
66 Months > and <= 72 Months	181,775	0.08%	1	0.10%
> 72 Months	427,444	0.20%	1	0.10%
Total	214,271,968	100.00%	974	100.00%



Geographic Distribution

Jurisdiction State	Balance	% Balance	Loan Count	% Loan Count
New South Wales	61,336,618	28.63%	250	25.67%
Victoria	51,014,637	23.81%	222	22.79%
Queensland	30,023,825	14.01%	143	14.68%
Western Australia	22,003,740	10.27%	86	8.83%
South Australia	41,559,163	19.40%	237	24.33%
Tasmania	1,136,521	0.53%	7	0.72%
Australian Capital Territory	5,057,883	2.36%	19	1.95%
Northern Territory	2,139,582	1.00%	10	1.03%
No Data	0	0.00%	0	0.00%
Total	214,271,968	100.00%	974	100.00%



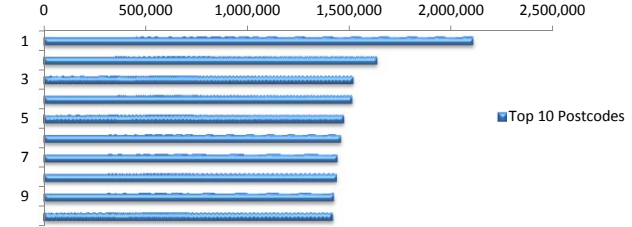
Locality

S&P Category	Balance	% Balance	Loan Count	% Loan Count
Metro	173,042,025	80.76%	760	78.03%
Non Metro	38,899,669	18.15%	206	21.15%
Inner City	2,330,275	1.09%	8	0.82%
Total	214,271,968	100.00%	974	100.00%



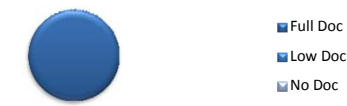
Top 10 Postcodes

Postcode	Balance	% Balance	Loan Count	% Loan Count
5108	2,107,405	0.98%	15	1.54%
2444	1,636,943	0.76%	6	0.62%
3141	1,519,801	0.71%	4	0.41%
3216	1,513,019	0.71%	6	0.62%
2017	1,473,944	0.69%	4	0.41%
5114	1,458,078	0.68%	10	1.03%
3132	1,440,371	0.67%	4	0.41%
2036	1,438,235	0.67%	4	0.41%
6062	1,423,987	0.66%	5	0.51%
6026	1,418,649	0.66%	5	0.51%
Total	15,430,431	7.20%	63	6.47%



Documentation

Document Type	Balance	% Balance	Loan Count	% Loan Count
Full Doc	214,271,968	100.00%	974	100.00%
Low Doc	0	0.00%	0	0.00%
No Doc	0	0.00%	0	0.00%
Total	214,271,968	100.00%	974	100.00%



Rate Type

Rate Type	Balance	% Balance	Loan Count	% Loan Count
Variable Rate	214,271,968	100.00%	974	100.00%
Fixed Rate	0	0.00%	0	0.00%
Total	214,271,968	100.00%	974	100.00%



Repayment Type

Repayment Type	Balance	% Balance	Loan Count	% Loan Count
Principal & Interest	167,373,201	78.11%	756	77.62%
Interest Only	45,825,515	21.39%	201	20.64%
Non-Billing	1,073,253	0.50%	17	1.75%
Total	214,271,968	100.00%	974	100.00%



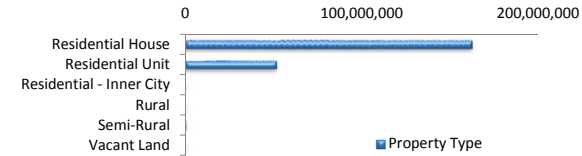
Loan Type

Product Category	Balance	% Balance	Loan Count	% Loan Count
Line of Credit	1,073,253	0.50%	17	1.75%
Term Loan	213,198,715	99.50%	957	98.25%
Total	214,271,968	100.00%	974	100.00%



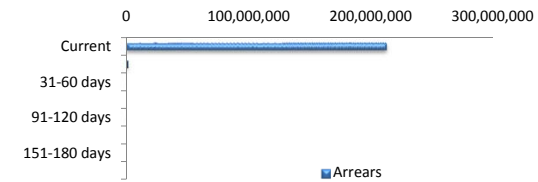
Property Type

Property Type	Balance	% Balance	Loan Count	% Loan Count
Residential House	162,270,250	75.73%	754	77.41%
Residential Unit	51,676,414	24.12%	219	22.48%
Residential - Inner City	0	0.00%	0	0.00%
Rural	0	0.00%	0	0.00%
Semi-Rural	325,304	0.15%	1	0.10%
Vacant Land	0	0.00%	0	0.00%
Total	214,271,968	100.00%	974	100.00%



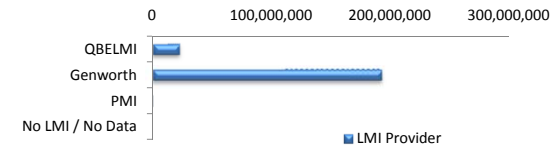
Arrears

Arrears Band	Balance	% Balance	Loan Count	% Loan Count
Current	212,476,456	99.16%	966	99.18%
1-30 days	1,381,115	0.64%	6	0.62%
31-60 days	306,534	0.14%	1	0.10%
61-90 days	0	0.00%	0	0.00%
91-120 days	107,864	0.05%	1	0.10%
121-150 days	0	0.00%	0	0.00%
151-180 days	0	0.00%	0	0.00%
181 days or more	0	0.00%	0	0.00%
Total	214,271,968	100.00%	974	100.00%



LMI Provider

LMI Provider	Balance	% Balance	Loan Count	% Loan Count
QBELMI	21,922,289	10.23%	122	12.53%
Genworth	191,922,236	89.57%	851	87.37%
PMI	427,444	0.20%	1	0.10%
No LMI / No Data	0	0.00%	0	0.00%
Total	214,271,968	100.00%	974	100.00%



Property Occupancy

Property Occupancy	Balance	% Balance	Loan Count	% Loan Count
Investment	51,344,787	23.96%	217	22.28%
Owner Occupier	162,927,181	76.04%	757	77.72%
Total	214,271,968	100.00%	974	100.00%



Default Statistics

Default Data	Amount	No. of Loans
Defaulted Loans	0.00	0.00
Loss on Sale	0.00	0.00
Claims on LMI	0.00	0.00
Claims paid by LMI	0.00	0.00
Claims Denied/Reduced	0.00	0.00
Loss covered by Excess Spread	0.00	N/A