

AFG Series 2013-2
Collateral Report



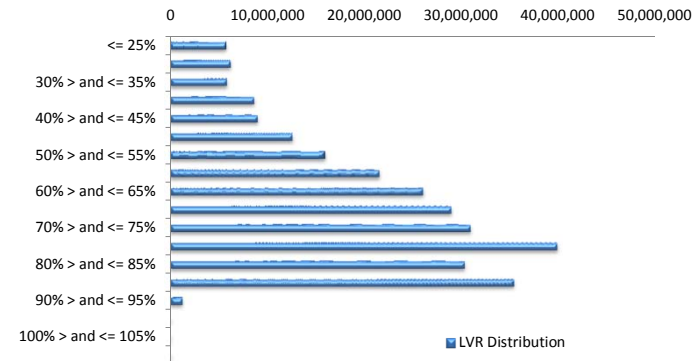
Model Period	3
Collection Period Start	01-Jan-14
Collection Period End	31-Jan-14
No. of Days	31
Interest Period Start	14-Jan-14
Interest Period End	13-Feb-14
No. of Days	31
Determination Date	11-Feb-14
Payment Date	14-Feb-14

Pool Statistics

Closing Balance of Mortgages	278,597,473
Number of Loans	1,063
Average Loan Size	262,086
Largest Loan Size	1,086,398
Smallest Loan Size	(3,566)
Weighted Average Interest Rate	4.91%
Weighted Average LVR	66.51%
Weighted Average Seasoning	14.34

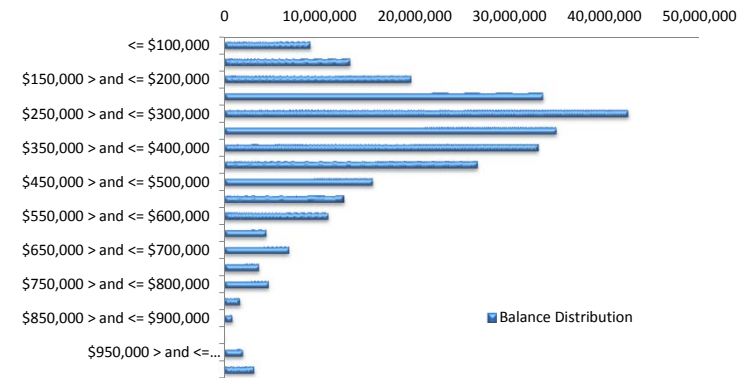
LVR Distribution

Current LTV	Balance	% Balance	Loan Count	% Loan Count
<= 25%	5,774,860	2.07%	65	6.11%
25% > and <= 30%	6,246,202	2.24%	38	3.57%
30% > and <= 35%	5,850,125	2.10%	35	3.29%
35% > and <= 40%	8,663,814	3.11%	43	4.05%
40% > and <= 45%	9,002,147	3.23%	51	4.80%
45% > and <= 50%	12,595,974	4.52%	50	4.70%
50% > and <= 55%	15,958,858	5.73%	63	5.93%
55% > and <= 60%	21,542,905	7.73%	82	7.71%
60% > and <= 65%	26,069,711	9.36%	97	9.13%
65% > and <= 70%	28,960,836	10.40%	102	9.60%
70% > and <= 75%	30,955,051	11.11%	95	8.94%
75% > and <= 80%	39,893,532	14.32%	125	11.76%
80% > and <= 85%	30,370,258	10.90%	94	8.84%
85% > and <= 90%	35,434,661	12.72%	119	11.19%
90% > and <= 95%	1,278,538	0.46%	4	0.38%
95% > and <= 100%	0	0.00%	0	0.00%
100% > and <= 105%	0	0.00%	0	0.00%
> 105%	0	0.00%	0	0.00%
Total	278,597,473	100.00%	1,063	100.00%



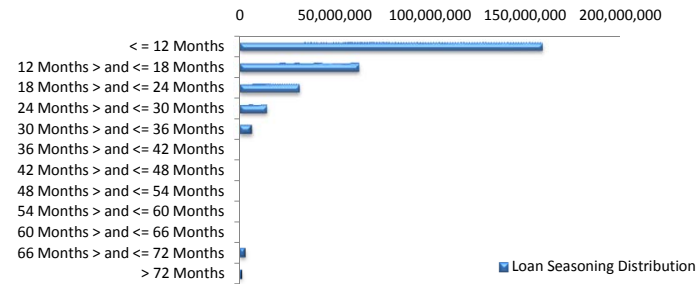
Balance Distribution

Current Balance	Balance	% Balance	Loan Count	% Loan Count
<= \$100,000	9,047,804	3.25%	169	15.90%
\$100,000 > and <= \$150,000	13,223,559	4.75%	106	9.97%
\$150,000 > and <= \$200,000	19,629,004	7.05%	113	10.63%
\$200,000 > and <= \$250,000	33,470,846	12.01%	149	14.02%
\$250,000 > and <= \$300,000	42,403,196	15.22%	155	14.58%
\$300,000 > and <= \$350,000	34,890,977	12.52%	108	10.16%
\$350,000 > and <= \$400,000	32,974,759	11.84%	88	8.28%
\$400,000 > and <= \$450,000	26,618,599	9.55%	63	5.93%
\$450,000 > and <= \$500,000	15,599,832	5.60%	33	3.10%
\$500,000 > and <= \$550,000	12,578,707	4.52%	24	2.26%
\$550,000 > and <= \$600,000	10,930,423	3.92%	19	1.79%
\$600,000 > and <= \$650,000	4,417,219	1.59%	7	0.66%
\$650,000 > and <= \$700,000	6,823,320	2.45%	10	0.94%
\$700,000 > and <= \$750,000	3,664,875	1.32%	5	0.47%
\$750,000 > and <= \$800,000	4,657,386	1.67%	6	0.56%
\$800,000 > and <= \$850,000	1,672,950	0.60%	2	0.19%
\$850,000 > and <= \$900,000	863,072	0.31%	1	0.09%
\$900,000 > and <= \$950,000	0	0.00%	0	0.00%
\$950,000 > and <= \$1,000,000	1,979,803	0.71%	2	0.19%
> \$1,000,000	3,151,141	1.13%	3	0.28%
Total	278,597,473	100.00%	1,063	100.00%



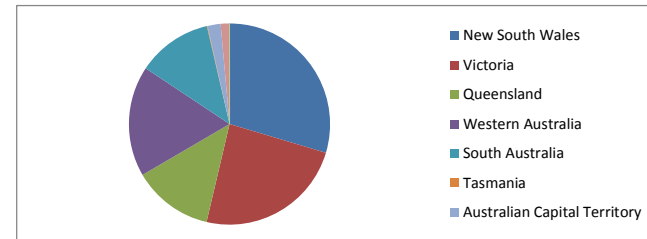
Loan Seasoning Distribution

Seasoning (Months)	Balance	% Balance	Loan Count	% Loan Count
<= 12 Months	158,773,935	56.99%	610	57.38%
12 Months > and <= 18 Months	62,822,958	22.55%	230	21.64%
18 Months > and <= 24 Months	31,640,900	11.36%	120	11.29%
24 Months > and <= 30 Months	14,426,539	5.18%	62	5.83%
30 Months > and <= 36 Months	6,517,432	2.34%	26	2.45%
36 Months > and <= 42 Months	0	0.00%	0	0.00%
42 Months > and <= 48 Months	0	0.00%	0	0.00%
48 Months > and <= 54 Months	0	0.00%	0	0.00%
54 Months > and <= 60 Months	0	0.00%	0	0.00%
60 Months > and <= 66 Months	0	0.00%	0	0.00%
66 Months > and <= 72 Months	3,074,396	1.10%	11	1.03%
> 72 Months	1,341,315	0.48%	4	0.38%
Total	278,597,473	100.00%	1,063	100.00%



Geographic Distribution

Jurisdiction State	Balance	% Balance	Loan Count	% Loan Count
New South Wales	82,519,747	29.62%	288	27.09%
Victoria	66,946,656	24.03%	277	26.06%
Queensland	36,076,510	12.95%	130	12.23%
Western Australia	49,434,403	17.74%	163	15.33%
South Australia	33,617,644	12.07%	173	16.27%
Tasmania	232,305	0.08%	2	0.19%
Australian Capital Territory	5,862,786	2.10%	17	1.60%
Northern Territory	3,907,423	1.40%	13	1.22%
No Data	0	0.00%	0	0.00%
Total	278,597,473	100.00%	1,063	100.00%



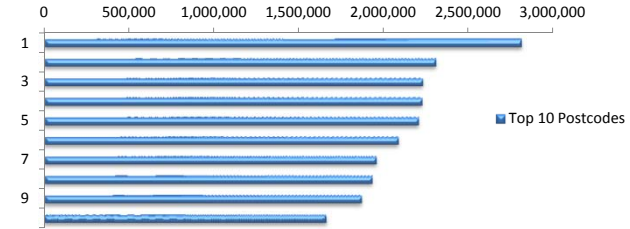
Locality

S&P Category	Balance	% Balance	Loan Count	% Loan Count
Metro	226,330,732	81.24%	848	79.77%
Non Metro	46,941,666	16.85%	202	19.00%
Inner City	5,325,075	1.91%	13	1.22%
Total	278,597,473	100.00%	1,063	100.00%



Top 10 Postcodes

Postcode	Balance	% Balance	Loan Count	% Loan Count
6065	2,812,679	1.01%	7	0.66%
2560	2,308,817	0.83%	8	0.75%
3121	2,231,301	0.80%	5	0.47%
2515	2,228,551	0.80%	6	0.56%
6030	2,207,601	0.79%	6	0.56%
3216	2,088,744	0.75%	7	0.66%
2913	1,958,364	0.70%	7	0.66%
2170	1,932,905	0.69%	7	0.66%
6164	1,870,523	0.67%	6	0.56%
5114	1,662,028	0.60%	8	0.75%
Total	21,301,512	7.65%	67	6.30%



Documentation

Document Type	Balance	% Balance	Loan Count	% Loan Count
Full Doc	278,597,473	100.00%	1,063	100.00%
Low Doc	0	0.00%	0	0.00%
No Doc	0	0.00%	0	0.00%
Total	278,597,473	100.00%	1,063	100.00%



Rate Type

Rate Type	Balance	% Balance	Loan Count	% Loan Count
Variable Rate	278,597,473	100.00%	1,063	100.00%
Fixed Rate	0	0.00%	0	0.00%
Total	278,597,473	100.00%	1,063	100.00%



Repayment Type

Repayment Type	Balance	% Balance	Loan Count	% Loan Count
Principal & Interest	222,640,238	79.91%	838	78.83%
Interest Only	54,833,718	19.68%	205	19.29%
Non-Billing	1,123,517	0.40%	20	1.88%
Total	278,597,473	100.00%	1,063	100.00%



Loan Type

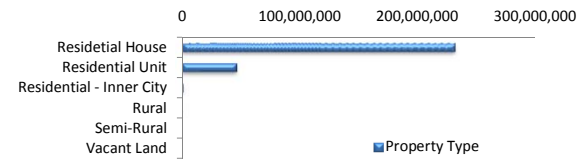
Product Category	Balance	% Balance	Loan Count	% Loan Count
Line of Credit	1,123,517	0.40%	20	1.88%
Term Loan	277,473,956	99.60%	1,043	98.12%
Total	278,597,473	100.00%	1,063	100.00%



■ Line of Credit
■ Term Loan

Property Type

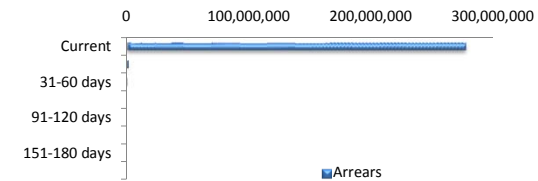
Property Type	Balance	% Balance	Loan Count	% Loan Count
Residential House	231,200,408	82.99%	868	81.66%
Residential Unit	46,261,981	16.61%	191	17.97%
Residential - Inner City	821,988	0.30%	2	0.19%
Rural	313,096	0.11%	2	0.19%
Semi-Rural	0	0.00%	0	0.00%
Vacant Land	0	0.00%	0	0.00%
Total	278,597,473	100.00%	1,063	100.00%



■ Property Type

Arrears

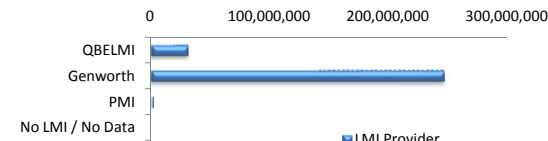
Arrears Band	Balance	% Balance	Loan Count	% Loan Count
Current	277,112,557	99.47%	1,059	99.62%
1-30 days	1,152,522	0.41%	3	0.28%
31-60 days	332,395	0.12%	1	0.09%
61-90 days	0	0.00%	0	0.00%
91-120 days	0	0.00%	0	0.00%
121-150 days	0	0.00%	0	0.00%
151-180 days	0	0.00%	0	0.00%
181 days or more	0	0.00%	0	0.00%
Total	278,597,473	100.00%	1,063	100.00%



■ Arrears

LMI Provider

LMI Provider	Balance	% Balance	Loan Count	% Loan Count
QBELMI	31,034,037	11.14%	117	11.01%
Genworth	246,217,556	88.38%	942	88.62%
PMI	1,345,880	0.48%	4	0.38%
No LMI / No Data	0	0.00%	0	0.00%
Total	278,597,473	100.00%	1,063	100.00%



■ LMI Provider

Property Occupancy

Property Occupancy	Balance	% Balance	Loan Count	% Loan Count
Investment	63,098,133	22.65%	221	20.79%
Owner Occupier	215,499,340	77.35%	842	79.21%
Total	278,597,473	100.00%	1,063	100.00%



■ Investment
■ Owner Occupier

Default Statistics

Default Data	Amount	No. of Loans
Defaulted Loans	0.00	0.00
Loss on Sale	0.00	0.00
Claims on LMI	0.00	0.00
Claims paid by LMI	0.00	0.00
Claims Denied/Reduced	0.00	0.00
Loss covered by Excess Spread	0.00	N/A