

AFG 2013-1 Trust
Collateral Report



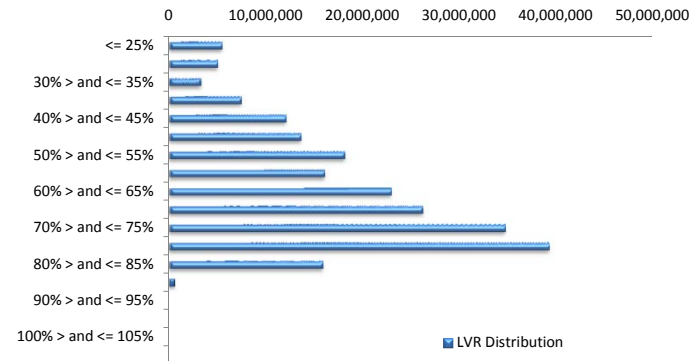
Model Period	11
Collection Period Start	01-Jan-14
Collection Period End	31-Jan-14
No. of Days	31
Interest Period Start	10-Jan-14
Interest Period End	09-Feb-14
No. of Days	31
Determination Date	05-Feb-14
Payment Date	10-Feb-14

Pool Statistics

Closing Balance of Mortgages	220,508,018
Number of Loans	996
Average Loan Size	221,394
Largest Loan Size	789,126
Smallest Loan Size	0
Weighted Average Interest Rate	4.94%
Weighted Average LVR	62.42%
Weighted Average Seasoning	18.31

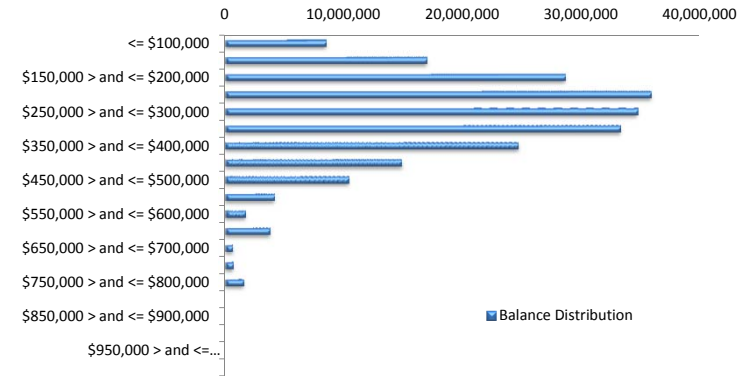
LVR Distribution

Current LTV	Balance	% Balance	Loan Count	% Loan Count
<= 25%	5,501,986	2.50%	54	5.42%
25% > and <= 30%	5,048,087	2.29%	37	3.71%
30% > and <= 35%	3,291,065	1.49%	21	2.11%
35% > and <= 40%	7,428,994	3.37%	49	4.92%
40% > and <= 45%	12,097,354	5.49%	57	5.72%
45% > and <= 50%	13,619,274	6.18%	68	6.83%
50% > and <= 55%	18,076,171	8.20%	77	7.73%
55% > and <= 60%	16,065,713	7.29%	78	7.83%
60% > and <= 65%	22,936,531	10.40%	96	9.64%
65% > and <= 70%	26,126,765	11.85%	110	11.04%
70% > and <= 75%	34,694,413	15.73%	150	15.06%
75% > and <= 80%	39,212,069	17.78%	144	14.46%
80% > and <= 85%	15,821,606	7.18%	53	5.32%
85% > and <= 90%	587,989	0.27%	2	0.20%
90% > and <= 95%	0	0.00%	0	0.00%
95% > and <= 100%	0	0.00%	0	0.00%
100% > and <= 105%	0	0.00%	0	0.00%
> 105%	0	0.00%	0	0.00%
Total	220,508,018	100.00%	996	100.00%



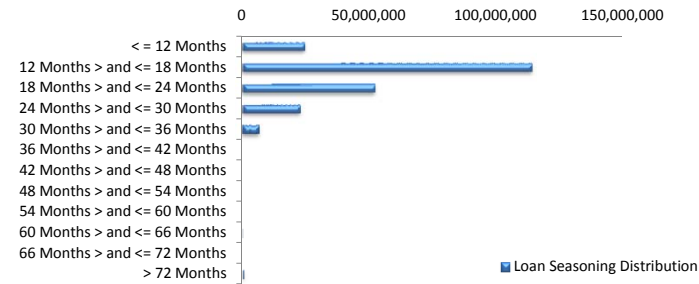
Balance Distribution

Current Balance	Balance	% Balance	Loan Count	% Loan Count
<= \$100,000	8,494,991	3.85%	167	16.77%
\$100,000 > and <= \$150,000	16,977,018	7.70%	135	13.55%
\$150,000 > and <= \$200,000	28,638,122	12.99%	163	16.37%
\$200,000 > and <= \$250,000	35,843,853	16.26%	158	15.86%
\$250,000 > and <= \$300,000	34,689,257	15.73%	126	12.65%
\$300,000 > and <= \$350,000	33,235,383	15.07%	103	10.34%
\$350,000 > and <= \$400,000	24,675,499	11.19%	66	6.63%
\$400,000 > and <= \$450,000	14,882,047	6.75%	35	3.51%
\$450,000 > and <= \$500,000	10,441,609	4.74%	22	2.21%
\$500,000 > and <= \$550,000	4,179,536	1.90%	8	0.80%
\$550,000 > and <= \$600,000	1,729,834	0.78%	3	0.30%
\$600,000 > and <= \$650,000	3,764,616	1.71%	6	0.60%
\$650,000 > and <= \$700,000	666,841	0.30%	1	0.10%
\$700,000 > and <= \$750,000	724,588	0.33%	1	0.10%
\$750,000 > and <= \$800,000	1,564,825	0.71%	2	0.20%
\$800,000 > and <= \$850,000	0	0.00%	0	0.00%
\$850,000 > and <= \$900,000	0	0.00%	0	0.00%
\$900,000 > and <= \$950,000	0	0.00%	0	0.00%
\$950,000 > and <= \$1,000,000	0	0.00%	0	0.00%
> \$1,000,000	0	0.00%	0	0.00%
Total	220,508,018	100.00%	996	100.00%



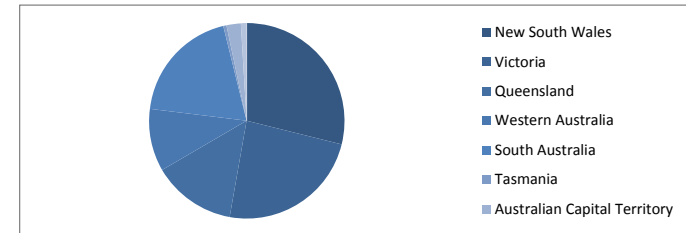
Loan Seasoning Distribution

Seasoning (Months)	Balance	% Balance	Loan Count	% Loan Count
< = 12 Months	24,555,126	11.14%	105	10.54%
12 Months > and <= 18 Months	113,682,109	51.55%	505	50.70%
18 Months > and <= 24 Months	52,185,745	23.67%	243	24.40%
24 Months > and <= 30 Months	22,690,768	10.29%	115	11.55%
30 Months > and <= 36 Months	6,784,769	3.08%	26	2.61%
36 Months > and <= 42 Months	0	0.00%	0	0.00%
42 Months > and <= 48 Months	0	0.00%	0	0.00%
48 Months > and <= 54 Months	0	0.00%	0	0.00%
54 Months > and <= 60 Months	0	0.00%	0	0.00%
60 Months > and <= 66 Months	181,859	0.08%	1	0.10%
66 Months > and <= 72 Months	0	0.00%	0	0.00%
> 72 Months	427,641	0.19%	1	0.10%
Total	220,508,018	100.00%	996	100.00%



Geographic Distribution

Jurisdiction State	Balance	% Balance	Loan Count	% Loan Count
New South Wales	63,678,601	28.88%	256	25.70%
Victoria	52,725,205	23.91%	229	22.99%
Queensland	30,518,556	13.84%	144	14.46%
Western Australia	22,793,832	10.34%	89	8.94%
South Australia	42,254,947	19.16%	241	24.20%
Tasmania	1,141,120	0.52%	7	0.70%
Australian Capital Territory	5,254,106	2.38%	20	2.01%
Northern Territory	2,141,651	0.97%	10	1.00%
No Data	0	0.00%	0	0.00%
Total	220,508,018	100.00%	996	100.00%



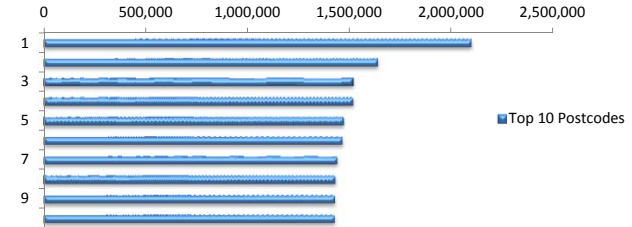
Locality

S&P Category	Balance	% Balance	Loan Count	% Loan Count
Metro	178,329,357	80.87%	778	78.11%
Non Metro	39,846,879	18.07%	210	21.08%
Inner City	2,331,782	1.06%	8	0.80%
Total	220,508,018	100.00%	996	100.00%



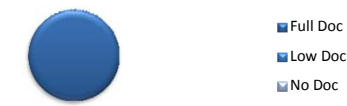
Top 10 Postcodes

Postcode	Balance	% Balance	Loan Count	% Loan Count
5108	2,098,723	0.95%	15	1.51%
2444	1,640,837	0.74%	6	0.60%
3216	1,520,601	0.69%	6	0.60%
3141	1,520,261	0.69%	4	0.40%
2017	1,473,335	0.67%	4	0.40%
5114	1,465,639	0.66%	10	1.00%
2036	1,440,797	0.65%	4	0.40%
2155	1,431,234	0.65%	5	0.50%
6026	1,429,861	0.65%	5	0.50%
3132	1,428,878	0.65%	4	0.40%
Total	15,450,166	7.01%	63	6.33%



Documentation

Document Type	Balance	% Balance	Loan Count	% Loan Count
Full Doc	220,508,018	100.00%	996	100.00%
Low Doc	0	0.00%	0	0.00%
No Doc	0	0.00%	0	0.00%
Total	220,508,018	100.00%	996	100.00%



Rate Type

Rate Type	Balance	% Balance	Loan Count	% Loan Count
Variable Rate	220,508,018	100.00%	996	100.00%
Fixed Rate	0	0.00%	0	0.00%
Total	220,508,018	100.00%	996	100.00%



Repayment Type

Repayment Type	Balance	% Balance	Loan Count	% Loan Count
Principal & Interest	172,882,281	78.40%	774	77.71%
Interest Only	46,550,792	21.11%	205	20.58%
Non-Billing	1,074,945	0.49%	17	1.71%
Total	220,508,018	100.00%	996	100.00%



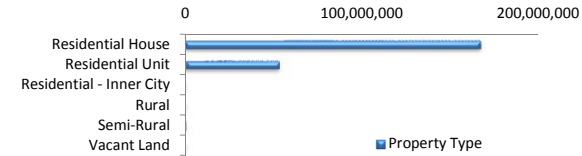
Loan Type

Product Category	Balance	% Balance	Loan Count	% Loan Count
Line of Credit	1,074,945	0.49%	17	1.71%
Term Loan	219,433,073	99.51%	979	98.29%
Total	220,508,018	100.00%	996	100.00%



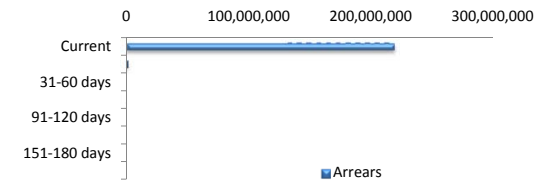
Property Type

Property Type	Balance	% Balance	Loan Count	% Loan Count
Residential House	167,023,033	75.74%	771	77.41%
Residential Unit	53,157,282	24.11%	224	22.49%
Residential - Inner City	0	0.00%	0	0.00%
Rural	0	0.00%	0	0.00%
Semi-Rural	327,703	0.15%	1	0.10%
Vacant Land	0	0.00%	0	0.00%
Total	220,508,018	100.00%	996	100.00%



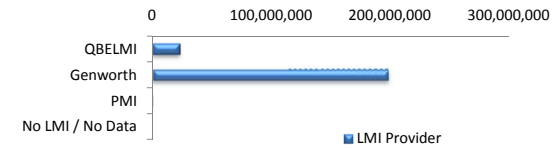
Arrears

Arrears Band	Balance	% Balance	Loan Count	% Loan Count
Current	218,814,797	99.23%	990	99.40%
1-30 days	1,585,767	0.72%	5	0.50%
31-60 days	0	0.00%	0	0.00%
61-90 days	107,454	0.05%	1	0.10%
91-120 days	0	0.00%	0	0.00%
121-150 days	0	0.00%	0	0.00%
151-180 days	0	0.00%	0	0.00%
181 days or more	0	0.00%	0	0.00%
Total	220,508,018	100.00%	996	100.00%



LMI Provider

LMI Provider	Balance	% Balance	Loan Count	% Loan Count
QBELMI	22,369,632	10.14%	123	12.35%
Genworth	197,710,744	89.66%	872	87.55%
PMI	427,641	0.19%	1	0.10%
No LMI / No Data	0	0.00%	0	0.00%
Total	220,508,018	100.00%	996	100.00%



Property Occupancy

Property Occupancy	Balance	% Balance	Loan Count	% Loan Count
Investment	51,821,378	23.50%	218	21.89%
Owner Occupier	168,686,640	76.50%	778	78.11%
Total	220,508,018	100.00%	996	100.00%



Default Statistics

Default Data	Amount	No. of Loans
Defaulted Loans	0.00	0.00
Loss on Sale	0.00	0.00
Claims on LMI	0.00	0.00
Claims paid by LMI	0.00	0.00
Claims Denied/Reduced	0.00	0.00
Loss covered by Excess Spread	0.00	N/A