

AFG Series 2013-2
Collateral Report



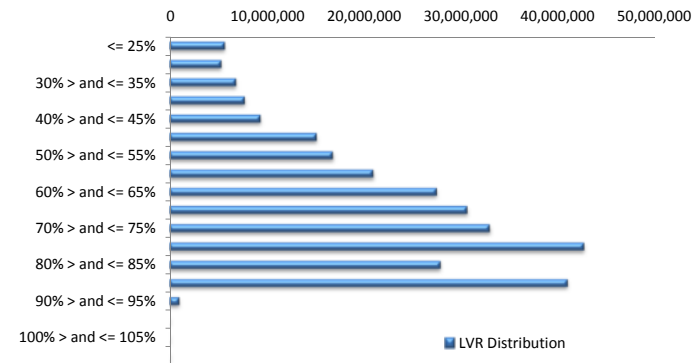
Model Period	1
Collection Period Start	30-Oct-13
Collection Period End	30-Nov-13
No. of Days	32
Interest Period Start	30-Oct-13
Interest Period End	15-Dec-13
No. of Days	47
Determination Date	11-Dec-13
Payment Date	16-Dec-13

Pool Statistics

Closing Balance of Mortgages	291,982,585
Number of Loans	1,099
Average Loan Size	265,680
Largest Loan Size	1,089,152
Smallest Loan Size	(3,319)
Weighted Average Interest Rate	4.91%
Weighted Average LVR	66.77%
Weighted Average Seasoning	3,802.38

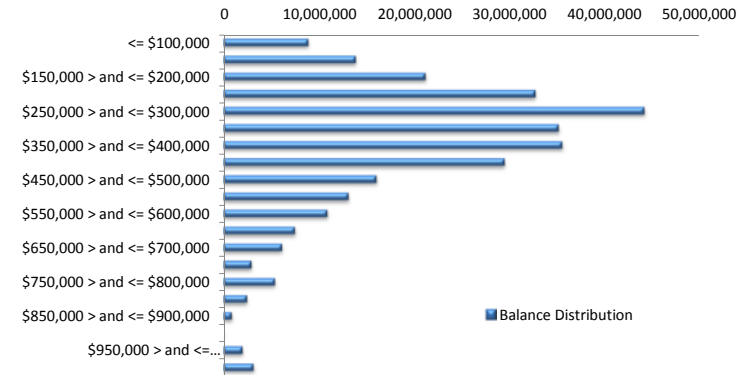
LVR Distribution

Current LTV	Balance	% Balance	Loan Count	% Loan Count
<= 25%	5,707,223	1.95%	59	5.37%
25% > and <= 30%	5,344,266	1.83%	29	2.64%
30% > and <= 35%	6,871,844	2.35%	40	3.64%
35% > and <= 40%	7,741,180	2.65%	46	4.19%
40% > and <= 45%	9,370,435	3.21%	47	4.28%
45% > and <= 50%	15,176,089	5.20%	64	5.82%
50% > and <= 55%	16,830,750	5.76%	66	6.01%
55% > and <= 60%	20,999,191	7.19%	79	7.19%
60% > and <= 65%	27,545,673	9.43%	102	9.28%
65% > and <= 70%	30,682,761	10.51%	110	10.01%
70% > and <= 75%	33,016,354	11.31%	96	8.74%
75% > and <= 80%	42,720,311	14.63%	138	12.56%
80% > and <= 85%	27,935,974	9.57%	84	7.64%
85% > and <= 90%	41,032,092	14.05%	136	12.37%
90% > and <= 95%	1,008,442	0.35%	3	0.27%
95% > and <= 100%	0	0.00%	0	0.00%
100% > and <= 105%	0	0.00%	0	0.00%
> 105%	0	0.00%	0	0.00%
Total	291,982,585	100.00%	1,099	100.00%



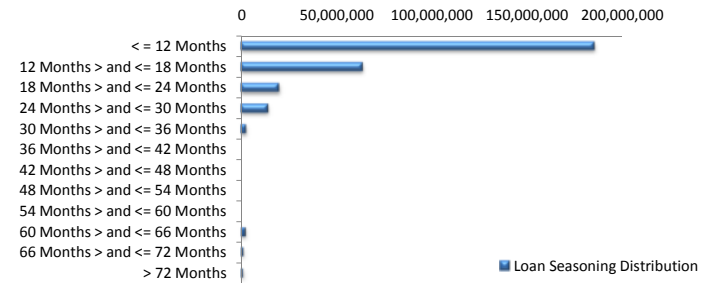
Balance Distribution

Current Balance	Balance	% Balance	Loan Count	% Loan Count
<= \$100,000	8,931,105	3.06%	165	15.01%
\$100,000 > and <= \$150,000	13,901,395	4.76%	111	10.10%
\$150,000 > and <= \$200,000	21,205,917	7.26%	122	11.10%
\$200,000 > and <= \$250,000	32,794,366	11.23%	146	13.28%
\$250,000 > and <= \$300,000	44,219,129	15.14%	162	14.74%
\$300,000 > and <= \$350,000	35,220,737	12.06%	109	9.92%
\$350,000 > and <= \$400,000	35,586,021	12.19%	95	8.64%
\$400,000 > and <= \$450,000	29,547,579	10.12%	70	6.37%
\$450,000 > and <= \$500,000	16,054,289	5.50%	34	3.09%
\$500,000 > and <= \$550,000	13,115,301	4.49%	25	2.27%
\$550,000 > and <= \$600,000	10,892,547	3.73%	19	1.73%
\$600,000 > and <= \$650,000	7,503,273	2.57%	12	1.09%
\$650,000 > and <= \$700,000	6,141,246	2.10%	9	0.82%
\$700,000 > and <= \$750,000	2,960,705	1.01%	4	0.36%
\$750,000 > and <= \$800,000	5,414,408	1.85%	7	0.64%
\$800,000 > and <= \$850,000	2,485,241	0.85%	3	0.27%
\$850,000 > and <= \$900,000	863,077	0.30%	1	0.09%
\$900,000 > and <= \$950,000	0	0.00%	0	0.00%
\$950,000 > and <= \$1,000,000	1,988,878	0.68%	2	0.18%
> \$1,000,000	3,157,372	1.08%	3	0.27%
Total	291,982,585	100.00%	1,099	100.00%



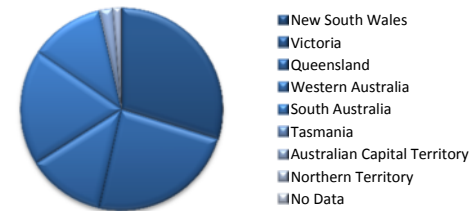
Loan Seasoning Distribution

Seasoning (Months)	Balance	% Balance	Loan Count	% Loan Count
<= 12 Months	185,769,090	63.62%	696	63.50%
12 Months > and <= 18 Months	64,143,267	21.97%	230	20.99%
18 Months > and <= 24 Months	20,245,797	6.93%	86	7.85%
24 Months > and <= 30 Months	14,483,729	4.96%	62	5.66%
30 Months > and <= 36 Months	2,916,443	1.00%	10	0.91%
36 Months > and <= 42 Months	0	0.00%	0	0.00%
42 Months > and <= 48 Months	0	0.00%	0	0.00%
48 Months > and <= 54 Months	0	0.00%	0	0.00%
54 Months > and <= 60 Months	0	0.00%	0	0.00%
60 Months > and <= 66 Months	2,138,415	0.73%	6	0.55%
66 Months > and <= 72 Months	1,254,111	0.43%	6	0.55%
> 72 Months	1,031,733	0.35%	0	0.00%
Total	291,982,585	100.00%	1,096	100.00%



Geographic Distribution

Jurisdiction State	Balance	% Balance	Loan Count	% Loan Count
New South Wales	87,011,367	29.80%	301	27.39%
Victoria	69,375,081	23.76%	280	25.48%
Queensland	36,416,800	12.47%	132	12.01%
Western Australia	54,099,887	18.53%	175	15.92%
South Australia	34,700,445	11.88%	178	16.20%
Tasmania	297,748	0.10%	2	0.18%
Australian Capital Territory	6,170,511	2.11%	18	1.64%
Northern Territory	3,910,746	1.34%	13	1.18%
No Data	0	0.00%	0	0.00%
Total	291,982,585	100.00%	1,099	100.00%



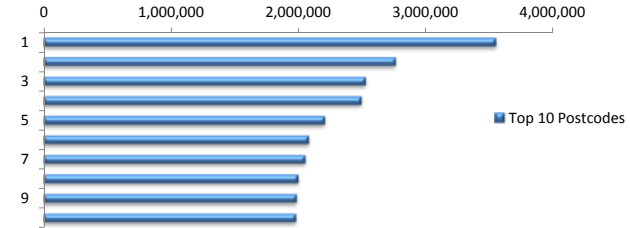
Locality

S&P Category	Balance	% Balance	Loan Count	% Loan Count
Metro	237,873,645	81.47%	876	79.71%
Non Metro	48,473,273	16.60%	209	19.02%
Inner City	5,635,667	1.93%	14	1.27%
Total	291,982,585	100.00%	1,099	100.00%



Top 10 Postcodes

Postcode	Balance	% Balance	Loan Count	% Loan Count
6065	3,553,216	1.22%	9	0.82%
3121	2,764,341	0.95%	6	0.55%
2560	2,528,032	0.87%	9	0.82%
2515	2,493,310	0.85%	7	0.64%
6030	2,206,626	0.76%	6	0.55%
3216	2,081,553	0.71%	7	0.64%
6155	2,053,525	0.70%	5	0.45%
6107	1,999,543	0.68%	7	0.64%
2170	1,986,922	0.68%	7	0.64%
2913	1,979,965	0.68%	7	0.64%
Total	23,647,033	8.10%	70	6.37%



Documentation

Document Type	Balance	% Balance	Loan Count	% Loan Count
Full Doc	291,982,585	100.00%	1,099	100.00%
Low Doc	0	0.00%	0	0.00%
No Doc	0	0.00%	0	0.00%
Total	291,982,585	100.00%	1,099	100.00%



Rate Type

Rate Type	Balance	% Balance	Loan Count	% Loan Count
Variable Rate	291,982,585	100.00%	1,099	100.00%
Fixed Rate	0	0.00%	0	0.00%
Total	291,982,585	100.00%	1,099	100.00%



Repayment Type

Repayment Type	Balance	% Balance	Loan Count	% Loan Count
Principal & Interest	232,721,530	79.70%	864	78.62%
Interest Only	58,110,559	19.90%	214	19.47%
Non-Billing	1,150,496	0.39%	21	1.91%
Total	291,982,585	100.00%	1,099	100.00%



Loan Type

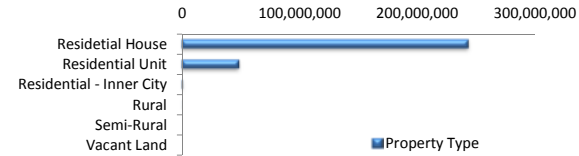
Product Category	Balance	% Balance	Loan Count	% Loan Count
Line of Credit	1,150,496	0.39%	21	1.91%
Term Loan	290,832,089	99.61%	1,078	98.09%
Total	291,982,585	100.00%	1,099	100.00%



■ Line of Credit
■ Term Loan

Property Type

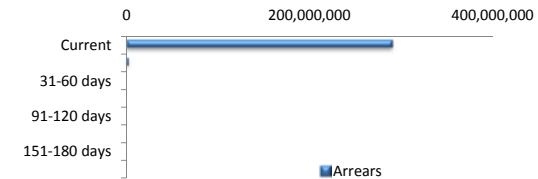
Property Type	Balance	% Balance	Loan Count	% Loan Count
Residential House	242,416,523	83.02%	898	81.71%
Residential Unit	48,412,846	16.58%	197	17.93%
Residential - Inner City	852,137	0.29%	2	0.18%
Rural	301,079	0.10%	2	0.18%
Semi-Rural	0	0.00%	0	0.00%
Vacant Land	0	0.00%	0	0.00%
Total	291,982,585	100.00%	1,099	100.00%



■ Property Type

Arrears

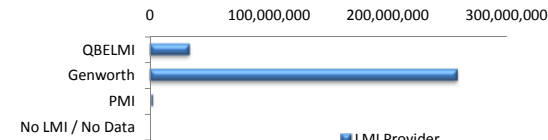
Arrears Band	Balance	% Balance	Loan Count	% Loan Count
Current	289,795,022	99.25%	1,095	99.64%
1-30 days	2,187,563	0.75%	4	0.36%
31-60 days	0	0.00%	0	0.00%
61-90 days	0	0.00%	0	0.00%
91-120 days	0	0.00%	0	0.00%
121-150 days	0	0.00%	0	0.00%
151-180 days	0	0.00%	0	0.00%
181 days or more	0	0.00%	0	0.00%
Total	291,982,585	100.00%	1,099	100.00%



■ Arrears

LMI Provider

LMI Provider	Balance	% Balance	Loan Count	% Loan Count
QBELMI	32,827,672	11.24%	121	11.01%
Genworth	257,810,179	88.30%	974	88.63%
PMI	1,344,734	0.46%	4	0.36%
No LMI / No Data	0	0.00%	0	0.00%
Total	291,982,585	100.00%	1,099	100.00%



■ LMI Provider

Property Occupancy

Property Occupancy	Balance	% Balance	Loan Count	% Loan Count
Investment	66,461,520	22.76%	232	21.11%
Owner Occupier	225,521,065	77.24%	867	78.89%
Total	291,982,585	100.00%	1,099	100.00%



■ Investment
■ Owner Occupier

Default Statistics

Default Data	Amount	No. of Loans
Defaulted Loans	0.00	0.00
Loss on Sale	0.00	0.00
Claims on LMI	0.00	0.00
Claims paid by LMI	0.00	0.00
Claims Denied/Reduced	0.00	0.00
Loss covered by Excess Spread	0.00	N/A