

**AFG 2013-1 Trust
Collateral Report**

Model Period	4
Collection Period Start	01-Jun-13
Collection Period End	30-Jun-13
No. of Days	30
Interest Period Start	11-Jun-13
Interest Period End	09-Jul-13
No. of Days	29
Determination Date	05-Jul-13
Payment Date	10-Jul-13

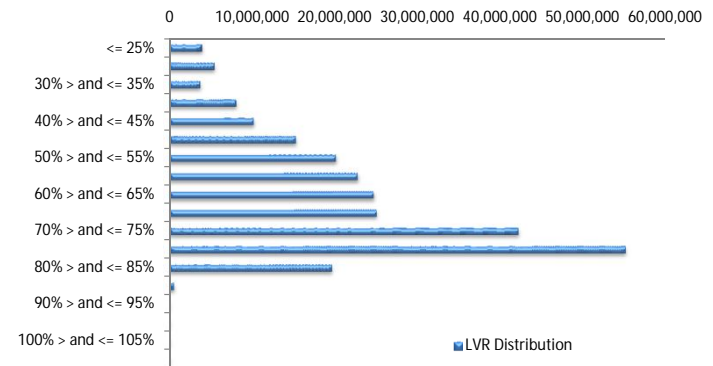


Pool Statistics

Closing Balance of Mortgages	257,332,332
Number of Loans	1,114
Average Loan Size	230,999
Largest Loan Size	795,713
Smallest Loan Size	0
Weighted Average Interest Rate	5.19%
Weighted Average LVR	63.89%
Weighted Average Seasoning	11.43

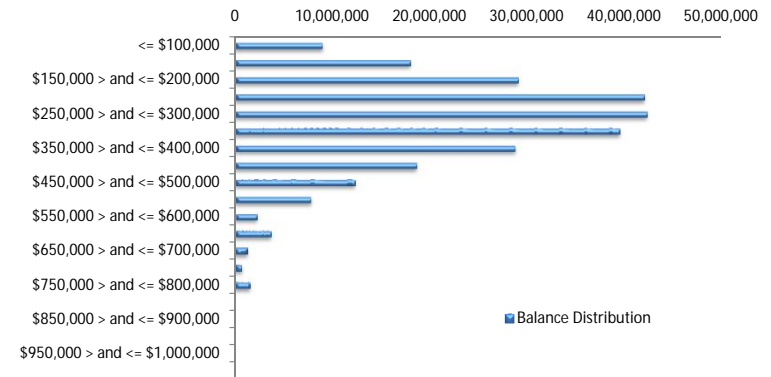
LVR Distribution

Current LTV	Balance	% Balance	Loan Count	% Loan Count
<= 25%	4,000,979	1.55%	38	3.41%
25% > and <= 30%	5,478,378	2.13%	37	3.32%
30% > and <= 35%	3,769,555	1.46%	25	2.24%
35% > and <= 40%	8,131,331	3.16%	47	4.22%
40% > and <= 45%	10,222,362	3.97%	52	4.67%
45% > and <= 50%	15,324,645	5.96%	72	6.46%
50% > and <= 55%	20,158,305	7.83%	81	7.27%
55% > and <= 60%	22,783,175	8.85%	100	8.98%
60% > and <= 65%	24,708,373	9.60%	106	9.52%
65% > and <= 70%	25,084,787	9.75%	110	9.87%
70% > and <= 75%	42,219,421	16.41%	173	15.53%
75% > and <= 80%	55,170,877	21.44%	203	18.22%
80% > and <= 85%	19,692,521	7.65%	68	6.10%
85% > and <= 90%	587,625	0.23%	2	0.18%
90% > and <= 95%	0	0.00%	0	0.00%
95% > and <= 100%	0	0.00%	0	0.00%
100% > and <= 105%	0	0.00%	0	0.00%
> 105%	0	0.00%	0	0.00%
Total	257,332,332	100.00%	1,114	100.00%



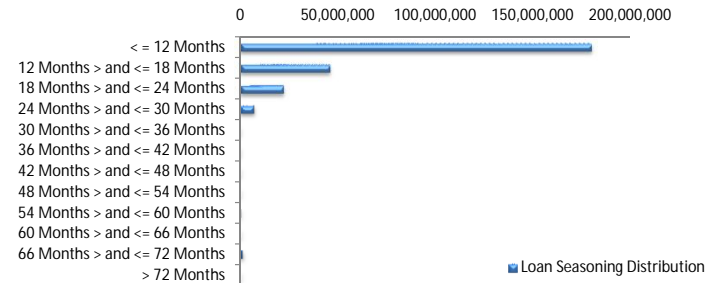
Balance Distribution

Current Balance	Balance	% Balance	Loan Count	% Loan Count
<= \$100,000	9,004,516	3.50%	168	15.08%
\$100,000 > and <= \$150,000	18,001,548	7.00%	141	12.66%
\$150,000 > and <= \$200,000	29,113,961	11.31%	166	14.90%
\$200,000 > and <= \$250,000	42,039,048	16.34%	186	16.70%
\$250,000 > and <= \$300,000	42,329,755	16.45%	154	13.82%
\$300,000 > and <= \$350,000	39,507,820	15.35%	122	10.95%
\$350,000 > and <= \$400,000	28,796,881	11.19%	77	6.91%
\$400,000 > and <= \$450,000	18,687,721	7.26%	44	3.95%
\$450,000 > and <= \$500,000	12,343,635	4.80%	26	2.33%
\$500,000 > and <= \$550,000	7,835,355	3.04%	15	1.35%
\$550,000 > and <= \$600,000	2,291,843	0.89%	4	0.36%
\$600,000 > and <= \$650,000	3,759,836	1.46%	6	0.54%
\$650,000 > and <= \$700,000	1,320,093	0.51%	2	0.18%
\$700,000 > and <= \$750,000	729,272	0.28%	1	0.09%
\$750,000 > and <= \$800,000	1,571,048	0.61%	2	0.18%
\$800,000 > and <= \$850,000	0	0.00%	0	0.00%
\$850,000 > and <= \$900,000	0	0.00%	0	0.00%
\$900,000 > and <= \$950,000	0	0.00%	0	0.00%
\$950,000 > and <= \$1,000,000	0	0.00%	0	0.00%
> \$1,000,000	0	0.00%	0	0.00%
Total	257,332,332	100.00%	1,114	100.00%



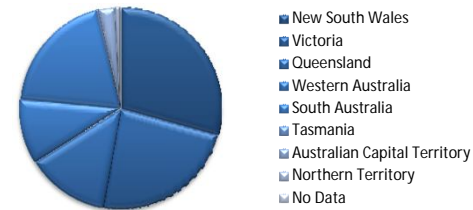
Loan Seasoning Distribution

Seasoning (Months)	Balance	% Balance	Loan Count	% Loan Count
<= 12 Months	180,393,809	70.10%	764	68.58%
12 Months > and <= 18 Months	46,273,742	17.98%	208	18.67%
18 Months > and <= 24 Months	22,493,518	8.74%	114	10.23%
24 Months > and <= 30 Months	6,953,953	2.70%	24	2.15%
30 Months > and <= 36 Months	0	0.00%	0	0.00%
36 Months > and <= 42 Months	0	0.00%	0	0.00%
42 Months > and <= 48 Months	0	0.00%	0	0.00%
48 Months > and <= 54 Months	0	0.00%	0	0.00%
54 Months > and <= 60 Months	181,870	0.07%	1	0.09%
60 Months > and <= 66 Months	0	0.00%	0	0.00%
66 Months > and <= 72 Months	1,035,440	0.40%	3	0.27%
> 72 Months	0	0.00%	0	0.00%
Total	257,332,332	100.00%	1,114	100.00%



Geographic Distribution

Jurisdiction State	Balance	% Balance	Loan Count	% Loan Count
New South Wales	75,406,597	29.30%	288	25.85%
Victoria	60,617,025	23.56%	251	22.53%
Queensland	34,136,935	13.27%	153	13.73%
Western Australia	26,708,140	10.38%	104	9.34%
South Australia	50,339,802	19.56%	275	24.69%
Tasmania	1,282,764	0.50%	8	0.72%
Australian Capital Territory	6,612,218	2.57%	25	2.24%
Northern Territory	2,228,852	0.87%	10	0.90%
No Data	0	0.00%	0	0.00%
Total	257,332,332	100.00%	1,114	100.00%



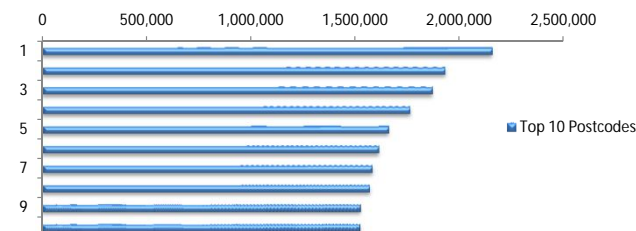
Locality

S&P Category	Balance	% Balance	Loan Count	% Loan Count
Metro	203,609,943	79.12%	855	76.75%
Non Metro	48,785,156	18.96%	240	21.54%
Inner City	4,937,233	1.92%	19	1.71%
Total	257,332,332	100.00%	1,114	100.00%



Top 10 Postcodes

Postcode	Balance	% Balance	Loan Count	% Loan Count
5108	2,156,405	0.84%	15	1.35%
5162	1,931,922	0.75%	11	0.99%
2444	1,870,264	0.73%	7	0.63%
3216	1,764,420	0.69%	7	0.63%
5114	1,661,083	0.65%	11	0.99%
2155	1,612,610	0.63%	5	0.45%
2602	1,581,892	0.61%	6	0.54%
5092	1,570,952	0.61%	12	1.08%
3132	1,524,973	0.59%	4	0.36%
3141	1,523,286	0.59%	4	0.36%
Total	17,197,808	6.68%	82	7.36%



Documentation

Document Type	Balance	% Balance	Loan Count	% Loan Count
Full Doc	257,332,332	100.00%	1,114	100.00%
Low Doc	0	0.00%	0	0.00%
No Doc	0	0.00%	0	0.00%
Total	257,332,332	100.00%	1,114	100.00%



Rate Type

Rate Type	Balance	% Balance	Loan Count	% Loan Count
Variable Rate	257,332,332	100.00%	1,114	100.00%
Fixed Rate	0	0.00%	0	0.00%
Total	257,332,332	100.00%	1,114	100.00%



Repayment Type

Repayment Type	Balance	% Balance	Loan Count	% Loan Count
Principal & Interest	203,028,203	78.90%	868	77.92%
Interest Only	53,196,906	20.67%	227	20.38%
Non-Billing	1,107,223	0.43%	19	1.71%
Total	257,332,332	100.00%	1,114	100.00%



Loan Type

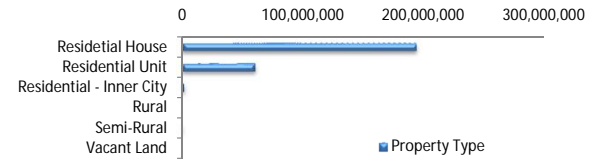
Product Category	Balance	% Balance	Loan Count	% Loan Count
Line of Credit	1,107,223	0.43%	19	1.71%
Term Loan	256,225,109	99.57%	1,095	98.29%
Total	257,332,332	100.00%	1,114	100.00%



■ Line of Credit
■ Term Loan

Property Type

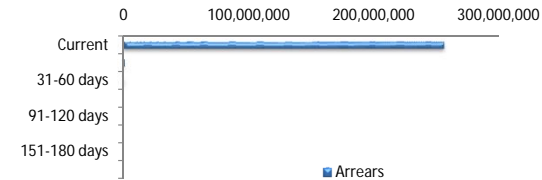
Property Type	Balance	% Balance	Loan Count	% Loan Count
Residential House	194,518,814	75.59%	858	77.02%
Residential Unit	60,740,667	23.60%	251	22.53%
Residential - Inner City	1,738,255	0.68%	4	0.36%
Rural	0	0.00%	0	0.00%
Semi-Rural	334,596	0.13%	1	0.09%
Vacant Land	0	0.00%	0	0.00%
Total	257,332,332	100.00%	1,114	100.00%



■ Property Type

Arrears

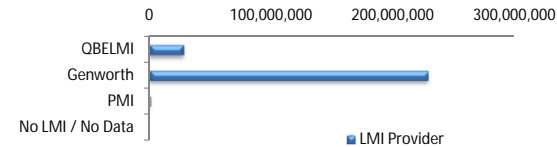
Arrears Band	Balance	% Balance	Loan Count	% Loan Count
Current	255,976,127	99.47%	1,108	99.46%
1-30 days	923,623	0.36%	4	0.36%
31-60 days	432,582	0.17%	2	0.18%
61-90 days	0	0.00%	0	0.00%
91-120 days	0	0.00%	0	0.00%
121-150 days	0	0.00%	0	0.00%
151-180 days	0	0.00%	0	0.00%
181 days or more	0	0.00%	0	0.00%
Total	257,332,332	100.00%	1,114	100.00%



■ Arrears

LMI Provider

LMI Provider	Balance	% Balance	Loan Count	% Loan Count
QBELMI	27,427,903	10.66%	144	12.93%
Genworth	228,868,989	88.94%	967	86.80%
PMI	1,035,440	0.40%	3	0.27%
No LMI / No Data	0	0.00%	0	0.00%
Total	257,332,332	100.00%	1,114	100.00%



■ LMI Provider