

AFG 2013-1 Trust
Collateral Report



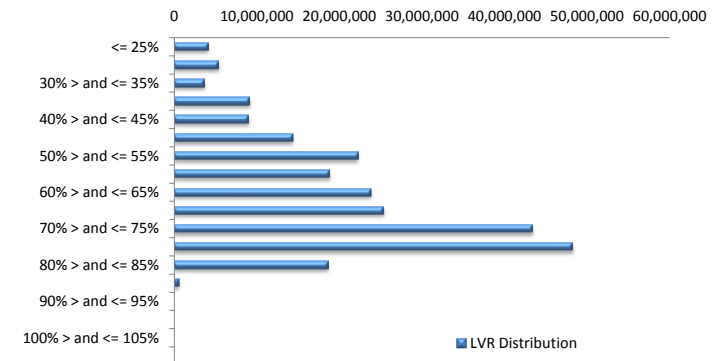
Model Period	6
Collection Period Start	1-Aug-13
Collection Period End	31-Aug-13
No. of Days	31
Interest Period Start	12-Aug-13
Interest Period End	9-Sep-13
No. of Days	29
Determination Date	5-Sep-13
Payment Date	10-Sep-13

Pool Statistics

Closing Balance of Mortgages	246,784,559
Number of Loans	1,084
Average Loan Size	227,661
Largest Loan Size	794,223
Smallest Loan Size	(466)
Weighted Average Interest Rate	4.94%
Weighted Average LVR	63.47%
Weighted Average Seasoning	13.41

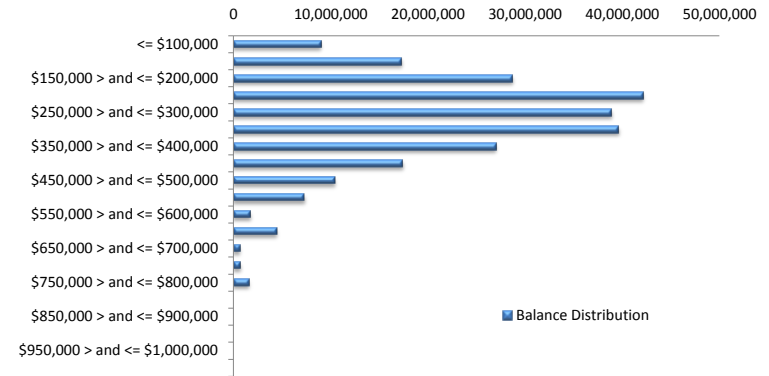
LVR Distribution

Current LTV	Balance	% Balance	Loan Count	% Loan Count
<= 25%	4,121,869	1.67%	44	4.06%
25% > and <= 30%	5,400,969	2.19%	36	3.32%
30% > and <= 35%	3,632,869	1.47%	24	2.21%
35% > and <= 40%	9,154,953	3.71%	55	5.07%
40% > and <= 45%	9,003,356	3.65%	43	3.97%
45% > and <= 50%	14,363,670	5.82%	73	6.73%
50% > and <= 55%	22,249,276	9.02%	89	8.21%
55% > and <= 60%	18,804,758	7.62%	84	7.75%
60% > and <= 65%	23,858,568	9.67%	108	9.96%
65% > and <= 70%	25,334,559	10.27%	106	9.78%
70% > and <= 75%	43,387,422	17.58%	176	16.24%
75% > and <= 80%	48,231,140	19.54%	180	16.61%
80% > and <= 85%	18,653,085	7.56%	64	5.90%
85% > and <= 90%	588,067	0.24%	2	0.18%
90% > and <= 95%	0	0.00%	0	0.00%
95% > and <= 100%	0	0.00%	0	0.00%
100% > and <= 105%	0	0.00%	0	0.00%
> 105%	0	0.00%	0	0.00%
Total	246,784,559	100.00%	1,084	100.00%



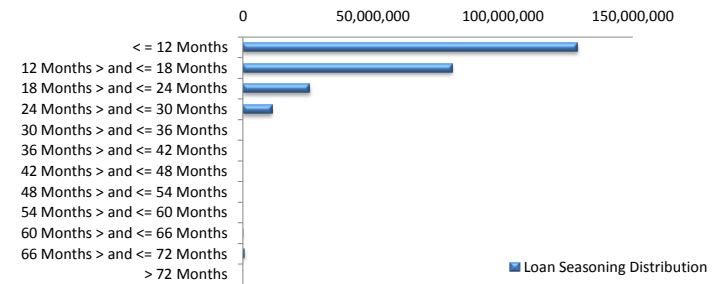
Balance Distribution

Current Balance	Balance	% Balance	Loan Count	% Loan Count
<= \$100,000	8,984,214	3.64%	172	15.87%
\$100,000 > and <= \$150,000	17,258,889	6.99%	136	12.55%
\$150,000 > and <= \$200,000	28,676,770	11.62%	164	15.13%
\$200,000 > and <= \$250,000	42,141,504	17.08%	186	17.16%
\$250,000 > and <= \$300,000	38,897,937	15.76%	141	13.01%
\$300,000 > and <= \$350,000	39,638,013	16.06%	122	11.25%
\$350,000 > and <= \$400,000	26,999,323	10.94%	72	6.64%
\$400,000 > and <= \$450,000	17,409,574	7.05%	41	3.78%
\$450,000 > and <= \$500,000	10,387,191	4.21%	22	2.03%
\$500,000 > and <= \$550,000	7,286,023	2.95%	14	1.29%
\$550,000 > and <= \$600,000	1,737,256	0.70%	3	0.28%
\$600,000 > and <= \$650,000	4,402,620	1.78%	7	0.65%
\$650,000 > and <= \$700,000	666,924	0.27%	1	0.09%
\$700,000 > and <= \$750,000	728,698	0.30%	1	0.09%
\$750,000 > and <= \$800,000	1,569,623	0.64%	2	0.18%
\$800,000 > and <= \$850,000	0	0.00%	0	0.00%
\$850,000 > and <= \$900,000	0	0.00%	0	0.00%
\$900,000 > and <= \$950,000	0	0.00%	0	0.00%
\$950,000 > and <= \$1,000,000	0	0.00%	0	0.00%
> \$1,000,000	0	0.00%	0	0.00%
Total	246,784,559	100.00%	1,084	100.00%



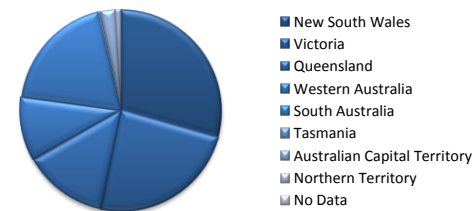
Loan Seasoning Distribution

Seasoning (Months)	Balance	% Balance	Loan Count	% Loan Count
<= 12 Months	128,616,256	52.12%	552	50.92%
12 Months > and <= 18 Months	80,420,494	32.59%	352	32.47%
18 Months > and <= 24 Months	25,588,549	10.37%	132	12.18%
24 Months > and <= 30 Months	11,237,026	4.55%	45	4.15%
30 Months > and <= 36 Months	0	0.00%	0	0.00%
36 Months > and <= 42 Months	0	0.00%	0	0.00%
42 Months > and <= 48 Months	0	0.00%	0	0.00%
48 Months > and <= 54 Months	0	0.00%	0	0.00%
54 Months > and <= 60 Months	0	0.00%	0	0.00%
60 Months > and <= 66 Months	182,282	0.07%	1	0.09%
66 Months > and <= 72 Months	739,951	0.30%	2	0.18%
> 72 Months	0	0.00%	0	0.00%
Total	246,784,559	100.00%	1,084	100.00%



Geographic Distribution

Jurisdiction State	Balance	% Balance	Loan Count	% Loan Count
New South Wales	72,533,513	29.39%	281	25.92%
Victoria	58,949,436	23.89%	248	22.88%
Queensland	33,234,197	13.47%	151	13.93%
Western Australia	25,656,211	10.40%	101	9.32%
South Australia	47,280,169	19.16%	263	24.26%
Tasmania	1,204,060	0.49%	7	0.65%
Australian Capital Territory	5,747,769	2.33%	23	2.12%
Northern Territory	2,179,204	0.88%	10	0.92%
No Data	0	0.00%	0	0.00%
Total	246,784,559	100.00%	1,084	100.00%



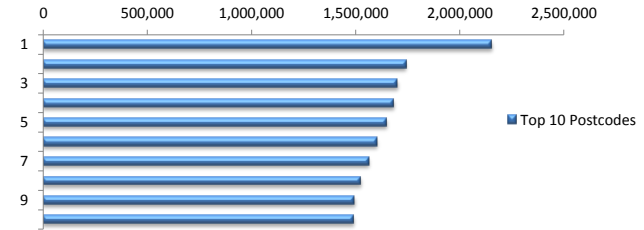
Locality

S&P Category	Balance	% Balance	Loan Count	% Loan Count
Metro	194,819,530	78.94%	831	76.66%
Non Metro	47,078,394	19.08%	234	21.59%
Inner City	4,886,635	1.98%	19	1.75%
Total	246,784,559	100.00%	1,084	100.00%



Top 10 Postcodes

Postcode	Balance	% Balance	Loan Count	% Loan Count
5108	2,151,441	0.87%	15	1.38%
3216	1,741,477	0.71%	7	0.65%
5162	1,699,900	0.69%	10	0.92%
2444	1,682,101	0.68%	6	0.55%
5114	1,646,128	0.67%	11	1.01%
2155	1,601,256	0.65%	5	0.46%
2602	1,563,654	0.63%	6	0.55%
3141	1,522,857	0.62%	4	0.37%
5109	1,494,112	0.61%	5	0.46%
3132	1,489,592	0.60%	4	0.37%
Total	16,592,517	6.72%	73	6.73%



Documentation

Document Type	Balance	% Balance	Loan Count	% Loan Count
Full Doc	246,784,559	100.00%	1,084	100.00%
Low Doc	0	0.00%	0	0.00%
No Doc	0	0.00%	0	0.00%
Total	246,784,559	100.00%	1,084	100.00%



Rate Type

Rate Type	Balance	% Balance	Loan Count	% Loan Count
Variable Rate	246,784,559	100.00%	1,084	100.00%
Fixed Rate	0	0.00%	0	0.00%
Total	246,784,559	100.00%	1,084	100.00%



Repayment Type

Repayment Type	Balance	% Balance	Loan Count	% Loan Count
Principal & Interest	195,062,745	79.04%	845	77.95%
Interest Only	50,615,604	20.51%	220	20.30%
Non-Billing	1,106,211	0.45%	19	1.75%
Total	246,784,559	100.00%	1,084	100.00%



Loan Type

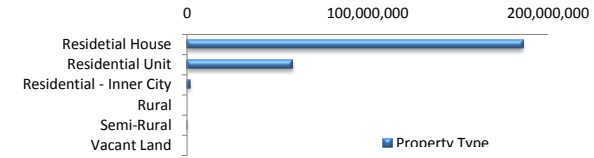
Product Category	Balance	% Balance	Loan Count	% Loan Count
Line of Credit	1,106,211	0.45%	19	1.75%
Term Loan	245,678,349	99.55%	1,065	98.25%
Total	246,784,559	100.00%	1,084	100.00%



■ Line of Credit
■ Term Loan

Property Type

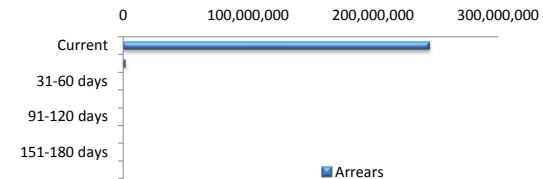
Property Type	Balance	% Balance	Loan Count	% Loan Count
Residential House	186,089,205	75.41%	834	76.94%
Residential Unit	58,638,148	23.76%	245	22.60%
Residential - Inner City	1,730,319	0.70%	4	0.37%
Rural	0	0.00%	0	0.00%
Semi-Rural	326,888	0.13%	1	0.09%
Vacant Land	0	0.00%	0	0.00%
Total	246,784,559	100.00%	1,084	100.00%



■ Property Type

Arrears

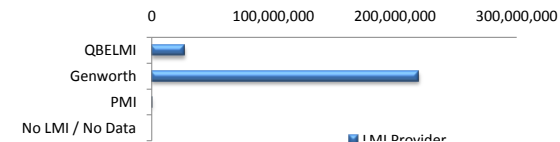
Arrears Band	Balance	% Balance	Loan Count	% Loan Count
Current	244,966,899	99.26%	1,076	99.26%
1-30 days	1,817,660	0.74%	8	0.74%
31-60 days	0	0.00%	0	0.00%
61-90 days	0	0.00%	0	0.00%
91-120 days	0	0.00%	0	0.00%
121-150 days	0	0.00%	0	0.00%
151-180 days	0	0.00%	0	0.00%
181 days or more	0	0.00%	0	0.00%
Total	246,784,559	100.00%	1,084	100.00%



■ Arrears

LMI Provider

LMI Provider	Balance	% Balance	Loan Count	% Loan Count
QBELMI	26,666,413	10.81%	141	13.01%
Genworth	219,378,194	88.89%	941	86.81%
PMI	739,951	0.30%	2	0.18%
No LMI / No Data	0	0.00%	0	0.00%
Total	246,784,559	100.00%	1,084	100.00%



■ LMI Provider

Property Occupancy

Property Occupancy	Balance	% Balance	Loan Count	% Loan Count
Investment	58,952,687	23.89%	241	22.23%
Owner Occupier	187,831,872	76.11%	843	77.77%
Total	246,784,559	100.00%	1,084	100.00%



■ Investment
■ Owner Occupier

Default Statistics

Default Data	Amount	No. of Loans
Defaulted Loans	0.00	0.00
Loss on Sale	0.00	0.00
Claims on LMI	0.00	0.00
Claims paid by LMI	0.00	0.00
Claims Denied/Reduced	0.00	0.00
Loss covered by Excess Spread	0.00	N/A

