

**AFG 2013-1 Trust**  
**Collateral Report**



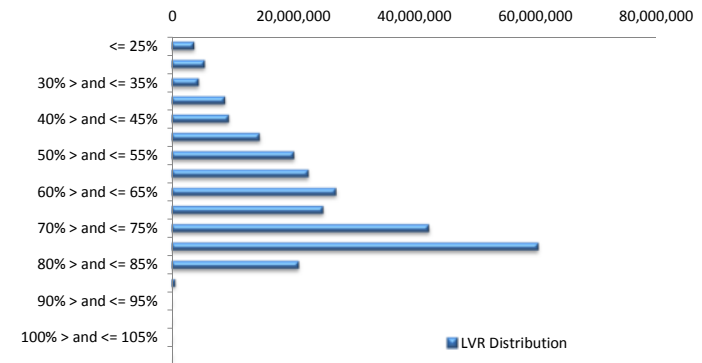
Model Period	2
Collection Period Start	01-Apr-13
Collection Period End	30-Apr-13
No. of Days	30
Interest Period Start	10-Apr-13
Interest Period End	09-May-13
No. of Days	30
Determination Date	07-May-13
Payment Date	10-May-13

**Pool Statistics**

Closing Balance of Mortgages	265,883,547
Number of Loans	1,136
Average Loan Size	234,052
Largest Loan Size	797,622
Smallest Loan Size	0
Weighted Average Interest Rate	5.44%
Weighted Average LVR	64.28%
Weighted Average Seasoning	9.38

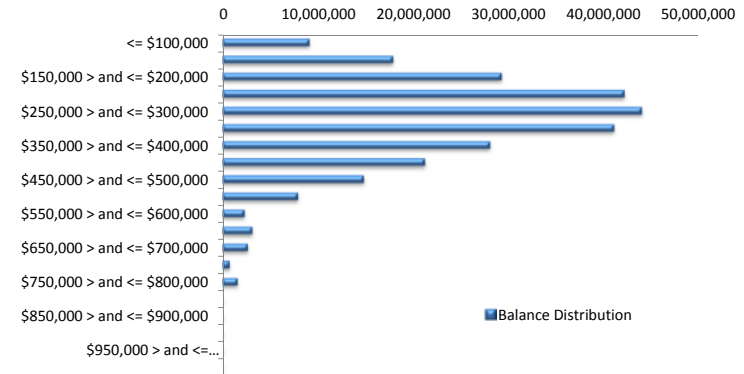
**LVR Distribution**

Current LTV	Balance	% Balance	Loan Count	% Loan Count
<= 25%	3,733,972	1.40%	36	3.17%
25% > and <= 30%	5,500,659	2.07%	37	3.26%
30% > and <= 35%	4,479,401	1.68%	28	2.46%
35% > and <= 40%	8,833,695	3.32%	51	4.49%
40% > and <= 45%	9,437,482	3.55%	47	4.14%
45% > and <= 50%	14,521,494	5.46%	72	6.34%
50% > and <= 55%	20,217,797	7.60%	78	6.87%
55% > and <= 60%	22,557,063	8.48%	99	8.71%
60% > and <= 65%	27,132,645	10.20%	113	9.95%
65% > and <= 70%	25,017,893	9.41%	110	9.68%
70% > and <= 75%	42,436,374	15.96%	172	15.14%
75% > and <= 80%	60,458,079	22.74%	217	19.10%
80% > and <= 85%	20,969,245	7.89%	74	6.51%
85% > and <= 90%	587,747	0.22%	2	0.18%
90% > and <= 95%	0	0.00%	0	0.00%
95% > and <= 100%	0	0.00%	0	0.00%
100% > and <= 105%	0	0.00%	0	0.00%
> 105%	0	0.00%	0	0.00%
<b>Total</b>	<b>265,883,547</b>	<b>100.00%</b>	<b>1,136</b>	<b>100.00%</b>



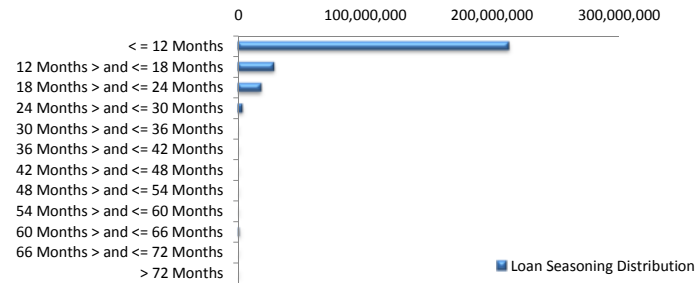
### Balance Distribution

Current Balance	Balance	% Balance	Loan Count	% Loan Count
<= \$100,000	9,104,094	3.42%	168	14.79%
\$100,000 > and <= \$150,000	17,888,262	6.73%	140	12.32%
\$150,000 > and <= \$200,000	29,281,818	11.01%	167	14.70%
\$200,000 > and <= \$250,000	42,165,907	15.86%	187	16.46%
\$250,000 > and <= \$300,000	43,978,400	16.54%	160	14.08%
\$300,000 > and <= \$350,000	41,093,413	15.46%	127	11.18%
\$350,000 > and <= \$400,000	28,069,802	10.56%	75	6.60%
\$400,000 > and <= \$450,000	21,216,244	7.98%	50	4.40%
\$450,000 > and <= \$500,000	14,817,326	5.57%	31	2.73%
\$500,000 > and <= \$550,000	7,894,510	2.97%	15	1.32%
\$550,000 > and <= \$600,000	2,293,582	0.86%	4	0.35%
\$600,000 > and <= \$650,000	3,121,950	1.17%	5	0.44%
\$650,000 > and <= \$700,000	2,656,090	1.00%	4	0.35%
\$700,000 > and <= \$750,000	729,031	0.27%	1	0.09%
\$750,000 > and <= \$800,000	1,573,119	0.59%	2	0.18%
\$800,000 > and <= \$850,000	0	0.00%	0	0.00%
\$850,000 > and <= \$900,000	0	0.00%	0	0.00%
\$900,000 > and <= \$950,000	0	0.00%	0	0.00%
\$950,000 > and <= \$1,000,000	0	0.00%	0	0.00%
> \$1,000,000	0	0.00%	0	0.00%
<b>Total</b>	<b>265,883,547</b>	<b>100.00%</b>	<b>1,136</b>	<b>100.00%</b>



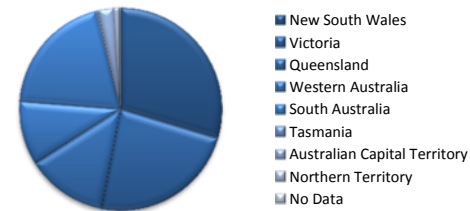
### Loan Seasoning Distribution

Seasoning (Months)	Balance	% Balance	Loan Count	% Loan Count
<= 12 Months	213,615,965	80.34%	895	78.79%
12 Months > and <= 18 Months	28,671,374	10.78%	142	12.50%
18 Months > and <= 24 Months	18,568,015	6.98%	82	7.22%
24 Months > and <= 30 Months	3,810,342	1.43%	13	1.14%
30 Months > and <= 36 Months	0	0.00%	0	0.00%
36 Months > and <= 42 Months	0	0.00%	0	0.00%
42 Months > and <= 48 Months	0	0.00%	0	0.00%
48 Months > and <= 54 Months	0	0.00%	0	0.00%
54 Months > and <= 60 Months	181,908	0.07%	1	0.09%
60 Months > and <= 66 Months	1,035,943	0.39%	3	0.26%
66 Months > and <= 72 Months	0	0.00%	0	0.00%
> 72 Months	0	0.00%	0	0.00%
<b>Total</b>	<b>265,883,547</b>	<b>100.00%</b>	<b>1,136</b>	<b>100.00%</b>



### Geographic Distribution

Jurisdiction State	Balance	% Balance	Loan Count	% Loan Count
New South Wales	78,824,625	29.65%	294	25.88%
Victoria	62,269,631	23.42%	254	22.36%
Queensland	34,327,014	12.91%	153	13.47%
Western Australia	27,266,813	10.26%	107	9.42%
South Australia	52,636,345	19.80%	284	25.00%
Tasmania	1,285,290	0.48%	8	0.70%
Australian Capital Territory	6,626,636	2.49%	25	2.20%
Northern Territory	2,647,192	1.00%	11	0.97%
No Data	0	0.00%	0	0.00%
<b>Total</b>	<b>265,883,547</b>	<b>100.00%</b>	<b>1,136</b>	<b>100.00%</b>



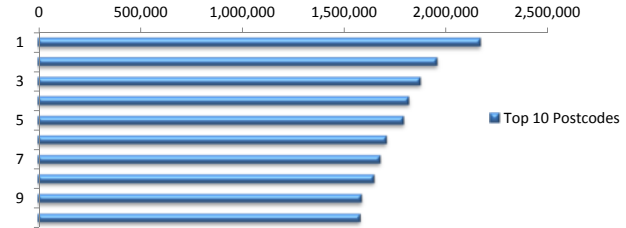
### Locality

S&P Category	Balance	% Balance	Loan Count	% Loan Count
Metro	210,468,460	79.16%	873	76.85%
Non Metro	50,058,033	18.83%	243	21.39%
Inner City	5,357,055	2.01%	20	1.76%
<b>Total</b>	<b>265,883,547</b>	<b>100.00%</b>	<b>1,136</b>	<b>100.00%</b>



### Top 10 Postcodes

Postcode	Balance	% Balance	Loan Count	% Loan Count
5108	2,166,949	0.81%	15	1.32%
5162	1,954,336	0.74%	11	0.97%
2444	1,872,409	0.70%	7	0.62%
5126	1,815,773	0.68%	11	0.97%
3216	1,790,972	0.67%	7	0.62%
5109	1,706,329	0.64%	6	0.53%
5114	1,676,357	0.63%	11	0.97%
2155	1,644,959	0.62%	5	0.44%
2602	1,584,926	0.60%	6	0.53%
5092	1,578,085	0.59%	12	1.06%
<b>Total</b>	<b>17,791,095</b>	<b>6.69%</b>	<b>91</b>	<b>8.01%</b>



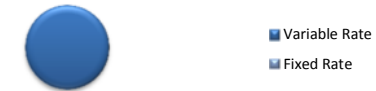
### Documentation

Document Type	Balance	% Balance	Loan Count	% Loan Count
Full Doc	265,883,547	100.00%	1,136	100.00%
Low Doc	0	0.00%	0	0.00%
No Doc	0	0.00%	0	0.00%
<b>Total</b>	<b>265,883,547</b>	<b>100.00%</b>	<b>1,136</b>	<b>100.00%</b>



### Rate Type

Rate Type	Balance	% Balance	Loan Count	% Loan Count
Variable Rate	265,883,547	100.00%	1,136	100.00%
Fixed Rate	0	0.00%	0	0.00%
<b>Total</b>	<b>265,883,547</b>	<b>100.00%</b>	<b>1,136</b>	<b>100.00%</b>



### Repayment Type

Repayment Type	Balance	% Balance	Loan Count	% Loan Count
Principal & Interest	210,417,614	79.14%	886	77.99%
Interest Only	54,347,703	20.44%	231	20.33%
Non-Billing	1,118,231	0.42%	19	1.67%
<b>Total</b>	<b>265,883,547</b>	<b>100.00%</b>	<b>1,136</b>	<b>100.00%</b>



### Loan Type

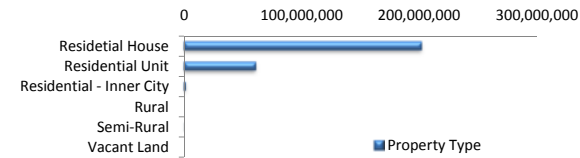
Product Category	Balance	% Balance	Loan Count	% Loan Count
Line of Credit	1,118,231	0.42%	19	1.67%
Term Loan	264,765,316	99.58%	1,117	98.33%
<b>Total</b>	<b>265,883,547</b>	<b>100.00%</b>	<b>1,136</b>	<b>100.00%</b>



■ Line of Credit  
■ Term Loan

### Property Type

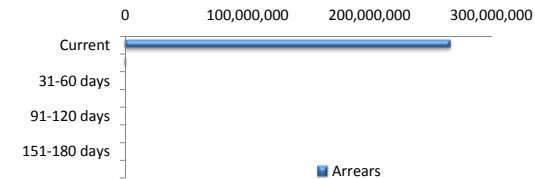
Property Type	Balance	% Balance	Loan Count	% Loan Count
Residential House	202,086,863	76.01%	879	77.38%
Residential Unit	61,465,881	23.12%	251	22.10%
Residential - Inner City	1,988,080	0.75%	5	0.44%
Rural	0	0.00%	0	0.00%
Semi-Rural	342,722	0.13%	1	0.09%
Vacant Land	0	0.00%	0	0.00%
<b>Total</b>	<b>265,883,547</b>	<b>100.00%</b>	<b>1,136</b>	<b>100.00%</b>



■ Property Type

### Arrears

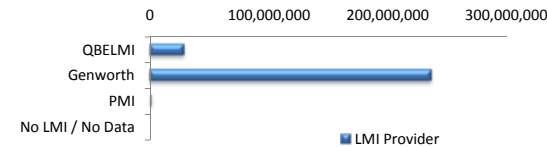
Arrears Band	Balance	% Balance	Loan Count	% Loan Count
Current	264,971,283	99.66%	1,132	99.65%
1-30 days	912,264	0.34%	4	0.35%
31-60 days	0	0.00%	0	0.00%
61-90 days	0	0.00%	0	0.00%
91-120 days	0	0.00%	0	0.00%
121-150 days	0	0.00%	0	0.00%
151-180 days	0	0.00%	0	0.00%
181 days or more	0	0.00%	0	0.00%
<b>Total</b>	<b>265,883,547</b>	<b>100.00%</b>	<b>1,136</b>	<b>100.00%</b>



■ Arrears

### LMI Provider

LMI Provider	Balance	% Balance	Loan Count	% Loan Count
QBELMI	28,266,811	10.63%	146	12.85%
Genworth	236,580,793	88.98%	987	86.88%
PMI	1,035,943	0.39%	3	0.26%
No LMI / No Data	0	0.00%	0	0.00%
<b>Total</b>	<b>265,883,547</b>	<b>100.00%</b>	<b>1,136</b>	<b>100.00%</b>



■ LMI Provider