

**AFG Series 2014-1
Collateral Report**



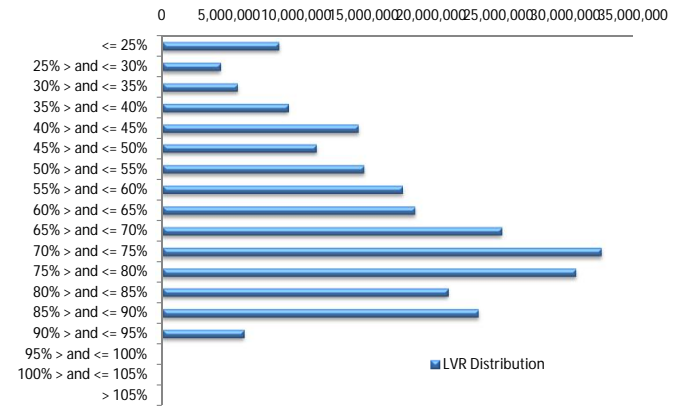
Model Period	8
Collection Period Start	01-Dec-14
Collection Period End	31-Dec-14
No. of Days	31
Interest Period Start	15-Dec-14
Interest Period End	13-Jan-15
No. of Days	30
Determination Date	09-Jan-15
Payment Date	14-Jan-15

Pool Statistics

Closing Balance of Mortgages	244,926,420
No. of Loans (Unconsolidated)	1,072
No. of Loans (Consolidated)	821
Average Loan Size (Unconsolidated)	228,476
Average Loan Size (Consolidated)	298,327
Largest Loan Size (Unconsolidated)	999,613
Largest Loan Size (Consolidated)	999,613
Smallest Loan Size (Unconsolidated)	(3,733)
Smallest Loan Size (Consolidated)	(3,733)
Weighted Average Interest Rate	4.89%
Weighted Average LVR	64.43%
Weighted Average Seasoning	21.26

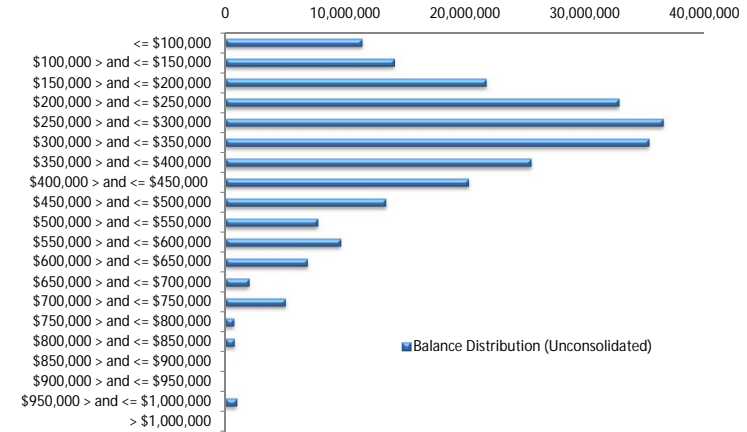
LVR Distribution

Current LTV	Balance	% Balance	Loan Count (Consol.)	% Loan Count
<= 25%	8,664,471	3.54%	93	11.33%
25% > and <= 30%	4,344,757	1.77%	26	3.17%
30% > and <= 35%	5,614,715	2.29%	28	3.41%
35% > and <= 40%	9,371,338	3.83%	43	5.24%
40% > and <= 45%	14,540,407	5.94%	50	6.09%
45% > and <= 50%	11,470,495	4.68%	40	4.87%
50% > and <= 55%	14,997,820	6.12%	45	5.48%
55% > and <= 60%	17,856,121	7.29%	55	6.70%
60% > and <= 65%	18,792,533	7.67%	56	6.82%
65% > and <= 70%	25,207,199	10.29%	69	8.40%
70% > and <= 75%	32,587,252	13.30%	87	10.60%
75% > and <= 80%	30,699,379	12.53%	84	10.23%
80% > and <= 85%	21,220,488	8.66%	64	7.80%
85% > and <= 90%	23,475,640	9.58%	66	8.04%
90% > and <= 95%	6,083,805	2.48%	15	1.83%
95% > and <= 100%	0	0.00%	0	0.00%
100% > and <= 105%	0	0.00%	0	0.00%
> 105%	0	0.00%	0	0.00%
Total	244,926,420	100.00%	821	100.00%



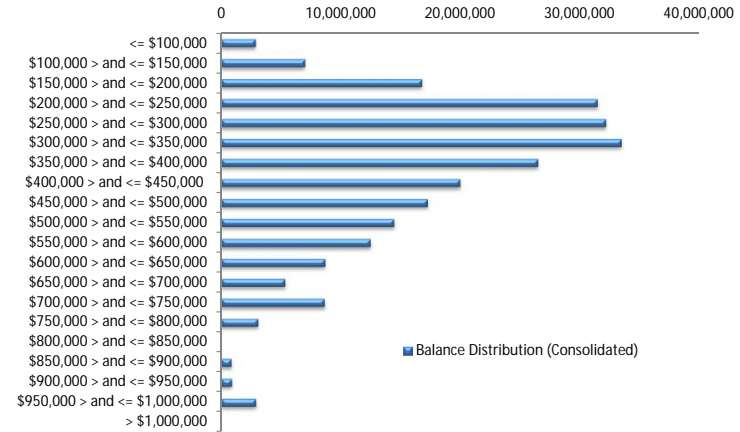
Balance Distribution (Unconsolidated)

Current Balance	Balance	% Balance	Loan Count	% Loan Count
<= \$100,000	11,419,786	4.66%	247	23.04%
\$100,000 > and <= \$150,000	14,110,825	5.76%	113	10.54%
\$150,000 > and <= \$200,000	21,766,134	8.89%	124	11.57%
\$200,000 > and <= \$250,000	32,789,468	13.39%	146	13.62%
\$250,000 > and <= \$300,000	36,476,268	14.89%	133	12.41%
\$300,000 > and <= \$350,000	35,294,685	14.41%	109	10.17%
\$350,000 > and <= \$400,000	25,481,628	10.40%	68	6.34%
\$400,000 > and <= \$450,000	20,310,626	8.29%	48	4.48%
\$450,000 > and <= \$500,000	13,396,399	5.47%	28	2.61%
\$500,000 > and <= \$550,000	7,734,349	3.16%	15	1.40%
\$550,000 > and <= \$600,000	9,641,690	3.94%	17	1.59%
\$600,000 > and <= \$650,000	6,880,313	2.81%	11	1.03%
\$650,000 > and <= \$700,000	2,014,335	0.82%	3	0.28%
\$700,000 > and <= \$750,000	5,057,486	2.06%	7	0.65%
\$750,000 > and <= \$800,000	752,079	0.31%	1	0.09%
\$800,000 > and <= \$850,000	800,737	0.33%	1	0.09%
\$850,000 > and <= \$900,000	0	0.00%	0	0.00%
\$900,000 > and <= \$950,000	0	0.00%	0	0.00%
\$950,000 > and <= \$1,000,000	999,613	0.41%	1	0.09%
> \$1,000,000	0	0.00%	0	0.00%
Total	244,926,420	100.00%	1,072	100.00%



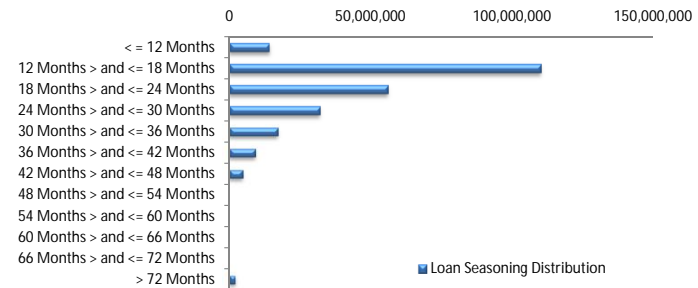
Balance Distribution (Consolidated)

Current Balance	Balance	% Balance	Loan Count	% Loan Count
<= \$100,000	2,908,690	1.19%	63	7.67%
\$100,000 > and <= \$150,000	7,025,121	2.87%	55	6.70%
\$150,000 > and <= \$200,000	16,788,045	6.85%	95	11.57%
\$200,000 > and <= \$250,000	31,442,939	12.84%	141	17.17%
\$250,000 > and <= \$300,000	32,136,860	13.12%	117	14.25%
\$300,000 > and <= \$350,000	33,441,251	13.65%	103	12.55%
\$350,000 > and <= \$400,000	26,479,242	10.81%	71	8.65%
\$400,000 > and <= \$450,000	19,968,176	8.15%	47	5.72%
\$450,000 > and <= \$500,000	17,265,962	7.05%	36	4.38%
\$500,000 > and <= \$550,000	14,454,666	5.90%	28	3.41%
\$550,000 > and <= \$600,000	12,484,615	5.10%	22	2.68%
\$600,000 > and <= \$650,000	8,713,108	3.56%	14	1.71%
\$650,000 > and <= \$700,000	5,358,403	2.19%	8	0.97%
\$700,000 > and <= \$750,000	8,646,629	3.53%	12	1.46%
\$750,000 > and <= \$800,000	3,106,983	1.27%	4	0.49%
\$800,000 > and <= \$850,000	0	0.00%	0	0.00%
\$850,000 > and <= \$900,000	869,855	0.36%	1	0.12%
\$900,000 > and <= \$950,000	917,185	0.37%	1	0.12%
\$950,000 > and <= \$1,000,000	2,918,691	1.19%	3	0.37%
> \$1,000,000	0	0.00%	0	0.00%
Total	244,926,420	100.00%	821	100.00%



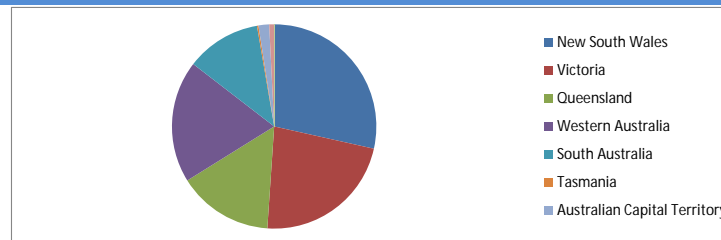
Loan Seasoning Distribution

Seasoning (Months)	Balance	% Balance	Loan Count	% Loan Count
<= 12 Months	13,953,860	5.70%	69	6.44%
12 Months > and <= 18 Months	110,038,725	44.93%	450	41.98%
18 Months > and <= 24 Months	56,056,934	22.89%	251	23.41%
24 Months > and <= 30 Months	31,870,247	13.01%	149	13.90%
30 Months > and <= 36 Months	16,935,728	6.91%	74	6.90%
36 Months > and <= 42 Months	9,093,808	3.71%	52	4.85%
42 Months > and <= 48 Months	4,777,595	1.95%	18	1.68%
48 Months > and <= 54 Months	0	0.00%	0	0.00%
54 Months > and <= 60 Months	0	0.00%	0	0.00%
60 Months > and <= 66 Months	0	0.00%	0	0.00%
66 Months > and <= 72 Months	0	0.00%	0	0.00%
> 72 Months	2,199,524	0.90%	9	0.84%
Total	244,926,420	100.00%	1,072	100.00%



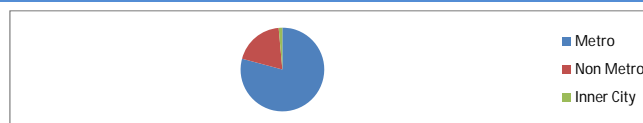
Geographic Distribution

Jurisdiction State	Balance	% Balance	Loan Count (Consol.)	% Loan Count
New South Wales	69,766,262	28.48%	230	28.01%
Victoria	55,317,946	22.59%	184	22.41%
Queensland	36,945,594	15.08%	127	15.47%
Western Australia	47,243,174	19.29%	146	17.78%
South Australia	29,048,420	11.86%	112	13.64%
Tasmania	556,519	0.23%	2	0.24%
Australian Capital Territory	4,143,985	1.69%	14	1.71%
Northern Territory	1,904,519	0.78%	6	0.73%
No Data	0	0.00%	0	0.00%
Total	244,926,420	100.00%	821	100.00%



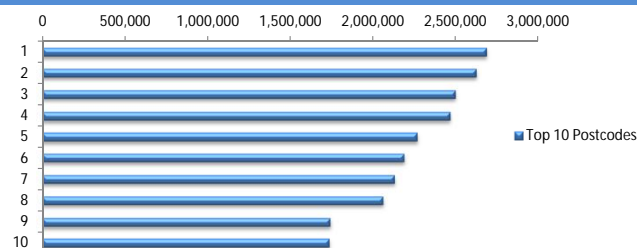
Locality

S&P Category	Balance	% Balance	Loan Count (Consol.)	% Loan Count
Metro	193,898,591	79.17%	652	79.42%
Non Metro	47,549,970	19.41%	159	19.37%
Inner City	3,477,859	1.42%	10	1.22%
Total	244,926,420	100.00%	821	100.00%



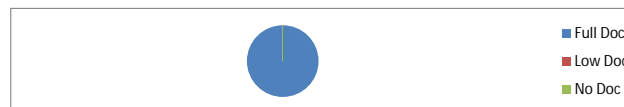
Top 10 Postcodes

Postcode	Balance	% Balance	Loan Count (Consol.)	% Loan Count
4300	2,684,803	1.10%	12	1.12%
6164	2,624,994	1.07%	8	0.75%
6330	2,499,151	1.02%	8	0.75%
6210	2,467,739	1.01%	7	0.65%
3058	2,268,253	0.93%	4	0.37%
6027	2,187,421	0.89%	5	0.47%
6030	2,129,964	0.87%	5	0.47%
6155	2,060,090	0.84%	6	0.56%
4509	1,741,310	0.71%	4	0.37%
6056	1,732,238	0.71%	5	0.47%
Total	22,395,962	9.14%	64	5.97%



Documentation

Document Type	Balance	% Balance	Loan Count	% Loan Count
Full Doc	244,926,420	100.00%	1,072	100.00%
Low Doc	0	0.00%	0	0.00%
No Doc	0	0.00%	0	0.00%
Total	244,926,420	100.00%	1,072	100.00%



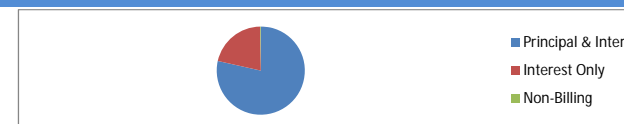
Rate Type

Rate Type	Balance	% Balance	Loan Count	% Loan Count
Variable Rate	244,926,420	100.00%	1,072	100.00%
Fixed Rate	0	0.00%	0	0.00%
Total	244,926,420	100.00%	1,072	100.00%



Repayment Type

Repayment Type	Balance	% Balance	Loan Count	% Loan Count
Principal & Interest	192,363,415	78.54%	821	76.59%
Interest Only	51,956,571	21.21%	244	22.76%
Non-Billing	606,434	0.25%	7	0.65%
Total	244,926,420	100.00%	1,072	100.00%



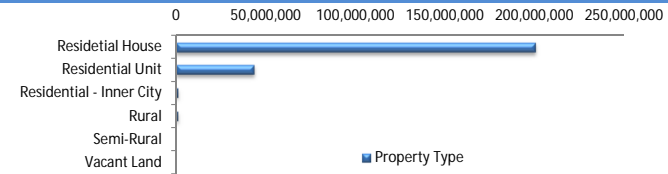
Loan Type

Product Category	Balance	% Balance	Loan Count	% Loan Count
Line of Credit	606,434	0.25%	7	0.65%
Term Loan	244,319,986	99.75%	1,065	99.35%
Total	244,926,420	100.00%	1,072	100.00%



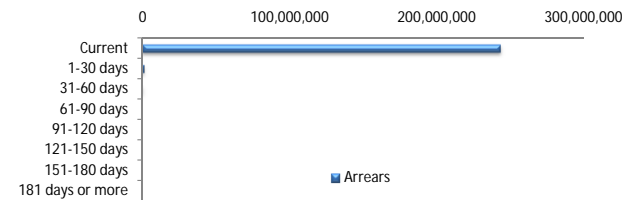
Property Type

Property Type	Balance	% Balance	Loan Count (Consol.)	% Loan Count
Residential House	200,312,518	81.78%	655	79.78%
Residential Unit	42,943,177	17.53%	163	19.85%
Residential - Inner City	876,041	0.36%	2	0.24%
Rural	794,684	0.32%	1	0.12%
Semi-Rural	0	0.00%	0	0.00%
Vacant Land	0	0.00%	0	0.00%
Total	244,926,420	100.00%	821	100.00%



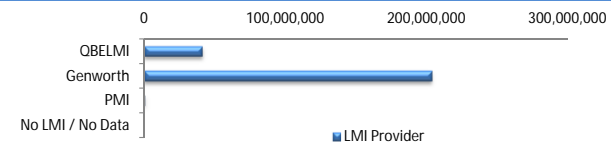
Arrears

Arrears Band	Balance	% Balance	Loan Count	% Loan Count
Current	243,284,157	99.33%	1,066	99.44%
1-30 days	1,307,018	0.53%	5	0.47%
31-60 days	335,245	0.14%	1	0.09%
61-90 days	0	0.00%	0	0.00%
91-120 days	0	0.00%	0	0.00%
121-150 days	0	0.00%	0	0.00%
151-180 days	0	0.00%	0	0.00%
181 days or more	0	0.00%	0	0.00%
Total	244,926,420	100.00%	1,072	100.00%



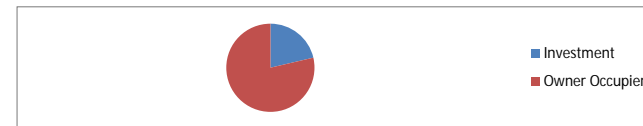
LMI Provider

LMI Provider	Balance	% Balance	Loan Count (Consol.)	% Loan Count
QBELMI	40,826,196	16.67%	129	15.71%
Genworth	203,524,636	83.10%	691	84.17%
PMI	575,588	0.24%	1	0.12%
No LMI / No Data	0	0.00%	0	0.00%
Total	244,926,420	100.00%	821	100.00%



Property Occupancy

Property Occupancy	Balance	% Balance	Loan Count	% Loan Count
Investment	52,316,072	21.36%	216	20.15%
Owner Occupier	192,610,348	78.64%	856	79.85%
Total	244,926,420	100.00%	1,072	100.00%



Default Statistics

Default Data	Amount	No. of Loans
Defaulted Loans	0.00	0.00
Loss on Sale	0.00	0.00
Claims on LMI	0.00	0.00
Claims paid by LMI	0.00	0.00
Claims Denied/Reduced	0.00	0.00
Loss covered by Excess Spread	0.00	N/A