

**AFG Series 2013-2
Collateral Report**



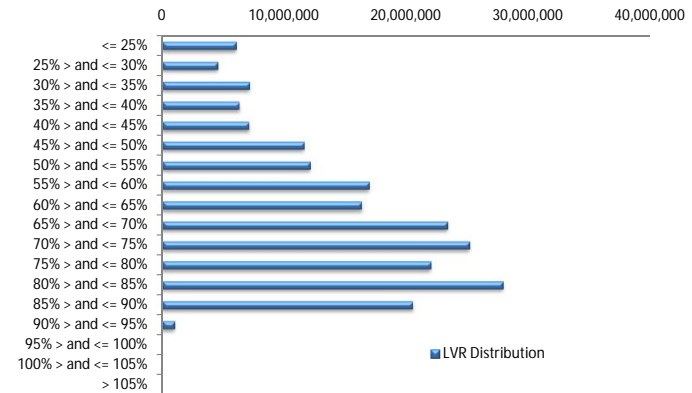
Model Period	14
Collection Period Start	01-Dec-14
Collection Period End	31-Dec-14
No. of Days	31
Interest Period Start	15-Dec-14
Interest Period End	13-Jan-15
No. of Days	30
Determination Date	09-Jan-15
Payment Date	14-Jan-15

Pool Statistics

Closing Balance of Mortgages	208,290,736
No. of Loans (Unconsolidated)	852
No. of Loans (Consolidated)	721
Average Loan Size (Unconsolidated)	244,473
Average Loan Size (Consolidated)	288,891
Largest Loan Size (Unconsolidated)	1,069,865
Largest Loan Size (Consolidated)	1,069,865
Smallest Loan Size (Unconsolidated)	(2,856)
Smallest Loan Size (Consolidated)	(3,006)
Weighted Average Interest Rate	4.90%
Weighted Average LVR	64.70%
Weighted Average Seasoning	24.56

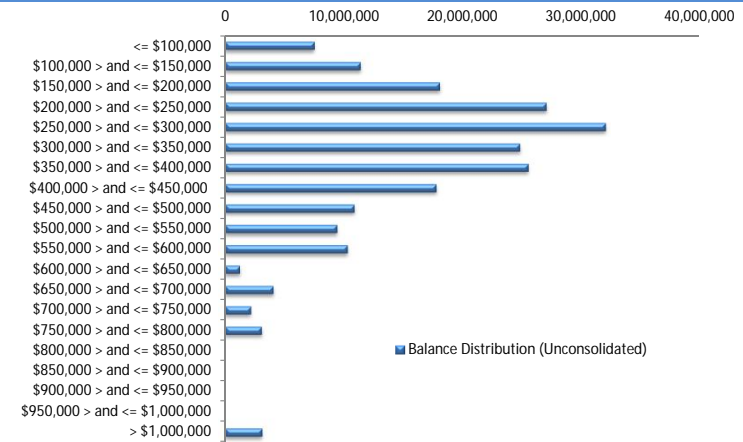
LVR Distribution

Current LTV	Balance	% Balance	Loan Count (Consol.)	% Loan Count
<= 25%	6,077,352	2.92%	75	10.40%
25% > and <= 30%	4,562,043	2.19%	27	3.74%
30% > and <= 35%	7,184,398	3.45%	39	5.41%
35% > and <= 40%	6,349,456	3.05%	30	4.16%
40% > and <= 45%	7,132,092	3.42%	33	4.58%
45% > and <= 50%	11,644,310	5.59%	41	5.69%
50% > and <= 55%	12,127,877	5.82%	40	5.55%
55% > and <= 60%	16,962,624	8.14%	55	7.63%
60% > and <= 65%	16,322,906	7.84%	46	6.38%
65% > and <= 70%	23,347,102	11.21%	64	8.88%
70% > and <= 75%	25,134,831	12.07%	71	9.85%
75% > and <= 80%	21,998,301	10.56%	58	8.04%
80% > and <= 85%	27,878,420	13.38%	78	10.82%
85% > and <= 90%	20,513,815	9.85%	61	8.46%
90% > and <= 95%	1,055,209	0.51%	3	0.42%
95% > and <= 100%	0	0.00%	0	0.00%
100% > and <= 105%	0	0.00%	0	0.00%
> 105%	0	0.00%	0	0.00%
Total	208,290,736	100.00%	721	100.00%



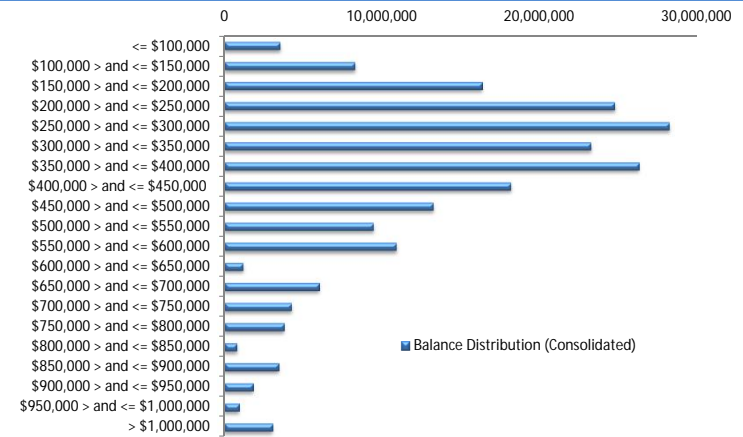
Balance Distribution (Unconsolidated)

Current Balance	Balance	% Balance	Loan Count	% Loan Count
<= \$100,000	7,518,287	3.61%	155	18.19%
\$100,000 > and <= \$150,000	11,400,872	5.47%	91	10.68%
\$150,000 > and <= \$200,000	18,062,928	8.67%	104	12.21%
\$200,000 > and <= \$250,000	27,013,265	12.97%	121	14.20%
\$250,000 > and <= \$300,000	31,985,640	15.36%	117	13.73%
\$300,000 > and <= \$350,000	24,774,429	11.89%	77	9.04%
\$350,000 > and <= \$400,000	25,499,745	12.24%	68	7.98%
\$400,000 > and <= \$450,000	17,764,796	8.53%	42	4.93%
\$450,000 > and <= \$500,000	10,874,269	5.22%	23	2.70%
\$500,000 > and <= \$550,000	9,412,856	4.52%	18	2.11%
\$550,000 > and <= \$600,000	10,305,329	4.95%	18	2.11%
\$600,000 > and <= \$650,000	1,256,171	0.60%	2	0.23%
\$650,000 > and <= \$700,000	4,057,761	1.95%	6	0.70%
\$700,000 > and <= \$750,000	2,172,787	1.04%	3	0.35%
\$750,000 > and <= \$800,000	3,078,071	1.48%	4	0.47%
\$800,000 > and <= \$850,000	0	0.00%	0	0.00%
\$850,000 > and <= \$900,000	0	0.00%	0	0.00%
\$900,000 > and <= \$950,000	0	0.00%	0	0.00%
\$950,000 > and <= \$1,000,000	0	0.00%	0	0.00%
> \$1,000,000	3,113,533	1.49%	3	0.35%
Total	208,290,736	100.00%	852	100.00%



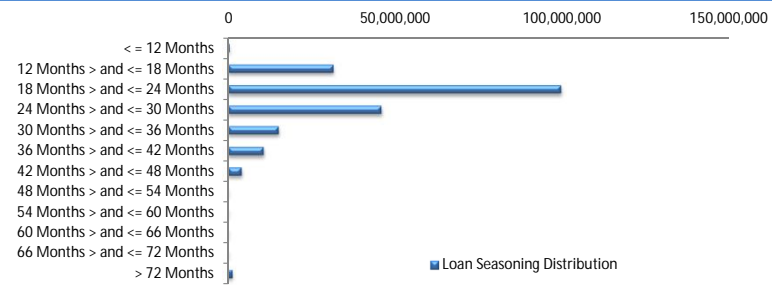
Balance Distribution (Consolidated)

Current Balance	Balance	% Balance	Loan Count (Consol.)	% Loan Count
<= \$100,000	3,566,747	1.71%	65	9.02%
\$100,000 > and <= \$150,000	8,304,248	3.99%	66	9.15%
\$150,000 > and <= \$200,000	16,364,391	7.86%	94	13.04%
\$200,000 > and <= \$250,000	24,742,380	11.88%	110	15.26%
\$250,000 > and <= \$300,000	28,204,406	13.54%	103	14.29%
\$300,000 > and <= \$350,000	23,237,938	11.16%	72	9.99%
\$350,000 > and <= \$400,000	26,293,494	12.62%	70	9.71%
\$400,000 > and <= \$450,000	18,180,153	8.73%	43	5.96%
\$450,000 > and <= \$500,000	13,262,592	6.37%	28	3.88%
\$500,000 > and <= \$550,000	9,490,123	4.56%	18	2.50%
\$550,000 > and <= \$600,000	10,933,135	5.25%	19	2.64%
\$600,000 > and <= \$650,000	1,232,112	0.59%	2	0.28%
\$650,000 > and <= \$700,000	6,058,331	2.91%	9	1.25%
\$700,000 > and <= \$750,000	4,300,069	2.06%	6	0.83%
\$750,000 > and <= \$800,000	3,833,369	1.84%	5	0.69%
\$800,000 > and <= \$850,000	833,091	0.40%	1	0.14%
\$850,000 > and <= \$900,000	3,487,893	1.67%	4	0.55%
\$900,000 > and <= \$950,000	1,867,746	0.90%	2	0.28%
\$950,000 > and <= \$1,000,000	984,986	0.47%	1	0.14%
> \$1,000,000	3,113,533	1.49%	3	0.42%
Total	208,290,736	100.00%	721	100.00%



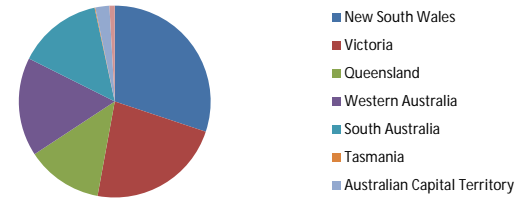
Loan Seasoning Distribution

Seasoning (Months)	Balance	% Balance	Loan Count	% Loan Count
<= 12 Months	399,652	0.19%	2	0.23%
12 Months > and <= 18 Months	31,466,588	15.11%	130	15.26%
18 Months > and <= 24 Months	99,498,918	47.77%	406	47.65%
24 Months > and <= 30 Months	45,819,389	22.00%	174	20.42%
30 Months > and <= 36 Months	15,148,696	7.27%	67	7.86%
36 Months > and <= 42 Months	10,619,478	5.10%	53	6.22%
42 Months > and <= 48 Months	4,020,782	1.93%	14	1.64%
48 Months > and <= 54 Months	0	0.00%	0	0.00%
54 Months > and <= 60 Months	0	0.00%	0	0.00%
60 Months > and <= 66 Months	0	0.00%	0	0.00%
66 Months > and <= 72 Months	0	0.00%	0	0.00%
> 72 Months	1,317,234	0.63%	6	0.70%
Total	208,290,736	100.00%	852	100.00%



Geographic Distribution

Jurisdiction State	Balance	% Balance	Loan Count (Consol.)	% Loan Count
New South Wales	62,657,908	30.08%	202	28.02%
Victoria	47,474,025	22.79%	181	25.10%
Queensland	26,813,447	12.87%	93	12.90%
Western Australia	34,643,104	16.63%	97	13.45%
South Australia	29,679,321	14.25%	127	17.61%
Tasmania	237,657	0.11%	2	0.28%
Australian Capital Territory	4,953,810	2.38%	15	2.08%
Northern Territory	1,831,464	0.88%	4	0.55%
No Data	0	0.00%	0	0.00%
Total	208,290,736	100.00%	721	100.00%



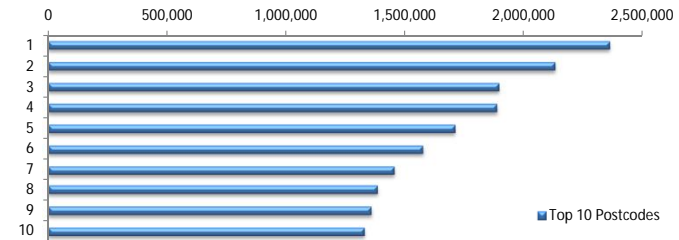
Locality

S&P Category	Balance	% Balance	Loan Count (Consol.)	% Loan Count
Metro	169,424,189	81.34%	569	78.92%
Non Metro	35,473,069	17.03%	143	19.83%
Inner City	3,393,478	1.63%	9	1.25%
Total	208,290,736	100.00%	721	100.00%



Top 10 Postcodes

Postcode	Balance	% Balance	Loan Count (Consol.)	% Loan Count
6065	2,360,361	1.13%	4	0.47%
6030	2,130,256	1.02%	5	0.59%
6164	1,895,505	0.91%	5	0.59%
2913	1,885,909	0.91%	6	0.70%
3216	1,710,485	0.82%	5	0.59%
2170	1,574,437	0.76%	5	0.59%
2031	1,455,250	0.70%	3	0.35%
4815	1,384,271	0.66%	3	0.35%
2500	1,357,183	0.65%	4	0.47%
2560	1,329,663	0.64%	5	0.59%
Total	17,083,322	8.20%	45	5.28%



Documentation

Document Type	Balance	% Balance	Loan Count	% Loan Count
Full Doc	208,290,736	100.00%	852	100.00%
Low Doc	0	0.00%	0	0.00%
No Doc	0	0.00%	0	0.00%
Total	208,290,736	100.00%	852	100.00%



Rate Type

Rate Type	Balance	% Balance	Loan Count	% Loan Count
Variable Rate	208,290,736	100.00%	852	100.00%
Fixed Rate	0	0.00%	0	0.00%
Total	208,290,736	100.00%	852	100.00%



Repayment Type

Repayment Type	Balance	% Balance	Loan Count	% Loan Count
Principal & Interest	169,446,905	81.35%	682	80.05%
Interest Only	37,812,261	18.15%	154	18.08%
Non-Billing	1,031,571	0.50%	16	1.88%
Total	208,290,736	100.00%	852	100.00%



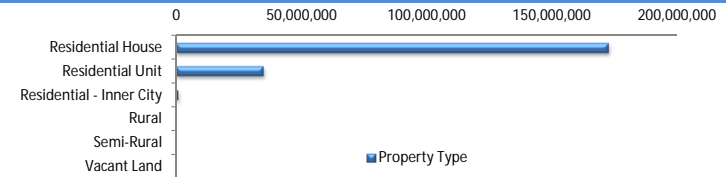
Loan Type

Product Category	Balance	% Balance	Loan Count	% Loan Count
Line of Credit	1,031,571	0.50%	16	1.88%
Term Loan	207,259,166	99.50%	836	98.12%
Total	208,290,736	100.00%	852	100.00%



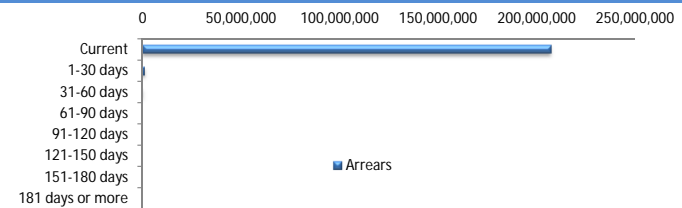
Property Type

Property Type	Balance	% Balance	Loan Count (Consol.)	% Loan Count
Residential House	172,900,398	83.01%	583	80.86%
Residential Unit	34,690,483	16.65%	135	18.72%
Residential - Inner City	693,383	0.33%	2	0.28%
Rural	6,473	0.00%	1	0.14%
Semi-Rural	0	0.00%	0	0.00%
Vacant Land	0	0.00%	0	0.00%
Total	208,290,736	100.00%	721	100.00%



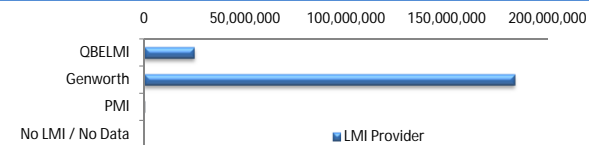
Arrears

Arrears Band	Balance	% Balance	Loan Count	% Loan Count
Current	206,732,796	99.25%	847	99.41%
1-30 days	1,262,620	0.61%	4	0.47%
31-60 days	295,320	0.14%	1	0.12%
61-90 days	0	0.00%	0	0.00%
91-120 days	0	0.00%	0	0.00%
121-150 days	0	0.00%	0	0.00%
151-180 days	0	0.00%	0	0.00%
181 days or more	0	0.00%	0	0.00%
Total	208,290,736	100.00%	852	100.00%



LMI Provider

LMI Provider	Balance	% Balance	Loan Count (Consol.)	% Loan Count
QBELMI	24,799,653	11.91%	84	11.65%
Genworth	183,209,202	87.96%	636	88.21%
PMI	281,881	0.14%	1	0.14%
No LMI / No Data	0	0.00%	0	0.00%
Total	208,290,736	100.00%	721	100.00%



Property Occupancy

Property Occupancy	Balance	% Balance	Loan Count	% Loan Count
Investment	46,356,597	22.26%	186	21.83%
Owner Occupier	161,934,139	77.74%	666	78.17%
Total	208,290,736	100.00%	852	100.00%



Default Statistics

Default Data	Amount	No. of Loans
Defaulted Loans	0.00	0.00
Loss on Sale	0.00	0.00
Claims on LMI	0.00	0.00
Claims paid by LMI	0.00	0.00
Claims Denied/Reduced	0.00	0.00
Loss covered by Excess Spread	0.00	N/A